



**TRILOBITE
TESTING, INC.**

DRILL STEM TEST REPORT

Shakespeare Oil Co. Inc

8-13s-32w Logan KS

202 W Main St
Salem IL 62881

Campbell # 3-8

ATTN: Tim Priest

Job Ticket: 49925

DST#: 3

Test Start: 2012.12.08 @ 02:42:00

GENERAL INFORMATION:

Formation: **LKC " K "**

Deviated: No Whipstock: ft (KB)

Time Tool Opened: 04:50:40

Time Test Ended: 09:37:39

Test Type: Conventional Bottom Hole (Reset)

Tester: Will MacLean

Unit No: 58

Interval: 4210.00 ft (KB) To 4235.00 ft (KB) (TVD)

Reference Elevations: 2988.00 ft (KB)

Total Depth: 4235.00 ft (KB) (TVD)

2978.00 ft (CF)

Hole Diameter: 7.88 inches Hole Condition: Good

KB to GR/CF: 10.00 ft

Serial #: 8674

Inside

Press @ Run Depth: 20.04 psig @ 4212.00 ft (KB)

Capacity: 8000.00 psig

Start Date: 2012.12.08

End Date:

2012.12.08

Last Calib.:

2012.12.08

Start Time: 02:42:00

End Time:

09:37:39

Time On Btm:

2012.12.08 @ 04:50:25

Time Off Btm:

2012.12.08 @ 07:51:39

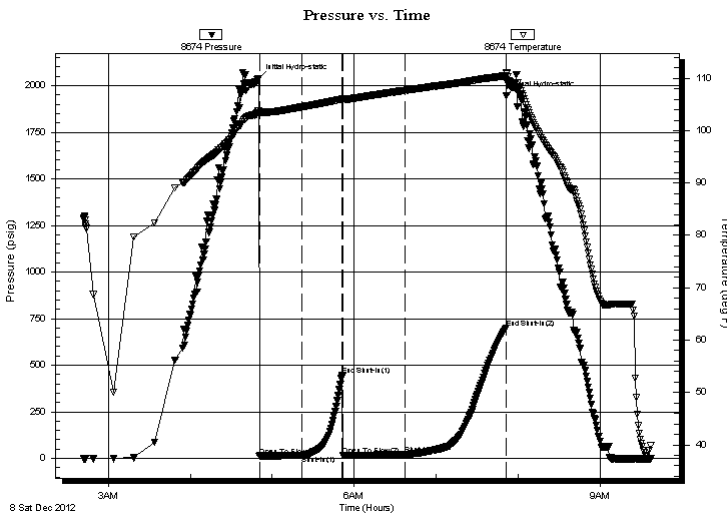
TEST COMMENT: IF- Weak Surface Blow 1/2"

IS- No Blow

FF- Weak Surface Blow

FS- No Blow

PRESSURE SUMMARY



Time (Min.)	Pressure (psig)	Temp (deg F)	Annotation
0	2038.53	103.79	Initial Hydro-static
1	12.30	103.01	Open To Flow (1)
31	15.52	104.51	Shut-In(1)
61	446.59	106.01	End Shut-In(1)
62	17.38	105.75	Open To Flow (2)
108	20.04	107.67	Shut-In(2)
181	701.30	110.47	End Shut-In(2)
182	1945.33	111.12	Final Hydro-static

Recovery

Length (ft)	Description	Volume (bbl)
5.00	100% m with Skim of Oil on Top	0.02

Gas Rates

Choke (inches)	Pressure (psig)	Gas Rate (Mcf/d)

* Recovery from multiple tests



**TRILOBITE
TESTING, INC.**

DRILL STEM TEST REPORT

FLUID SUMMARY

Shakespeare Oil Co. Inc

8-13s-32w Logan KS

202 W Main St
Salem IL 62881

Campbell # 3-8

Job Ticket: 49925

DST#: 3

ATTN: Tim Priest

Test Start: 2012.12.08 @ 02:42:00

Mud and Cushion Information

Mud Type: Gel Chem

Cushion Type:

Oil API:

deg API

Mud Weight: 9.00 lb/gal

Cushion Length:

ft

Water Salinity:

ppm

Viscosity: 44.00 sec/qt

Cushion Volume:

bbbl

Water Loss: 6.80 in³

Gas Cushion Type:

Resistivity: ohm.m

Gas Cushion Pressure:

psig

Salinity: 3500.00 ppm

Filter Cake: 1.00 inches

Recovery Information

Recovery Table

Length ft	Description	Volume bbl
5.00	100% m with Skim of Oil on Top	0.025

Total Length: 5.00 ft Total Volume: 0.025 bbl

Num Fluid Samples: 0

Num Gas Bombs: 0

Serial #:

Laboratory Name:

Laboratory Location:

Recovery Comments:

Serial #: 8674

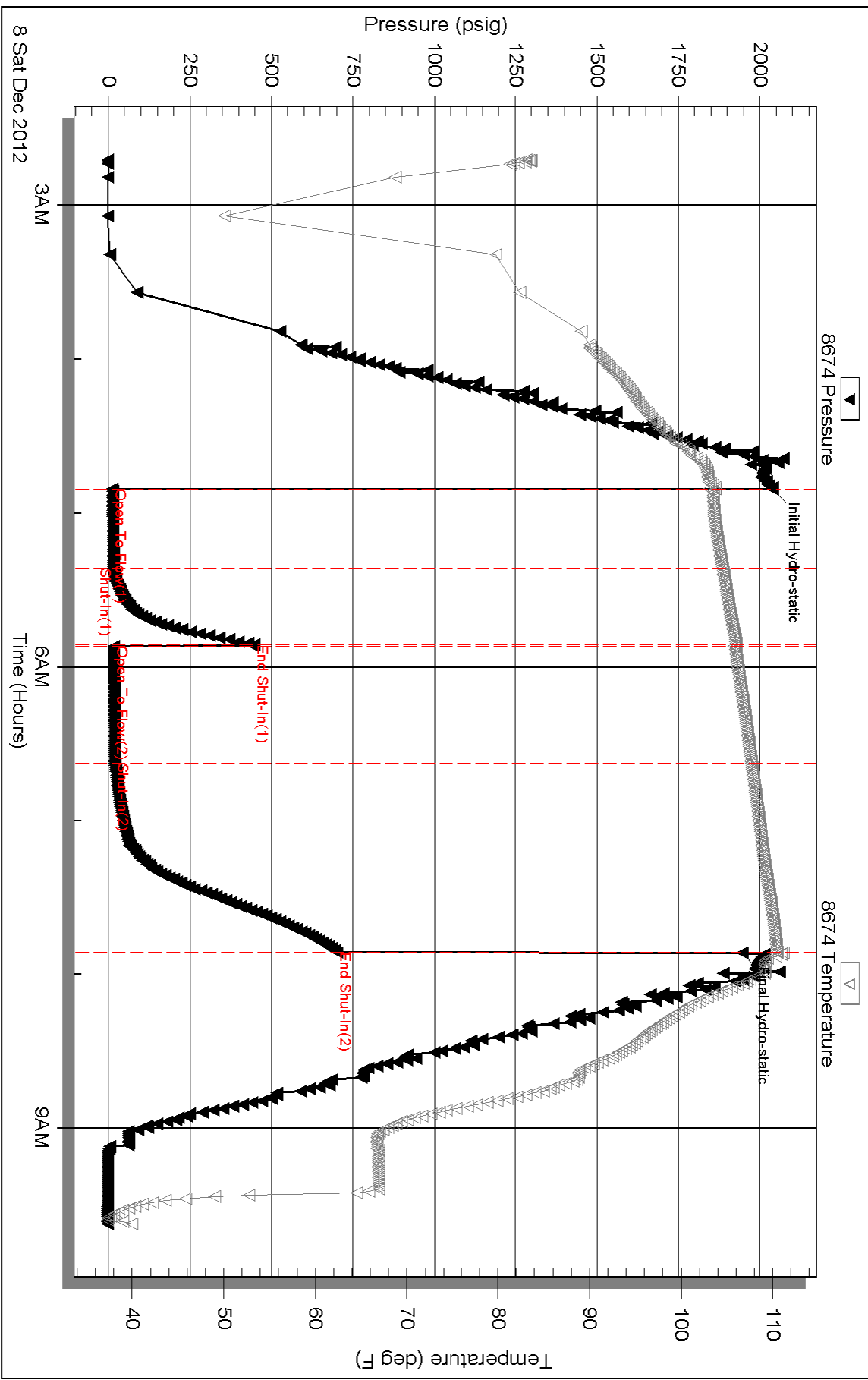
Inside

Shakespeare Oil Co. Inc

Campbell # 3-8

DST Test Number: 3

Pressure vs. Time



Triobite Testing, Inc

Ref. No: 49925

Printed: 2012.12.08 @ 23:11:59