



TRILOBITE TESTING, INC.

DRILL STEM TEST REPORT

Shakespeare Oil Co. Inc

8-13s-32w Logan KS

202 W Main St
Salem IL 62881

Campbell # 3-8

ATTN: Tim Priest

Job Ticket: 49977

DST#: 4

Test Start: 2012.12.09 @ 02:56:00

GENERAL INFORMATION:

Formation: **Marmaton**

Deviated: No Whipstock: ft (KB)

Time Tool Opened: 05:12:55

Time Test Ended: 10:31:09

Test Type: Conventional Bottom Hole (Reset)

Tester: Will MacLean

Unit No: 58

Interval: 4318.00 ft (KB) To 4350.00 ft (KB) (TVD)

Reference Elevations: 2988.00 ft (KB)

Total Depth: 4350.00 ft (KB) (TVD)

2978.00 ft (CF)

Hole Diameter: 7.88 inches Hole Condition: Good

KB to GR/CF: 10.00 ft

Serial #: 8674 Inside

Press @ Run Depth: 37.99 psig @ 4322.00 ft (KB)

Capacity: 8000.00 psig

Start Date: 2012.12.09

End Date:

2012.12.09

Last Calib.: 2012.12.09

Start Time: 02:56:00

End Time:

10:31:09

Time On Btm: 2012.12.09 @ 05:12:25

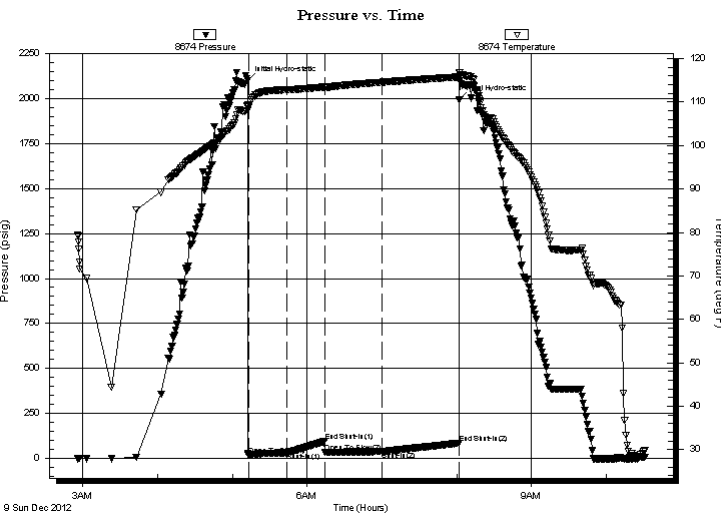
Time Off Btm: 2012.12.09 @ 08:02:09

TEST COMMENT: IF- Surface Blow Built to 2 1/2"

IS- No Blow

FF- No Blow

FS- No Blow



PRESSURE SUMMARY

Time (Min.)	Pressure (psig)	Temp (deg F)	Annotation
0	2100.68	109.29	Initial Hydro-static
1	19.29	108.80	Open To Flow (1)
32	31.87	112.80	Shut-In(1)
62	94.80	113.45	End Shut-In(1)
62	33.50	113.41	Open To Flow (2)
108	37.99	114.54	Shut-In(2)
170	85.74	115.77	End Shut-In(2)
170	1994.38	116.73	Final Hydro-static

Recovery

Length (ft)	Description	Volume (bbl)
40.00	WCM 18%w 82% m Few Oil Spots in Tool	0.20

* Recovery from multiple tests

Gas Rates

Choke (inches)	Pressure (psig)	Gas Rate (Mcf/d)



**TRILOBITE
TESTING, INC.**

DRILL STEM TEST REPORT

FLUID SUMMARY

Shakespeare Oil Co. Inc

8-13s-32w Logan KS

202 W Main St
Salem IL 62881

Campbell # 3-8

Job Ticket: 49977

DST#: 4

ATTN: Tim Priest

Test Start: 2012.12.09 @ 02:56:00

Mud and Cushion Information

Mud Type: Gel Chem

Cushion Type:

Oil API:

deg API

Mud Weight: 9.00 lb/gal

Cushion Length:

ft

Water Salinity:

70000 ppm

Viscosity: 53.00 sec/qt

Cushion Volume:

bbf

Water Loss: 7.19 in³

Gas Cushion Type:

Resistivity: ohm.m

Gas Cushion Pressure:

psig

Salinity: 4500.00 ppm

Filter Cake: 1.00 inches

Recovery Information

Recovery Table

Length ft	Description	Volume bbf
40.00	WCM 18%w 82%m Few Oil Spots in Tool	0.197

Total Length: 40.00 ft Total Volume: 0.197 bbf

Num Fluid Samples: 0

Num Gas Bombs: 0

Serial #:

Laboratory Name:

Laboratory Location:

Recovery Comments: RW is .270 @ 28f = 70000

Serial #: 8674

Inside

Shakespeare Oil Co. Inc

Campbell # 3-8

DST Test Number: 4

