



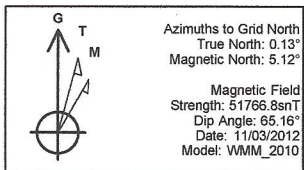
Company: Tug Hill Operating, LLC
 Site: Donovan
 Well: 1-10H
 Project: Barber County, Kansas (NAD 83)
 Rig Name: Patterson 421



Planning: 936.442.2510 Fax: 936.442.2515
 Operations: 936.442.2500 Fax: 936.442.2599

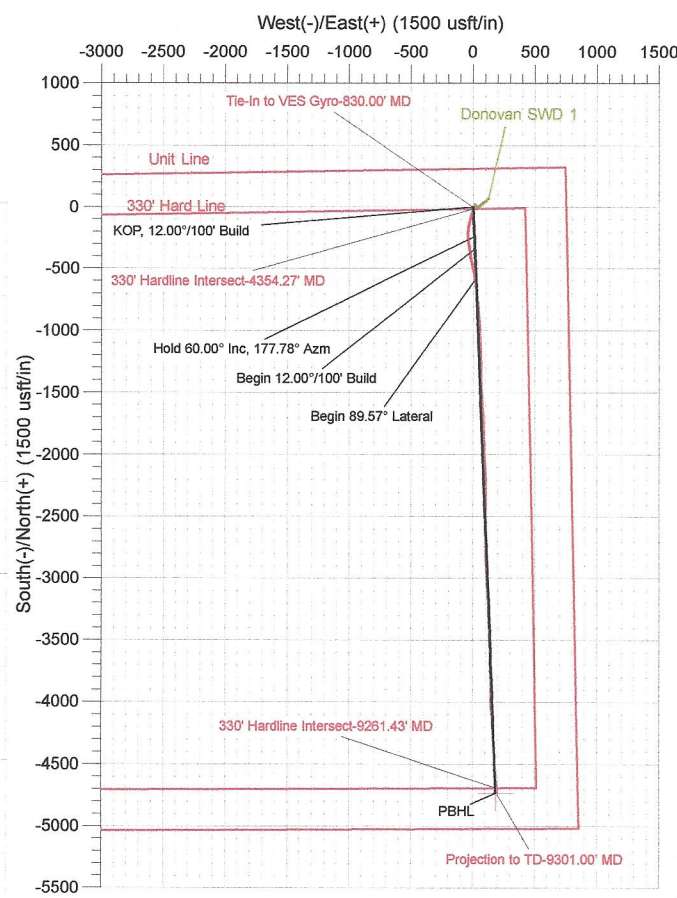
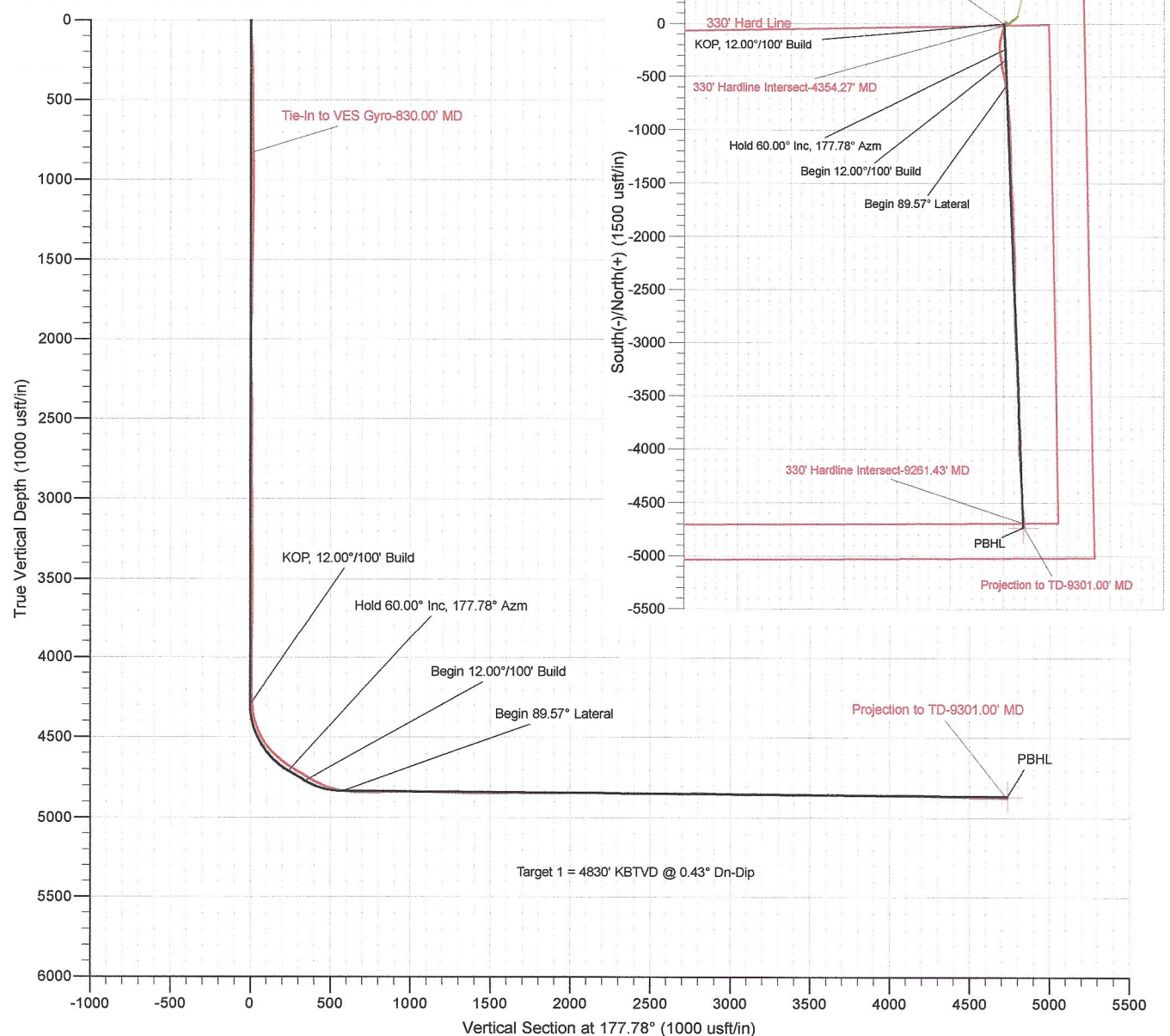
ANNOTATIONS

MD	Inc	Azi	TVD	+N-S	+E-W	Vsect	Departure	Annotation
4296.89	0.00	0.00	4296.89	0.00	0.00	0.00	0.00	KOP, 12.00°/100' Build
4796.89	60.00	177.78	4710.38	-238.55	9.25	238.73	238.73	Hold 60.00° Inc, 177.78° Azm
4916.89	60.00	177.78	4770.38	-342.40	13.28	342.66	342.66	Begin 12.00°/100' Build
5163.30	89.57	177.78	4834.34	-577.37	22.39	577.80	577.80	Begin 89.57° Lateral
9319.70	89.57	177.78	4865.53	-4730.53	183.41	4734.08	4734.08	PBHL



Created By: Hunter Heseman
 Date: 9:37, November 29 2012
 Plan: Design #2

US State Plane 1983
 Kansas Southern Zone



The customer should only rely on this document after independently verifying all paths, targets, coordinates, lease and hard lines represented. Any decisions made or wells drilled utilizing this or any other information supplied by MS Energy are at the sole risk and responsibility of the customer. MS Energy is not responsible for the accuracy of this schematic or the information contained herein.