

GEOLOGIST'S REPORT

DRILLING TIME AND SAMPLE LOG

Trans Pacific Oil Corp.
Schaben 'A' Unit #1-12
Schaben
NE NW SE SW
12 20 22W
Ness KS
Duke Rig #4
10-2-2012 COMP 10-10-2012
4392 4393
3505 Chem

ELEVATIONS
2247
2238
KB
CASING
SURFACE 8 5/8" @ 220'
PRODUCTION 5 1/2"
ELECTRICAL SURVEYS
DI, BH GAMMA
COMP N/D

FORMATION TOPS WITH STRUCTURAL POSITION

FORMATION	LOGIC TOP	LOGIC DEPTH	SUB-SEA DEPTH	STRUCTURAL POSITION		
				1	2	3
Anhydrite	1468	1468	779	781	785	
Base Anhydrite	1501	1502	745	747	751	
Heobner	3746	3746	-1499	-1495	-1497	
Lansing	3789	3794	-1547	-1539	-1541	
BKC	4131	4137	-1890	-1879	-1880	
Marmaton	4147	4145	-1898	-1892	-1897	
Pawnee	4219	4219	-1972	-1969	-1967	
FT. Scott	4299	4302	-2055	-2048	-2050	
Cherokee	4375	4326	-2079	-2074	-2070	
Miss. Osage	4320	4374	-2127	-2125	-2123	
		4387	-2140	↑		

SAMPLE TOPS

REFERENCE WELLS FOR STRUCTURE





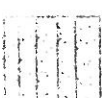

Ritchie Wittman 'B' #1 NE SW 12-20-22W
Palomino Wittman #3 W/2 W/2 SE 12-20-22W

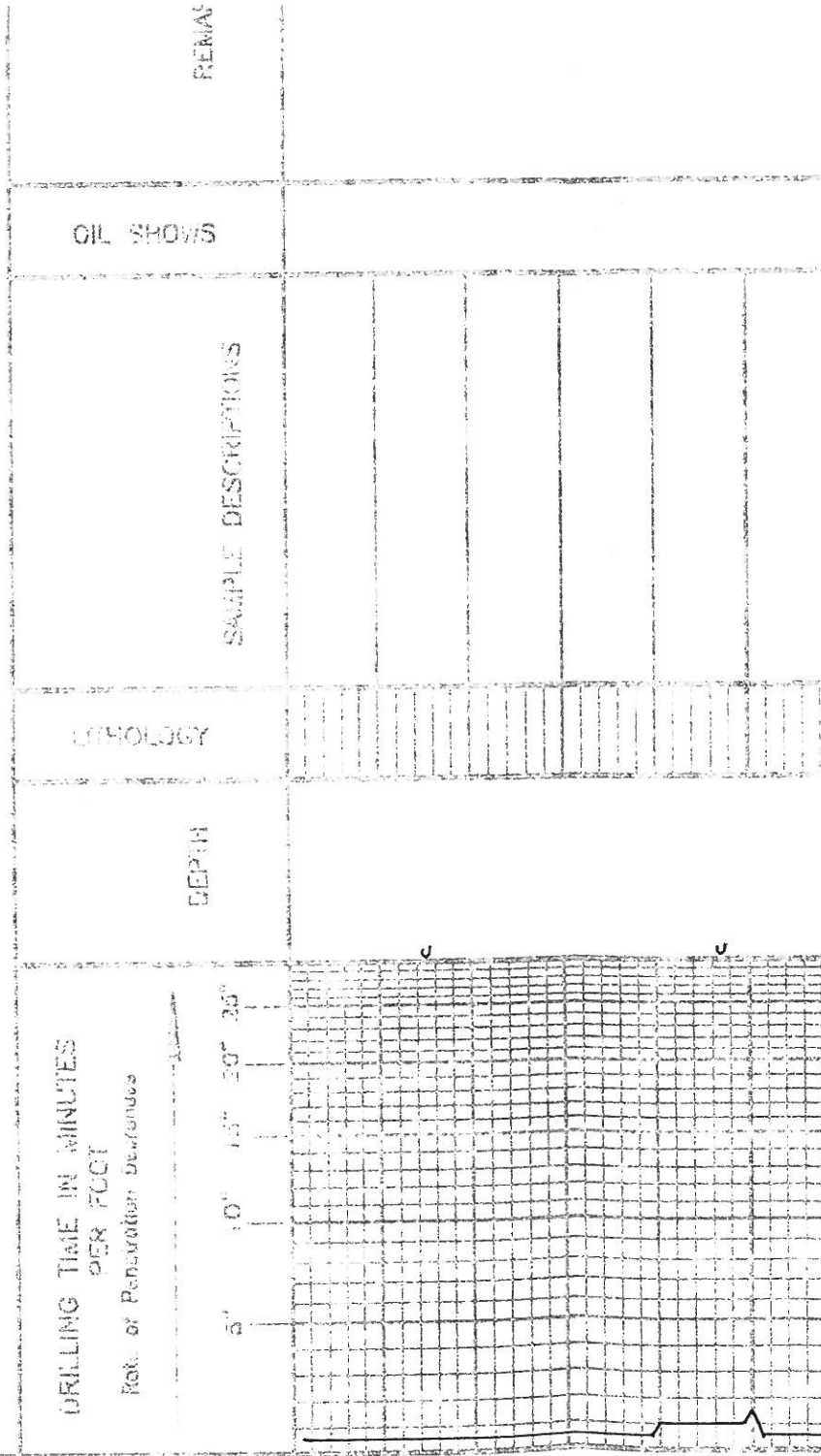
REMARKS: PRODUCTION CASING WAS SET IN THE MISS OSGE DUE TO POSITIVE DST RE THE FT. SCOTT SHOULD BE EVALUATED FOR PRODUCTION PRIOR TO ABANDONMENT.

RESPECTFULLY SUBMIT

M. R. Lavelle

LEGEND

-  Dolomite
-  Chert
-  Oil Lime
-  Limestone
-  Carb sh
-  Sand
-  Sandstone
-  Soil
-  Anhydrite



ANHYDRITE
1468 + 779

BASE
ANHYDRITE
1500
1501 + 746

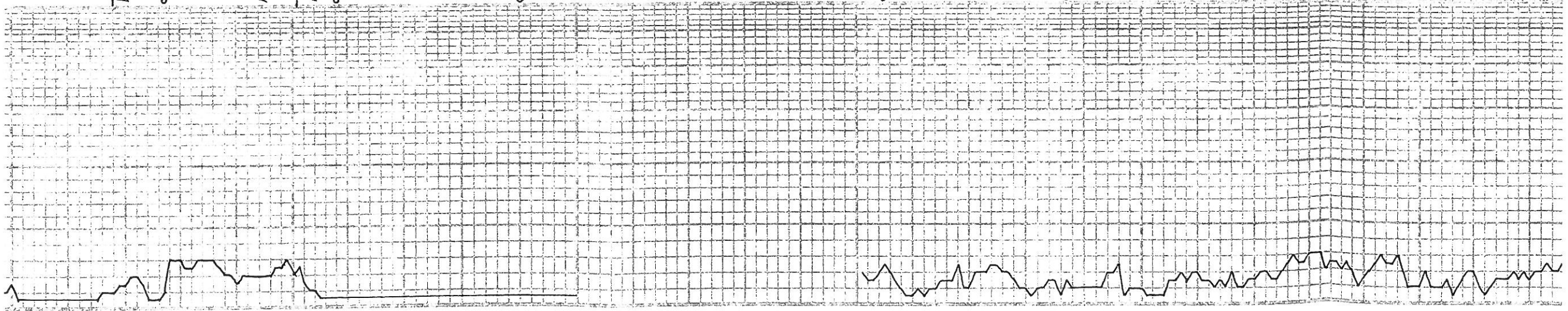
3500

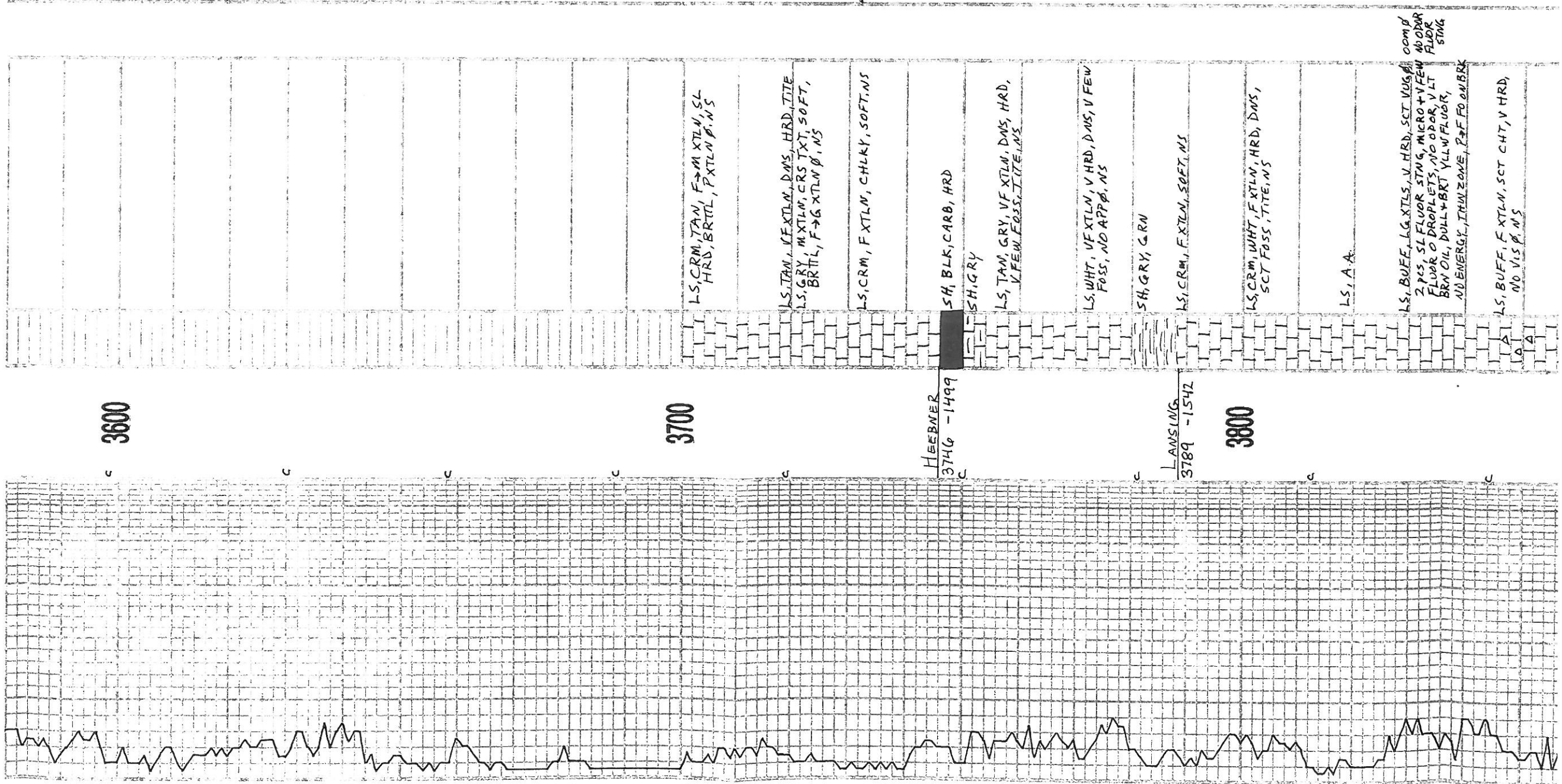
DEV 1/2°

3600

JET #1

7:AM 10-7-12
CONV @ 356'
MVD CHECK
VIS 46 WT 8.
CHLOR 1,600 LI
FILT 7.2





3600

3700

HEEBNER
3746-1499

LAUSING
3789-1542

3800

LS, CRM, TAN, F → M XTLN, SL
HRD, BRTL, P XTLN Ø, NS

LS, TAN, VF XTLN, DMS, HRD, TITE
LS, GRY, M XTLN, CRS TXT, SOFT,
BRTL, F → G XTLN Ø, NS

LS, CRM, F XTLN, CHLKY, SOFT, NS

SH, BLK, CARB, HRD

SH, GRY

LS, TAN, GRY, VF XTLN, DMS, HRD,
V FEW FOSS, TITE, NS

LS, WHT, VF XTLN, V HRD, DMS, V FEW
FOSS, NO APP Ø, NS

SH, GRY, GRN

LS, CRM, F XTLN, SOFT, NS

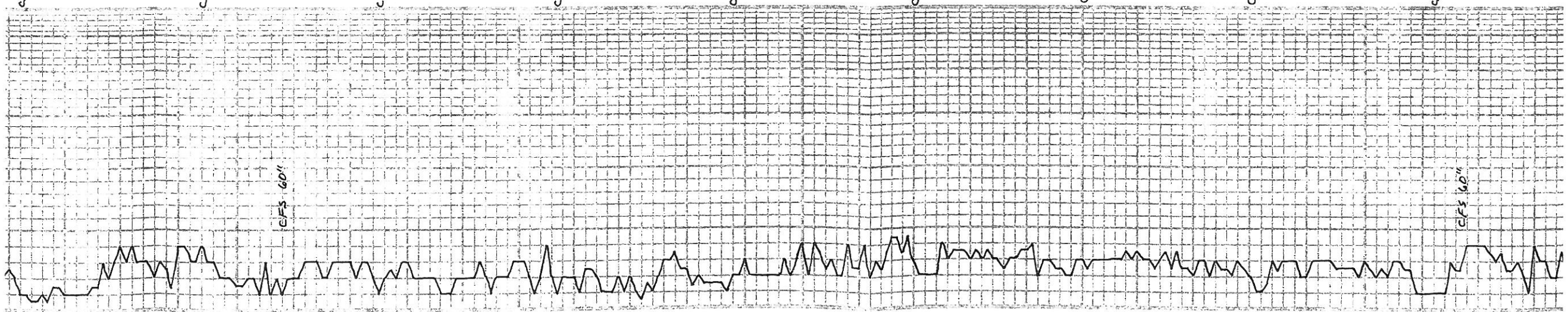
LS, CRM, WHT, F XTLN, HRD, DMS,
SCT FOSS, TITE, NS

LS, A, A

LS, BUFF, LG XTLN, V HRD, SCT VUGS, ^{com'd}
2 PCS SL FLOR STNG, MICRO + V FEW
FLOR Ø DRAPLETS, NO ODR, V LT
BRN OIL, DULL + BRT YLLN FLOR,
NO ENERGY, IRN ZONE, P → F FO ON BRK

LS, BUFF, F XTLN, SCT CHT, V HRD,
NO VIS Ø, NS

1st SAMPLES
(late catch



3900

4000

LS, A, A

LS, BUFF, LG, XTLN, V. HRD, SCT VUG, ^{com d} 2 Pcs SL FLOR STNG, MICRO + V FEW NO DROR FLOOR FLOR STNG
 FLOR, O DRPLETS, NO OPOR, V LT BRN OIL, DULL + BRT YLLW FLOR, NO EMERGY, THIN ZONE, P + F FO ANARK

LS, BUFF, F XTLN, SCT CHT, V HRD, NO VIS ϕ , NS

LS, BUFF, E, WHT, VE XTLN, V HRD, V FOSS + ALGAL FRAGS, W CMT'D, TITE, NS
 SH, LT + DK GRY

LS, LT TAN, VF XTLN, BRITL, M HRD, RE XTL'D FRAGS, VP ϕ

SH, DK GRY, GRN, BRN/BURG

CHT, WHT, CRM, V FOSS, ? FRAC'D, NS

LS, CRM, TAN, VF XTLN, CRYSTD XTLN, V FOSS, NO ϕ , NS

LS, CRM, M XTLN, V SL DOG, V FOSS, CRUMBLY, SOFT, G INT ϕ , NS

LS, CRM, E XTLN, DNS, HRD, FOSS, TITE, NS

LS, CRM, F XTLN, SL, C-HLKY, M HRD, FOSS, P XTLN ϕ , NS

SH, GRY, BLK

CHT, WHT, V FOSS, ? FRAC'D, NS

LS, WHT, F XTLN, C-HLKY, NS

SH, BLK, CABB

LS, BRN, TAN, GRY, VF XTLN, DNS, M HRD, BRITL, NO APP ϕ , NS

SH, GRY, SLTY

SH, GRY, GRN

LS, CRM, WHT, F XTLN, M HRD, FEW FOSS, SCT CHLK, NS

LS, BUFF, VF XTLN, HRD S \rightarrow M OOLS, F + W CMT'D OOLS, SCT OOM ϕ , V SCT VUG ϕ , NS

LS, GRY, VF XTLN, V HRD, V DNS, SML OOLS, VW CMT'D OOLS, NO ϕ , NS

LS, BUFF, F XTLN, BRITL, HRD, V OOL, ABUN OOM ϕ , NS

SH, BLK

LS, CRM, WHT, F XTLN, Pcs W/ SCT OOLS W/ N, BRITL, NS

CFS 60"

CFS 60"

7:AM 10-8-12
RIG V @ 411

MUD CHE
VIS 55 W
CHLOR 4,000
FILT 10.8

STRAP 4401
BOARD 4401
short

SHORT TRIP
DST #1 4317
30.60
IF: 1/2, PIED 23"
FF: DEAD
REC: 8' DM
TOOL: MVD
FP: 9-11, 12-1
SIP: 53-31
HP: 2078-20

DST #2 4311
30.60
IF: BOB 24"
FF: BOB 25 1/2"
REC: 154' GIP
234' CO
116' GON
19 1/2 G, 2
TOOL: 8 1/2 G, 3
FP: 14-60, 6.
SIP: 1311-130.
HP: 2089-20.

LS, BUFF, F, XTLN, BR TL, HRD, VOOL, ABUN COMP, NS	SH, BLK	LS, CRM, WHT, F, XTLN, Pcs W/ SET DOLS W/N, BR TL, NS	A. A.	SH, BLK	LS, GRY, BRN, VF XTLN, DMS, V HRD, CRYPTO XTLN, TITE, NS	LS, GRY, VF XTLN, ABUN CRIN'S, F. NS	SH, GRY, GRN	LS, WHT, F, XTLN, SOFT, CHKY, NS	LS, WHT, GRY, VF XTLN, CRYPTO, DMS, HRD, TITE, NS	SH, GRN/GRY	LS, WHT/CRM, GRY, F, XTLN, SOFT, M XTLN W/N, NO VIS P. NS	SH, GRY	LS, WHT, F, XTLN, VF XTLN, DMS, HRD, TITE, NS	SH, DK GRY	LS, TAN/BRN, VF XTLN, V HRD, DMS, V FOSS + SLOOL, VWCMT'D, TITE, NS	LS, BRN, TAN, F, XTLN, V HRD, DMS, FEW FOSS, TITE, NS	LS, BRN/GRY, F, XTLN, SLGRNLA, HRD, TITE, NS	SH, GRN	LS, WHT, CRM, TAN, F, XTLN, M+V HRD, DMS, NS	SH, LT+DK GRY, GRN	SH, BLK	LS, BUFF, F, XTLN, M HRD, V SL FOSS, P XTLN, NS 1 PC, SET FLUOR STAG, FEW FO ON BRN, NO ODR BRT YLW FLUOR, V LT OIL SPTS	V SL INCR OF SHOW ROCK, THIN ZONE SHOW LOOKS WET	LS, AA, BUFF, F, XTLN, M HRD, V SL FOSS, P XTLN, NS	SH, BLK
-------------------------------------------------------	---------	----------------------------------------------------------	-------	---------	-------------------------------------------------------------	-----------------------------------------	--------------	----------------------------------	------------------------------------------------------	-------------	--------------------------------------------------------------	---------	--------------------------------------------------	------------	---------------------------------------------------------------------------	----------------------------------------------------------	-------------------------------------------------	---------	-------------------------------------------------	--------------------	---------	-----------------------------------------------------------------------------------------------------------------------------------	-----------------------------------------------------	--------------------------------------------------------	---------

4100

BKC
4131-1884

MARMATON
4147-1900

4200

PAWNEE
4219-1972

FT SCOTT
4300
4299-2052

CHEROKEE
4320-2073



