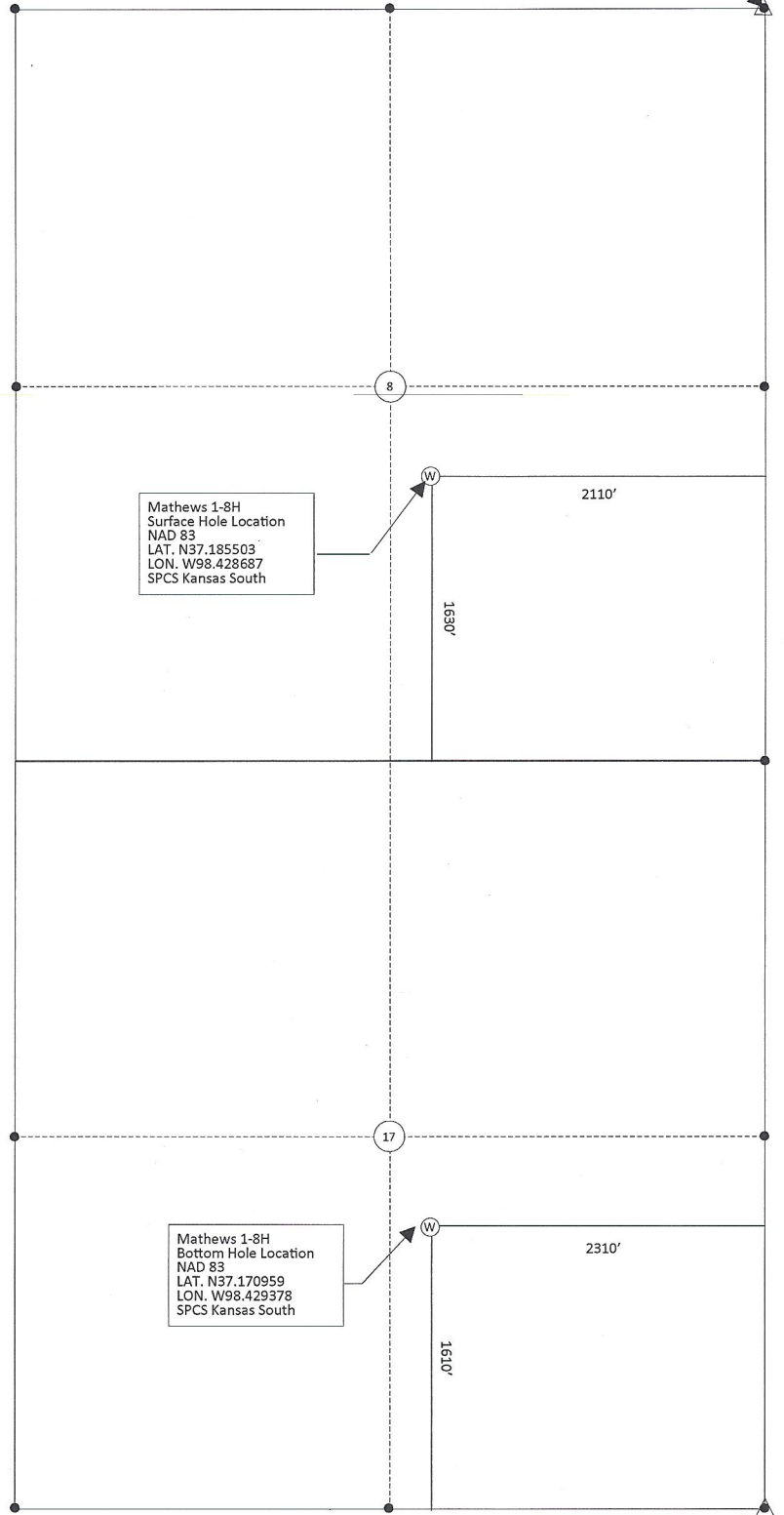


Approx. Scale in Feet: 1310



Northeast Corner
Section 8-T33S-R10W



Mathews 1-8H
Surface Hole Location
NAD 83
LAT. N37.185503
LON. W98.428687
SPCS Kansas South

Mathews 1-8H
Bottom Hole Location
NAD 83
LAT. N37.170959
LON. W98.429378
SPCS Kansas South

Lease Name: Mathews

Well No. 1-8H

Well loc. Co./St.: Barber County, KS

Well loc. Section: 8-T33S-R10W

Survey Datums (shown on drawing)

Horz. Datum NAD83

Kansas SPCS South Zone (US Feet)

Southeast Corner
Section 17-T33S-R10W

This is to certify that this map was made by me and that, to the best of my knowledge, is true and correct.