

Well location, NUNEMAKER 2509 #32-1H (OPTION 2 WITHOUT RAILROAD LEASE), located as shown in the NE 1/4 NE 1/4 of Section 32, T25S, R9W, 6th P.M., Reno County, Kansas.

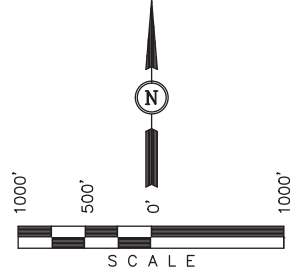
BASIS OF ELEVATION

SPOT ELEVATION LOCATED AT THE SW CORNER OF SECTION 18, T23S, R8W, 6th P.M. TAKEN FROM THE ALDEN SE, QUADRANGLE, KANSAS, RENO COUNTY, 7.5 MINUTE QUAD (TOPOGRAPHIC MAP) PUBLISHED BY THE UNITED STATES DEPARTMENT OF THE INTERIOR, GEOLOGICAL SURVEY, SAID ELEVATION IS MARKED AS BEING 1688 FEET.

BASIS OF BEARINGS

BASIS OF BEARINGS IS A G.P.S. OBSERVATION.

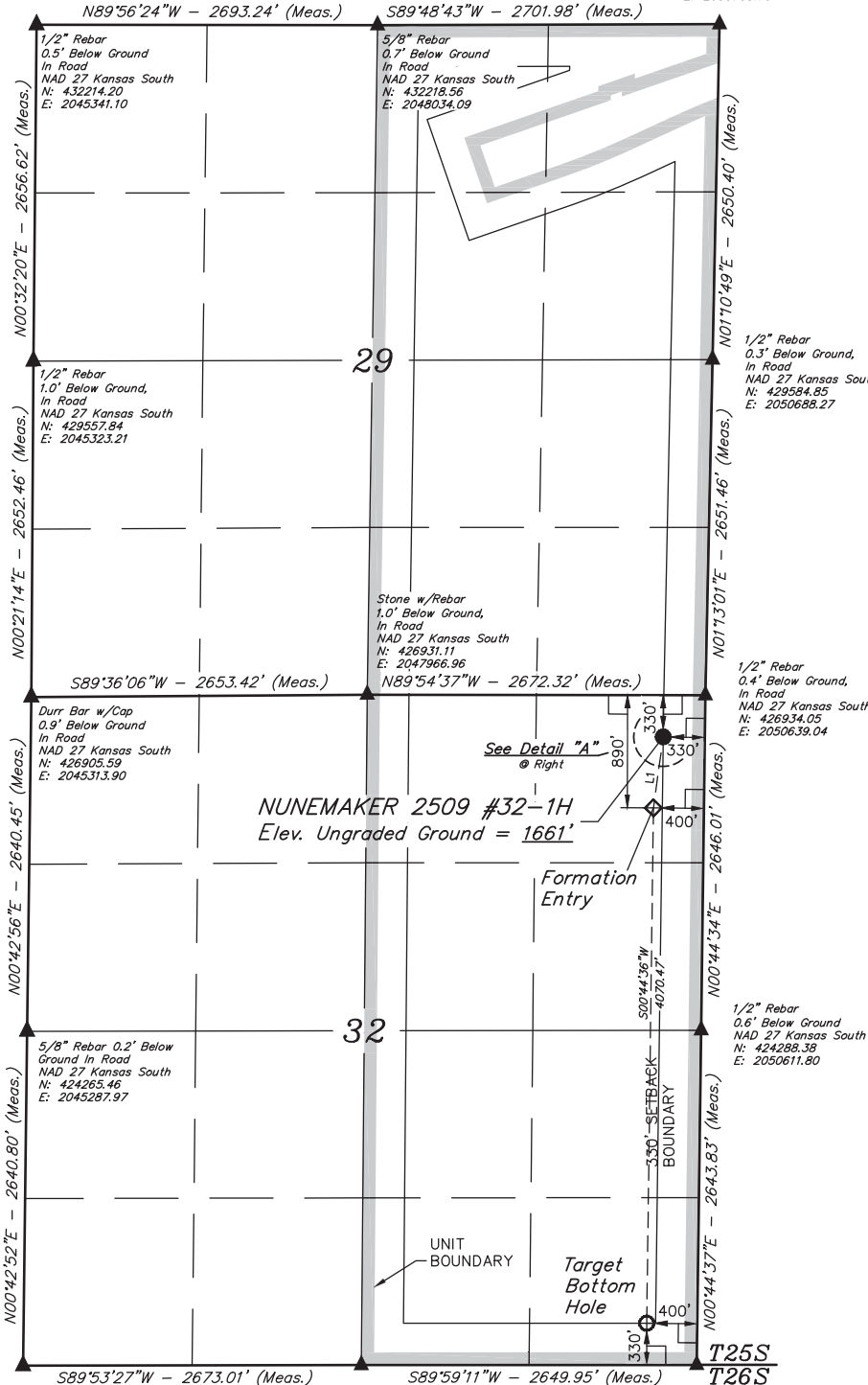
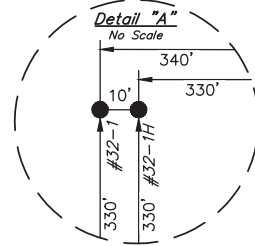
Railroad Spike
0.3' Below Ground
NAD 27 Kansas South
N: 432234.62
E: 2050733.79



LINE TABLE		
LINE	DIRECTION	LENGTH
L1	S07°51'57"W	565.11'

LEGEND:

- └ = 90° SYMBOL
- = PROPOSED WELL HEAD.
- ▲ = SECTION CORNERS LOCATED.



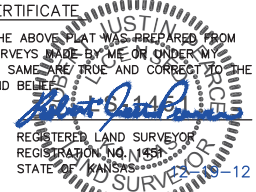
NUNEMAKER 2509 #32-1H
Elev. Ungraded Ground = 1661'

Formation Entry

Target Bottom Hole

CERTIFICATE

THIS IS TO CERTIFY THAT THE ABOVE PLAT WAS PREPARED FROM FIELD NOTES OF ACTUAL SURVEYS MADE BY ME OR UNDER MY SUPERVISION AND THAT THE SAME ARE TRUE AND CORRECT TO THE BEST OF MY KNOWLEDGE AND BELIEF.



REVISED: 12-12-12
REVISED: 11-27-12

UINTAH ENGINEERING & LAND SURVEYING
85 SOUTH 200 EAST - VERNAL, UTAH 84078
(435) 789-1017

SCALE	DATE SURVEYED:	DATE DRAWN:
1" = 1000'	08-21-12	09-04-12
PARTY	REFERENCES	
J.P. C.B. C.A.G.	G.L.O. PLAT	
WEATHER	FILE	
HOT	SGOMI	

NAD 83 (#32-1H TARGET BOTTOM HOLE)	NAD 83 (#32-1H FORMATION ENTRY)	NAD 83 (#32-1H SURFACE LOCATION)
LATITUDE = 37°49'31.66" (37.825461) LONGITUDE = 98°19'35.72" (98.326589)	LATITUDE = 37°50'11.90" (37.836639) LONGITUDE = 98°19'35.10" (98.326417)	LATITUDE = 37°50'17.43" (37.838175) LONGITUDE = 98°19'34.14" (98.326150)
NAD 27 (#32-1H TARGET BOTTOM HOLE)	NAD 27 (#32-1H FORMATION ENTRY)	NAD 27 (#32-1H SURFACE LOCATION)
LATITUDE = 37°49'31.60" (37.825444) LONGITUDE = 98°19'34.46" (98.326239)	LATITUDE = 37°50'11.84" (37.836622) LONGITUDE = 98°19'33.85" (98.326069)	LATITUDE = 37°50'17.38" (37.838161) LONGITUDE = 98°19'32.89" (98.325803)
STATE PLANE NAD 27 (KANSAS SOUTH)	STATE PLANE NAD 27 (KANSAS SOUTH)	STATE PLANE NAD 27 (KANSAS SOUTH)
N: 421973.71 E: 2050187.95	N: 426043.66 E: 2050229.89	N: 426603.61 E: 2050305.72