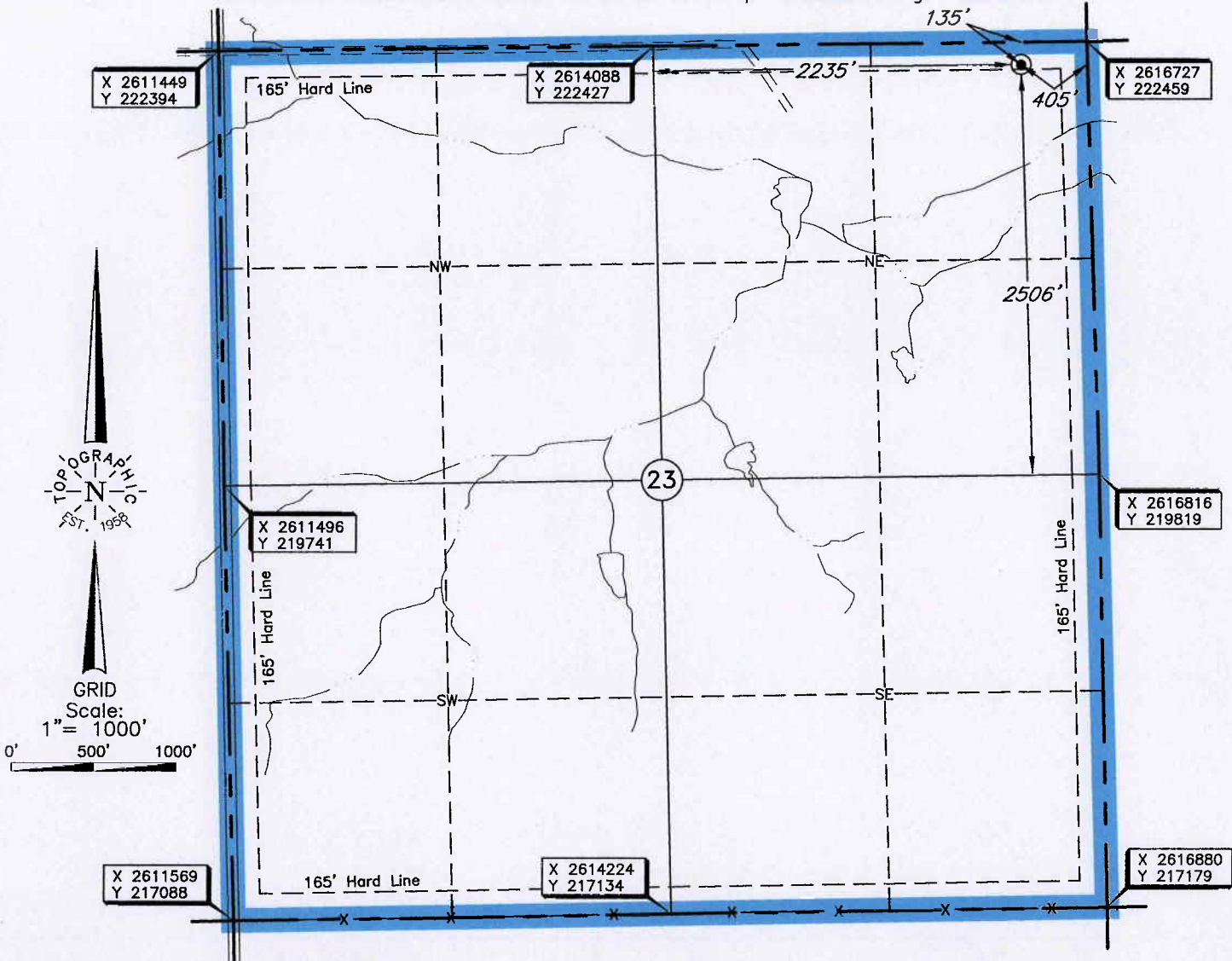


CHAUTAUQUA

County, Kansas

135'FNL - 405'FEL Section 23 Township 32S Range 9E P.M.



Distances shown in (parenthesis) are calculated based upon the Quarter Section being 2640 feet, those shown in [brackets] are based on GLO (General Land Office) distances and have NOT been measured on the ground.

CORNER COORDINATES ARE TAKEN FROM POINTS SURVEYED IN THE FIELD.

Operator: NEMAHA OIL AND GAS

Lease Name: LAMPSON SWD

Well No.: 2A

ELEVATION:
 1060' Gr. at Stake

Topography & Vegetation Loc. fell terraced pasture

Good Drill Site? Yes Reference Stakes or Alternate Location
 Stakes Set None

Best Accessibility to Location From North off lease road

Distance & Direction from Hwy Jct or Town From Cedarvale, Kansas, go ± 5.5 miles East on US Hwy 166, then go ± 10 miles North, and 0.5 mile East to the North Quarter Corner of Section 23, T32S - R9E.

Date of Drawing: Dec. 14, 2012

NMB

Invoice # 193768A Date Staked: Dec. 13, 2012

This information was gathered with a GPS receiver with Sub-Meter accuracy.

DATUM: NAD-27
 LAT: 37°15'28.8"N
 LONG: 96°22'56.0"W
 LAT: 37.258011400° N
 LONG: 96.382222790° W
 STATE PLANE COORDINATES: (US Feet)
 ZONE: KS SOUTH
 X: 2616326
 Y: 222319

CERTIFICATE:

I, Michael Blake Brown a Kansas Licensed Land Surveyor and an authorized agent of Topographic Land Surveyors, do hereby certify that the above described well location was surveyed and staked on the ground as shown herein.

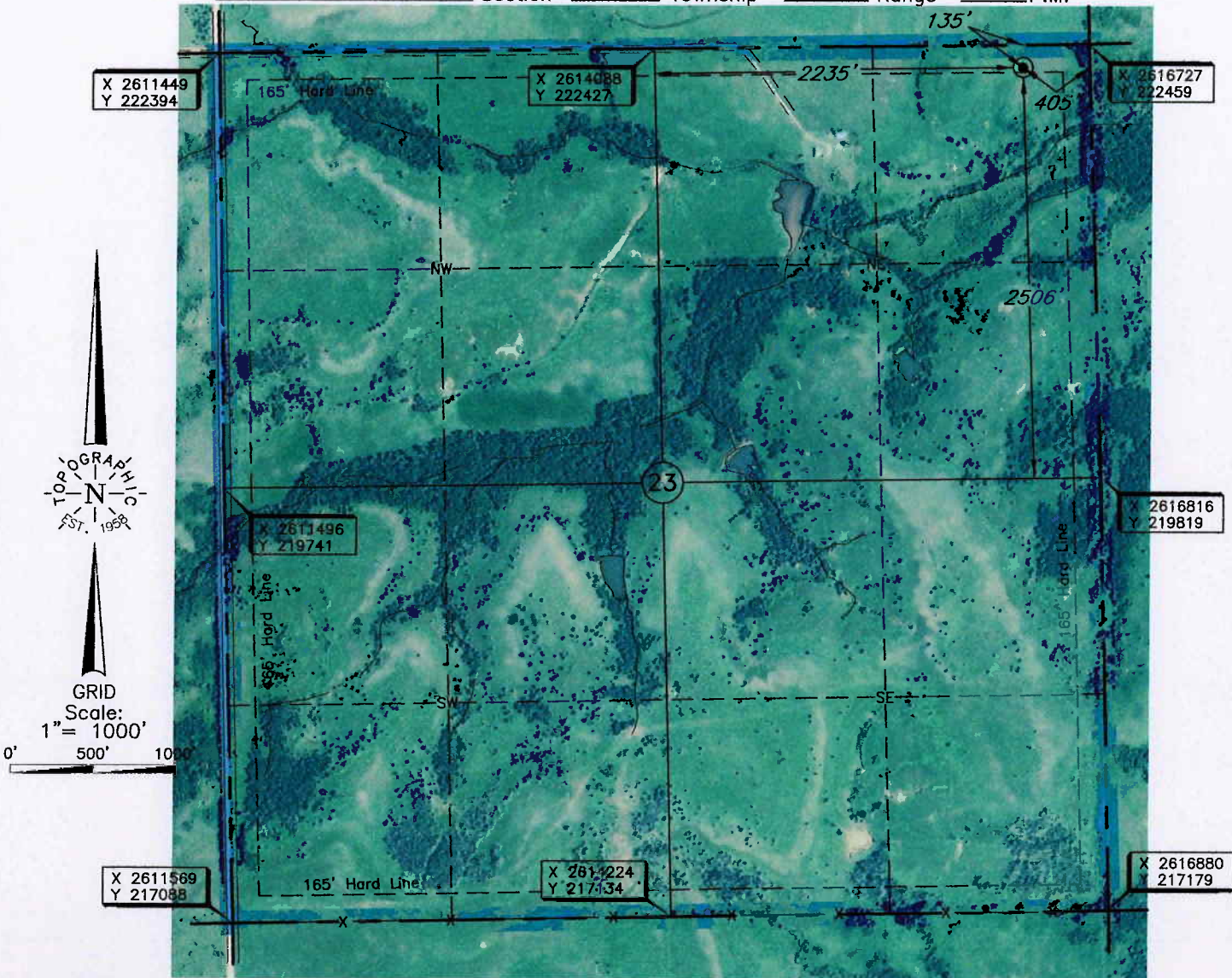
Kansas Lic. No. 1552



CHAUTAUQUA

County, Kansas

135'FNL - 405'FEL Section 23 Township 32S Range 9E P.M.



Distances shown in (parenthesis) are calculated based upon the Quarter Section being 2640 feet, those shown in [brackets] are based on GLO (General Land Office) distances and have NOT been measured on the ground.

CORNER COORDINATES ARE TAKEN FROM POINTS SURVEYED IN THE FIELD.

Operator: NEMAHA OIL AND GAS

Lease Name: LAMPSON SWD

Well No.: 2A

ELEVATION:
1060' Gr. at Stake

Topography & Vegetation Loc. fell terraced pasture

Good Drill Site? Yes Reference Stakes or Alternate Location
 Stakes Set None

Best Accessibility to Location From North off lease road

Distance & Direction from Hwy Jct or Town From Cedarvale, Kansas, go ± 5.5 miles East on US Hwy 166, then go ± 10 miles North, and 0.5 mile East to the North Quarter Corner of Section 23, T32S - R9E.

Date of Drawing: Dec. 14, 2012

NMB

Invoice # 193768A Date Staked: Dec. 13, 2012

CERTIFICATE:

I, Michael Blake Brown a Kansas Licensed Land Surveyor and an authorized agent of Topographic Land Surveyors, do hereby certify that the above described well location was surveyed and staked on the ground as shown herein.

Kansas Lic. No. 1552



This information was gathered with a GPS receiver with Sub-Meter accuracy.

DATUM: NAD-27
 LAT: 37°15'28.8\"N
 LONG: 96°22'56.0\"W
 LAT: 37.258011400' N
 LONG: 96.382222790' W
 STATE PLANE COORDINATES: (US Feet)
 ZONE: KS SOUTH
 X: 2616326
 Y: 222319

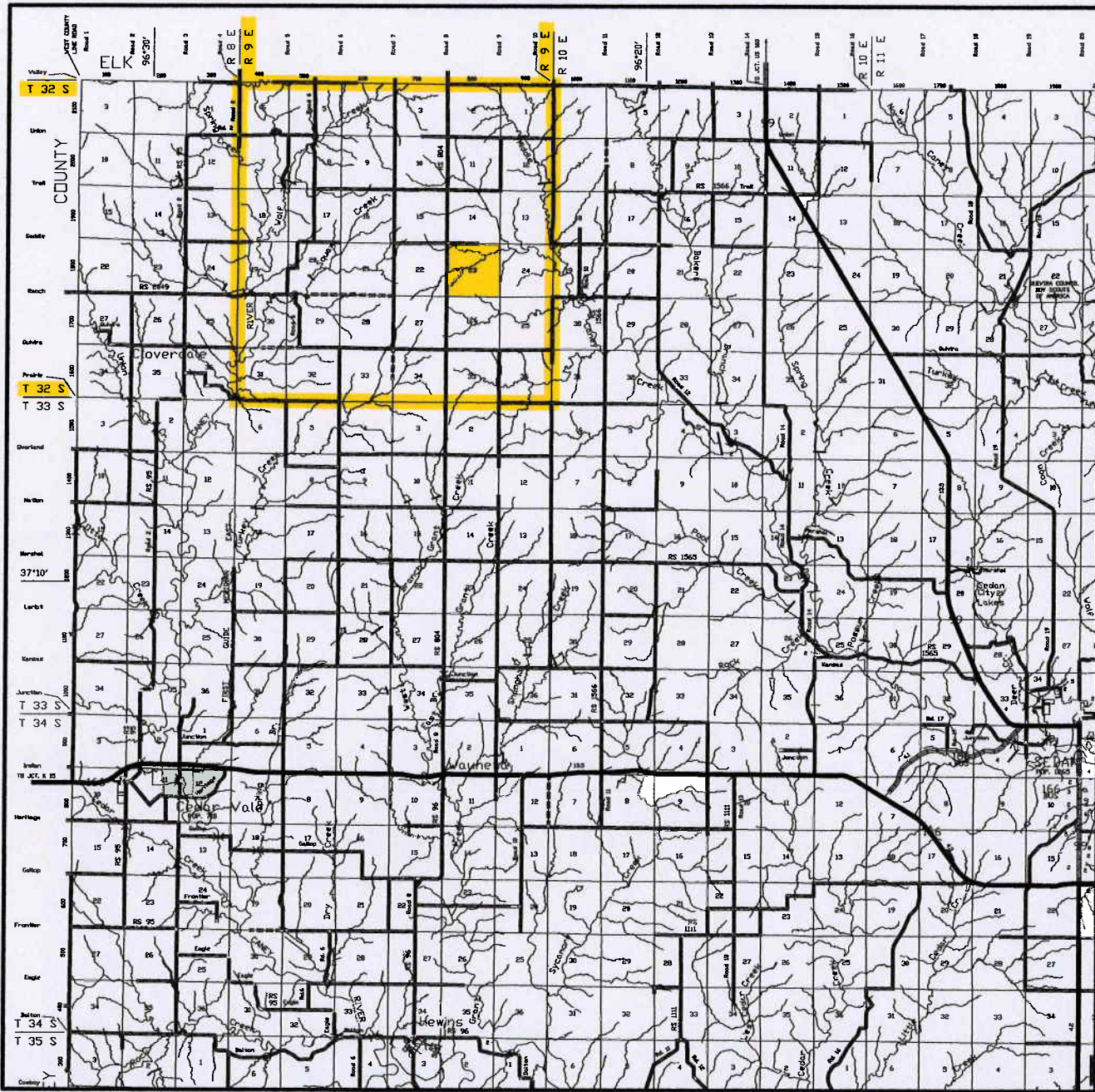
TOPOGRAPHIC LAND SURVEYORS

Surveying and Mapping for the Energy Industry

6709 North Classen Blvd. Oklahoma City, OK 73116 www.topographic.com

Telephone Numbers: Local (405) 843-4847 Toll Free (800) 654-3219

VICINITY MAP



Scale: 1" = 3 Miles

Sec. 23 Twp. 32S Rng. 9E

County CHAUTAUQUA State KS

Operator NEMAHA OIL AND GAS

TOPOGRAPHIC
SURVEYING • MAPPING • GIS • GPS
LAND SURVEYORS

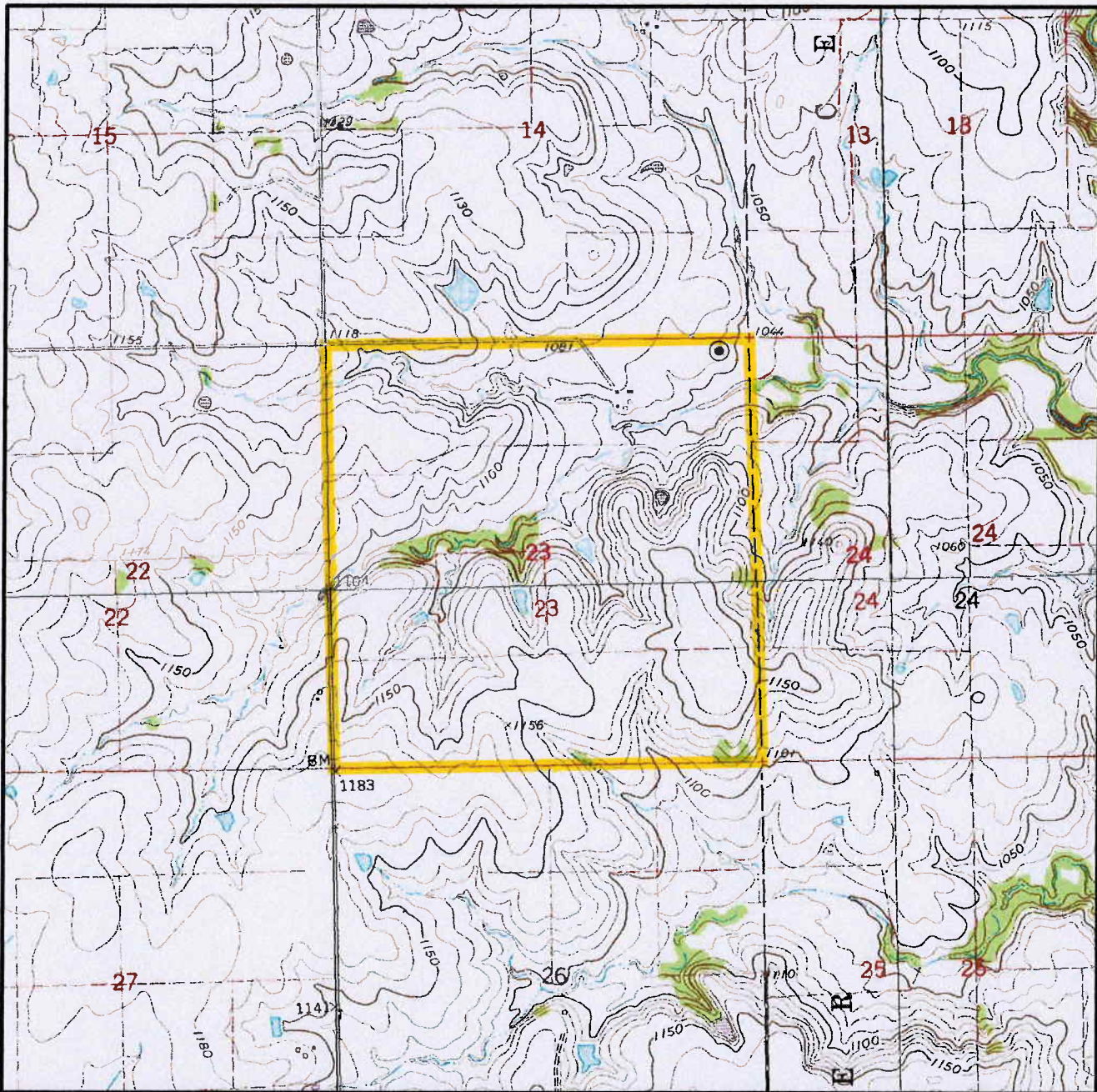
TOPOGRAPHIC LAND SURVEYORS

Surveying and Mapping for the Energy Industry

6709 North Classen Blvd. Oklahoma City, OK 73116 www.topographic.com

Telephone Numbers: Local (405) 843-4847 Toll Free (800) 654-3219

LOCATION & ELEVATION VERIFICATION MAP



Sec. 23 Twp. 32S Rng. 9E

County CHAUTAUQUA State KS

Operator NEMAHA OIL AND GAS

Description 135'FNL - 405'FEL

Lease LAMPSON SWD 2A

Elevation 1060' Gr. at Stake

U.S.G.S. Topographic
Quadrangle Map GRENOLA, KS

Above Background Data from
U.S.G.S. Topographic Map

Scale: 1"=2000'

Contour Interval 10'

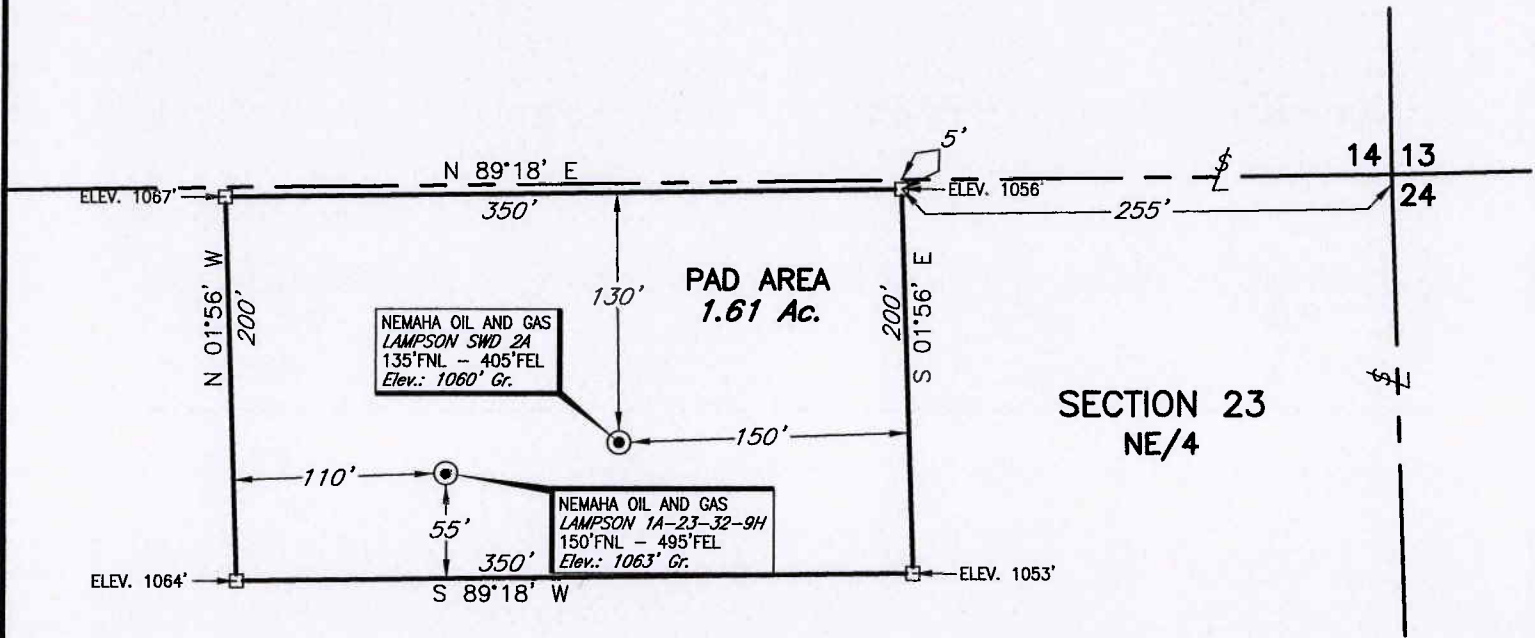
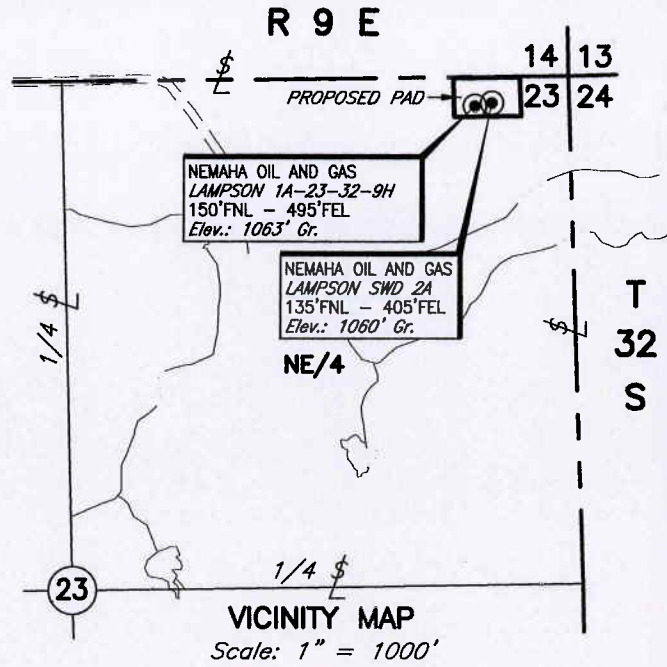
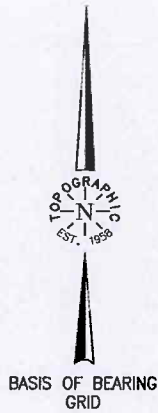
This location has been very carefully staked on the ground according to the best official survey records, maps and photographs available to us, but its accuracy is not guaranteed. When elevation is shown hereon it is the ground elevation of the location stake. Review this plat and inform us immediately of any possible discrepancy.

TOPOGRAPHIC

SURVEYING • MAPPING • GIS • GPS

LAND SURVEYORS

T 32 S - R 9 E



PLAT SHOWING
**PROPOSED PAD AREA IN THE
 NE/4 OF SECTION 23, T32S - R9E
 CHAUTAUQUA COUNTY, KANSAS**

NO.	REVISION	DATE	BY
SURV. BY:	JM	12/13/12	
DRAWN BY:	NMB		
APPROVED BY:	MBB		

This plat was prepared exclusively for
NEMAHA OIL & GAS
 TULSA, OKLAHOMA
 and may not be relied upon by any other entity without the written consent of Topographic Land Surveyors of Oklahoma.
 SURVEYING AND MAPPING BY
TOPOGRAPHIC LAND SURVEYORS
 6709 N. Classen, Okla. City, OK. 73116 (405) 843-4847
 Certificate of Authorization No. LS-99, Exp. December 31, 2013

SCALE:	1"=100'
DATE:	12/14/12
FILE:	L4003A.DWG
DRAWING NUMBER:	114028-L4-003-A
SHEET	1 OF 1