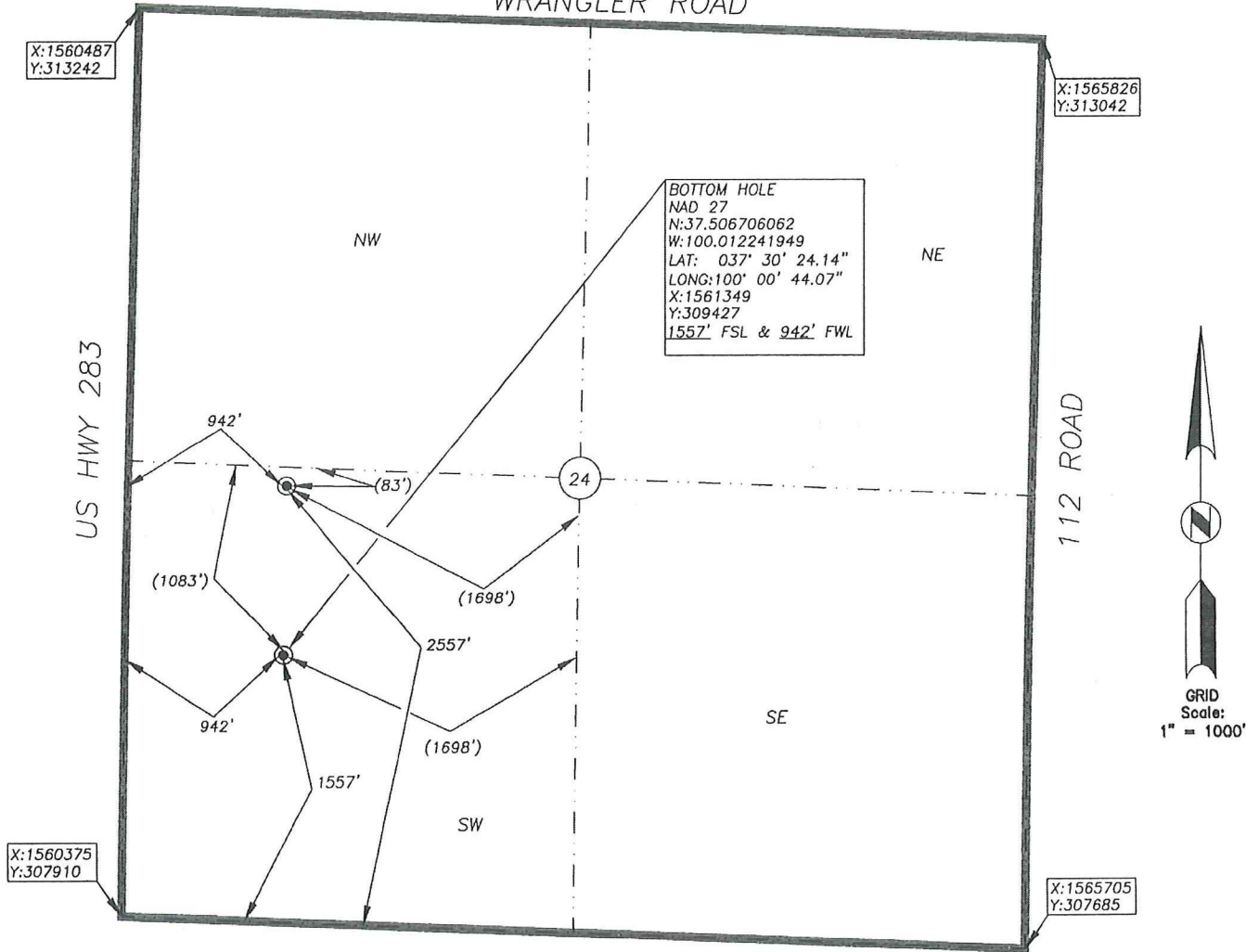


BHC RHODES

CIVIL ENGINEERS • SURVEYORS
 901 N. 8th Street, Suite 100 Kansas City, KS 66101 * p. (913) 371-5300 * f. (913) 371-2677
 BHC RHODES is a trademark of Brungardt Hononmichl & Company, P.A.

Ford County, Kansas 2557' FSL & 942' FWL Section 24 Township 29S Range 25W 6th P.M.

WRANGLER ROAD



BOTTOM HOLE INFORMATION PROVIDED BY OPERATOR LISTED, NOT SURVEYED. SECTION CORNER COORDINATES ARE BASED ON OBSERVED POSSESSION EVIDENCE.

DISTANCES SHOWN IN (PARENTHESIS) ARE CALCULATED BASED UPON THE QUARTER. SECTION BEING 2640 FEET AND HAVE NOT BEEN MEASURED ON THE GROUND.

ELEVATION:
2615

Operator: SandRidge Exploration and Production, LLC.
 Lease Name: Rooney 2925 Well No: 3-24H
 Topography & Vegetation: Agricultural dry land farm ground
 Reference Stakes or Alternate Location

Good Drill Site? Yes Stakes Set: _____
 Best Accessibility to Location: From South and West by road
 Distance & Direction from Hwy Jct or Town: From the City of From the City of Minneloa, KS. North on U.S. Hwy. 283 for ±4.5mi., turn Right (East) at field entrance for ±0.2 mi. to site.

BHC Rhodes Job No.: 016330.00.69
 Field: MDK Office: DLU
 DATUM: NAD 27
 LAT: 37.509452649
 LONG: 100.012225656
 LAT: 037° 30' 34.03"
 LONG: 100° 00' 44.01"
 STATE PLANE
 COORDINATES: (U.S. FEET)
 ZONE: 1502 KS
 X: 1561370.2670
 Y: 310427.2930

Date of Drawing: 2012-12-13 Date Staked: 2012-12-11

CERTIFICATE:

I, Michael D. Klein a Kansas License Land surveyor and a authorized agent of BHC Rhodes, do hereby certify that the above described well location was surveyed and staked on the ground as shown herein.

Kansas Lic. No. 778



Unit Outline

14

13

18

23

24

19

26

25

30

1 inch = 2000 feet



Rooney 2925 3-24H RE
Ford County, Kansas
Unit Outline

Date: 21 December, 2012