

GEOLOGIST'S REPORT

DRILLING TIME AND SAMPLE LOG

BACH OIL PRODUCTION

WELL: KNAPE #3

LOC.: 2310' FSL & 1775' FWL
 SEC. 13-1-19W
 PHILLIPS COUNTY, KANSAS
 API: 15-147-20689-00-00

DRILLING CONTR.: MURFIN RIG #8
 SPUD: 09-18-12 COMP: 09-23-12
 MUD UP: 2850' TYPE MUD: CHEM.
 DRILL TIME: 3000 to' RTD
 RTD: 3630' LTD: 3632'
 SAMPLES SAVED: 3050'-RTD
 GEOLOGIST: ROBERT J. PETERSEN

ELEVATION

KB: 2143
 GL: 2138
 LOG MEASURED
 FROM: KB

SURFACE CASING

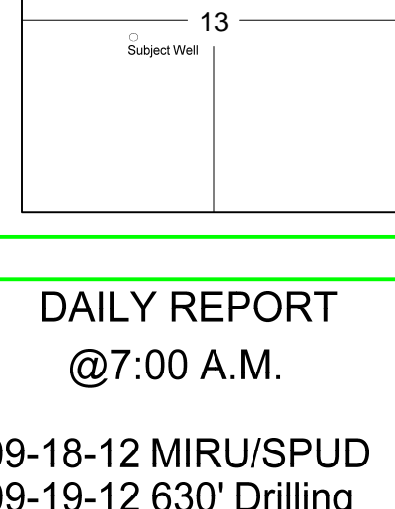
20# 8 5/8 "
 Casing set @ 226
 w/170 SX

PRODUCTION CASING

5 1/2" Casing set
 WELL LOG SURVEYS
 DIL/CDL/MICRO

ELECTRIC LOG TOPS

FORMATION	DEPTH	DATUM	POS.
Stone Corral	1768	+375	-3
Base Stone Corral	1796	+347	-3
Topeka	3121	-978	+2
Heebner	3327	-1184	Flat
Toronto	3355	-1212	+1
Lansing	3373	-1230	+2
Muncie Creek	3484	-1341	Flat
Stark	3548	-1405	+1
BKC	3592	-1449	-2
RTD	3632	-1489	N/A



REFERENCE WELL:

Bach Oil Prod.
 JK Unit #1
 250' FSL & 1840' FWL
 13-1-19W

REMARKS AND RECOMMENDATIONS

Production casing has been run to further test this well for commercial production.

Respectfully submitted,

Robert J. Petersen
 Robert J Petersen

DAILY REPORT

@7:00 A.M.

09-18-12 MIRU/SPUD
 09-19-12 630' Drilling
 09-20-12 2380' Drilling
 09-21-12 3280' Drilling
 09-22-12 3465' DST#1
 09-23-12 3630' RTD

