



DRILL STEM TEST REPORT

Prepared For: **Carrie Exploration**

210 west 22nd Hays
Kansas 67601

ATTN: Ron Herold

Alan C-1

1-22s-10w-Reno

Start Date: 2012.12.02 @ 10:48:00

End Date: 2012.12.02 @ 17:51:30

Job Ticket #: 17705 DST #: 3

Superior Testers Enterprises LLC
PO Box 138 Great Bend KS 67530
1-800-792-6902

Printed: 2012.12.03 @ 06:08:22



DRILL STEM TEST REPORT

Carrie Exploration

1-22s-10w-Reno

210 w est 22nd Hays
Kansas 67601

Alan C-1

Job Ticket: 17705

DST#: 3

ATTN: Ron Herold

Test Start: 2012.12.02 @ 10:48:00

GENERAL INFORMATION:

Formation: **Simpson sand**

Deviated: No Whipstock: ft (KB)

Time Tool Opened: 13:57:00

Time Test Ended: 17:51:30

Test Type: Conventional Bottom Hole (Initial)

Tester: Dustin Ellis

Unit No: 3315-Great Bend-80

Interval: 3492.00 ft (KB) To 3542.00 ft (KB) (TVD)

Reference Elevations: 1731.00 ft (KB)

Total Depth: 3592.00 ft (KB) (TVD)

1724.00 ft (CF)

Hole Diameter: 7.88 inches Hole Condition: Fair

KB to GR/CF: 7.00 ft

Serial #: 8400 Outside

Press@RunDepth: 71.23 psia @ 3539.00 ft (KB)

Capacity: 5000.00 psia

Start Date: 2012.12.02 End Date: 2012.12.02

Last Calib.: 2012.12.03

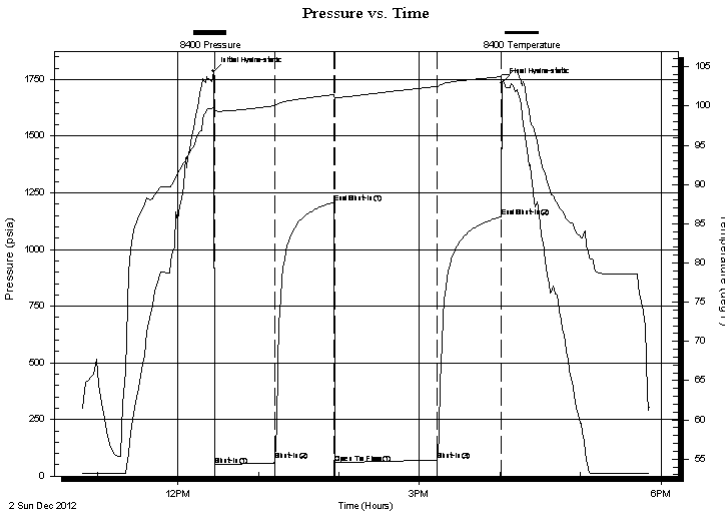
Start Time: 10:48:00 End Time: 17:51:30

Time On Btm: 2012.12.02 @ 12:26:30

Time Off Btm: 2012.12.02 @ 16:01:30

TEST COMMENT: 1st Open 45 minutes Weak surface blow reached 1 inch.
1st Shut in 45 minutes No blow back
2nd Open 60 minutes Weak surface blow reached 1 inch
2nd Shut in 60 minutes No blow back

PRESSURE SUMMARY



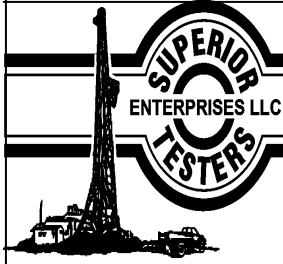
Time (Min.)	Pressure (psia)	Temp (deg F)	Annotation
0	1786.92	99.86	Initial Hydro-static
1	49.47	99.41	Shut-In(1)
46	70.05	100.06	Shut-In(2)
90	1208.07	101.48	End Shut-In(1)
91	58.87	101.01	Open To Flow (1)
167	71.23	102.50	Shut-In(3)
215	1145.64	103.75	End Shut-In(2)
215	1736.70	104.02	Final Hydro-static

Recovery

Length (ft)	Description	Volume (bbl)
12.00	Muddy water 95%Mud 5%Water	0.17

Gas Rates

Choke (inches)	Pressure (psia)	Gas Rate (Mcf/d)



DRILL STEM TEST REPORT

Carrie Exploration
210 w est 22nd Hays
Kansas 67601
ATTN: Ron Herold

1-22s-10w-Reno
Alan C-1
Job Ticket: 17705 **DST#: 3**
Test Start: 2012.12.02 @ 10:48:00

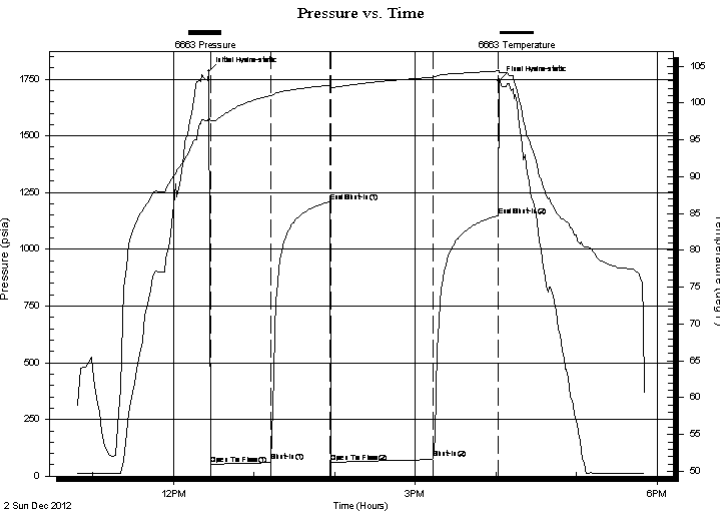
GENERAL INFORMATION:

Formation: **Simpson sand**
Deviated: No Whipstock: ft (KB)
Time Tool Opened: 13:57:00
Time Test Ended: 17:51:30
Test Type: Conventional Bottom Hole (Initial)
Tester: Dustin Ellis
Unit No: 3315-Great Bend-80
Interval: **3492.00 ft (KB) To 3542.00 ft (KB) (TVD)**
Reference Elevations: 1731.00 ft (KB)
Total Depth: 3592.00 ft (KB) (TVD) 1724.00 ft (CF)
Hole Diameter: 7.88 inches Hole Condition: Fair KB to GR/CF: 7.00 ft

Serial #: 6663 Inside

Press@RunDepth: 1148.49 psia @ 3538.00 ft (KB) Capacity: 5000.00 psia
Start Date: 2012.12.02 End Date: 2012.12.02 Last Calib.: 2012.12.03
Start Time: 10:48:00 End Time: 17:51:00 Time On Btm: 2012.12.02 @ 12:26:30
Time Off Btm: 2012.12.02 @ 16:02:00

TEST COMMENT: 1st Open 45 minutes Weak surface blow reached 1 inch.
1st Shut in 45 minutes No blow back
2nd Open 60 minutes Weak surface blow reached 1 inch
2nd Shut in 60 minutes No blow back



PRESSURE SUMMARY

Time (Min.)	Pressure (psia)	Temp (deg F)	Annotation
0	1785.14	98.04	Initial Hydro-static
1	51.21	97.64	Open To Flow (1)
46	63.24	100.98	Shut-In(1)
90	1210.20	102.42	End Shut-In(1)
91	60.61	102.14	Open To Flow (2)
167	78.90	103.50	Shut-In(2)
215	1148.49	104.34	End Shut-In(2)
216	1742.99	104.42	Final Hydro-static

Recovery

Length (ft)	Description	Volume (bbl)
12.00	Muddy water 95%Mud 5%Water	0.17

Gas Rates

Choke (inches)	Pressure (psia)	Gas Rate (Mcf/d)
----------------	-----------------	------------------



DRILL STEM TEST REPORT

TOOL DIAGRAM

Carrie Exploration

1-22s-10w-Reno

210 w est 22nd Hays
Kansas 67601

Alan C-1

Job Ticket: 17705

DST#: 3

ATTN: Ron Herold

Test Start: 2012.12.02 @ 10:48:00

Tool Information

Drill Pipe:	Length: 3502.00 ft	Diameter: 3.80 inches	Volume: 49.12 bbl	Tool Weight:	2000.00 lb
Heavy Wt. Pipe:	Length: 0.00 ft	Diameter: 0.00 inches	Volume: 0.00 bbl	Weight set on Packer:	20000.00 lb
Drill Collar:	Length: 0.00 ft	Diameter: 0.00 inches	Volume: 0.00 bbl	Weight to Pull Loose:	37000.00 lb
			<u>Total Volume: 49.12 bbl</u>	Tool Chased	0.00 ft
Drill Pipe Above KB:	30.00 ft			String Weight: Initial	34000.00 lb
Depth to Top Packer:	3492.00 ft			Final	34000.00 lb
Depth to Bottom Packer:	ft				
Interval between Packers:	50.00 ft				
Tool Length:	70.00 ft				
Number of Packers:	2	Diameter: 6.75 inches			
Tool Comments:					

Tool Description	Length (ft)	Serial No.	Position	Depth (ft)	Accum. Lengths
------------------	-------------	------------	----------	------------	----------------

Shut-In Tool	5.00			3477.00	
Hydraulic Tool	5.00			3482.00	
Packer	5.00			3487.00	20.00 Bottom Of Top Packer
Packer	5.00			3492.00	
Anchor	45.00			3537.00	
Recorder	1.00	6663	Inside	3538.00	
Recorder	1.00	8400	Outside	3539.00	
Bullnose	3.00			3542.00	50.00 Bottom Packers & Anchor

Total Tool Length: 70.00



DRILL STEM TEST REPORT

FLUID SUMMARY

Carrie Exploration

1-22s-10w-Reno

210 w est 22nd Hays
Kansas 67601

Alan C-1

Job Ticket: 17705

DST#: 3

ATTN: Ron Herold

Test Start: 2012.12.02 @ 10:48:00

Mud and Cushion Information

Mud Type: Gel Chem

Cushion Type:

Oil API:

deg API

Mud Weight: 9.00 lb/gal

Cushion Length:

ft

Water Salinity:

ppm

Viscosity: 48.00 sec/qt

Cushion Volume:

bbl

Water Loss: 9.80 in³

Gas Cushion Type:

Resistivity: ohm.m

Gas Cushion Pressure:

psia

Salinity: 4000.00 ppm

Filter Cake: 1.00 inches

Recovery Information

Recovery Table

Length ft	Description	Volume bbl
12.00	Muddy water 95%Mud 5%Water	0.168

Total Length: 12.00 ft Total Volume: 0.168 bbl

Num Fluid Samples: 0

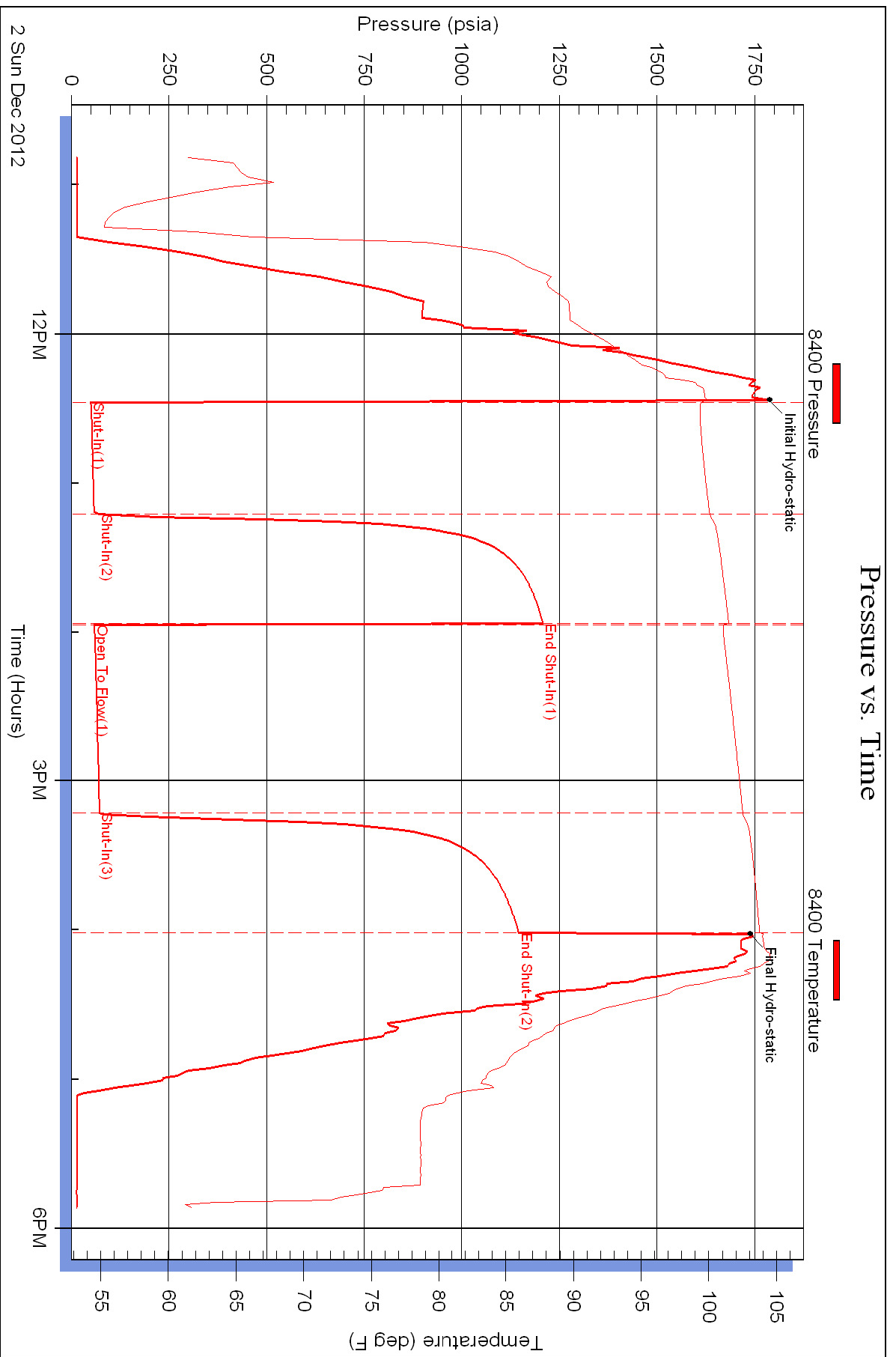
Num Gas Bombs: 0

Serial #:

Laboratory Name:

Laboratory Location:

Recovery Comments:



Pressure vs. Time

