

GEOLOGIST'S REPORT

DRILLING TIME AND SAMPLE LOG

BACH OIL PRODUCTION

WELL: KNAPE #2

LOC.: 2540' FNL & 530' FWL
 SEC. 18-1-18W
 PHILLIPS COUNTY, KANSAS
 API: 15-147-20691-00-00

DRILLING CONTR.: MURFIN RIG #8
 SPUD: 09-24-12 COMP: 09-28-12
 MUD UP: 2950' TYPE MUD: CHEM.
 DRILL TIME: 3000 to' RTD
 RTD: 3621' LTD: 3625'
 SAMPLES SAVED: 3050'-RTD
 GEOLOGIST: ROBERT J. PETERSEN

ELEVATION

KB: 2152
 GL: 2147
 LOG MEASURED
 FROM: KB

SURFACE CASING

20# 8 5/8 "
 Casing set @ 230
 w/160 SX

PRODUCTION CASING

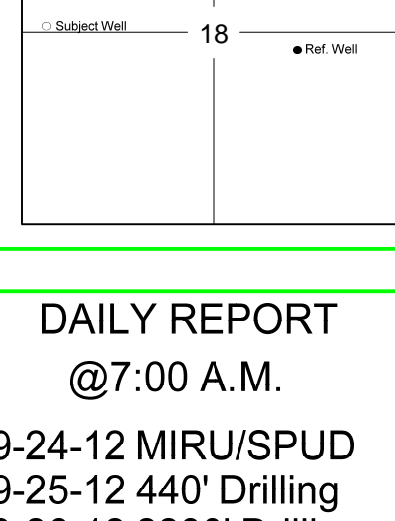
5 1/2" Casing set

WELL LOG SURVEYS

DIL/CDL/MICRO

ELECTRIC LOG TOPS

FORMATION	DEPTH	DATUM	POS.
Stone Corral	1759	+393	-2
Base Stone Corral	1782	+370	-5
Topeka	3119	-967	-7
Heebner	3326	-1174	-8
Toronto	3357	-1205	-10
Lansing	3375	-1223	-9
Muncie Creek	3485	-1333	-11
Stark	3551	-1399	-10
BKC	3594	-1442	-10



REFERENCE WELL:

Bach Oil Prod.
 Knape#1
 2570' FSL & 1420' FEL
 18-1-18W

REMARKS AND RECOMMENDATIONS

Production casing has been run to further test this well for commercial production.

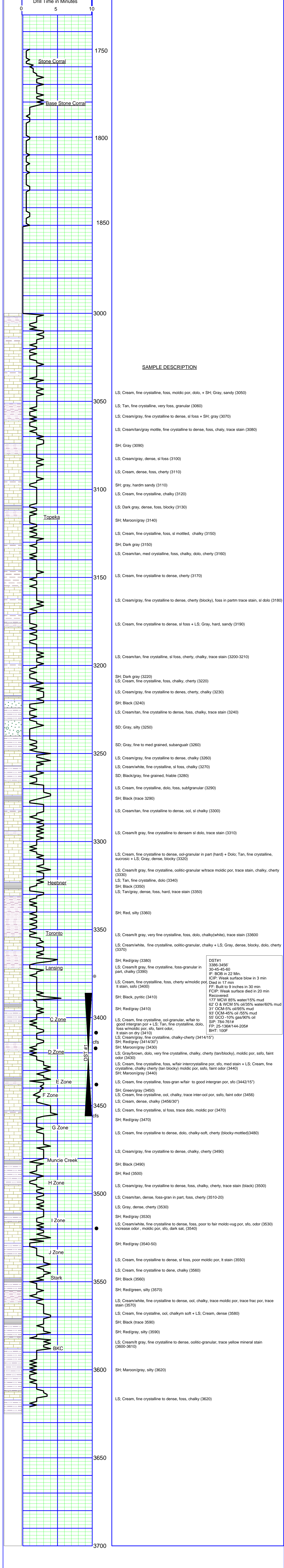
Respectfully submitted,

Robert J. Petersen
 Robert J Petersen

DAILY REPORT

@7:00 A.M.

09-24-12 MIRU/SPUD
 09-25-12 440' Drilling
 09-26-12 2280' Drilling
 09-27-12 3220' Drilling
 09-28-12 3456' Drilling
 09-29-12 3621' RTD
 Conditioning hole for casing



DST#1
 3386-3456'
 30-45-45-60
 IF: BOB in 22 Min.
 ICIP: Weak surface blow in 3 min
 Died in 17 min
 FF: Built to 9 inches in 30 min
 FCIP: Weak surface died in 20 min
 Recovered:
 177' MCW 85% water/15% mud
 62' O & WCM 5% oil/35% water/60% mud
 93' OCM-5% oil/95% mud
 55' GCO -10% gas/90% oil
 SP: 784-761#
 FP: 25-136#/144-205#
 BHT: 100F