

TIM PRIEST
Petroleum Geologist
(316)-213-6115

GEOLOGIST'S REPORT
DRILLING TIME AND SAMPLE LOG

COMPANY SHAKESPEARE OIL CO.
LEASE Campbell 3-8
FIELD Wildcat
LOCATION 450' FNL, 1760' FEL
SEC 8 TWSP 13S RGE 32W
COUNTY Logan STATE Kansas

ELEVATIONS

KB 2988'

DF _____

GL 2978'

Measurements Are All
From KB

CONTRACTOR HD DrillingRig #2
SPUD 11-29-12 COMP 12-12-12
RTD 4680' LTD 4680'
MUD UP 3500' TYPE MUD Chemical

CASING

CONDUCTOR N/A

SURFACE 8-5/8" @ 218'

PRODUCTION None

SAMPLES SAVED FROM 3850' to RTD
DRILLING TIME KEPT FROM 3800' to RTD
SAMPLES EXAMINED FROM 3850' to RTD
GEOLOGICAL SUPERVISION FROM 3800' to RTD
GEOLOGIST ON WELL Tim Priest

**ELECTRICAL
SURVEYS**

CND;D/SP;P.E.

Micro

By: Weatherford

FORMATION TOPS	ELECTRIC LOG	SAMPLE
Anhydrite	2477 (+511)	2477 (+511)
Heebner Shale	3935 (-947)	3937 (-949)
Lansing	3981 (-993)	3982 (-994)
Stark	4210 (-1222)	4212 (-1224)
BKC	4284 (-1296)	4284 (-1296)
Fort Scott	4466 (-1480)	4466 (-1480)
Cherokee Shale	4497 (-1509)	4498 (-1510)
Mississippian	4602 (-1614)	4603 (-1615)

		8	

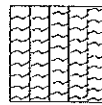
REMARKS Due to the negative results of DSTs it was decided to plug and abandon the well.

Respectfully Submitted,

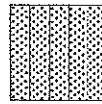
Tim Priest
Petroleum Geologist

API #15-109-21094-00-00

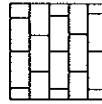
LEGEND



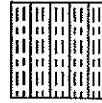
Anhydrite



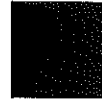
Sandstone



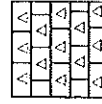
Limestone



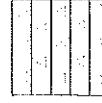
Shale



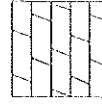
Carb Sh



Cherty LS



Chert



Dolomite

DEPTH

LITHOLOGY

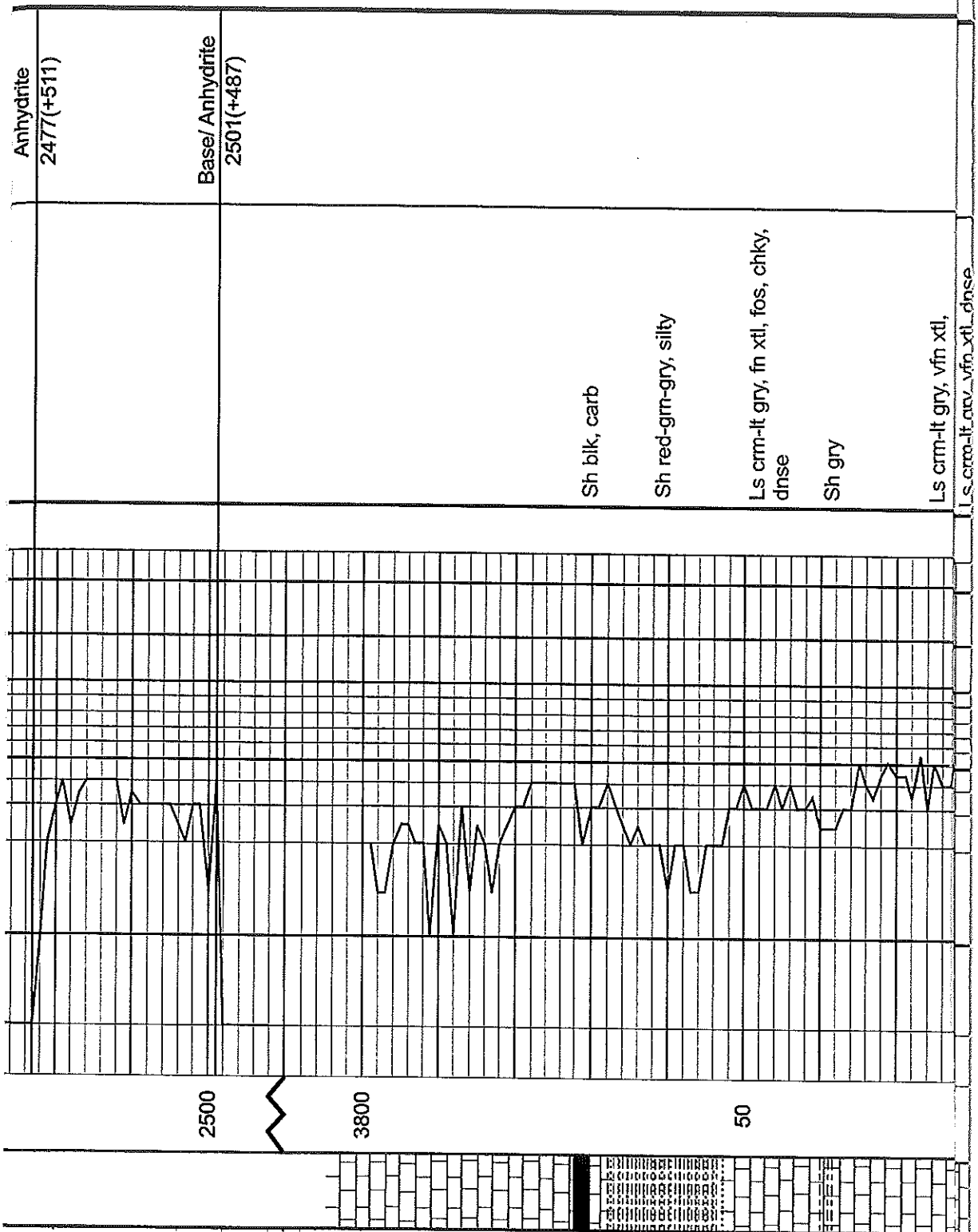
DRILLING TIME IN
MINUTES PER FOOT
Rate of Penetration Decreases

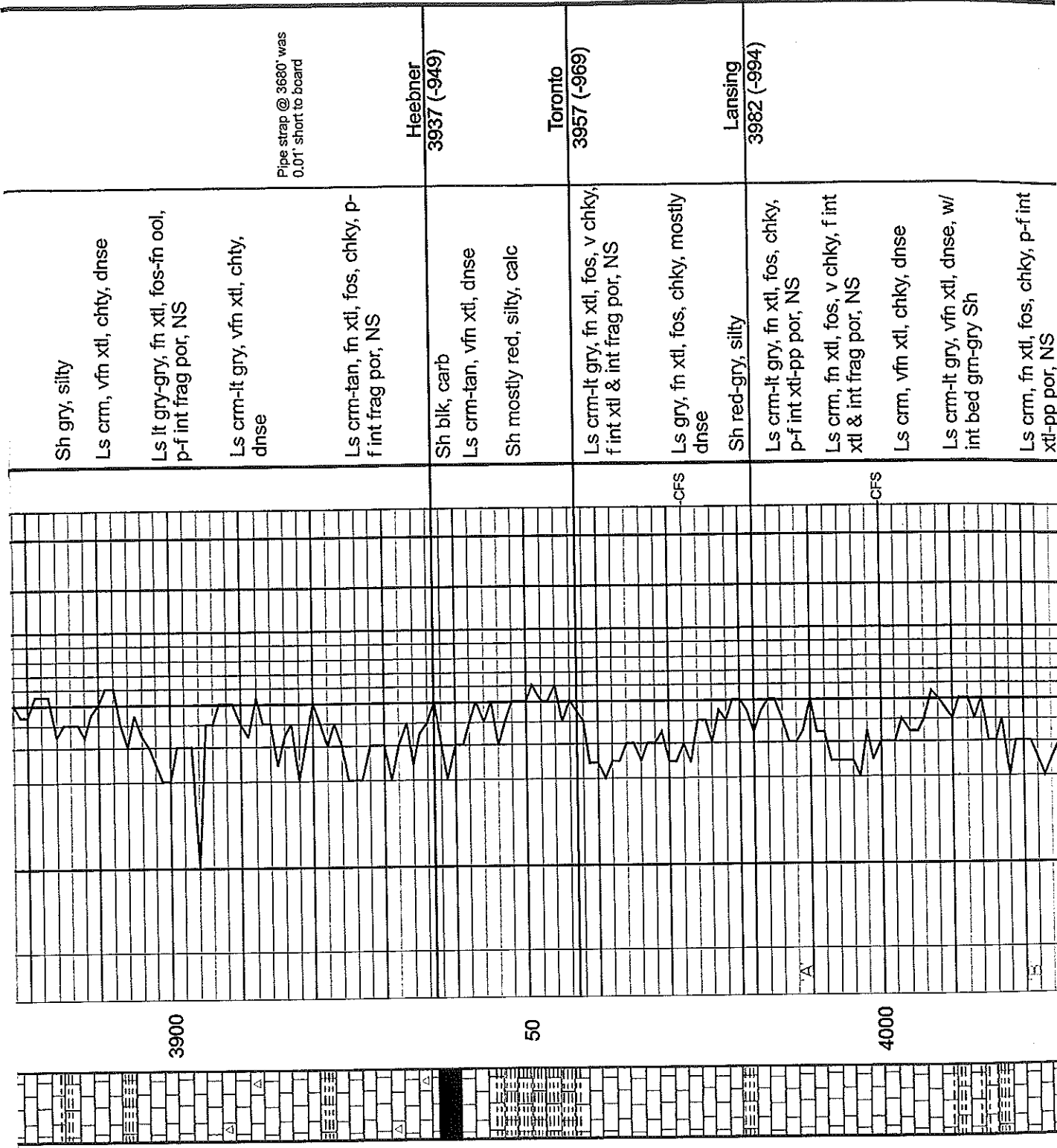


.5 1.0 5 10 15 20 30

SAMPLE DESCRIPTION

REMARKS





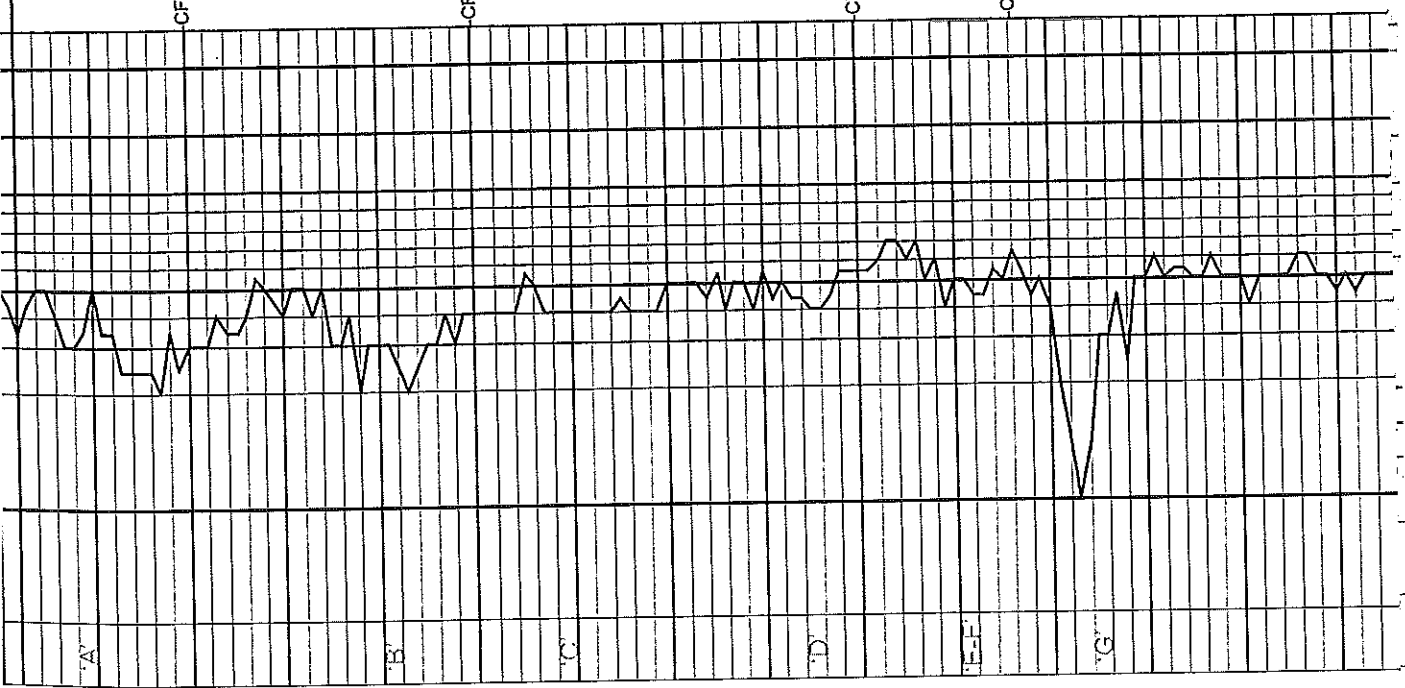
Ls crm-lt gry, fn xtl, fos, chky, p-f int xtl-pp por, NS
 Ls crm, fn xtl, fos, v chky, f int xtl & int frag por, NS
 Ls crm, vfn xtl, chky, dnse
 Ls crm-lt gry, vfn xtl, dnse, w/ int bed grn-gry Sh
 Ls crm, fn xtl, fos, chky, p-f int xtl-pp por, NS
 Sh red
 Ls crm-lt gry, vfn xtl, sli chky, dnse
 Sh grn-gry
 Ls crm-lt gry, vfn xtl, sli chky, dnse
 Sh grn-gry
 Ls crm, fn xtl, fos-sli ool, chky, p int xtl-pp por, sptd str on few pcs, VSSFO, v sli odor
 Sh grn-gry
 Ls crm-lt gry, fn xtl, fos-ool, chky, f int xtl & int frag por, sptd str on few pcs, VSSFO, v sli odor, dull fluor
 Ls lt gry-gry, vfn xtl, dnse
 Sh grn-gry, w/int bed gry Ls

CFS

CFS

CFS

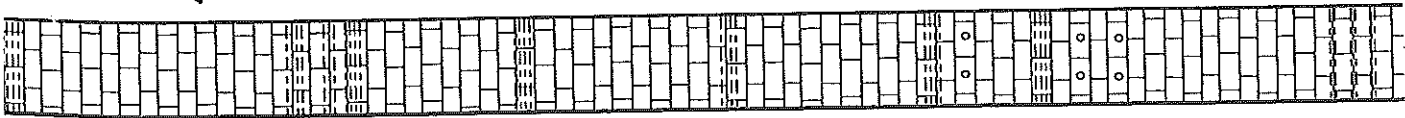
CFS

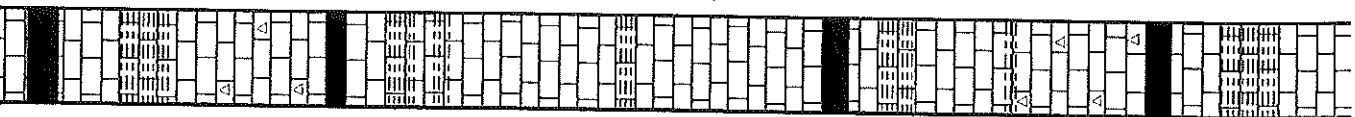
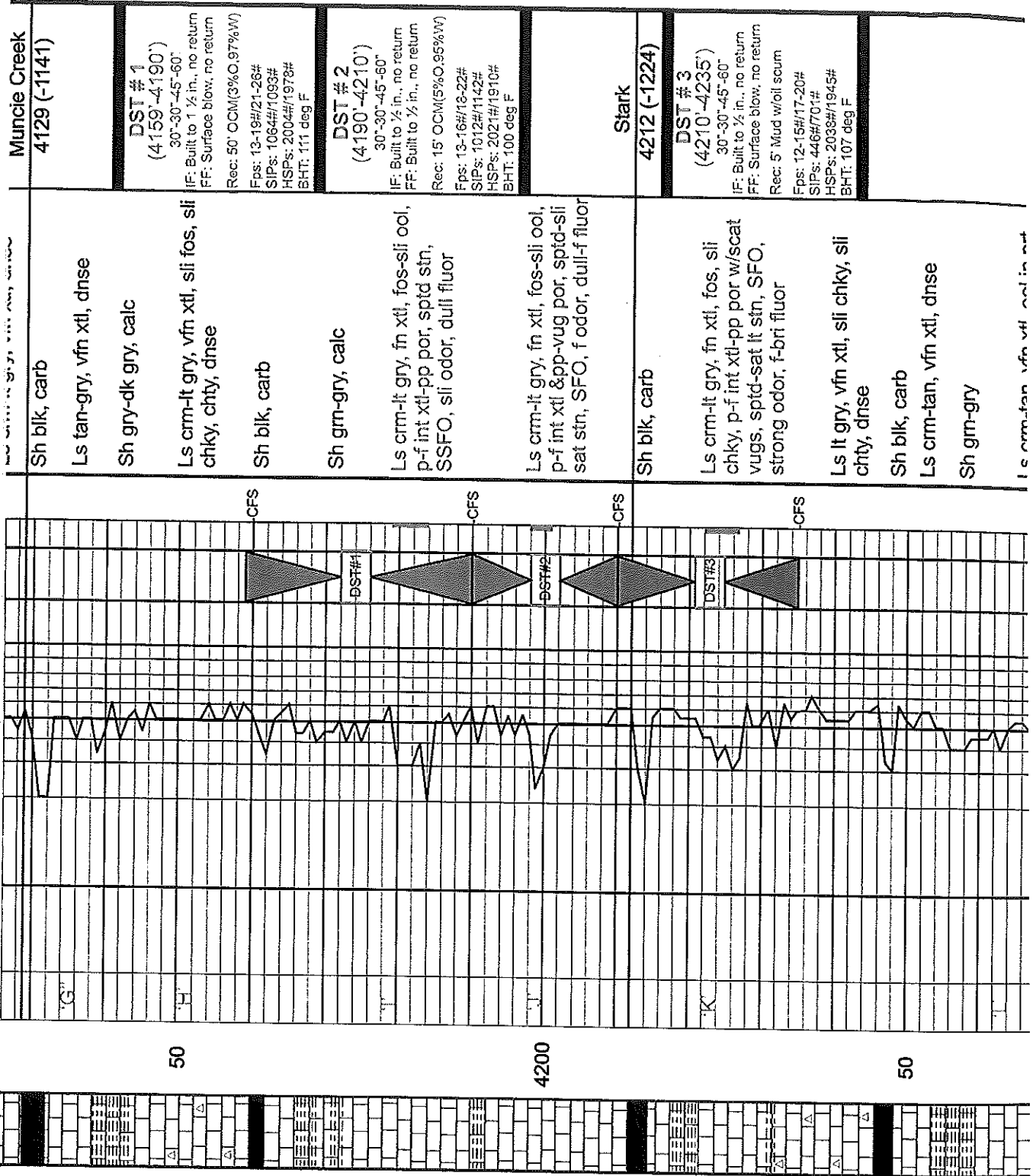


4000

50

4100





50

4200

50

chty, dnse
Sh blk, carb
Ls crm-tan, vfn xtl, dnse
Sh grn-gry
Ls crm-tan, vfn xtl, ool in prt, dnse
Sh red-gry

Sh var col
Ls crm-lt gry, vfn xtl, dnse
Sh var col, silty-sli sandy
Sh gry
Sh var col, silty
Sh gry

Ls crm-lt gry, vfn xtl, dnse
Ls crm-lt gry, fn xtl, fos, chky,
p-f int xtl-pp por w/few vugs,
spta-sli sat blk stn, SFO, sli
odor, dull-no fluor
Sh red-grn-gry
Ls crm-lt gry, vfn xtl, chky,
dnse
Ls crm-tan, mic xtl, ool, dnse
Sh gry-blk
Ls crm-tan, vfn xtl, sli fos,
dnse

Ls crm-lt gry, mic xtl, dnse

B/K.C.
4284 (-1296)

Marmaton
4314 (-1326)

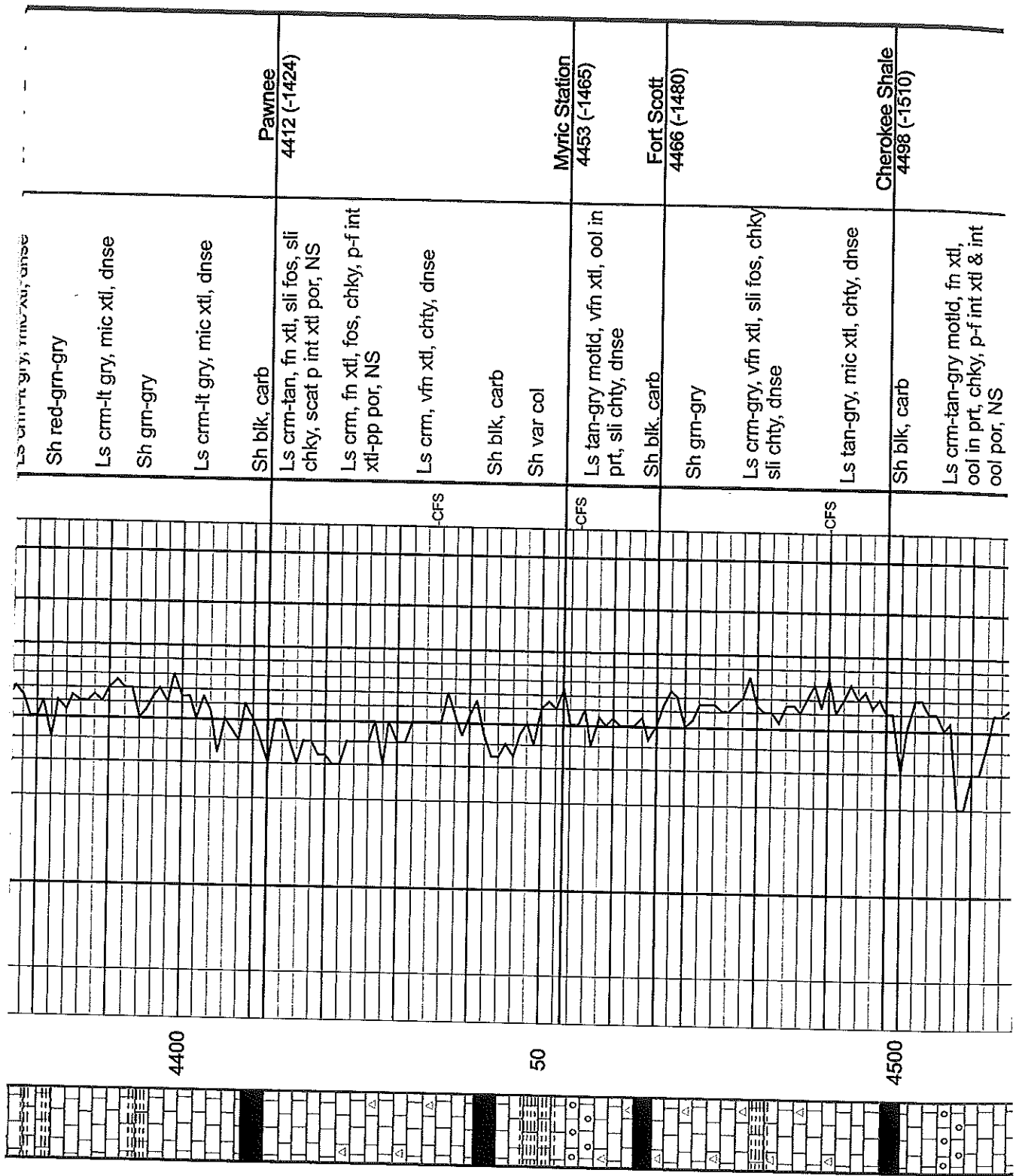
DST # 4
(4318'-4350')
30'-30"-45'-60"
IF: Built to 2 1/2 in., no return
FF: No blow, no return
Rec: 40' WM w/oil spks in
tool.(18%W,82%M)
Fps: 19-31#/33-37#
SIPs: 94#/65#
HSPs: 2100#/1994#
BHT: 111 deg F
Chlor: 70,000ppm



50

4300

50



Ls crm-tan gry, fn xtl, dnse

Sh red-grn-gry

Ls crm-lt gry, mic xtl, dnse

Sh gm-gry

Ls crm-lt gry, mic xtl, dnse

Sh blk, carb

Pawnee
4412 (-1424)

Ls crm-tan, fn xtl, sli fos, sli chky, scat p int xtl por, NS

Ls crm, fn xtl, fos, chky, p-f int xtl-pp por, NS

Ls crm, vfn xtl, chty, dnse

Sh blk, carb

Sh var col

Myric Station
4453 (-1465)

Ls tan-gry motld, vfn xtl, ool in prt, sli chty, dnse

Sh blk, carb

Fort Scott
4466 (-1480)

Sh gm-gry

Ls crm-gry, vfn xtl, sli fos, chky, sli chty, dnse

Ls tan-gry, mic xtl, chty, dnse

Sh blk, carb

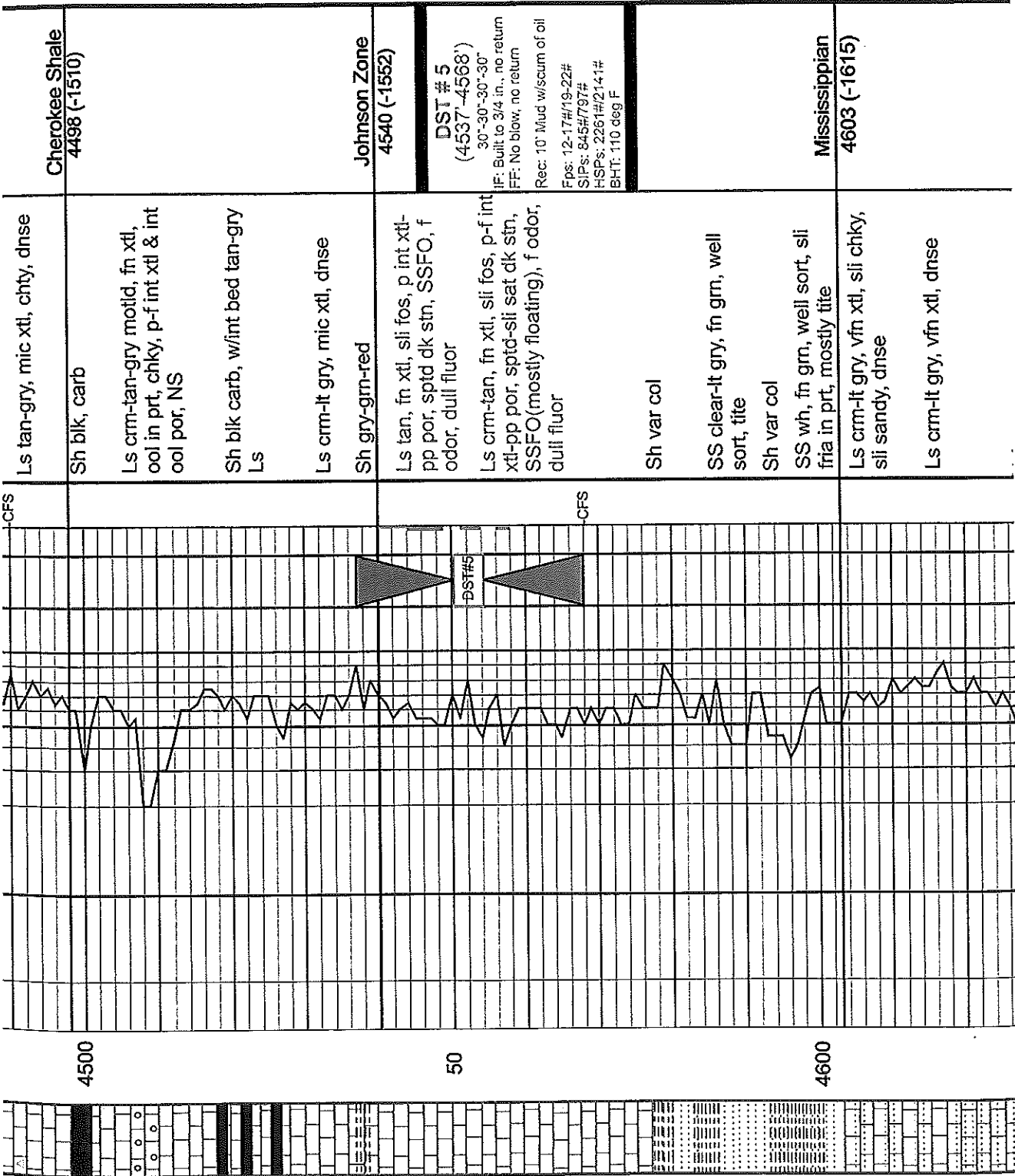
Cherokee Shale
4496 (-1510)

Ls crm-tan-gry motld, fn xtl, ool in prt, chky, p-f int xtl & int ool por, NS

4400

50

4500



Cherokee Shale
4498 (-1510)

Ls tan-gry, mic xtl, chty, dnse
Sh blk, carb
Ls crm-tan-gry motid, fn xtl, ool in prt, chky, p-f int xtl & int ool por, NS
Sh blk carb, w/int bed tan-gry Ls
Ls crm-lt gry, mic xtl, dnse

Johnson Zone
4540 (-1552)

Sh gry-grn-red
Ls tan, fn xtl, sli fos, p int xtl-pp por, sptd dk str, SSFO, f odor, dull fluor
Ls crm-tan, fn xtl, sli fos, p-f int xtl-pp por, sptd-sli sat dk str, SSFO (mostly floating), f odor, dull fluor

DST # 5
(4537-4568)

30'-30"-30"-30"
IF: Built to 3/4 in., no return
FF: No blow, no return
Rec: 10' Mud w/iscum of oil
Fps: 12-17#/19-22#
SIPs: 845#/797#
HSPs: 2261#/2141#
BHT: 110 deg F

Sh var col

SS clear-lt gry, fn grn, well sort, tite
Sh var col
SS wh, fn grn, well sort, sli fria in prt, mostly tite

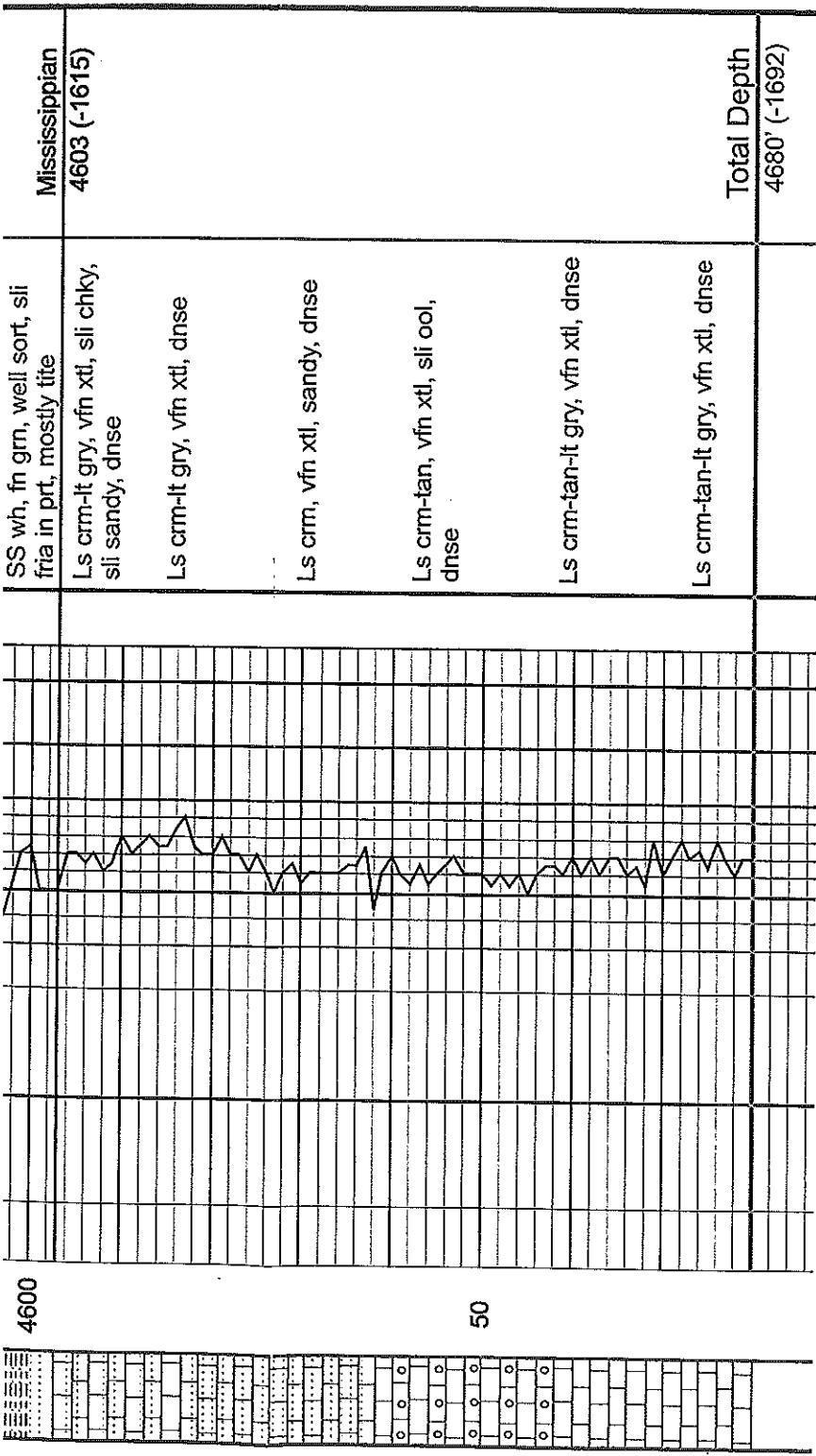
Mississippian
4603 (-1615)

Ls crm-lt gry, vfn xtl, sli chky, sli sandy, dnse
Ls crm-lt gry, vfn xtl, dnse

4500

50

4600



4600

50

Mississippian
4603 (-1615)

Total Depth
4680' (-1692)

SS wh, fn grm, well sort, sli
fria in prt, mostly tite

Ls crm-lt gry, vfn xtl, sli chky,
sli sandy, dnse

Ls crm-lt gry, vfn xtl, dnse

Ls crm, vfn xtl, sandy, dnse

Ls crm-tan, vfn xtl, sli ool,
dnse

Ls crm-tan-lt gry, vfn xtl, dnse

Ls crm-tan-lt gry, vfn xtl, dnse