

THIS DRAWING DOES NOT REPRESENT A BOUNDARY SURVEY. DISTANCES, COORDINATES AND BEARINGS SHOWN ARE NOT INTENDED TO BE DEFINITIVE IN ESTABLISHING ACTUAL TITLE BOUNDARIES. THIS DRAWING IS FOR CONSTRUCTION PURPOSES ONLY.  
 All Bearings, Distances, and Coordinates shown hereon are based on the Kansas State Plane Coordinate System, N.A.D. 27 Datum, South Zone.

AS-DRILLED  
 BOTTOM HOLE  
 2,025' FEL & 295' FNL  
 OF SECTION 16  
 LAT: 37.969261  
 LON: -97.214491  
 X: 2,370,565  
 Y: 476,848

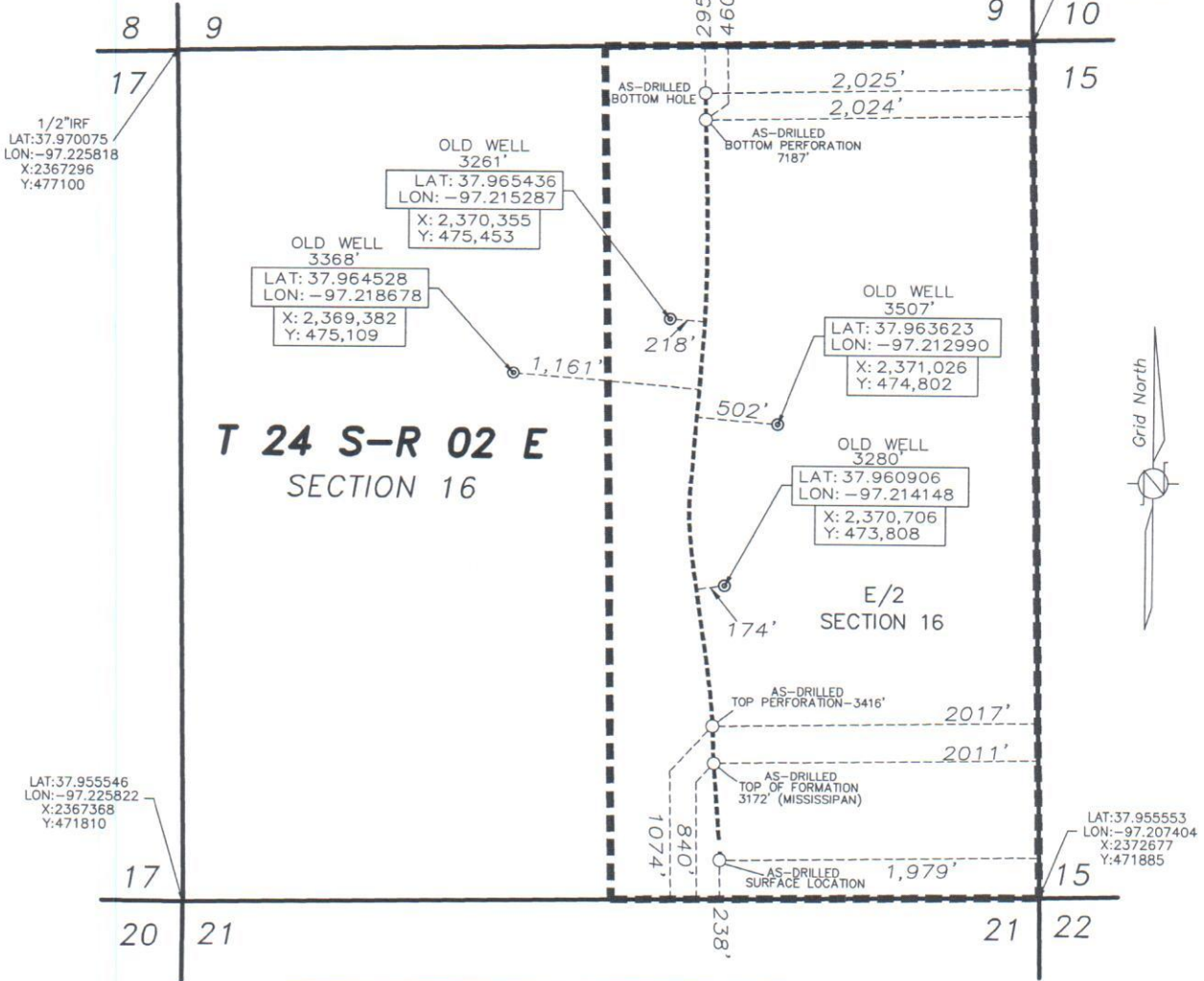
AS-DRILLED  
 SURFACE LOCATION  
 1,979' FEL & 238' FSL  
 OF SECTION 16  
 LAT: 37.956195  
 LON: -97.214272  
 X: 2,370,694  
 Y: 472,092  
 ELEV: 1438'

AS-DRILLED TOP  
 TOP OF FORMATION  
 2011' FEL & 840' FSL  
 OF SECTION 16  
 LAT: 37.957851  
 LON: -97.214389  
 X: 2,370,652  
 Y: 472,694

AS-DRILLED  
 TOP PERFORATION  
 2017' FEL & 1074' FSL  
 OF SECTION 16  
 LAT: 37.958491  
 LON: -97.214413  
 X: 2,370,642  
 Y: 472,927

AS-DRILLED  
 BOTTOM PERFORATION  
 2024' FEL & 460' FNL  
 OF SECTION 16  
 LAT: 37.968808  
 LON: -97.214486  
 X: 2,370,569  
 Y: 476,683

LAT: 37.970069  
 LON: -97.207471  
 X: 2372585  
 Y: 477171



**T 24 S-R 02 E**  
 SECTION 16

E/2  
 SECTION 16

OLD WELLS SHOWN HEREON ARE FROM RECORD INFO.

I hereby certify this plat to be true and correct to the the best of my knowledge and belief.

*Sharon Cook*

Sharon Cook

----- = UNIT LINE

REVIEW COPY

**AS-DRILLED PLAT**  
**ENCANA OIL & GAS (USA) INC.**  
**NATTIER 16H-2**  
**HARVEY COUNTY, KANSAS**  
**SCALE: 1" = 1000'**