

THIS DRAWING DOES NOT REPRESENT A BOUNDARY SURVEY. DISTANCES, COORDINATES AND BEARINGS SHOWN ARE NOT INTENDED TO BE DEFINITIVE IN ESTABLISHING ACTUAL TITLE BOUNDARY. THIS DRAWING IS FOR CONSTRUCTION PURPOSES ONLY.
 All Bearings, Distances, and Coordinates shown hereon are based on the Kansas State Plane Coordinate System, N.A.D. 27 Datum, South Zone.

AS-DRILLED SURFACE LOCATION
 1,989' FEL & 249' FSL OF SECTION 1
 LAT: 38.334506
 LON: -100.032260
 X: 1,560,497
 Y: 610,907
 ELEV: 2,358'

AS-DRILLED TOP OF FORMATION
 2024' FEL & 893' FSL OF SECTION 1
 LAT: 38.336273
 LON: -100.032401
 X: 1,560,467
 Y: 611,551

AS-DRILLED TOP PERFORMANCE
 2155' FEL & 2650' FNL OF SECTION 1
 LAT: 38.341106
 LON: -100.032906
 X: 1,560,351
 Y: 613,313

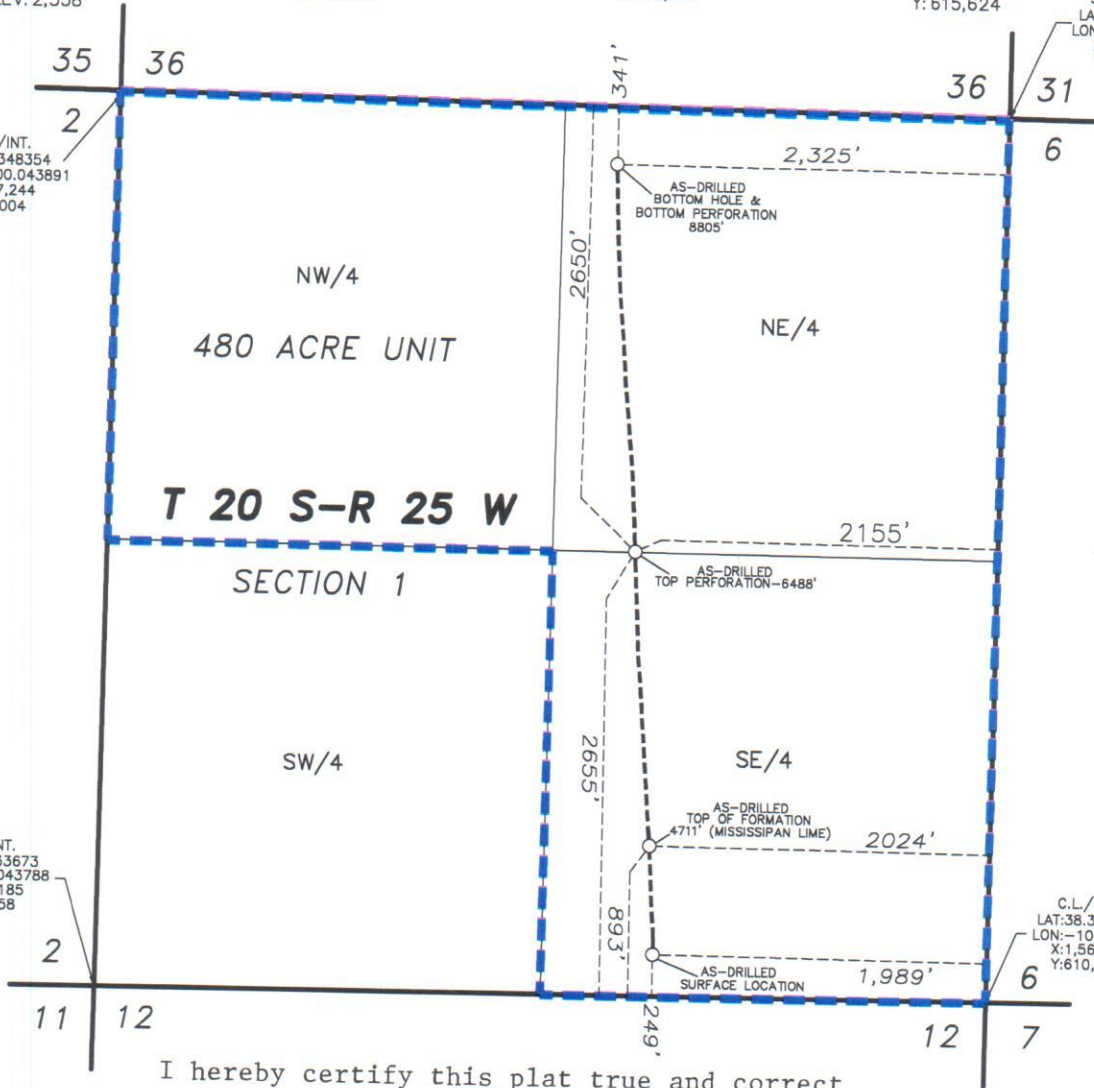
AS-DRILLED BOTTOM HOLE & BOTTOM PERFORMANCE
 2,325' FEL & 341' FNL OF SECTION 1
 LAT: 38.347445
 LON: -100.033560
 X: 1,560,202
 Y: 615,624

SPIKE N.L.F.
 LAT: 38.348403
 LON: -100.025462
 X: 1,562,529
 Y: 615,935

C.L./INT.
 LAT: 38.348354
 LON: -100.043891
 X: 1,557,244
 Y: 616,004

C.L./INT.
 LAT: 38.333673
 LON: -100.043788
 X: 1,557,185
 Y: 610,658

C.L./INT.
 LAT: 38.333913
 LON: -100.025321
 X: 1,562,484
 Y: 610,658



I hereby certify this plat true and correct to the best of my knowledge and belief.

Sharon Cook

REVIEW COPY Sharon Cook

--- = UNIT LINE

**AS-DRILLED PLAT
 ENCANA OIL & GAS (USA) INC.
 KERR 1H-2
 NESS COUNTY, KANSAS
 SCALE: 1" = 1000'**