



Scale: 5" / 100'
Measured Depth Log

Well Name Dealy SWD 2-31

Location Langdon

State Kansas

County Reno

Country United States

Rig Number Duke 20

API Number 15-155-21614

Field Wildcat

Drilling Completed 12/5/2012

Surface Coordinat... N/2 N/2 NE NE, Section 31. T24S-R9W

Ground Elevation 1,718

K.B. Elevation 1,730

Logged Interval 3,200 To 4,265

Total Depth 4,265

Formation Arbuckle

Operator

Company Dorado E&P Partners, LLC

Rock Types

UNKNOWN	DOLOMITE	SHALE GRAY	TILL
ANHYDRITE	CHERT	SHALE COLORED	BENTONITE
GYPSUM	COAL	SILTSTONE	TUFF
SALT	MARLSTONE	SANDSTONE	IGNEOUS
SIDERITE or LIMONITE	CLAYSTONE	CONGLOMERATE	METAMORPHIC
LIMESTONE	SHALE	BRECCIA	

Accessories

Fossils

- ALGAE
- AMPHIPORA
- BELEMNITE
- BIOCLASTIC
- BRACHIOPOD
- BRYOZOA
- CEPHALOPOD
- CORAL
- CRINOID
- ECHINOID

Fossil

- F FOSSIL
- GASTROPOD
- OOLITE
- OSTRACOD
- PELECYPOD
- PELLET
- PISOLITE
- PLANT REMAINS
- PLANT SPORES
- SCAPHOPOD
- STROMATOPOROID

Minerals

Argillaceous

- ARGILLACEOUS
- ARGILLITE GRAIN
- BENTONITE
- BITUMENOUS SUBSTANCE
- BRECCIA FRAGMENTS
- CALCAREOUS
- CARBONACEOUS FLAKES
- CHTDK
- CHTLT
- COAL - THIN BEDS
- DOLOMITIC
- FELDSPAR

Glauconite

- GLAUCONITE
- GYPSIFEROUS
- HEAVY MINERAL
- KAOLIN
- MARLSTONE
- MINERAL CRYSTALS
- NODULES
- PHOSPHATE PELLETS
- PYRITE
- SALT CAST
- SANDY
- SILICEOUS

Stringer

- ANHYDRITE STRINGER
- BENTONITE STRINGER
- COAL STRINGER
- DOLOMITE STRINGER
- GYPSUM STRINGER
- LIMESTONE STRINGER
- MARLSTONE (CALC) STRG
- MARLSTONE (DOL) STRG
- SANDSTONE STRINGER
- SHALE STRINGER

FISH

minerals

FERRUGINOUS PELLETT

SILTY

SILTSTONE STRINGER

FORAMINIFERA

ANHYDRITIC

FERRUGINOUS

TUFFACEOUS

Other Symbols

Oil Show

- DEAD
- EVEN
- QUESTIONABLE
- SPOTTED STAINING

Porosity

- E EARTHY
- FENESTRAL
- FRACTURE
- INTERCRYSTALLINE
- INTEROOLITIC

- MOLDIC
- ORGANIC
- PINPOINT
- VUGGY

Engineering

- BIT
- CONNECTION (LEFT)
- CONNECTION (RIGHT)
- CONNECTION GAS
- CORE - LOST
- CORE - RECOVERED
- DST INTERVAL

- FAULT
- FORMATION TOP
- GAS SHOW
- MN DEPTH
- NORMAL FAULT
- OIL SHOW
- OVERTURNED STRATA
- REVERSE FAULT
- SIDEWALL CORE (LEFT)
- SIDEWALL CORE (RIGHT)
- SLIDE
- SURVEY
- TRIP GAS

- WIRELINE TESTED - LEFT
- WIRELINE TESTED - RT

Rounding

- ANGULAR
- ROUNDED
- SUBANG
- SUBRND

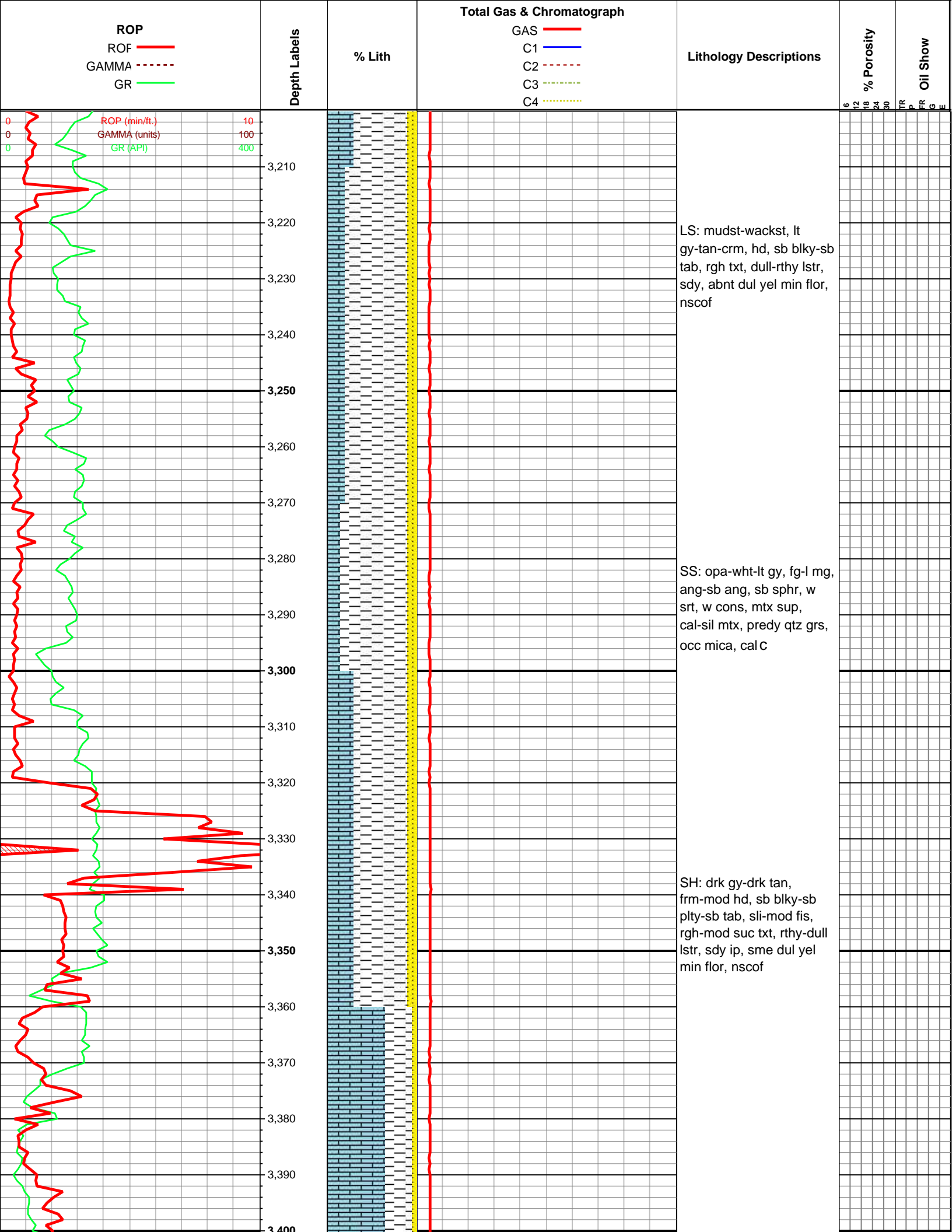
Textures

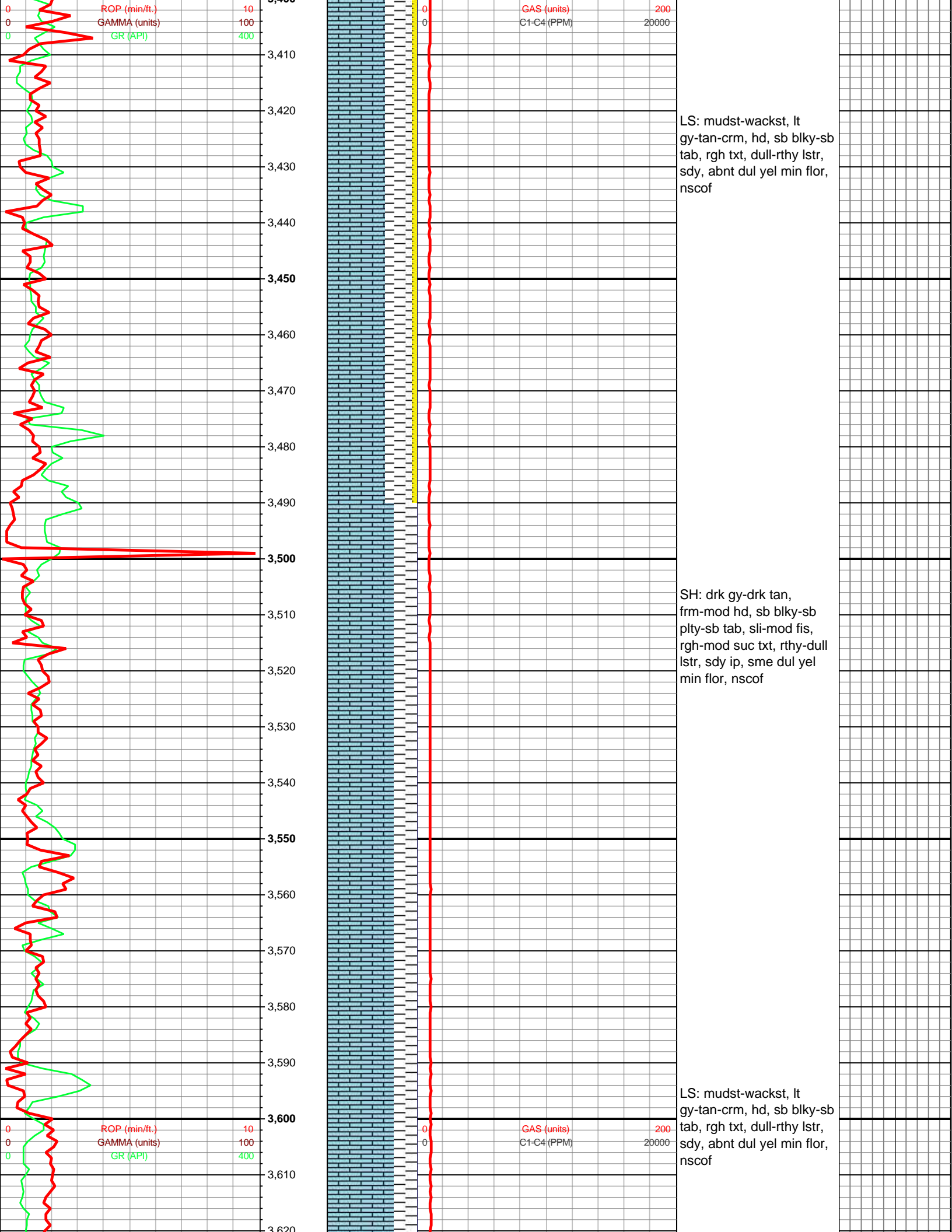
- BOUNDSTONE
- CHALKY
- CRYPTOXLN

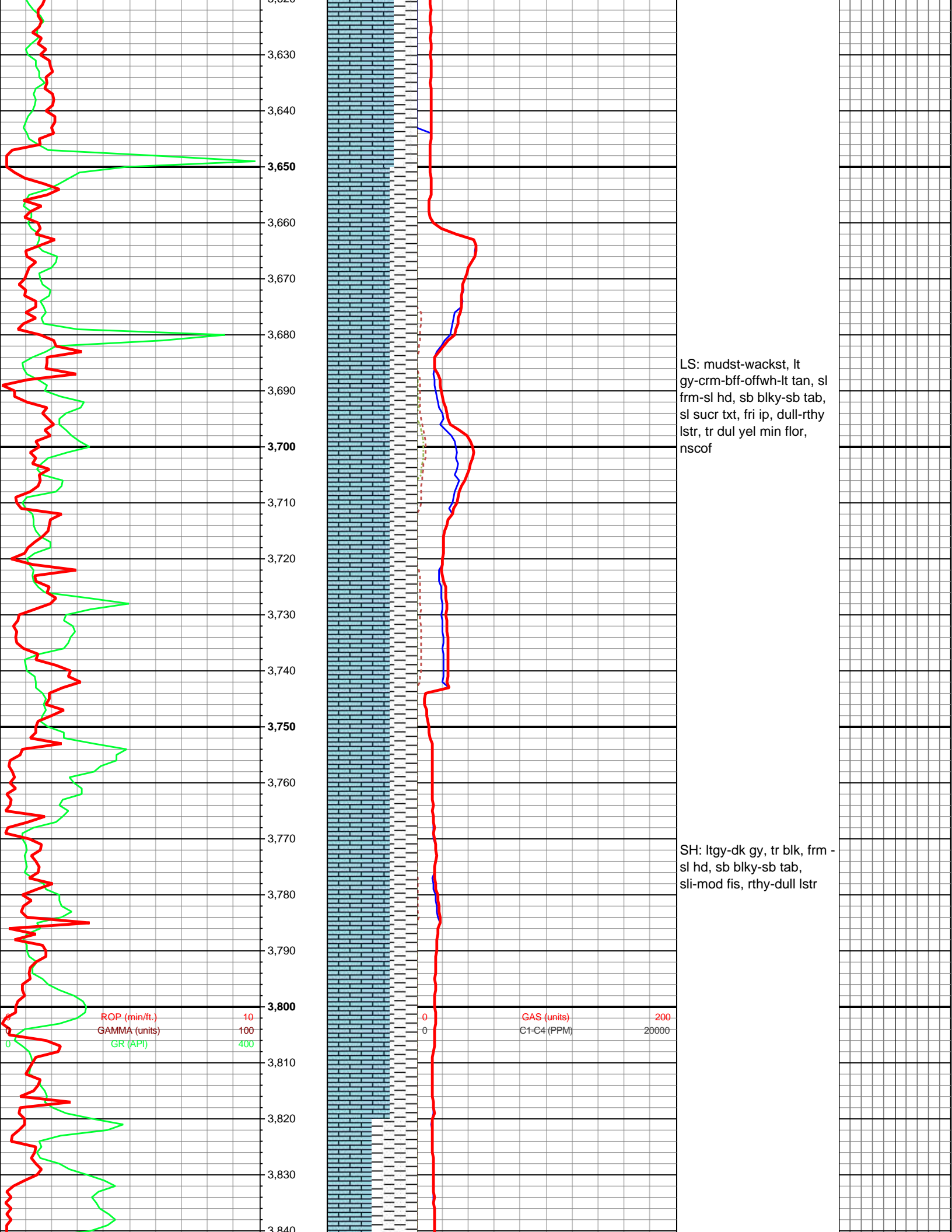
- E EARTHY
- FINELYXLN
- GRAINSTONE
- LITHOGRAPHIC
- MICROXLN
- MUDSTONE
- PACKSTONE
- WACKESTONE

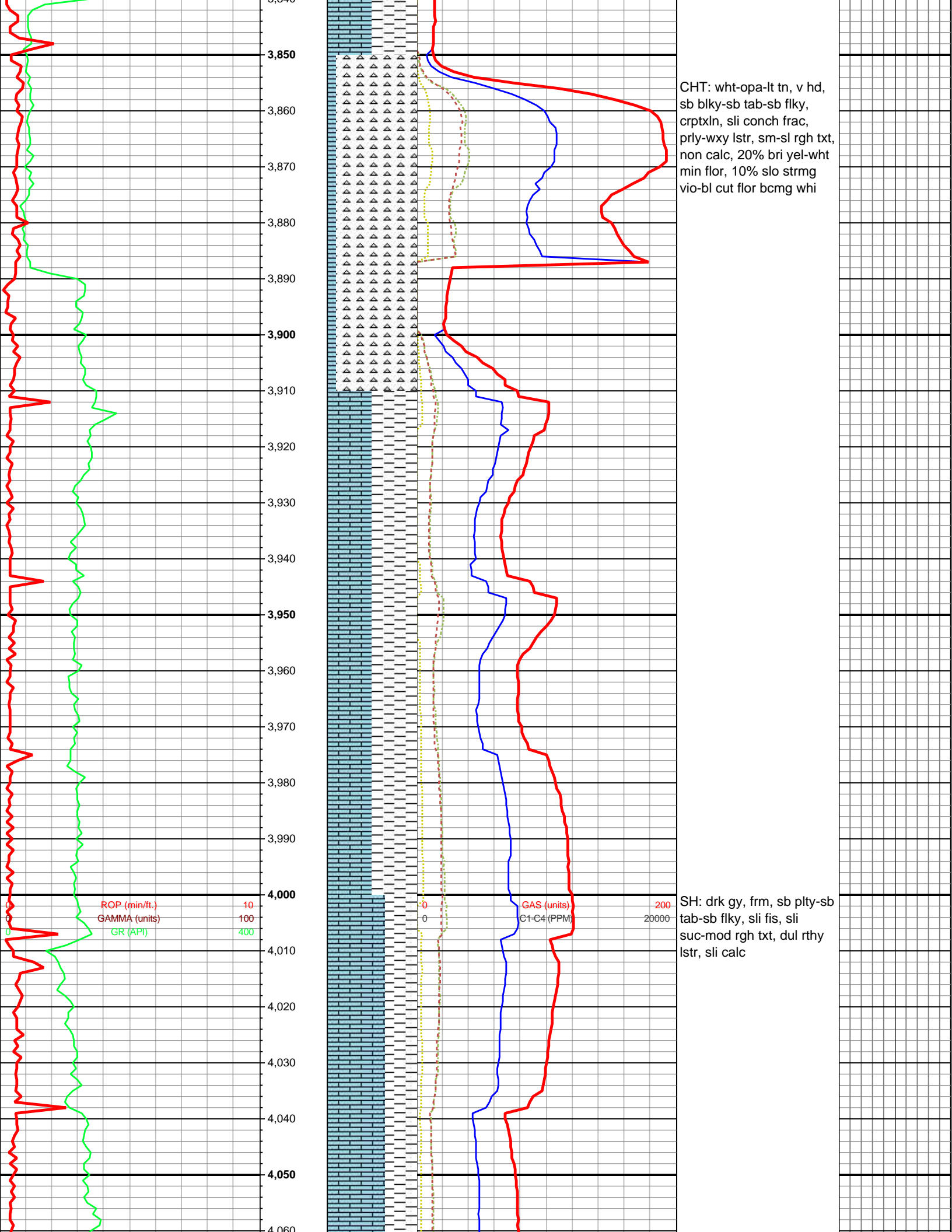
Sorting

- MODERATE
- POOR
- WELL



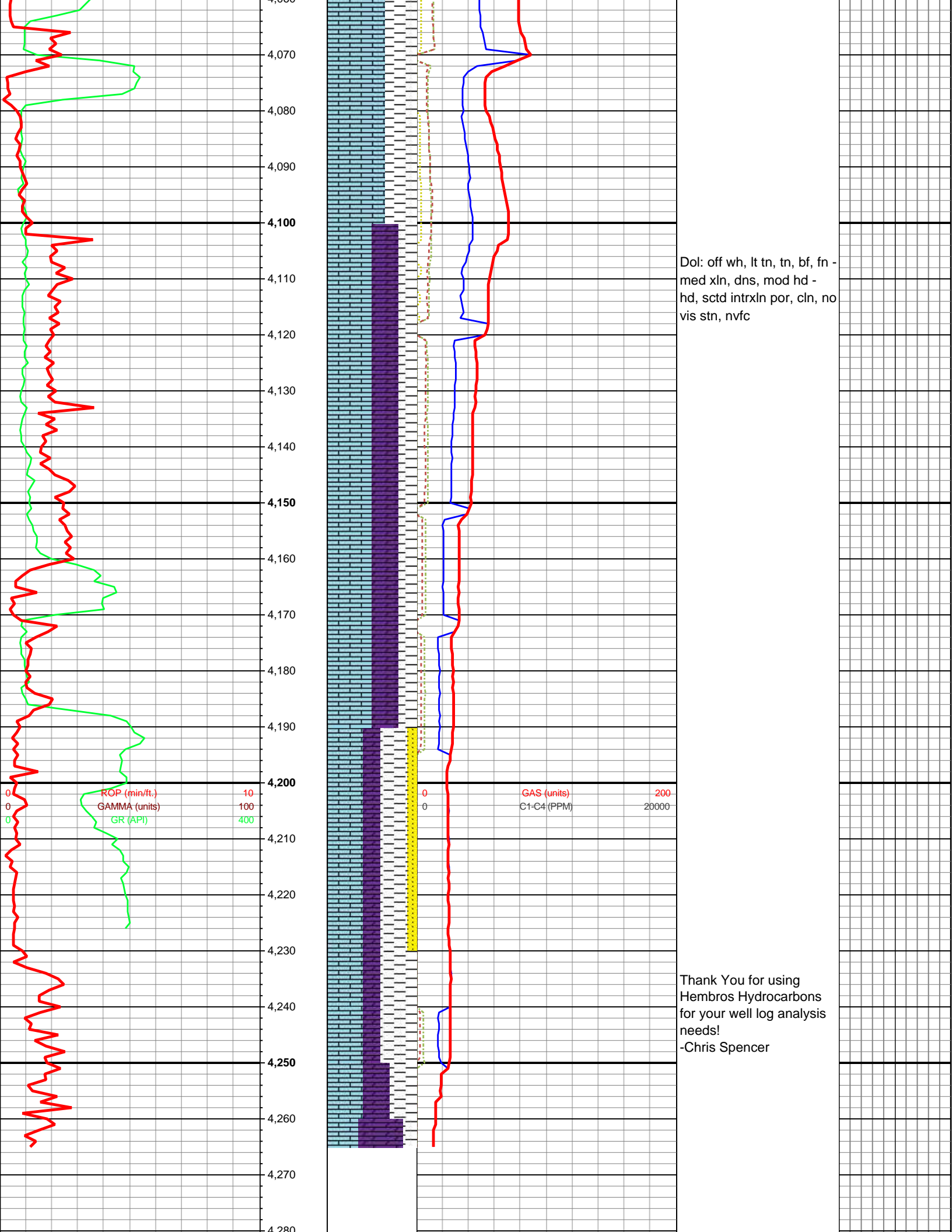






CHT: wht-opa-lt tn, v hd,
 sb blk-y-sb tab-sb flky,
 crptxln, sli conch frac,
 prly-wxy lstr, sm-sl rgh txt,
 non calc, 20% bri yel-wht
 min flor, 10% slo strmg
 vio-bl cut flor bcmg whi

SH: drk gy, frm, sb plty-sb
 tab-sb flky, sli fis, sli
 suc-mod rgh txt, dul rthy
 lstr, sli calc



Dol: off wh, lt tn, tn, bf, fn -
 med xln, dns, mod hd -
 hd, sctd intrxn por, cln, no
 vis stn, nvfc

Thank You for using
 Hembros Hydrocarbons
 for your well log analysis
 needs!
 -Chris Spencer

