

T23S, R8W, 6th P.M.

SGOMI

Well location, REFFNER 2308 #4-2HS, located as shown in Lot 3 of Section 4, T23S, R8W, 6th P.M., Reno County, Kansas.

BASIS OF ELEVATION

SPOT ELEVATION LOCATED AT THE SW CORNER OF SECTION 18, T23S, R8W, 6th P.M. TAKEN FROM THE ALDEN SE, QUADRANGLE, KANSAS, RENO COUNTY, 7.5 MINUTE QUAD (TOPOGRAPHIC MAP) PUBLISHED BY THE UNITED STATES DEPARTMENT OF THE INTERIOR, GEOLOGICAL SURVEY, SAID ELEVATION IS MARKED AS BEING 1688 FEET.

BASIS OF BEARINGS

BASIS OF BEARINGS IS A G.P.S. OBSERVATION.

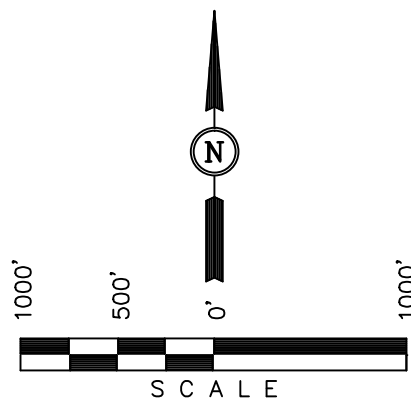
1/2" Rebar
0.5' Below Ground,
In Road
NAD 27 Kansas South
N: 522216.78
E: 2081869.88

Large Spike
0.3' Below Ground
NAD 27 Kansas South
N: 522283.84
E: 2084519.92

5/8" Rebar
0.3' Below Ground,
In Road
NAD 27 Kansas South
N: 522333.50
E: 2087162.09

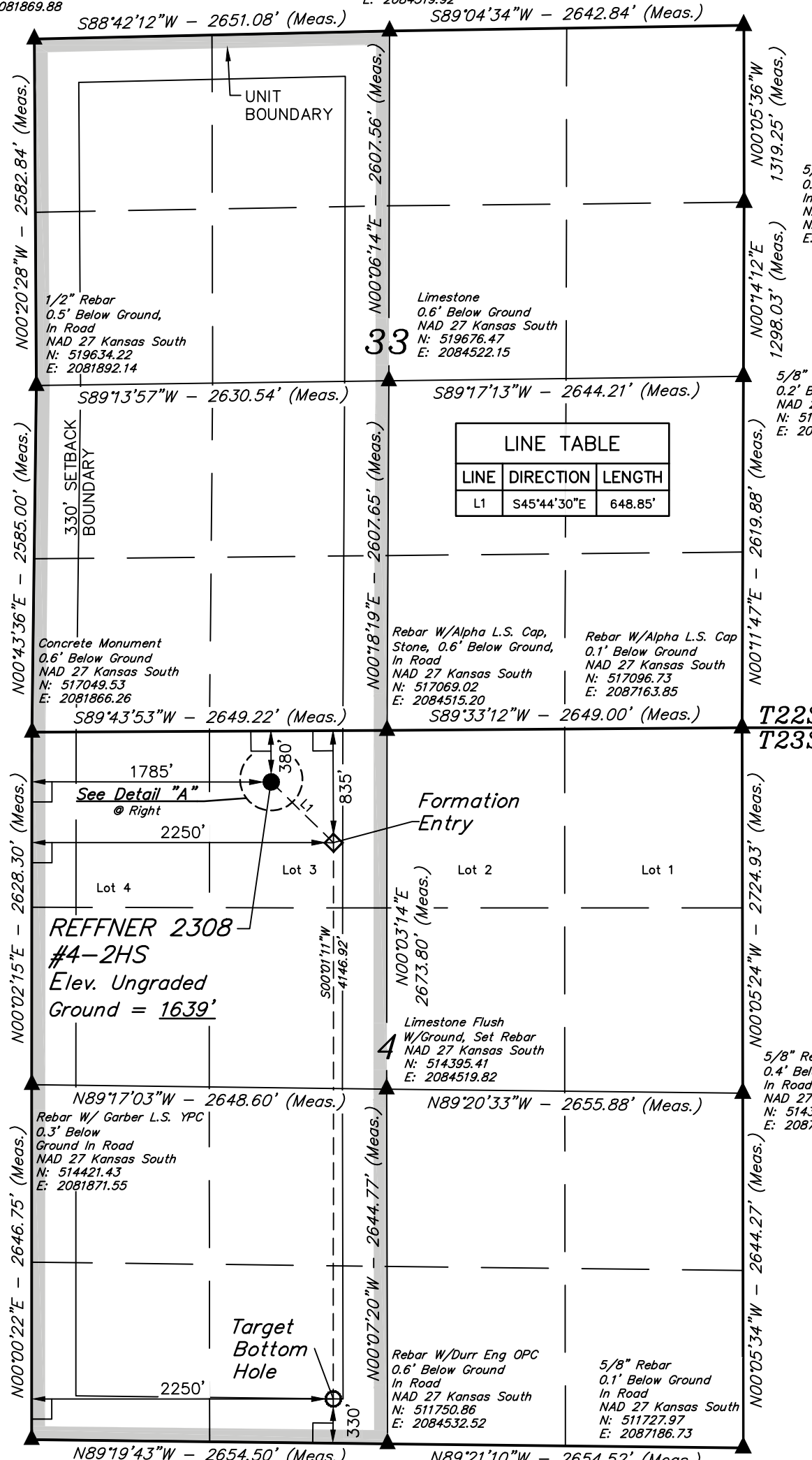
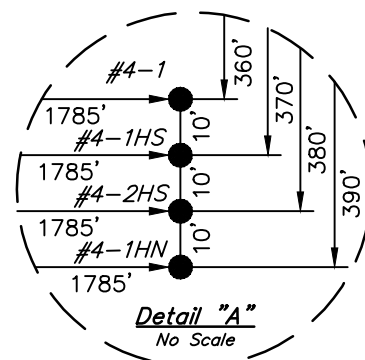
5/8" Rebar
0.5' Below Ground,
In Road
NAD 27 Kansas South
N: 521014.35
E: 2087167.76

5/8" Rebar
0.2' Below Ground
NAD 27 Kansas South
N: 519716.42
E: 2087165.85



LEGEND:

- └─┘ = 90° SYMBOL
- = PROPOSED WELL HEAD.
- ▲ = SECTION CORNERS LOCATED.



LINE TABLE		
LINE	DIRECTION	LENGTH
L1	S45°44'30"E	648.85'

REFFNER 2308
#4-2HS
Elev. Ungraded
Ground = 1639'

Formation
Entry

Target
Bottom
Hole

CERTIFICATE

THIS IS TO CERTIFY THAT THE ABOVE PLAT WAS PREPARED FROM FIELD NOTES OF ACTUAL SURVEYS MADE BY ME OR UNDER MY SUPERVISION AND THAT THE SAME ARE TRUE AND CORRECT TO THE BEST OF MY KNOWLEDGE AND BELIEF.

Justin J. ...
REGISTERED LAND SURVEYOR
REGISTRATION NO. 1451
STATE OF KANSAS

REVISED: 01-09-13
REVISED: 12-18-12

UINTAH ENGINEERING & LAND SURVEYING
85 SOUTH 200 EAST - VERNAL, UTAH 84078
(435) 789-1017

NAD 83 (#4-2HS TARGET BOTTOM HOLE) LATITUDE = 38°04'21.70" (38.072694) LONGITUDE = 98°12'29.15" (98.208097)	NAD 83 (#4-2HS FORMATION ENTRY) LATITUDE = 38°05'02.70" (38.084083) LONGITUDE = 98°12'29.11" (98.208086)	NAD 83 (#4-2HS SURFACE LOCATION) LATITUDE = 38°05'07.17" (38.085325) LONGITUDE = 98°12'34.92" (98.209700)	SCALE 1" = 1000'	DATE SURVEYED: 11-28-12	DATE DRAWN: 11-30-12
NAD 27 (#4-2HS TARGET BOTTOM HOLE) LATITUDE = 38°04'21.66" (38.072683) LONGITUDE = 98°12'27.93" (98.207758)	NAD 27 (#4-2HS FORMATION ENTRY) LATITUDE = 38°05'02.65" (38.084069) LONGITUDE = 98°12'27.88" (98.207744)	NAD 27 (#4-2HS SURFACE LOCATION) LATITUDE = 38°05'07.13" (38.085314) LONGITUDE = 98°12'33.69" (98.209358)	PARTY C.B. D.W. C.A.G.	REFERENCES G.L.O. PLAT	
STATE PLANE NAD 27 (KANSAS SOUTH) N: 512084.52 E: 2084127.37	STATE PLANE NAD 27 (KANSAS SOUTH) N: 516231.13 E: 2084117.74	STATE PLANE NAD 27 (KANSAS SOUTH) N: 516682.68 E: 2083651.86	WEATHER COOL	FILE SGOMI	