



GEOLOGIST'S REPORT  
DRILL TIME &  
SAMPLE LOG

COMPANY **COBALT ENERGY, LLC**  
LEASE **Terry 'A' #2-1**  
FIELD **Struss West**

ELEVATIONS  
KB **2413'**  
DF \_\_\_\_\_

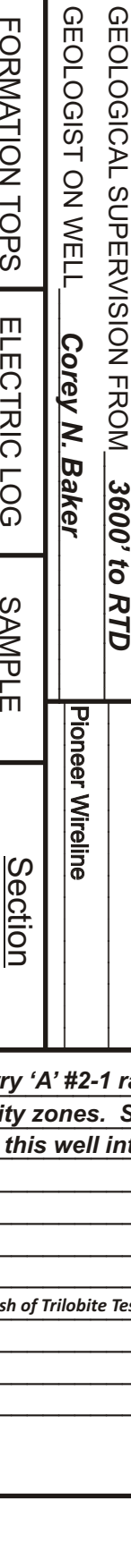
LOCATION **2302' FNL & 986' FWL**  
SEC **1** TWP **11S** RGE **25W**  
COUNTY **Trego** STATE **KS**  
CONTRACTOR **Martin Drilling - Rig #16**  
SPUD **11/12/12** COMP **11/18/12**  
RTD **4050'** TYPE LTD **4050'**  
MUD UP **3310'** TYPE MUD **Chemical**

CASING  
Conductor **NA**  
Surface **8 5/8" @ 219'**  
Production **5 7/8" @ 2142'**

SAMPLES SAVED FROM **3600'** TO **RTD**  
DRILLING TIME KEPT FROM **3600'** TO **RTD**  
SAMPLES EXAMINED FROM **3600'** TO **RTD**

Geological Supervision FROM **3600'** TO **RTD**  
GEOLOGIST ON WELL **Corey N. Baker**

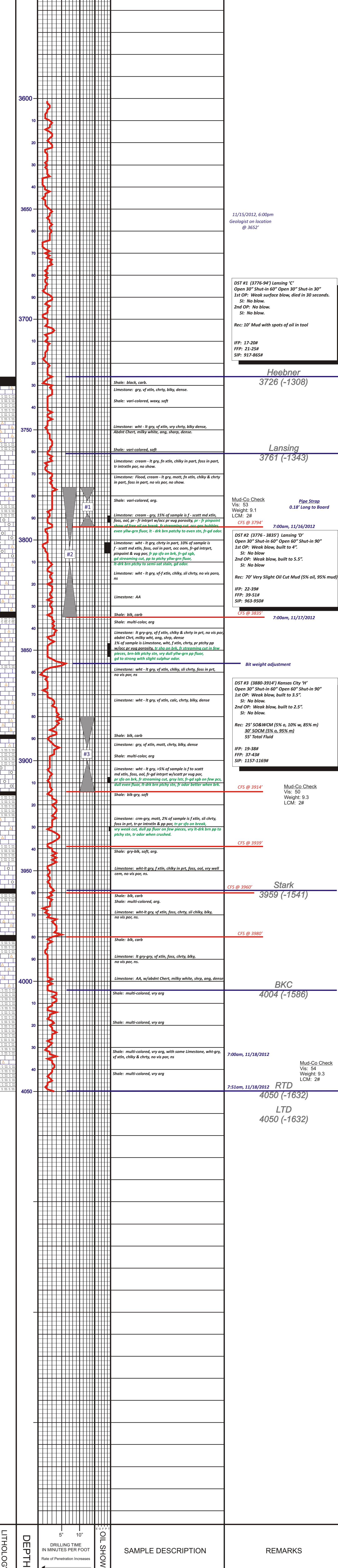
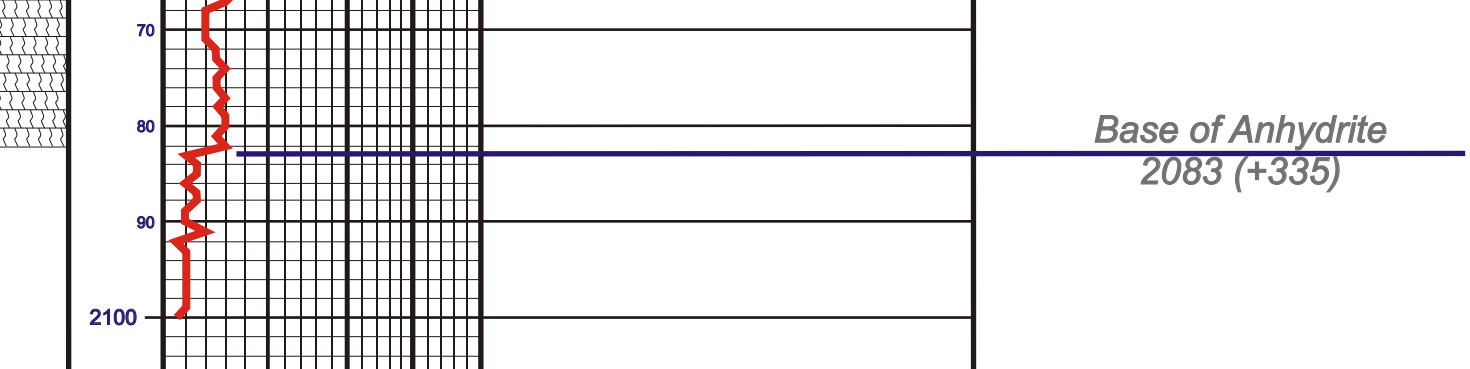
FORMATION TOPS  
Anhydrite **2040 (-378)** SAMPLE **2043 (+375)**  
Base of Anhydrite **2078 (-340)** SAMPLE **2083 (+335)**  
Heebner **3725 (-1307)** SAMPLE **3726 (-1308)**  
Lansing **3760 (-1342)** SAMPLE **3761 (-1343)**  
Stark **3958 (-1540)** SAMPLE **3959 (-1541)**  
BKC **4004 (-1586)** SAMPLE **4004 (-1586)**  
RTD **4050 (-1632)** SAMPLE **4050 (-1632)**



REMARKS **The Terry 'A' #2-1 ran slightly lower than the offset but never developed commercial reservoir in the Lansing/ Kansas City zones. Shows were tested with negative results, and after reviewing all information it was decided to convert this well into a saltwater disposal for the Terry 'A' #1-1.**

Drill Stem testing done by Dustin Rash of Trilobite Testing.  
Respectfully Submitted,  
**Corey Baker**  
Petroleum Geologist  
API #15-195-22821-00-00

LEGEND



Company **COBALT ENERGY, LLC** Elevation **2413' KB**  
Lease **Terry 'A' #2-1**  
Location **2302' FNL & 986' FWL** SEC. **1** TWP **11S** RGE **25W**  
County **Trego** State **Kansas**