



Woolsey Operating Company, LLC
Scale 1:240 (5"=100') Imperial
Measured Depth Log

Well Name: Spicer #1 H
Location: Section 11 - Township 34 South - Range 11 West
License Number: 15-007-23934-01-00 Region: Barber County, KS
Spud Date: September 12, 2012 Drilling Completed:
Surface Coordinates: Approx. NW NE NW NW
175' FNL, 773' FWL
Bottom Hole Coordinates:
Ground Elevation (ft): 1401' K.B. Elevation (ft): 1417'
Logged Interval (ft): To: Total Depth (ft):
Formation: Kansas City Group ----> Mississippian
Type of Drilling Fluid: Chemical Mud
Printed by MUD.LOG from WellSight Systems 1-800-447-1534 www.WellSight.com

OPERATOR

Company: Woolsey Operating Company, LLC
Address: 125 N. Market, Suite 1000
Wichita, KS 67202

GEOLOGIST

Name: Billy G. Klaver
Company: Woolsey Operating Co. LLC
Address: 125 N. Market, Wichita Kansas, 67202

Comments

Set 20" X 53#/ft conductor to 40' KB with 4 yards of grout. Ran 11 joints of 13 3/8" X 54.5#/ft new surface casing to 324' KB (tally 324') with 300 sx Class A, 2% gel, 3% cc. Cement did circulate, plug down 8:30 am on September 11, 2012.

Bit Record:

- 1) 17 1/2" HTC J2 RT to 324'
- 2) 12 1/2" HTC J-11-4 RT to 707'
- 3) 8 3/4" PLT 616 DTM to 4369'
- 4) 8 3/4" Reed RA 23APDH to







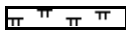

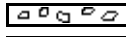












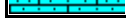

Drilling Info

Gas Detector: Woolsey Operating Co. Gas Trailer #2
Drilling Fluid Program: Mud-Co. Brad Bortz, Engineer
Calmena Directional Drillers: Heath Foster, Mark Sanders
MWD Hands: Shane Lewis, Peter Lancaster

Crews

Toolpushers: Mitch Sovia, Relief: Sammy Fry
Drillers: (12 hour tours) Johnnie Stone, Terry Stark, David Herring, Jeffery Meyers. And a host of assorted Okie roughnecks.

ROCK TYPES

 Anhy	 Congl	 Lmst	 Black sh
 Bent	 Sdy dolo	 Mrlst	 Gry sh
 Brec	 Shy dolo	 Salt	 Shale
 Cht	 Dol	 Shale	 Shyltst
 Clyst	 Gyp	 Sltst	 Sltsh
 Coal	 Sdy lmst	 Ss	

ACCESSORIES

MINERAL

- Anhy
- Arg
- Bent
- Bit
- Brecfrag
- Calc
- Carb
- Chtdk
- Chtlt
- Dol
- Ferrpel
- Ferr
- Glau
- Gyp
- Marl
- Nodule
- Phos
- Pyr
- Salt
- Sandy
- Silt

- Chlorite
- Dol
- Sand
- Slty

FOSSIL

- Algae
- Amph
- Belm
- Bioclst
- Brach
- Bryozoa
- Cephal
- Coral
- Crin
- Echin
- Fish
- Foram
- Fossil
- Gastro
- Ostra

- Pelec
- Pellet
- Pisolite
- Plant
- Strom
- Fuss
- Oomoldic

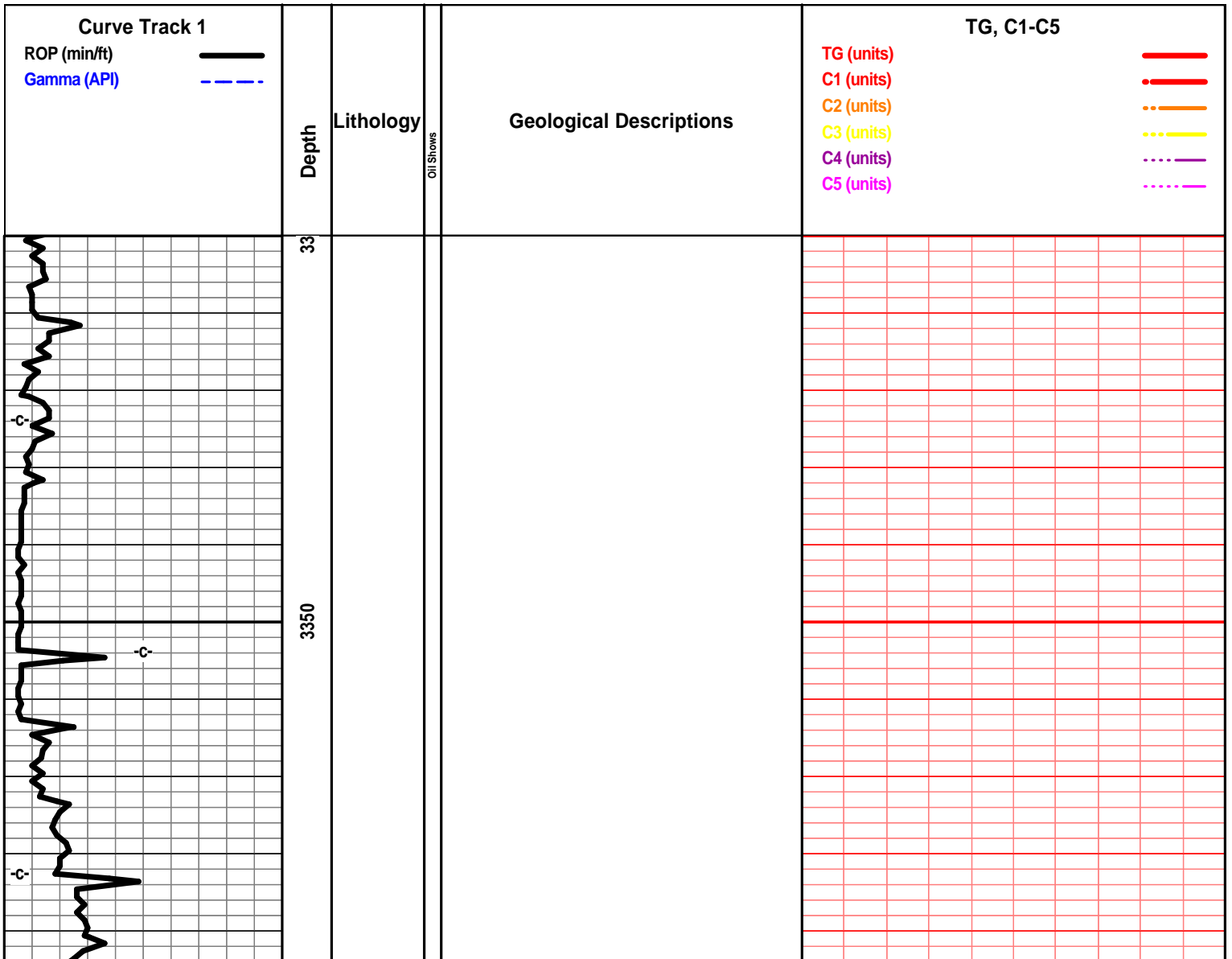
STRINGER

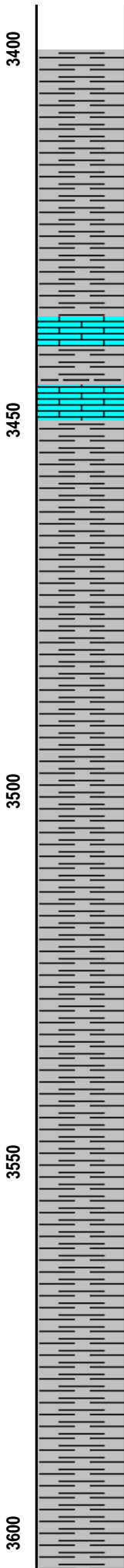
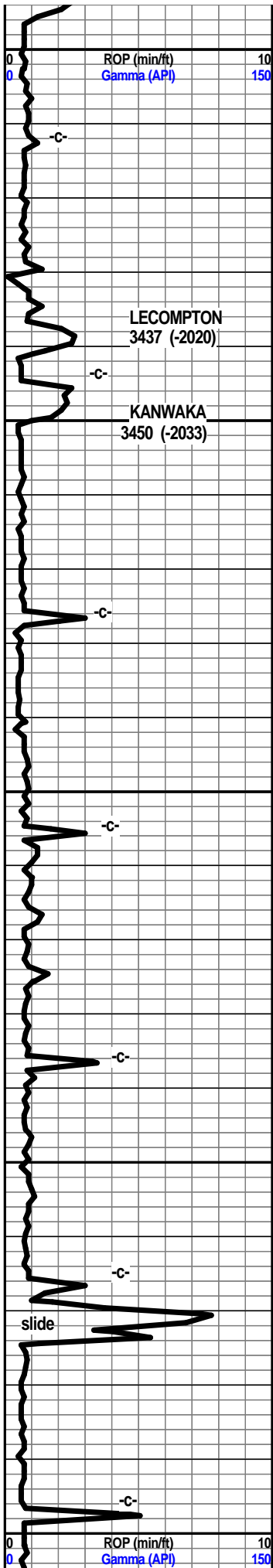
- Anhy
- Arg
- Bent
- Coal
- Dol
- Gyp
- Ls
- Mrst
- Slststrg
- Ssstrg
- Carbsh
- Clystn
- Dol

- Grysh
- Gryslt
- Lms
- Sandylms
- Sh
- Slststn

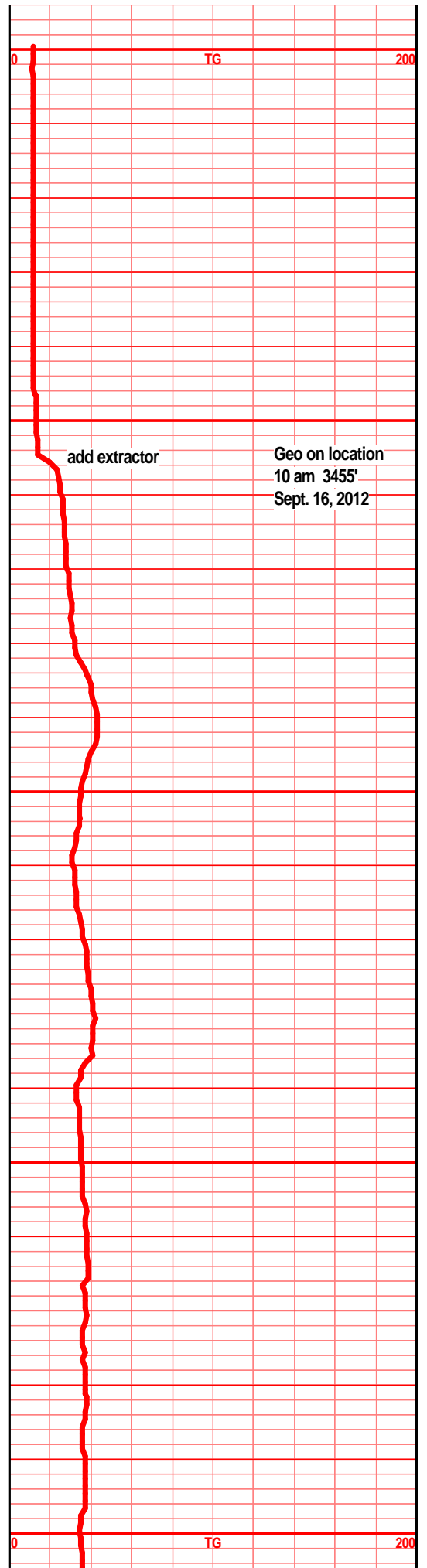
TEXTURE

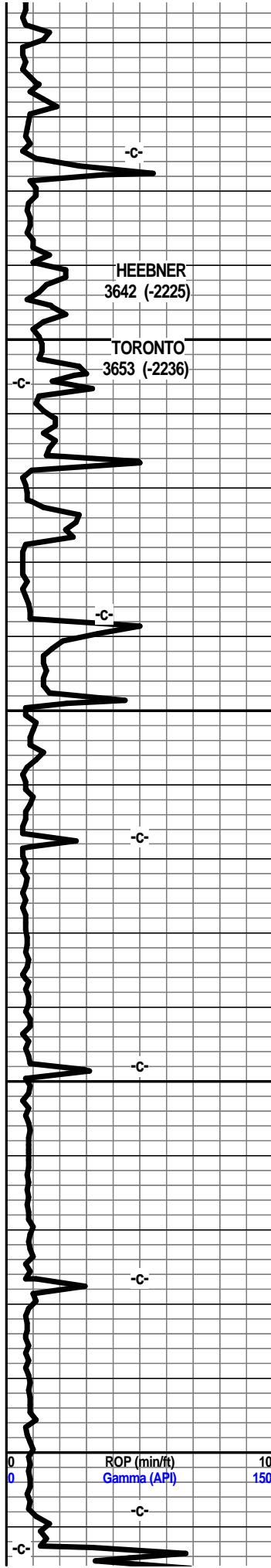
- Boundst
- Chalky
- Cryxln
- Earthy
- Finexln
- Grainst
- Lithogr
- Microxln
- Mudst
- Packst
- Wackest





shl gry med drk gry silty soft ratty in prt

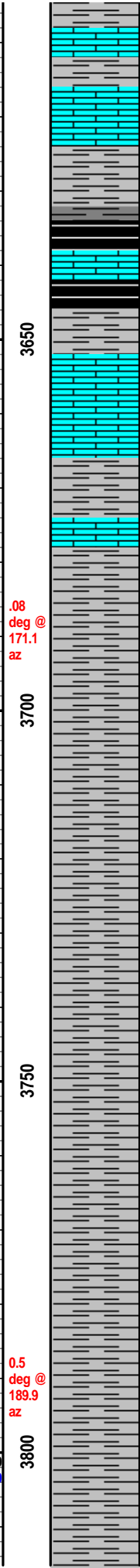




HEEBNER
3642 (-2225)

TORONTO
3653 (-2236)

ROP (min/ft)
Gamma (API)



.08
deg @
171.1
az

0.5
deg @
189.9
az

shl gry drk gry silty soft gritty, lst tan gry brn f sli
med xln blk ang hrd dns calc fill tr micro foss

shl drk gry, gry blk carb in prt, lst tan brn blk
ang hrd dns mirco foss frags, calc xln fill

lst wht off wht tan f xln gran soft chky tr micro
foss, tr calc xln fill,

shl gry med gry silty soft spls wsh med gry, tr
sndy gritty, snd grn inclu

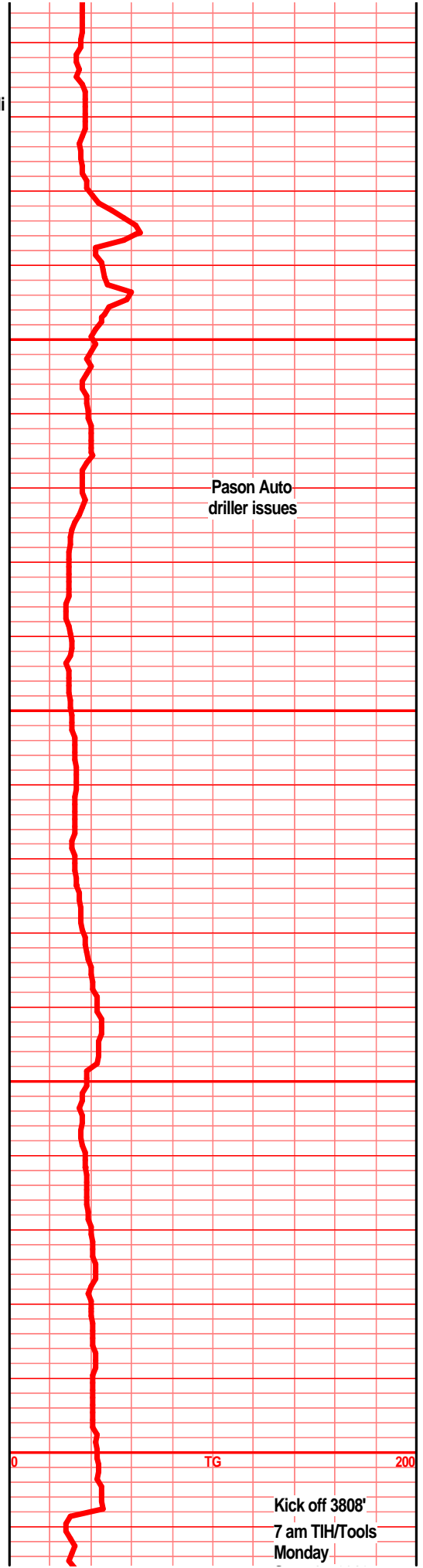
shl gry geen med gry silty soft, sndy gritty

shl dry gry/green silty sndy gritty. tr calc

shl gry drk gry green silty gritty

shl gry drk gry green silty sndy gritty

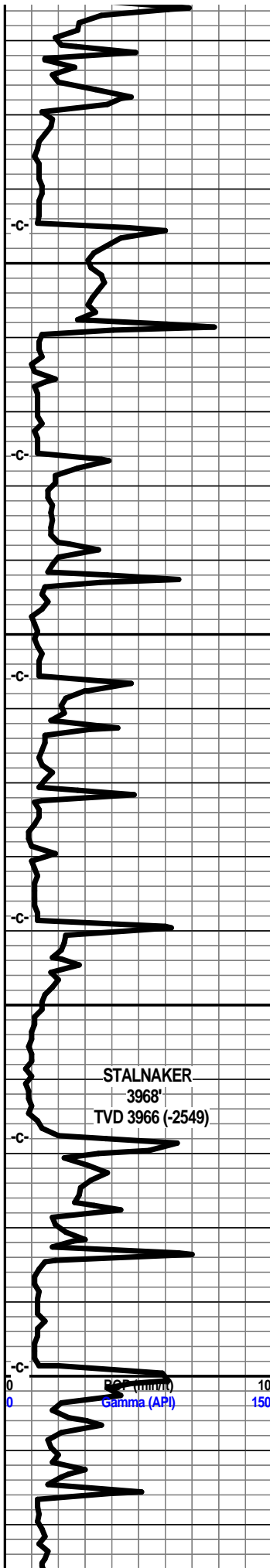
shl gry med gry silty gritty soft gran , spls wsh
drk gry



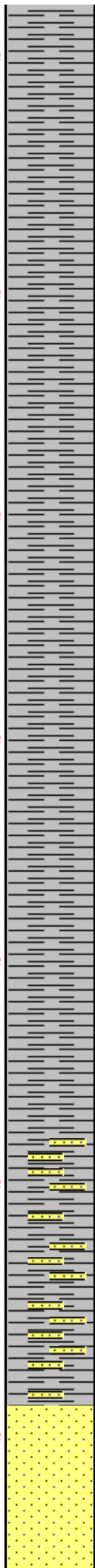
Pason Auto
driller issues

TG

Kick off 3808'
7 am TIH/Tools
Monday



1.4 deg @ 325.4 az
 3.4 deg @ 339.0 az
 5.7 deg @ 350.1 az
 7.9 deg @ 354.6 az
 10.1 deg @ 354.8 az
 12.0 deg @ 355 az
 14.4 deg @ 354.8 az



shl gry drk med drk gry silty gritty, tr sndy, snd gry inclu

shl gry med drk gry silty soft gritty tr sndy

shl gry med drk gry silty soft gritty

shl gry drk med drk gry soft silty gritty tr sndy

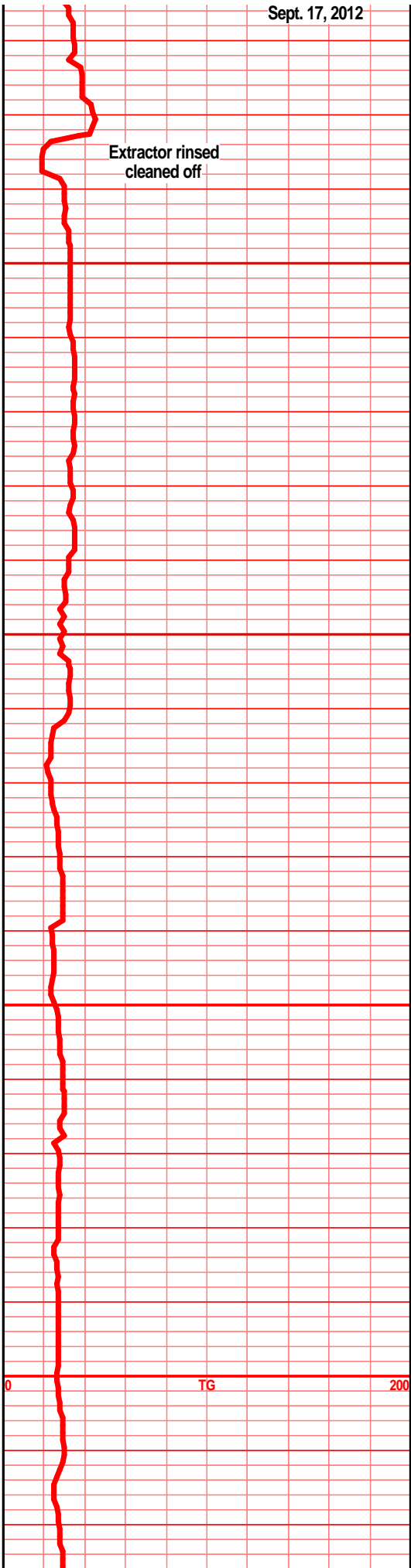
shl gry med/drk gry soft silty tr gritty, some ratty

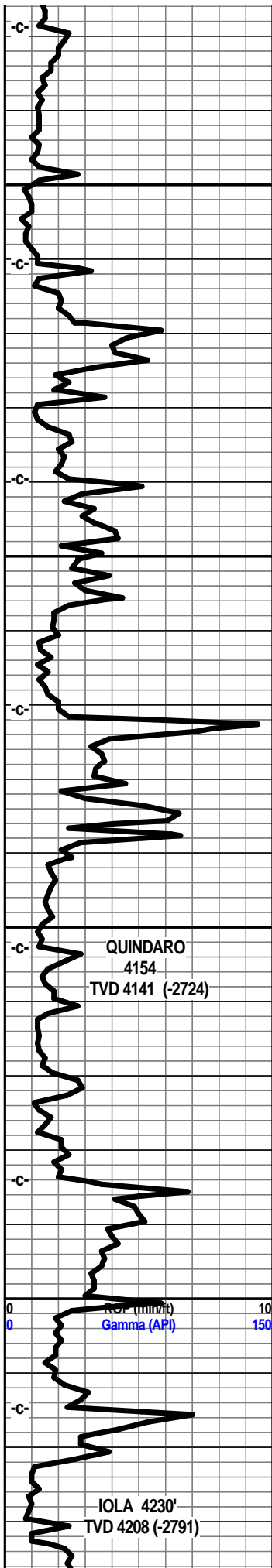
shl gry med drk gry soft gran tr gritty, sndy text, snd grn inclu in prt

shl gry drk gry silty gritty soft wsh drk gry

shl gry lt med gry silty, gritty, gran, tr sndy, carb flecks in prt, sst lt gry gry f vf grnd, sub ang grns, well srted, sub fria to tite, mic, calc fill/cem, arg, tr blk carb fill

shl gry lt gry sndy gritty, sst lt gry tr gry green f vf grnd sub ang, well srted, sub fria to tite, arg, tr mic, tr blk carb fill, calc cem, calc fill





16.9 deg @ 356.1 az

4050

19.7 deg @ 357.1 az

22.2 deg @ 357.8 az

24.7 deg @ 357.3 az

4150

27.2 deg @ 357.1 az

30.0 deg @ 357.5 az

4200

33.0 deg @ 358.2 az

QUINDARO
4154
TVD 4141 (-2724)

IOLA 4230'
TVD 4208 (-2791)



sst off wht lt gry, gry, f vf grnd, sub ang, well/prly srted, sub fria to tite, arg, tr mic, calc fill/cem, clay fill tr blk carb fill

sst off wht lt gry f vf grnd, sub ang grns, sub fria to tite, fair to prly srted, arg, clay fill calc cem/fill, tr mic,

shl gry med drk gry silty sndy gran calc in prt, abun sst aa in spl

shl drk gry silty hard, calc, lst gry brn off wht mott, f vfn xln gran blk arg hrd arg, poor spl, all hole sweep material

lst drk gry lt gry tr drk tan mott, f vf xln, dns hrd blk arg, silty, clay clasts, shl gry med gry calc

shl gry med gry silty gritty tr sndy, lst gry drk gry f vf xln dns hrd blk arg silty, calc xln casts,

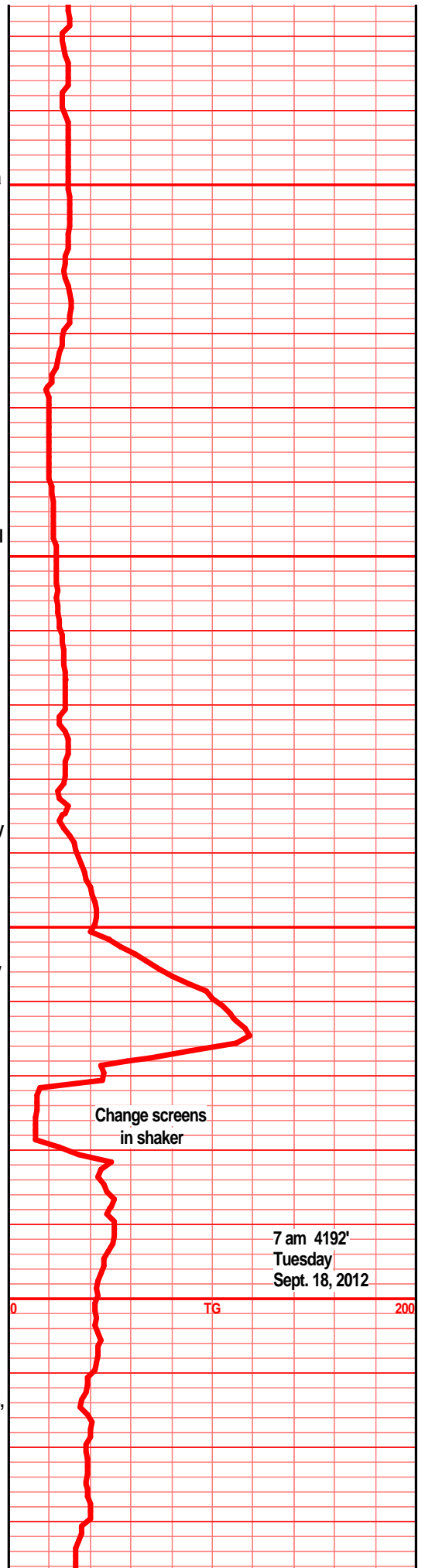
shl gry med/drk gry silty gritty, tr calc fill, tr sndy text

shl gry drk gry, gry blk, carb text, blk arg flky carb pcs, filmy cond, gas bubs

lst off wht lt gry tan f xln blk flky ang pcs, sub chlky foss frags, calc xln fill,

lst crm tan off wht tr lt gry f xln blk ang flky pcs, sub chlky foss frags, micro foss frags, tr foss ool, calc xln fill

lst off wht tan lt gry f xln gran sub chlky foss



Change screens in shaker

7 am 4192'
Tuesday
Sept. 18, 2012

TG

lst off wht tan lt gry f xln gran sub chiky foss
frag micro foss frags, calc xln fill, tr foss ool, shl
gry med gry calc silty

lst wht off wht lt gry f xln blk ang gran flky pcs,
sub chiky foss frags, micro foss frags, calc xln
fill arg in prt

lst crm tan off wht f xln gran blk ang sub chiky,
foss frags, micro foss, foss ool, pelletal, chrt lt
gry shrp frsh opaq

lst wht off wht tan f xln gran blk ang sub chiky
foss frags, micro foss, foss ool, calc xln fill, chrt
lt gry shrp frsh opaq

lst off wht lt gry f xln blk ang sub chiky, foss
frags, micro foss, chrt off wht lt gry shrp frsh
opaq transl

lst crm off wht lt gry f xln gran tr soft, sub chiky,
calc xln fill foss frags, tr micro foss, tr chrt lt gry
shrp frsh opaq

lst crm tan lt gry f xln blk ang gran soft in prt,
sub chiky foss frags, tr foss ool, chrt wht lt gry
shrp frsh opaq transl

lst crm tan off wht f xln sub chiky gran, foss
frags, tr foss ool, calc xln fill, chrt wht lt gry shrp
frsh opaq

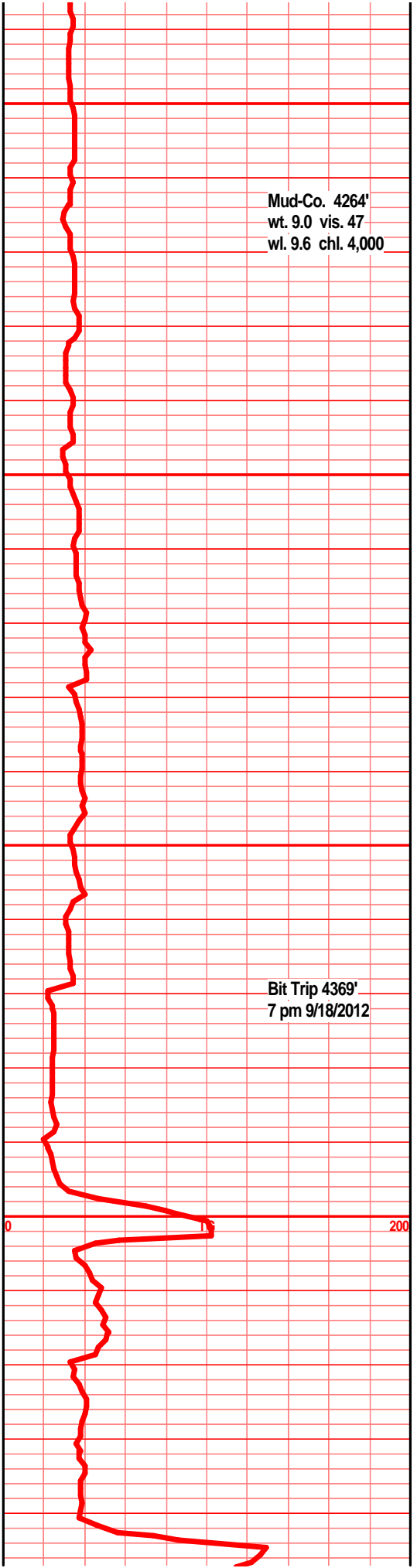
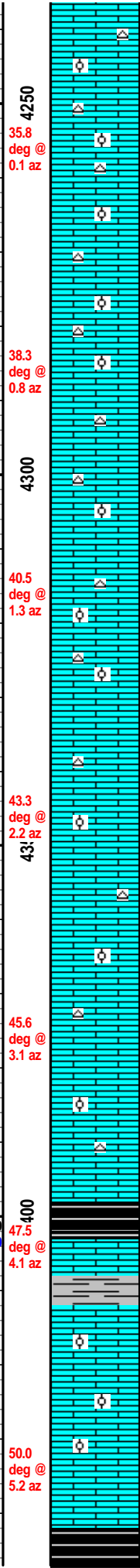
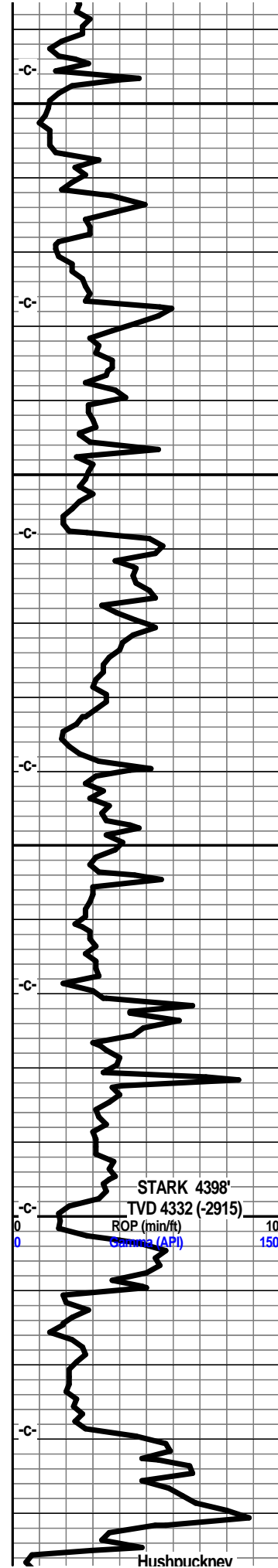
lst off wht lt gry f xln blk ang pcs, sub chiky,
gran micro foss frags, calc xln fill, tr chrt lt gry
shrp frsh

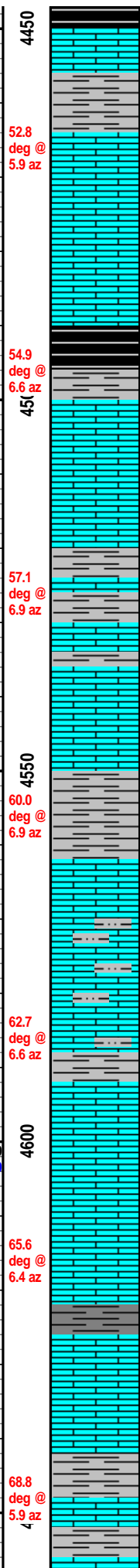
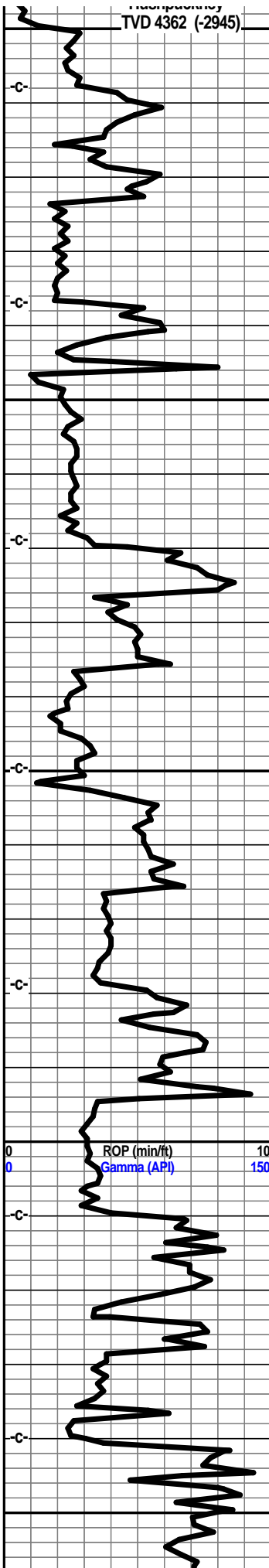
much blk wxy grsy carb shl in 4420' spl, shl gry
calc, lst tan off wht lt gry f xln gran sub chiky
micro foss, arg,

lst crm tan lt gry f xln blk ang hrd dns sub chiky
micro foss frags, chrt lt gry off wht shrp frsh
opaq

Mud-Co. 4264'
wt. 9.0 vis. 47
wl. 9.6 chl. 4,000

Bit Trip 4369'
7 pm 9/18/2012





flood grsy wxy blk carb shl, 1st off wht lt gry f xln gran soft sub chlky foss frags, foss tr ool, chrt wht lt gry shrp frsh opa

52.8 deg @ 5.9 az

1st crm tan off wht tr lt gry f xln gran blk ang pcs, foss frags, sub chlky, calc xln fill, chrt wht lt gry shrp frsh foss opa

54.9 deg @ 6.6 az

much blk carb shl, shl gry med gry silty gritty calc fill, tr foss fill, 1st tan gry f xln dns hrd blk gran vry arg silty spls wsh gry

57.1 deg @ 6.9 az

shl gry silty gritty calc fill, 1st tan lt gry f vf xln dns hrd blk ang arg silty, foss frags, tr chrt tan gry brn shrp frsh

1st crm off wht mstly lt gry f xln gran soft sub chlky arg, silty gritty in prt, shl gry lt gry silty calc

60.0 deg @ 6.9 az

shl gry green, blue green, silty gritty, sndy in prt, calc in prt, 1st tan gry brn f vf xln dns hrd blk ang arg silty

62.7 deg @ 6.6 az

shl gry green, tan gry blue green silty gritty tr sndy, calc in prt, 1st tan lt gry brn f vf xln dns hrd blk ang arg silty

1st crm tan buff f xln blk ang hrd tr sub chlky, calc xln fill micro foss frags, chrt wht tan opa shrp frsh

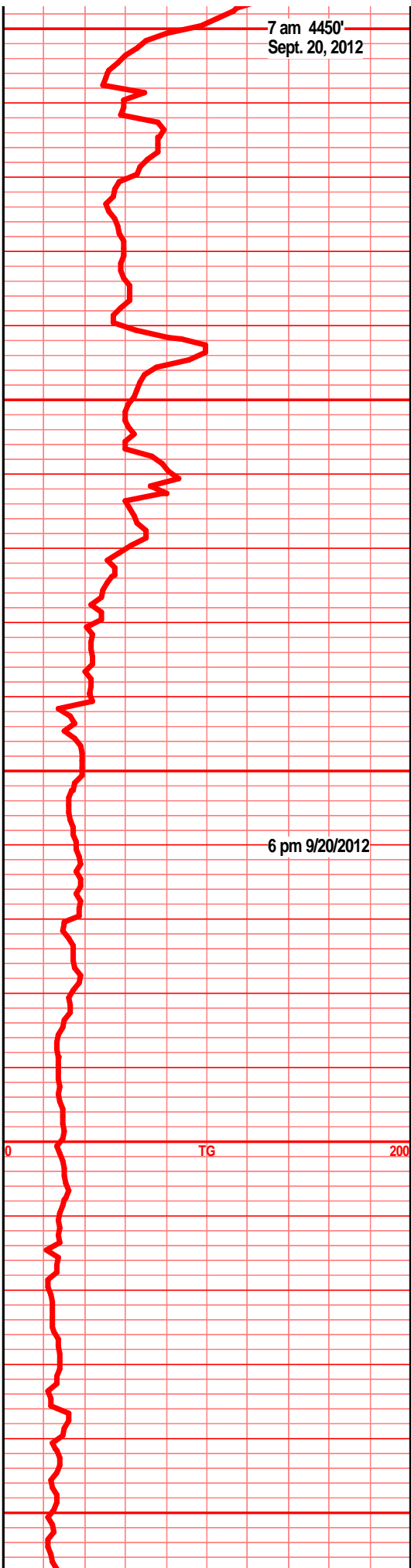
65.6 deg @ 6.4 az

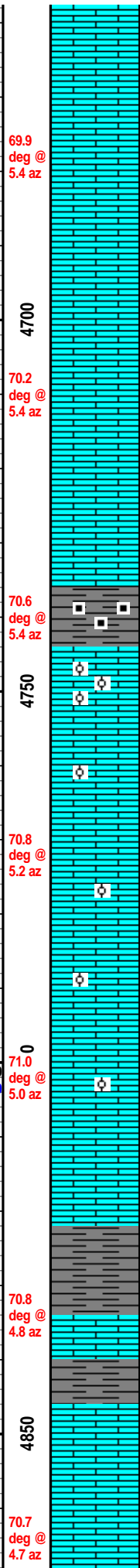
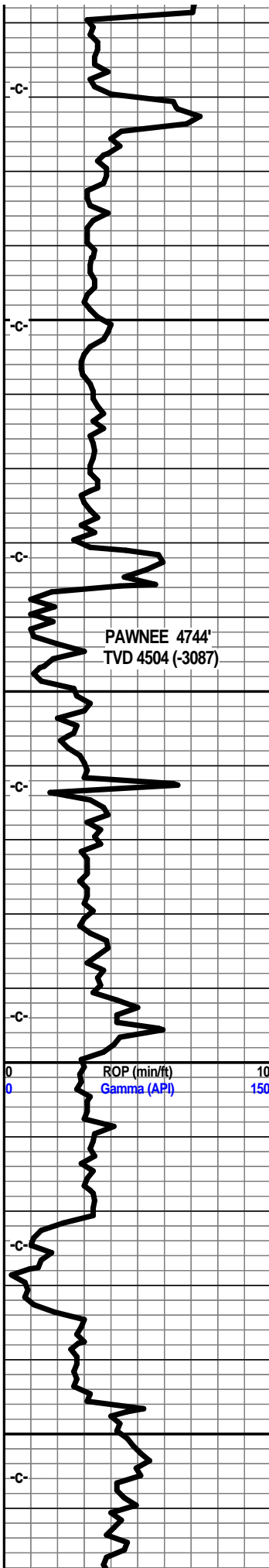
1st off wht crm buff f vf xln blk ang dns sub chlky micro foss frags, calc xln fill

shl gry med gry calc, 1st crm tan buff f xln blk ang, sub chlky micro foss frags, tr chrt wht shrp frsh opa

68.8 deg @ 5.9 az

shl gry lt gry silty soft calc, 1st tan lt gry t buff f xln blk ang hrd dns, sub chlky tr micro foss frags, micro xln fill





lst crm buff tan f micro xln blkly ang pcs, sub chlky micro foss frags, calc xln fill

lst tan off wht lt gry f vf xln dn shrd blkly ang pcs, sub chlky calc xln fill

lst off wht lt gry buff f vf xln blkly ang hrd dns sub chlky in prt, micro foss frags,

lst off wht tan lt gry f vf lxn dns hrd blkly, semi chlky, tr micro foss frags,

much gry drk gry/blk shl, tr blk grsy, wxy semi carb shl, lst tan off wht buff f vf xln blkly ang hrd dns, sub chlky, calc xln fill, foss frags/ool, gas bubs, bright UV, nodor, nsfo, pp por, mstly tite

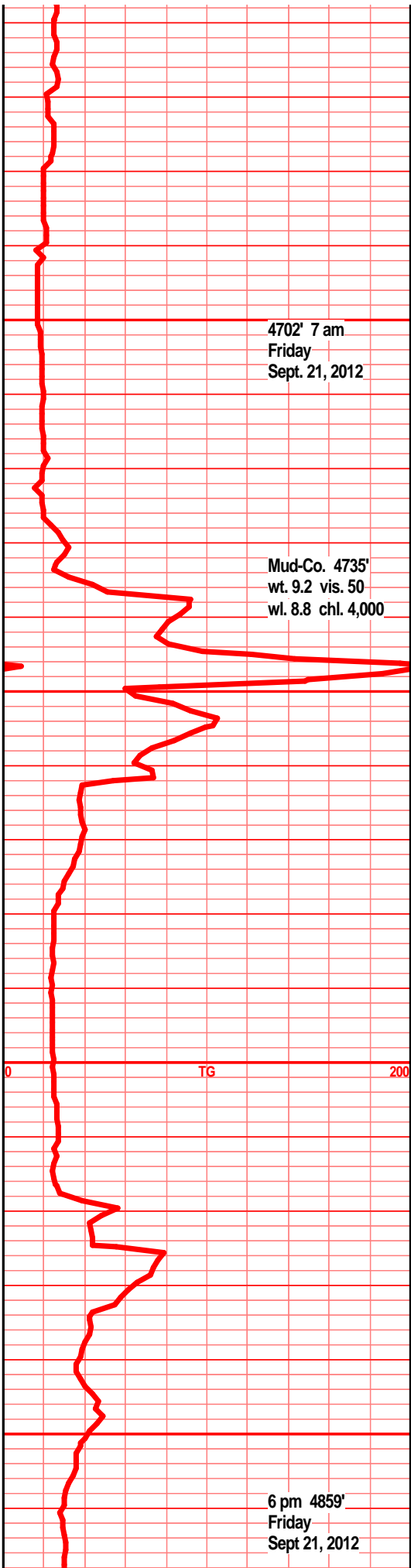
lst crm buff tan off wht f vf xln blkly ang dns hrd, sub chlky tr micro foss, micro ool, calc xln fill around ool

lst crm buff tan lt gry f vf xln dns hrd blkly ang sub chlky foss frags, micro ool, calc xln fill

lst crm buff tan lt gry f vf xln dns hrd blkly sub chlky, foss frags, foss ool, micro ool, calc xln fill

shl gry blk, med gry, blk carb, wxy, grsy, abun gas bubs, blkly ang carb pcs, filmy cond w/brkn

lst crm buff lt gry f vf xln dns hrd blkly ang, sub chlky, micro foss frags, calc xln fill,

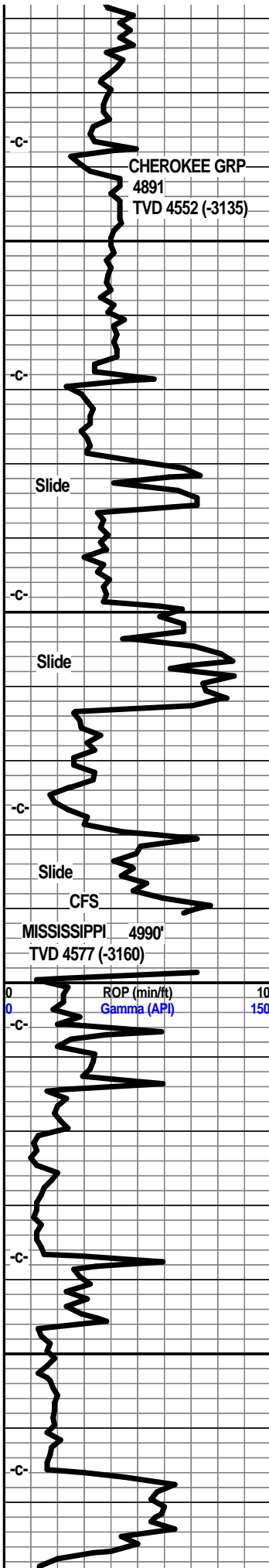


4702' 7 am
Friday
Sept. 21, 2012

Mud-Co. 4735'
wt. 9.2 vis. 50
wl. 8.8 chl. 4,000

TG

6 pm 4859'
Friday
Sept 21, 2012



71.0 deg @ 4.7 az
4900

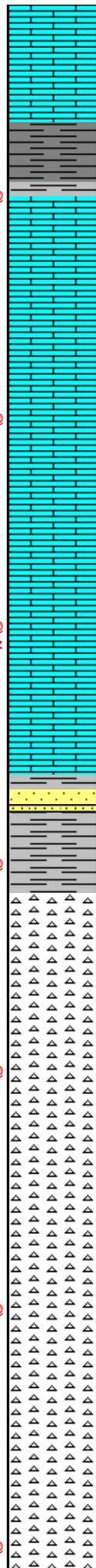
71.6 deg @ 4.5 az
0

74.0 deg @ 3.8 az
5000

77.9 deg @ 2.4 az
5050

79.3 deg @ 1.7 az
5050

81.5 deg @ 0.8 az



lst crm buff off wht tan f vf xln gran blkly ang dns hrd pcs, sub chlky, foss frags, tr foss ool, calc xln fill

shl gry drk gry blk, wxy grsy blkly ang blk carb shl pcs, tr gas bubs, filmy cond w/brkn

lst crm buff tan off wht f vf xln blkly ang hrd sub chlky micro foss frags, calc xln fill, foss ool, pelletal in prt

hole flush/poly lube/graphite

lst tan crm buff off wht, f vf xln blkly ang dns hrd, sub chlky, foss frags, calc xln fill, shl gry med gry silty gritty calc

shl gry, gry green, maroon, tr vari-color, silty gritty gran, tr ratty,

sst tan lt brn clstrs, f vf grnd, sub ang grns, w/srtd, w/cem, calc cem, sub fria, tan brn stain, drk SFO/brkn, tr gas bub

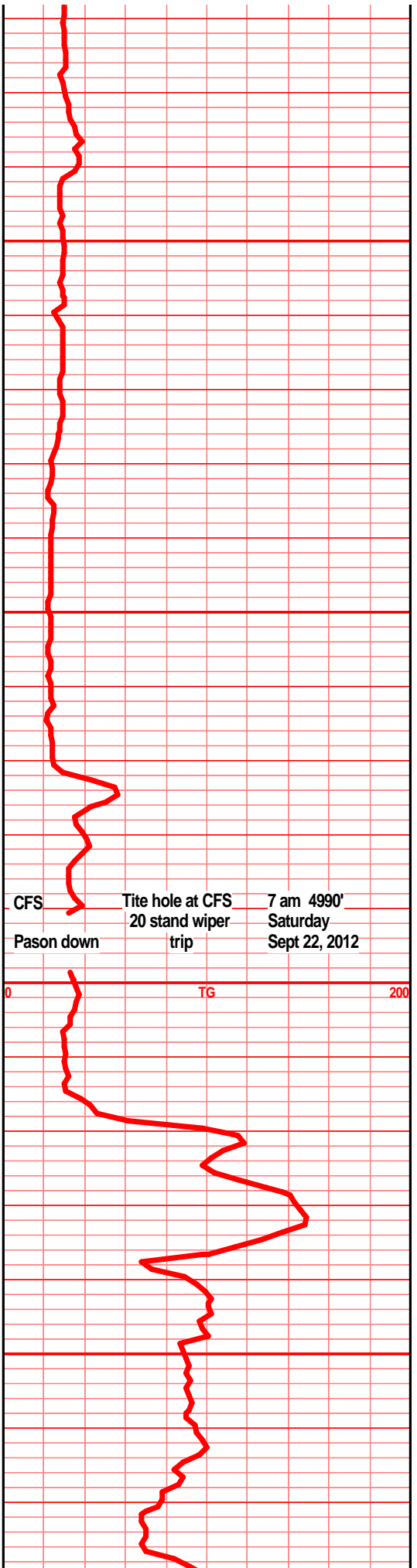
chrt (5-6 pcs) wht off wht, lt gry smokey/lt blue, shrp frsh, semi transl, opa, blkly ang shrp shards NVP, NS

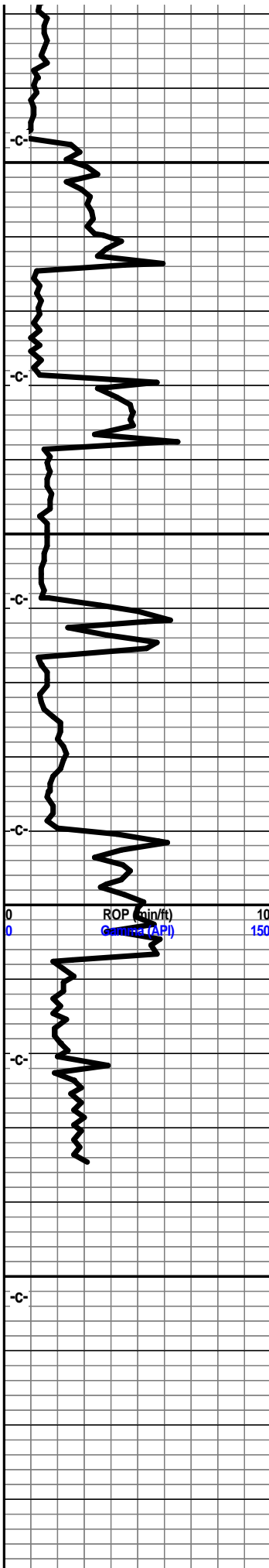
chrt wht lt gry, smokey, lt blue/gry, shrp frsh, transl, semi opa, blkly ang pcs, chrt lt gry smokey with sli sub chlky weath edge, tr pp moldic por, tr hvy blkly stain, blk SFO, gas?, nodor

chrt wht lt gry smokey lt blue gry, shrp frsh opa transl, chrt tan lt brn shrp frsh with weath gran sli trip text edge, tr spongey text, pp moldic por, even stain, lt transl SFO, gas bubs, sli odor

chrt wht lt gry smokey shrp frsh opa, blkly ang pcs, chrt tan lt brn mott shrp frsh opa, w/sli weath trip text, tr spongy text, even tan lt brn stain, transl/RBSFO, gas, odor?

chrt lt gry smokey shrp frsh opa, semi transl, foss, chrt tan lt brn, mott in prt, tan lt brn stain, sli trip text in prt, tr spongey text, pp moldic por, stain filmy SFO, gas bubs, dull UV. sli odor





5100
84.4 deg @
0.8 az

86.8 deg @
0.8 az

5150

5200

5250



a 50-50 mix: chrt off wht lt gry smokey shrp frsh opa trans, blk ang pcs, and chrt tan lt brn with sli weath edge text, pp moldic por, even tan brn stain, filmy sfo, dull UV, tr gas bubs

chrt off wht lt gry, smokey/blue shrp frsh ang blk shards, tr foss, chrt tan lt brn with sli weath trip text edges, tan lt brn stain, dull UV, RBSFO, filmy SFO. sli odor, gd pp moldic por

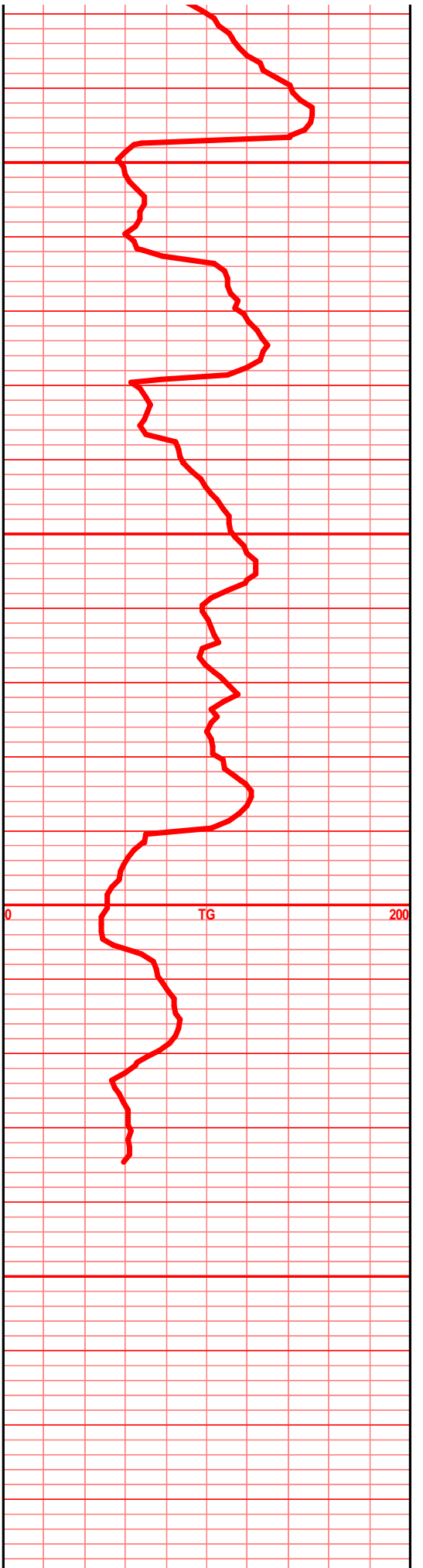
chrt off wht lt gry smokey/bluish, shrp frsh opa semi transl, blk ang shards, with tan brn sli weath edge text, tan brn stain, filmy sfo, dull UV, tr gas sli odor

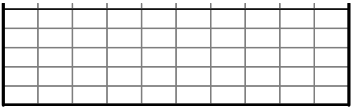
chrt off wht lt gry smokey, tr lt blue gry, shrp frsh opa trans with weath text edges, pp moldic por, tan lt brn stain, filmy SFO, SSFO, sli odor, tr gas bubs, Dull UV

chrt off wht lt gry tr lt smokey color, shrp frsh opa, transl, blk ang pcs with sli weath, weath trip text edges in prt, pp moldic por, tan lt brn stain, odor, filmy SFO, tr floating droplets, dull UV, tr gas bubs

chrt off wht lt gry smokey, shrp frsh opa semi transl, foss, with sli weath sli trip text edge, tan brn stain, pp moldic por, filmy SFO, sli odor dull UV

chrt off wht lt gry lt smokey color, shrp frsh opa, semi transl, with sli weath, sli trip text, pp moldic por, filmy SFO, dull UV, sli odor, incr frsh chrt in this sample





00

