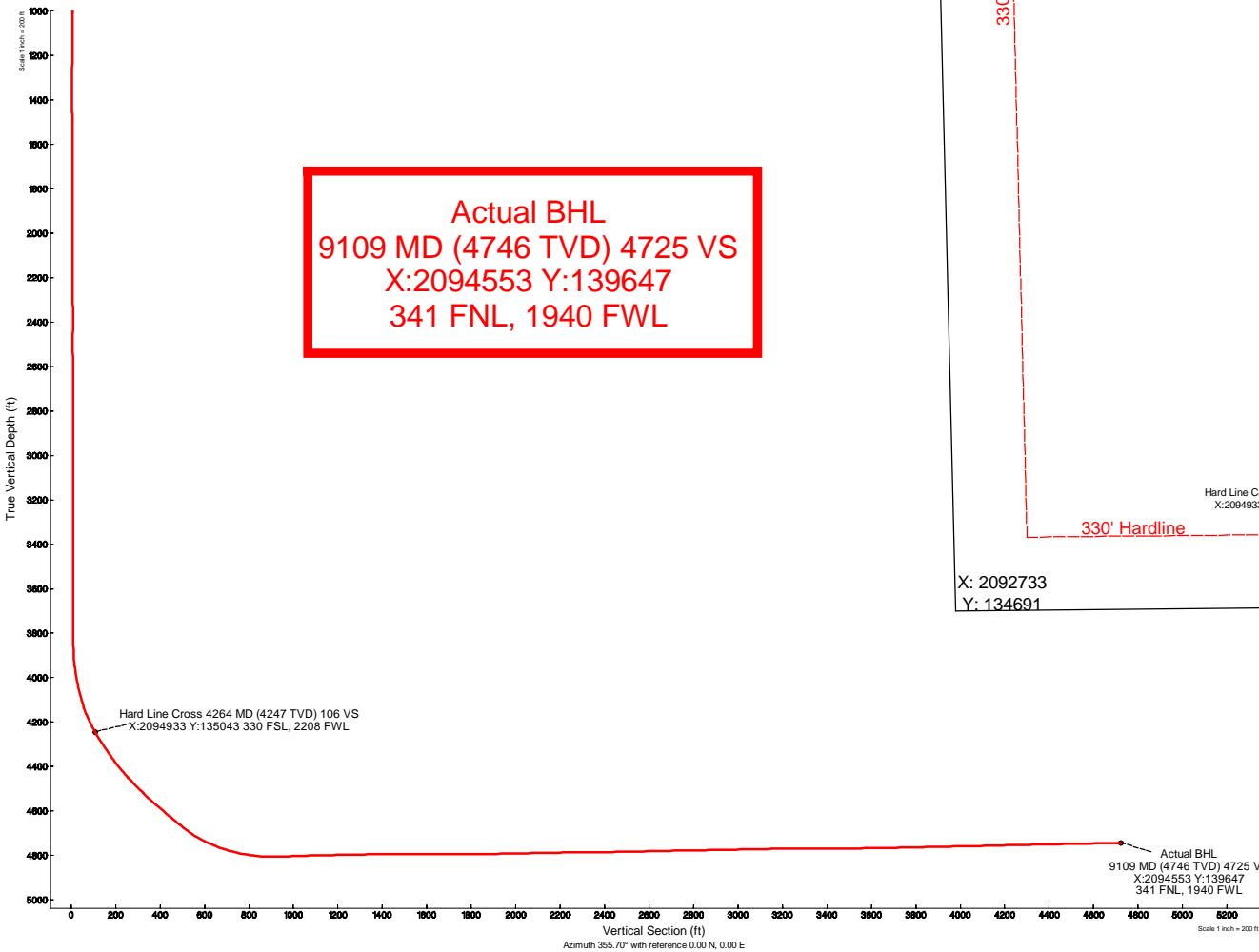
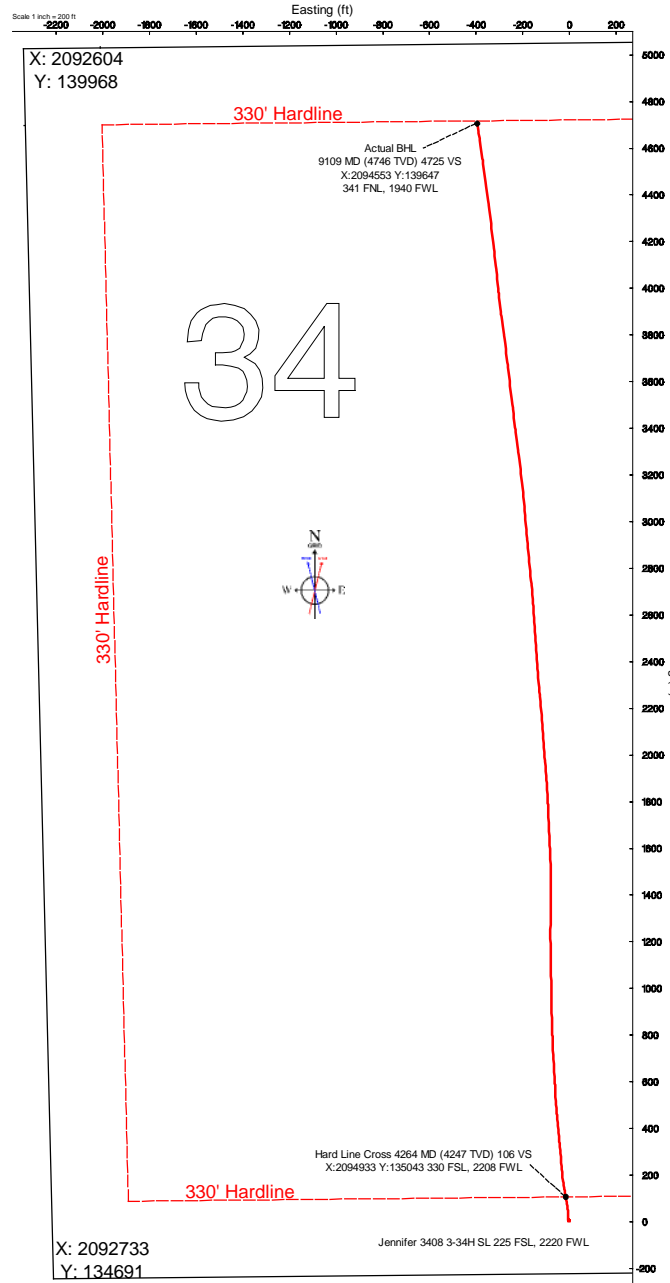


# Sandridge Energy

Jennifer 3408 3-34H (Final)  
 Jennifer 3408 3-34H SL 225 FSL, 2220 FWL  
 Harper County, Kansas (Sandridge Energy) NAD27 / Grid

Plot reference wellpath is Plan 1		Grid System: NAD27 / Lambert Kansas SP, Southern Zone (1502), US feet	
True vertical depths are referenced to Unit 310 (KB)		North Reference: Grid north	
Measured depths are referenced to Unit 310 (KB)		Scale: True distance	
Unit 310 (KB) to Mean Sea Level: 1278 feet		Depths are in feet	
Mean Sea Level to Mud line (At Slot: Jennifer 3408 3-34H SL 225 FSL, 2220 FWL): -1263 feet		Created by: broomart on 12/5/2012	
Coordinates are in feet referenced to Slot			
Location Information			
Facility Name		Grid East (US ft)	Grid North (US ft)
Jennifer 3408 3-34H Sec. 34-34S-8W		2094947.000	134938.000
Slot		Latitude	Longitude
Jennifer 3408 3-34H SL 225 FSL, 2220 FWL		37°02'12.470"N	98°10'29.075"W
Local N (ft)	Local E (ft)	Grid East (US ft)	Grid North (US ft)
0.00	0.00	2094947.000	134938.000
Unit 310 (KB) to Mud line (At Slot: Jennifer 3408 3-34H SL 225 FSL, 2220 FWL)		Latitude	Longitude
Mean Sea Level to Mud line (At Slot: Jennifer 3408 3-34H SL 225 FSL, 2220 FWL)		37°02'12.470"N	98°10'29.075"W
Unit 310 (KB) to Mean Sea Level		15ft	
		-1263ft	
		1278ft	



## REFERENCE WELLPATH IDENTIFICATION

Operator	Sandridge Energy	Slot	Jennifer 3408 3-34H SL 225 FSL, 2220 FWL
Area	Kansas	Well	Subject
Field	Harper County, Kansas (Sandridge Energy) NAD27 / Grid	Wellbore	Jennifer 3408 3-34H Actual
Facility	Jennifer 3408 3-34H Sec. 34-34S-8W		

## REPORT SETUP INFORMATION

Projection System	NAD27 / Lambert Kansas SP, Southern Zone (1502), US feet		
North Reference	Grid	Software System	WellArchitect™ 3.0.0
Convergence at slot	0.20° East	User	Burnranj
Scale	1.00005	Report Generated	12/18/2012 at 10:52:54 AM
Wellbore last revised	12-05-2012	Database/Source file	Oklahoma City

## WELLPATH LOCATION

	Local coordinates		Grid coordinates		Geographic coordinates	
	North[ft]	East[ft]	Easting[US ft]	Northing[US ft]	Latitude	Longitude
Slot Location	0.00	0.00	2094947.00	134938.00	37°02'12.470"N	98°10'29.075"W
Facility Reference Pt			<b>2094947.00</b>	<b>134938.00</b>	37°02'12.470"N	98°10'29.075"W
Field Reference Pt			2132248.82	161602.28	<b>37°06'34.560"N</b>	<b>98°02'47.460"W</b>

## WELLPATH DATUM

Calculation method	Minimum curvature	Unit 310 (KB) to Facility Vertical Datum	15.00ft
Horizontal Reference Pt	Slot	Unit 310 (KB) to Mean Sea Level	1278.00ft
Vertical Reference Pt	Unit 310 (KB)	Unit 310 (KB) to Mud Line at Slot (Jennifer 3408 3-34H SL 225 FSL, 2220 FWL)	15.00ft
MD Reference Pt	Unit 310 (KB)	Section Origin	N 0.00, E 0.00 ft
Field Vertical Reference	Mean Sea Level	Section Azimuth	355.70°



# Actual Wellpath Report

Sandridge Jennifer 3408 3-34H\_Final Surveys.  
Page 2 of 5



## REFERENCE WELLPATH IDENTIFICATION

Operator	Sandridge Energy	Slot	Jennifer 3408 3-34H SL 225 FSL, 2220 FWL
Area	Kansas	Well	Subject
Field	Harper County, Kansas (Sandridge Energy) NAD27 / Grid	Wellbore	Jennifer 3408 3-34H Actual
Facility	Jennifer 3408 3-34H Sec. 34-34S-8W		

## WELLPATH DATA (124 stations) † = interpolated/extrapolated station

MD [ft]	Inclination [°]	Azimuth [°]	TVD [ft]	Vert Sect [ft]	North [ft]	East [ft]	Grid East [US ft]	Grid North [US ft]	DLS [°/100ft]	Comments
0.00†	0.000	6.280	0.00	0.00	0.00	0.00	2094947.00	134938.00	0.00	
15.00	0.000	6.280	15.00	0.00	0.00	0.00	2094947.00	134938.00	0.00	
250.00	0.300	6.280	250.00	0.60	0.61	0.07	2094947.07	134938.61	0.13	
500.00	0.300	6.280	500.00	1.89	1.91	0.21	2094947.21	134939.91	0.00	
744.00	0.300	6.280	743.99	3.15	3.18	0.35	2094947.35	134941.18	0.00	
817.00	0.170	6.280	816.99	3.44	3.48	0.38	2094947.38	134941.48	0.18	
909.00	0.190	225.610	908.99	3.48	3.51	0.29	2094947.29	134941.51	0.37	
1001.00	0.220	197.210	1000.99	3.22	3.23	0.13	2094947.13	134941.23	0.11	
1093.00	0.220	177.000	1092.99	2.87	2.89	0.08	2094947.08	134940.89	0.08	
1185.00	0.410	158.040	1184.99	2.38	2.41	0.22	2094947.22	134940.41	0.23	
1277.00	0.280	155.120	1276.99	1.86	1.90	0.43	2094947.43	134939.90	0.14	
1369.00	0.090	347.320	1368.99	1.72	1.76	0.51	2094947.51	134939.76	0.40	
1461.00	0.280	350.230	1460.99	2.02	2.06	0.46	2094947.46	134940.06	0.21	
1551.00	0.260	311.700	1550.99	2.38	2.41	0.27	2094947.27	134940.41	0.20	
1643.00	0.340	317.410	1642.98	2.75	2.75	-0.07	2094946.93	134940.75	0.09	
1735.00	0.330	354.980	1734.98	3.23	3.21	-0.28	2094946.72	134941.21	0.23	
1829.00	0.170	332.390	1828.98	3.62	3.61	-0.37	2094946.63	134941.61	0.20	
1924.00	0.160	181.010	1923.98	3.62	3.60	-0.43	2094946.57	134941.60	0.34	
2019.00	0.380	358.900	2018.98	3.80	3.78	-0.44	2094946.56	134941.78	0.57	
2114.00	0.230	324.480	2113.98	4.28	4.25	-0.56	2094946.44	134942.25	0.24	
2209.00	0.090	303.640	2208.98	4.49	4.45	-0.73	2094946.27	134942.45	0.16	
2304.00	0.330	298.310	2303.98	4.68	4.62	-1.04	2094945.96	134942.62	0.25	
2399.00	0.150	249.240	2398.98	4.80	4.70	-1.39	2094945.61	134942.71	0.27	
2493.00	0.070	187.980	2492.98	4.71	4.60	-1.52	2094945.48	134942.60	0.14	
2588.00	0.500	9.600	2587.98	5.05	4.96	-1.46	2094945.54	134942.96	0.60	
2683.00	0.070	310.010	2682.98	5.49	5.40	-1.43	2094945.57	134943.40	0.49	
2778.00	0.070	22.240	2777.98	5.59	5.49	-1.45	2094945.55	134943.49	0.09	
2873.00	0.290	126.770	2872.97	5.48	5.40	-1.24	2094945.76	134943.40	0.33	
2968.00	0.100	36.030	2967.97	5.39	5.33	-1.00	2094946.00	134943.33	0.32	
3063.00	0.300	278.320	3062.97	5.50	5.43	-1.19	2094945.81	134943.43	0.38	
3159.00	0.110	290.070	3158.97	5.60	5.50	-1.53	2094945.47	134943.50	0.20	
3254.00	0.190	145.430	3253.97	5.50	5.40	-1.53	2094945.47	134943.40	0.30	
3348.00	0.420	346.910	3347.97	5.70	5.61	-1.52	2094945.48	134943.61	0.64	
3443.00	0.220	270.500	3442.97	6.06	5.95	-1.78	2094945.22	134943.95	0.45	
3633.00	0.160	27.780	3632.97	6.32	6.18	-2.02	2094944.98	134944.18	0.17	
3728.00	0.360	356.530	3727.97	6.73	6.60	-1.97	2094945.03	134944.60	0.25	
3823.00	0.030	283.430	3822.97	7.03	6.90	-2.02	2094944.98	134944.90	0.37	
3886.00	1.440	338.870	3885.96	7.80	7.65	-2.32	2094944.68	134945.65	2.26	
3918.00	4.210	348.090	3917.92	9.35	9.17	-2.71	2094944.29	134947.17	8.74	
3949.00	6.970	352.700	3948.77	12.35	12.15	-3.18	2094943.82	134950.15	9.01	
3981.00	9.010	355.650	3980.46	16.80	16.57	-3.62	2094943.38	134954.58	6.50	
4012.00	11.130	357.170	4010.98	22.22	21.98	-3.95	2094943.05	134959.98	6.89	
4044.00	12.730	356.980	4042.29	28.83	28.59	-4.29	2094942.71	134966.59	5.00	
4076.00	14.240	356.810	4073.40	36.29	36.04	-4.69	2094942.31	134974.04	4.72	
4107.00	15.870	355.660	4103.34	44.34	44.07	-5.22	2094941.78	134982.08	5.35	

## REFERENCE WELLPATH IDENTIFICATION

Operator	Sandridge Energy	Slot	Jennifer 3408 3-34H SL 225 FSL, 2220 FWL
Area	Kansas	Well	Subject
Field	Harper County, Kansas (Sandridge Energy) NAD27 / Grid	Wellbore	Jennifer 3408 3-34H Actual
Facility	Jennifer 3408 3-34H Sec. 34-34S-8W		

## WELLPATH DATA (124 stations) † = interpolated/extrapolated station

MD [ft]	Inclination [°]	Azimuth [°]	TVD [ft]	Vert Sect [ft]	North [ft]	East [ft]	Grid East [US ft]	Grid North [US ft]	DLS [°/100ft]	Comments
4139.00	18.400	354.750	4133.92	53.77	53.47	-6.02	2094940.98	134991.47	7.95	
4171.00	21.980	352.570	4163.94	64.80	64.44	-7.25	2094939.75	135002.44	11.43	
4202.00	24.510	351.120	4192.43	77.01	76.55	-9.00	2094938.00	135014.55	8.37	
4234.00	27.830	350.770	4221.14	91.07	90.48	-11.22	2094935.78	135028.49	10.39	
4264.00†	30.481	349.305	4247.34	105.61	104.87	-13.76	2094933.24	135042.88	9.15	Hard Line Cross 4264 MD (4247 TVD) 106 VS X:2094933 Y:135043 330 FSL, 2208 FWL
4265.00	30.570	349.260	4248.20	106.11	105.37	-13.85	2094933.15	135043.38	9.15	
4297.00	32.540	349.370	4275.47	122.76	121.83	-16.96	2094930.04	135059.83	6.16	
4329.00	33.480	349.490	4302.30	140.08	138.96	-20.15	2094926.85	135076.97	2.94	
4360.00	34.030	350.350	4328.08	157.22	155.92	-23.17	2094923.83	135093.93	2.35	
4392.00	35.470	351.950	4354.37	175.40	173.95	-25.97	2094921.03	135111.95	5.33	
4423.00	36.750	354.060	4379.41	193.65	192.08	-28.19	2094918.81	135130.09	5.76	
4455.00	38.350	355.450	4404.78	213.15	211.50	-29.97	2094917.03	135149.51	5.66	
4487.00	40.420	355.530	4429.51	233.45	231.74	-31.56	2094915.44	135169.75	6.47	
4518.00	42.750	355.570	4452.70	254.03	252.25	-33.16	2094913.84	135190.26	7.52	
4550.00	44.370	355.030	4475.89	276.08	274.23	-34.97	2094912.03	135212.24	5.19	
4582.00	45.000	354.800	4498.64	298.58	296.64	-36.96	2094910.04	135234.65	2.03	
4613.00	45.250	354.400	4520.51	320.54	318.51	-39.03	2094907.97	135256.53	1.22	
4645.00	47.080	354.970	4542.67	343.62	341.49	-41.16	2094905.83	135279.51	5.86	
4676.00	48.860	354.430	4563.43	366.64	364.42	-43.29	2094903.70	135302.44	5.89	
4771.00	50.260	354.480	4625.05	438.92	436.38	-50.28	2094896.72	135374.40	1.47	
4803.00	50.380	354.980	4645.48	463.55	460.91	-52.54	2094894.46	135398.93	1.26	
4834.00	50.610	355.890	4665.20	487.47	484.75	-54.44	2094892.55	135422.77	2.38	
4866.00	52.580	356.230	4685.08	512.54	509.76	-56.17	2094890.83	135447.79	6.21	
4898.00	55.830	356.660	4703.79	538.49	535.67	-57.77	2094889.22	135473.69	10.21	
4929.00	59.390	357.210	4720.40	564.66	561.80	-59.17	2094887.83	135499.83	11.58	
4961.00	63.050	357.010	4735.80	592.69	589.81	-60.59	2094886.41	135527.84	11.45	
4992.00	66.240	357.080	4749.07	620.69	617.78	-62.03	2094884.97	135555.81	10.29	
5024.00	68.260	356.360	4761.45	650.20	647.24	-63.72	2094883.28	135585.28	6.64	
5055.00	70.870	356.680	4772.27	679.24	676.24	-65.48	2094881.52	135614.27	8.47	
5087.00	74.420	356.820	4781.81	709.77	706.72	-67.21	2094879.78	135644.76	11.10	
5118.00	76.900	357.200	4789.49	739.80	736.72	-68.78	2094878.22	135674.75	8.09	
5150.00	79.440	357.270	4796.05	771.11	768.00	-70.29	2094876.71	135706.04	7.94	
5181.00	81.570	358.050	4801.17	801.66	798.54	-71.54	2094875.46	135736.59	7.31	
5213.00	84.110	358.150	4805.15	833.38	830.27	-72.59	2094874.41	135768.32	7.94	
5244.00	87.040	358.490	4807.55	864.25	861.17	-73.49	2094873.50	135799.21	9.51	
5280.00	90.620	358.310	4808.28	900.20	897.14	-74.50	2094872.50	135835.18	9.96	
5317.00	91.910	359.400	4807.46	937.13	934.12	-75.24	2094871.76	135872.17	4.56	
5412.00	91.880	359.090	4804.32	1031.90	1029.06	-76.49	2094870.51	135967.11	0.33	
5507.00	91.110	358.590	4801.84	1126.72	1124.01	-78.41	2094868.58	136062.06	0.97	
5602.00	91.140	359.840	4799.98	1221.52	1218.98	-79.71	2094867.28	136157.04	1.32	
5697.00	91.200	1.230	4798.04	1316.16	1313.95	-78.83	2094868.17	136252.02	1.46	
5792.00	90.620	0.130	4796.53	1410.79	1408.93	-77.70	2094869.30	136347.00	1.31	
5886.00	90.060	358.560	4795.97	1504.60	1502.92	-78.77	2094868.22	136441.00	1.77	
5981.00	89.540	357.600	4796.30	1599.51	1597.87	-81.96	2094865.04	136535.95	1.15	
6075.00	89.440	357.260	4797.14	1693.46	1691.77	-86.17	2094860.82	136629.85	0.38	

## REFERENCE WELLPATH IDENTIFICATION

Operator	Sandridge Energy	Slot	Jennifer 3408 3-34H SL 225 FSL, 2220 FWL
Area	Kansas	Well	Subject
Field	Harper County, Kansas (Sandridge Energy) NAD27 / Grid	Wellbore	Jennifer 3408 3-34H Actual
Facility	Jennifer 3408 3-34H Sec. 34-34S-8W		

## WELLPATH DATA (124 stations)

MD [ft]	Inclination [°]	Azimuth [°]	TVD [ft]	Vert Sect [ft]	North [ft]	East [ft]	Grid East [US ft]	Grid North [US ft]	DLS [°/100ft]	Comments
6170.00	90.490	357.460	4797.20	1788.42	1786.66	-90.55	2094856.45	136724.76	1.13	
6265.00	91.140	356.130	4795.85	1883.39	1881.50	-95.86	2094851.14	136819.60	1.56	
6360.00	90.980	354.950	4794.09	1978.38	1976.20	-103.24	2094843.75	136914.30	1.25	
6455.00	91.110	356.680	4792.36	2073.36	2070.93	-110.18	2094836.82	137009.03	1.83	
6550.00	91.360	354.870	4790.31	2168.33	2165.64	-117.17	2094829.82	137103.75	1.92	
6645.00	89.940	354.490	4789.23	2263.31	2260.22	-125.98	2094821.01	137198.34	1.55	
6740.00	91.170	355.640	4788.31	2358.29	2354.86	-134.15	2094812.84	137292.98	1.77	
6835.00	90.710	356.650	4786.75	2453.28	2449.63	-140.54	2094806.45	137387.76	1.17	
6930.00	91.450	355.910	4784.96	2548.25	2544.42	-146.70	2094800.29	137482.55	1.10	
7025.00	91.440	355.770	4782.57	2643.22	2639.14	-153.59	2094793.40	137577.27	0.15	
7120.00	90.520	354.620	4780.94	2738.20	2733.78	-161.55	2094785.45	137671.92	1.55	
7215.00	91.390	354.760	4779.36	2833.17	2828.36	-170.34	2094776.65	137766.51	0.93	
7310.00	90.930	354.470	4777.43	2928.14	2922.92	-179.25	2094767.74	137861.07	0.57	
7405.00	91.540	355.190	4775.39	3023.10	3017.51	-187.81	2094759.18	137955.67	0.99	
7501.00	90.770	354.660	4773.45	3119.07	3113.12	-196.30	2094750.69	138051.28	0.97	
7595.00	90.340	353.260	4772.54	3213.02	3206.59	-206.19	2094740.80	138144.75	1.56	
7690.00	90.090	352.470	4772.18	3307.90	3300.85	-217.99	2094729.00	138239.02	0.87	
7785.00	90.090	352.840	4772.04	3402.77	3395.07	-230.13	2094716.85	138333.25	0.39	
7880.00	90.810	353.230	4771.29	3497.66	3489.37	-241.65	2094705.33	138427.55	0.86	
7975.00	90.340	353.070	4770.34	3592.56	3583.68	-252.98	2094694.00	138521.87	0.52	
8064.00	91.550	353.590	4768.87	3681.47	3672.07	-263.32	2094683.67	138610.26	1.48	
8128.00	91.270	352.800	4767.29	3745.39	3735.60	-270.90	2094676.09	138673.79	1.31	
8191.00	91.460	352.190	4765.79	3808.28	3798.04	-279.13	2094667.86	138736.23	1.01	
8285.00	91.230	352.820	4763.59	3902.10	3891.21	-291.38	2094655.60	138829.41	0.71	
8380.00	91.040	353.900	4761.70	3997.01	3985.55	-302.37	2094644.62	138923.76	1.15	
8476.00	91.420	353.910	4759.64	4092.94	4080.99	-312.56	2094634.43	139019.20	0.40	
8570.00	91.510	353.150	4757.24	4186.84	4174.36	-323.15	2094623.84	139112.57	0.81	
8665.00	91.390	354.060	4754.84	4281.74	4268.74	-333.72	2094613.26	139206.95	0.97	
8760.00	91.050	352.610	4752.81	4376.64	4363.07	-344.75	2094602.23	139301.29	1.57	
8855.00	91.270	352.020	4750.89	4471.45	4457.20	-357.45	2094589.53	139395.42	0.66	
8950.00	91.040	352.120	4748.98	4566.24	4551.27	-370.55	2094576.43	139489.50	0.26	
9044.00	90.890	351.300	4747.39	4660.00	4644.27	-384.10	2094562.88	139582.51	0.89	
9066.00	90.830	350.990	4747.06	4681.93	4666.01	-387.49	2094559.49	139604.25	1.44	
9109.00	90.830	350.990	4746.44	4724.78	4708.47	-394.22	2094552.76	139646.71	0.00	Actual BHL 9109 MD (4746 TVD) 4725 VS X:2094553 Y:139647 341 FNL, 1940 FWL



# Actual Wellpath Report

Sandridge Jennifer 3408 3-34H\_Final Surveys.  
Page 5 of 5



## REFERENCE WELLPATH IDENTIFICATION

Operator	Sandridge Energy	Slot	Jennifer 3408 3-34H SL 225 FSL, 2220 FWL
Area	Kansas	Well	Subject
Field	Harper County, Kansas (Sandridge Energy) NAD27 / Grid	Wellbore	Jennifer 3408 3-34H Actual
Facility	Jennifer 3408 3-34H Sec. 34-34S-8W		

## TARGETS

Name	MD [ft]	TVD [ft]	North [ft]	East [ft]	Grid East [US ft]	Grid North [US ft]	Latitude	Longitude	Shape
BHL 330 FNL, 1980' FWL		4742.38	4719.76	-354.98	<b>2094592.00</b>	<b>139658.00</b>	37°02'59.149"N	98°10'33.250"W	point

## WELLPATH COMPOSITION - Ref Wellbore: Jennifer 3408 3-34H Actual    Ref Wellpath: AWP - Final

Start MD [ft]	End MD [ft]	Positional Uncertainty Model	Log Name/Comment	Wellbore
15.00	744.00	Generic gyro - northseeking (Standard)	Gyro Surveys	Jennifer 3408 3-34H Actual
744.00	9066.00	NaviTrak (Standard)	INTEQ MWD	Jennifer 3408 3-34H Actual
9066.00	9109.00	Blind Drilling (std)	Projection to bit	Jennifer 3408 3-34H Actual