



1106685

Operator Name: _____ Lease Name: _____ Well #: _____

Sec. _____ Twp. _____ S. R. _____ East West County: _____

INSTRUCTIONS: Show important tops of formations penetrated. Detail all cores. Report all final copies of drill stems tests giving interval tested, time tool open and closed, flowing and shut-in pressures, whether shut-in pressure reached static level, hydrostatic pressures, bottom hole temperature, fluid recovery, and flow rates if gas to surface test, along with final chart(s). Attach extra sheet if more space is needed.

Final Radioactivity Log, Final Logs run to obtain Geophysical Data and Final Electric Logs must be emailed to kcc-well-logs@kcc.ks.gov. Digital electronic log files must be submitted in LAS version 2.0 or newer AND an image file (TIFF or PDF).

Drill Stem Tests Taken <i>(Attach Additional Sheets)</i>	<input type="checkbox"/> Yes <input type="checkbox"/> No	<input type="checkbox"/> Log	Formation (Top), Depth and Datum	<input type="checkbox"/> Sample
Samples Sent to Geological Survey	<input type="checkbox"/> Yes <input type="checkbox"/> No	Name	Top	Datum
Cores Taken	<input type="checkbox"/> Yes <input type="checkbox"/> No			
Electric Log Run	<input type="checkbox"/> Yes <input type="checkbox"/> No			
List All E. Logs Run:				

CASING RECORD <input type="checkbox"/> New <input type="checkbox"/> Used							
Report all strings set-conductor, surface, intermediate, production, etc.							
Purpose of String	Size Hole Drilled	Size Casing Set (In O.D.)	Weight Lbs. / Ft.	Setting Depth	Type of Cement	# Sacks Used	Type and Percent Additives

ADDITIONAL CEMENTING / SQUEEZE RECORD				
Purpose:	Depth Top Bottom	Type of Cement	# Sacks Used	Type and Percent Additives
<input type="checkbox"/> Perforate				
<input type="checkbox"/> Protect Casing				
<input type="checkbox"/> Plug Back TD				
<input type="checkbox"/> Plug Off Zone				

Did you perform a hydraulic fracturing treatment on this well? Yes No *(If No, skip questions 2 and 3)*

Does the volume of the total base fluid of the hydraulic fracturing treatment exceed 350,000 gallons? Yes No *(If No, skip question 3)*

Was the hydraulic fracturing treatment information submitted to the chemical disclosure registry? Yes No *(If No, fill out Page Three of the ACO-1)*

Shots Per Foot	PERFORATION RECORD - Bridge Plugs Set/Type Specify Footage of Each Interval Perforated	Acid, Fracture, Shot, Cement Squeeze Record <i>(Amount and Kind of Material Used)</i>	Depth

TUBING RECORD: Size: _____ Set At: _____ Packer At: _____ Liner Run: Yes No

Date of First, Resumed Production, SWD or ENHR. _____ Producing Method:
 Flowing Pumping Gas Lift Other *(Explain)* _____

Estimated Production Per 24 Hours	Oil Bbls.	Gas Mcf	Water Bbls.	Gas-Oil Ratio	Gravity

DISPOSITION OF GAS: <input type="checkbox"/> Vented <input type="checkbox"/> Sold <input type="checkbox"/> Used on Lease <i>(If vented, Submit ACO-18.)</i>	METHOD OF COMPLETION: <input type="checkbox"/> Open Hole <input type="checkbox"/> Perf. <input type="checkbox"/> Dually Comp. <input type="checkbox"/> Commingled <i>(Submit ACO-5)</i> <i>(Submit ACO-4)</i> <input type="checkbox"/> Other <i>(Specify)</i> _____	PRODUCTION INTERVAL: _____ _____
--	---	---

Form	ACO1 - Well Completion
Operator	Vincent Oil Corporation
Well Name	Overmyer 2-9
Doc ID	1106685

All Electric Logs Run

Dual Induction
Density - Neutron
Micro-log
Sonic log

Form	ACO1 - Well Completion
Operator	Vincent Oil Corporation
Well Name	Overmyer 2-9
Doc ID	1106685

Tops

Name	Top	Datum
Heebner Shale	4369	(-1875)
Brown Limestone	4531	(-2037)
Lansing	4543	(-2049)
Stark Shale	4865	(-2371)
Base Kansas City	4980	(-2496)
Pawnee	5073	(-2579)
Cherokee Shale	5122	(-2628)
Base of Penn	5216	(-2722)
Mississippian	5237	(-2743)
RTD - LTD	5450	(-2956)

QUALITY WELL SERVICE, INC.

Federal Tax I.D. # 481187368

5494

Home Office 324 Simpson St., Pratt, KS 67124

Rich's Cell 620-727-3409
Brady's Cell 620-727-6964

Office / Fax 620-672-3663

Date	9-6-12	Sec.	9	Twp.	29	Range	22	County	Ford	State	Ks	On Location		Finish	2:30
Lease	Overmyer	Well No.	2-9		Location Kingsdown 3 East 1/2 N West into										
Contractor	Duke 1				Owner										
Type Job	Conductor				To Quality Well Service, Inc. You are hereby requested to rent cementing equipment and furnish cementer and helper to assist owner or contractor to do work as listed.										
Hole Size	17 1/2		T.D.		251										
Csg.	13 3/8		Depth		252										
Tbg. Size			Depth		Charge To Vincent Oil										
Tool			Depth		Street										
Cement Left in Csg.			Shoe Joint		City State										
Meas Line			Displace		35.5										
EQUIPMENT					Cement Amount Ordered 200sx Common 2% Gel 3% Gel 1/4 C.F.										
Pumptrk	6	No.	Dave		Common 200										
Bulktrk	9	No.	Mike		Poz. Mix										
Bulktrk		No.			Gel. 4										
Pickup		No.			Calcium 7										
JOB SERVICES & REMARKS					Hulls										
Rat Hole					Salt										
Mouse Hole					Flowseal 50										
Centralizers					Kol-Seal										
Baskets					Mud CLR 48										
D/V or Port Collar					CFL-117 or CD110 CAF 38										
Ran 6jts 13 3/8.					Sand										
Established circulation with Mud Pump.					Handling 211 Mileage 50										
Mixed and pumped 200 sx common 2% gel 3% gel 1/4 C.F. Displaced with 35.5 bbls H ₂ O					FLOAT EQUIPMENT										
cement did circulate.					Guide Shoe										
					Centralizer										
					Baskets										
					AFU Inserts										
					Float Shoe										
					Latch Down										
					Pumptrk Charge Surplus										
					Mileage 50										
					Tax										
					Discount										
					Total Charge										
Signature Mike Brady															

Taylor Printing, Inc.

QUALITY WELL SERVICE, INC.

Federal Tax I.D. # 481187368

5495

Home Office 324 Simpson St., Pratt, KS 67124

Rich's Cell 620-727-3409
Brady's Cell 620-727-6964

Office / Fax 620-672-3663

Date	9-6-12	Sec.	9	Twp.	29	Range	22	County	Ford	State	Ks	On Location	Finish	9:00 pm
Lease	Overmeyer	Well No.	2-9		Location									
Contractor	Duke 1				Owner									
Type Job	Surface				To Quality Well Service, Inc. You are hereby requested to rent cementing equipment and furnish cementer and helper to assist owner or contractor to do work as listed.									
Hole Size	12 1/4		T.D.		662									
Csg.	8 5/8		Depth		662 645.03									
Tbg. Size			Depth		Charge To									
Tool			Depth		Vincent oil									
Cement Left in Csg.			Leads		17.00									
Meas Line			Displace		39.5									
EQUIPMENT										The above was done to satisfaction and supervision of owner agent or contractor.				
Pumptrk	6	No.	Dax		Cement Amount Ordered									
Bulktrk	9	No.	Derek		220.00 65/35 6% Gel									
Bulktrk	5	No.	Mike		3% CC 1/4 C.F. 100.00 common 2% Gel 3% CC									
Pickup		No.			Common 235									
JOB SERVICES & REMARKS										Poz. Mix 85				
Rat Hole										Gel. 14				
Mouse Hole										Calcium 12				
Centralizers										Hulls				
Baskets										Salt				
D/V or Port Collar										Flowseal 82.50				
Ran 10 jts 8 5/8 csg.										Kol-Seal				
Established circulation with Mud Pump.										Mud CLR 48				
Pumped 220.00 65/35 6% Gel										CFL-117 or CD110 CAF 38				
3% CC 1/4 C.F. 100.00 common 2% Gel										Sand				
3% CC 1/4 C.F.										Handling 346				
Cement circulate to surface										Mileage 50 50				
										FLOAT EQUIPMENT				
										Guide Shoe				
										Centralizer				
										Baskets				
										AFU Inserts				
										Float Shoe				
										Latch Down				
										8 5/8 Wooden Plug.				
										8 5/8 baffle Plate.				
										Pumptrk Charge Surface				
										Mileage 50				
										Tax				
										Discount				
										Total Charge				
Signature: Mike Hedger														

ALLIED OIL & GAS SERVICES, LLC 053888

Federal Tax I.D.# 20-5975804

REMIT TO P.O. BOX 31
RUSSELL, KANSAS 67665

SERVICE POINT:
Medicine Lodge KS

Overmyer

DATE <i>09-17-12</i>	SEC <i>09</i>	TWP. <i>29S</i>	RANGE <i>22W</i>	CALLED OUT	ON LOCATION	JOB START	JOB FINISH
LEASE <i>Overmyer</i> WELL # <i>2-9</i>				LOCATION <i>King's down, ES, 2E, 14N, w/into</i>		COUNTY <i>Ford</i>	STATE <i>KS</i>
OLD OR NEW (Circle one)						<i>1.00</i>	<i>7.95</i>

CONTRACTOR *Duke #1*

TYPE OF JOB *Production*

HOLE SIZE *7 7/8* T.D. *5450*

CASING SIZE *4 1/2* DEPTH *5434*

TUBING SIZE DEPTH

DRILL PIPE DEPTH

TOOL DEPTH

PRES. MAX *1200#* MINIMUM *—*

MEAS. LINE SHOE JOINT *22.23*

CEMENT LEFT IN CSG. *22'*

PERFS.

DISPLACEMENT *89 BGls 2% KCL Water*

OWNER *Vincent*

CEMENT

AMOUNT ORDERED *50x60:40:40 gal &*

175sx class A ASC + 5# Kalscal + 5% FL-

160 + 7% gas Block & Defoamer & 100 BGls

ASF & 9 gals Chyno

COMMON *30 sx A* @ *17.90* *537.00*

POZMIX *20 sx* @ *9.35* *187.00*

GEL @

CHLORIDE @

ASC *175 sx* @ *20.90* *3657.50*

Kalscal 875# @ *.98* *857.50*

FL-160 82.25# @ *18.90* *101.15*

Gas Block 115# @ *18.00* *2070*

Defoamer 24 @ *9.80* *235.20*

ASF 500 Gals @ *1.39* *695.00*

Clapio 9 Gals @ *34.40* *309.60*

EQUIPMENT

PUMP TRUCK CEMENTER *Dr Felio* *1*

548-545 HELPER *H. Piper* *2*

BULK TRUCK

381-250 DRIVER *B. Book* *3*

BULK TRUCK

DRIVER

HANDLING *250* @ *2.48* *620.00*

MILEAGE *605.12* @ *2.60* *1573.32*

TOTAL *10943.27*

605.12 *12296.64*

REMARKS:

See Job log

Did Bump Plug

Float Did Hold

THX ☺

SERVICE

DEPTH OF JOB *5434*

PUMP TRUCK CHARGE *3,099.25*

EXTRA FOOTAGE @

MILEAGE *50* @ *7.70* *385.00*

MANIFOLD *head rental* @ *275.00*

Light Vehicle 50 @ *4.40* *220.00*

CHARGE TO: *Vincent*

STREET

CITY STATE ZIP

TOTAL *3979.25*

PLUG & FLOAT EQUIPMENT

1- Guide Shoe @ *224.64*

1- AFU insert @ *183.69*

6- centralizers @ *56.18* *337.08*

1- TRP @ *83.07* *83.07*

TOTAL *828.48*

To: Allied Oil & Gas Services, LLC.

You are hereby requested to rent cementing equipment and furnish cementer and helper(s) to assist owner or contractor to do work as is listed. The above work was done to satisfaction and supervision of owner agent or contractor. I have read and understand the "GENERAL TERMS AND CONDITIONS" listed on the reverse side.

SALES TAX (If Any) *753.53*

TOTAL CHARGES *15,651.00* *17104.37*

DISCOUNT *20%* *3130.20* *3420.87* *13653.50*

(NET) 12,520.80

PRINTED NAME *ERIK HAGANS*

SIGNATURE *[Signature]*



**TRILOBITE
TESTING, INC.**

DRILL STEM TEST REPORT

Vincent Oil Corp.
155 N. Market, Ste. 700
Wichita Ks. 67202
ATTN: Ken LeBlanc

9-29s-22w Ford Ks.
Overmyer#2-9
Job Ticket: 49606 **DST#: 1**
Test Start: 2012.09.15 @ 04:33:22

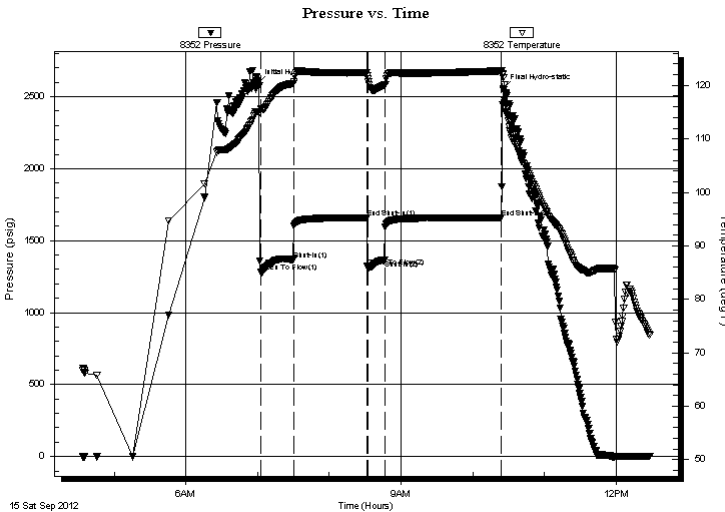
GENERAL INFORMATION:

Formation: **Miss.**
Deviated: No Whipstock: ft (KB) Test Type: Conventional Bottom Hole (Initial)
Time Tool Opened: 07:02:37 Tester: Gary Pevoteaux
Time Test Ended: 12:28:22 Unit No: 56
Interval: 5246.00 ft (KB) To 5270.00 ft (KB) (TVD) Reference Elevations: 2494.00 ft (KB)
Total Depth: 5270.00 ft (KB) (TVD) 2482.00 ft (CF)
Hole Diameter: 7.88 inches Hole Condition: Poor KB to GR/CF: 12.00 ft

Serial #: 8352 Outside
Press @ Run Depth: 1365.34 psig @ 5247.00 ft (KB) Capacity: 8000.00 psig
Start Date: 2012.09.15 End Date: 2012.09.15 Last Calib.: 2012.09.15
Start Time: 04:33:27 End Time: 12:28:21 Time On Btm: 2012.09.15 @ 07:00:22
Time Off Btm: 2012.09.15 @ 10:25:37

TEST COMMENT: IF: Strong blow . GTS in 80 secs. (see gas flow report)
IS: Weak blow . 1 - 4 1/2".
FF: Strong blow . (see gas flow report)
FS: Weak blow . 1 - 5".

PRESSURE SUMMARY



Time (Min.)	Pressure (psig)	Temp (deg F)	Annotation
0	2593.51	115.13	Initial Hydro-static
3	1282.91	115.64	Open To Flow (1)
30	1368.93	120.33	Shut-In(1)
91	1660.36	122.39	End Shut-In(1)
92	1317.70	121.15	Open To Flow (2)
106	1365.34	120.06	Shut-In(2)
204	1660.55	122.73	End Shut-In(2)
206	2555.79	121.97	Final Hydro-static

Recovery

Length (ft)	Description	Volume (bbl)
4.00	OCWM 11%o 25%w 64%m	0.06

Gas Rates

	Choke (inches)	Pressure (psig)	Gas Rate (Mcf/d)
First Gas Rate	1.00	233.00	7112.46
Last Gas Rate	1.00	319.00	9584.85
Max. Gas Rate	1.00	319.00	9584.85



TRILOBITE TESTING, INC.

DRILL STEM TEST REPORT

Vincent Oil Corp.
155 N. Market, Ste. 700
Wichita Ks. 67202
ATTN: Ken LeBlanc

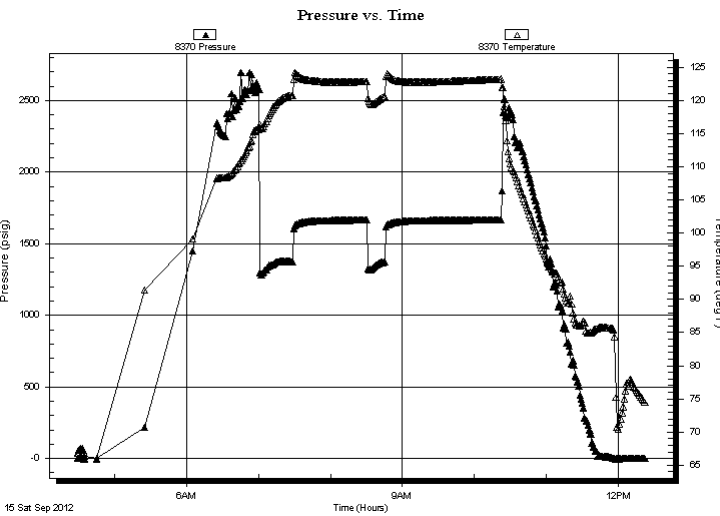
9-29s-22w Ford Ks.
Overmyer#2-9
Job Ticket: 49606 **DST#: 1**
Test Start: 2012.09.15 @ 04:33:22

GENERAL INFORMATION:

Formation: **Miss.**
Deviated: No Whipstock: ft (KB)
Time Tool Opened: 07:02:37
Time Test Ended: 12:28:22
Interval: **5246.00 ft (KB) To 5270.00 ft (KB) (TVD)**
Total Depth: 5270.00 ft (KB) (TVD)
Hole Diameter: 7.88 inches Hole Condition: Poor
Test Type: Conventional Bottom Hole (Initial)
Tester: Gary Pevoteaux
Unit No: 56
Reference Elevations: 2494.00 ft (KB)
2482.00 ft (CF)
KB to GR/CF: 12.00 ft

Serial #: 8370 **Inside**
Press @ Run Depth: psig @ 5247.00 ft (KB) Capacity: 8000.00 psig
Start Date: 2012.09.15 End Date: 2012.09.15 Last Calib.: 2012.09.15
Start Time: 04:28:54 End Time: 12:22:48 Time On Btm:
Time Off Btm:

TEST COMMENT: IF: Strong blow . GTS in 80 secs. (see gas flow report)
IS: Weak blow . 1 - 4 1/2".
FF: Strong blow . (see gas flow report)
FS: Weak blow . 1 - 5".



PRESSURE SUMMARY

Time (Min.)	Pressure (psig)	Temp (deg F)	Annotation

Recovery

Length (ft)	Description	Volume (bbl)
4.00	OCWM 11%o 25%w 64% m	0.06

Gas Rates

	Choke (inches)	Pressure (psig)	Gas Rate (Mcf/d)
First Gas Rate	1.00	233.00	7112.46
Last Gas Rate	1.00	319.00	9584.85
Max. Gas Rate	1.00	319.00	9584.85



**TRILOBITE
TESTING, INC.**

DRILL STEM TEST REPORT

FLUID SUMMARY

Vincent Oil Corp.

9-29s-22w Ford Ks.

155 N.Market, Ste.700
Wichita Ks.67202

Overmyer#2-9

Job Ticket: 49606

DST#: 1

ATTN: Ken LeBlanc

Test Start: 2012.09.15 @ 04:33:22

Mud and Cushion Information

Mud Type: Gel Chem

Cushion Type:

Oil API:

deg API

Mud Weight: 9.00 lb/gal

Cushion Length:

ft

Water Salinity:

10400 ppm

Viscosity: 52.00 sec/qt

Cushion Volume:

bbbl

Water Loss: 11.99 in³

Gas Cushion Type:

Resistivity: 0.00 ohm.m

Gas Cushion Pressure:

psig

Salinity: 10400.00 ppm

Filter Cake: 0.20 inches

Recovery Information

Recovery Table

Length ft	Description	Volume bbl
4.00	OCWM 11%o 25%w 64%m	0.056

Total Length: 4.00 ft

Total Volume: 0.056 bbl

Num Fluid Samples: 0

Num Gas Bombs: 1

Serial #: gp-1

Laboratory Name: Caraway

Laboratory Location: Liberal, KS

Recovery Comments:



**TRILOBITE
TESTING, INC.**

DRILL STEM TEST REPORT

GAS RATES

Vincent Oil Corp.

9-29s-22w Ford Ks.

155 N. Market, Ste. 700
Wichita Ks. 67202

Overmyer#2-9

Job Ticket: 49606

DST#: 1

ATTN: Ken LeBlanc

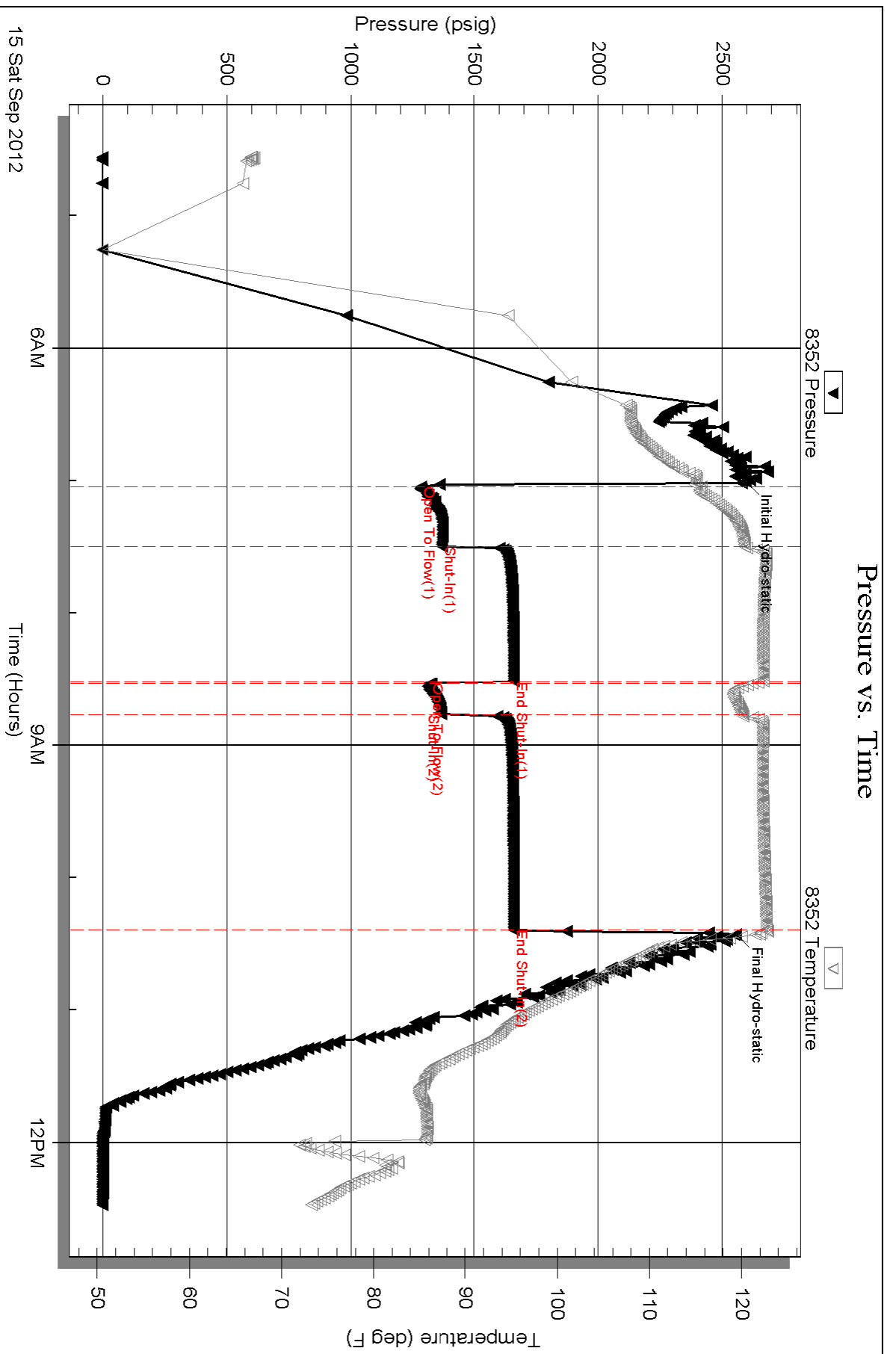
Test Start: 2012.09.15 @ 04:33:22

Gas Rates Information

Temperature: 59 (deg F)
Relative Density: 0.65
Z Factor: 0.8

Gas Rates Table

Flow Period	Elapsed Time	Choke (inches)	Pressure (psig)	Gas Rate (Mcf/d)
1	10	1.00	233.00	7112.46
1	20	1.00	255.00	7744.93
1	30	1.00	259.00	7859.93
2	10	1.00	248.00	7543.69
2	15	1.00	319.00	9584.85



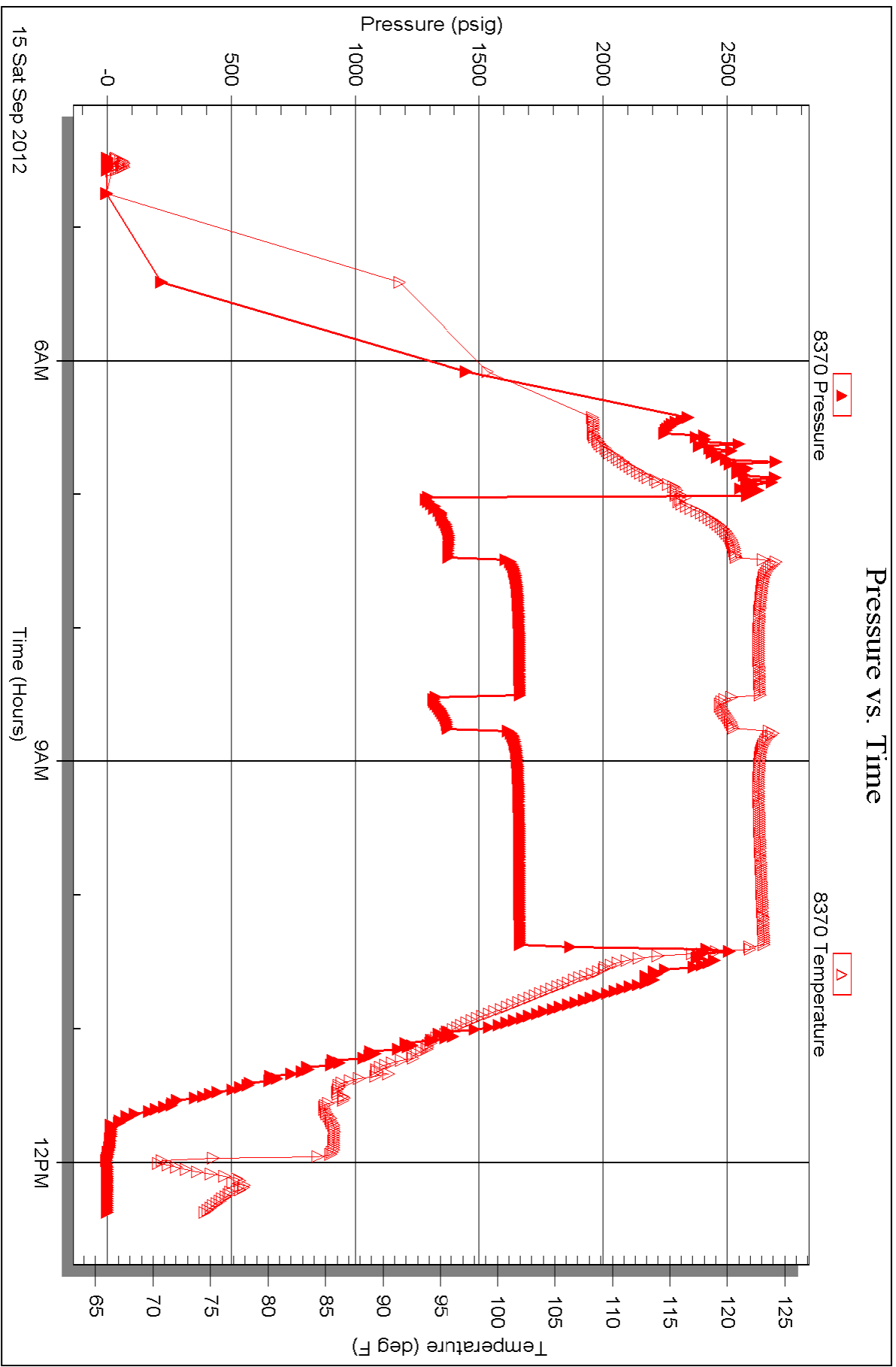
Serial #: 8370

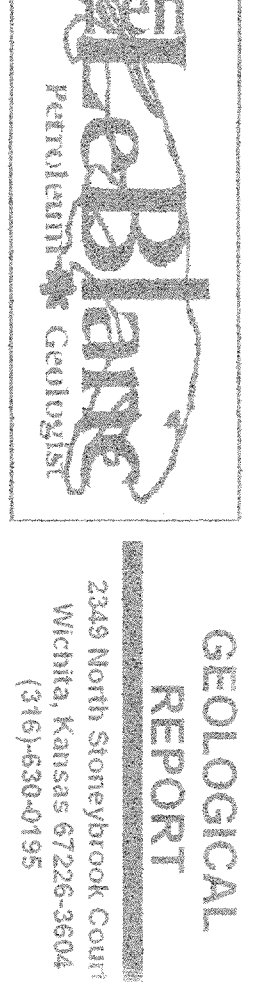
Inside

Vincent Oil Corp.

Overmyer#2-9

DST Test Number: 1





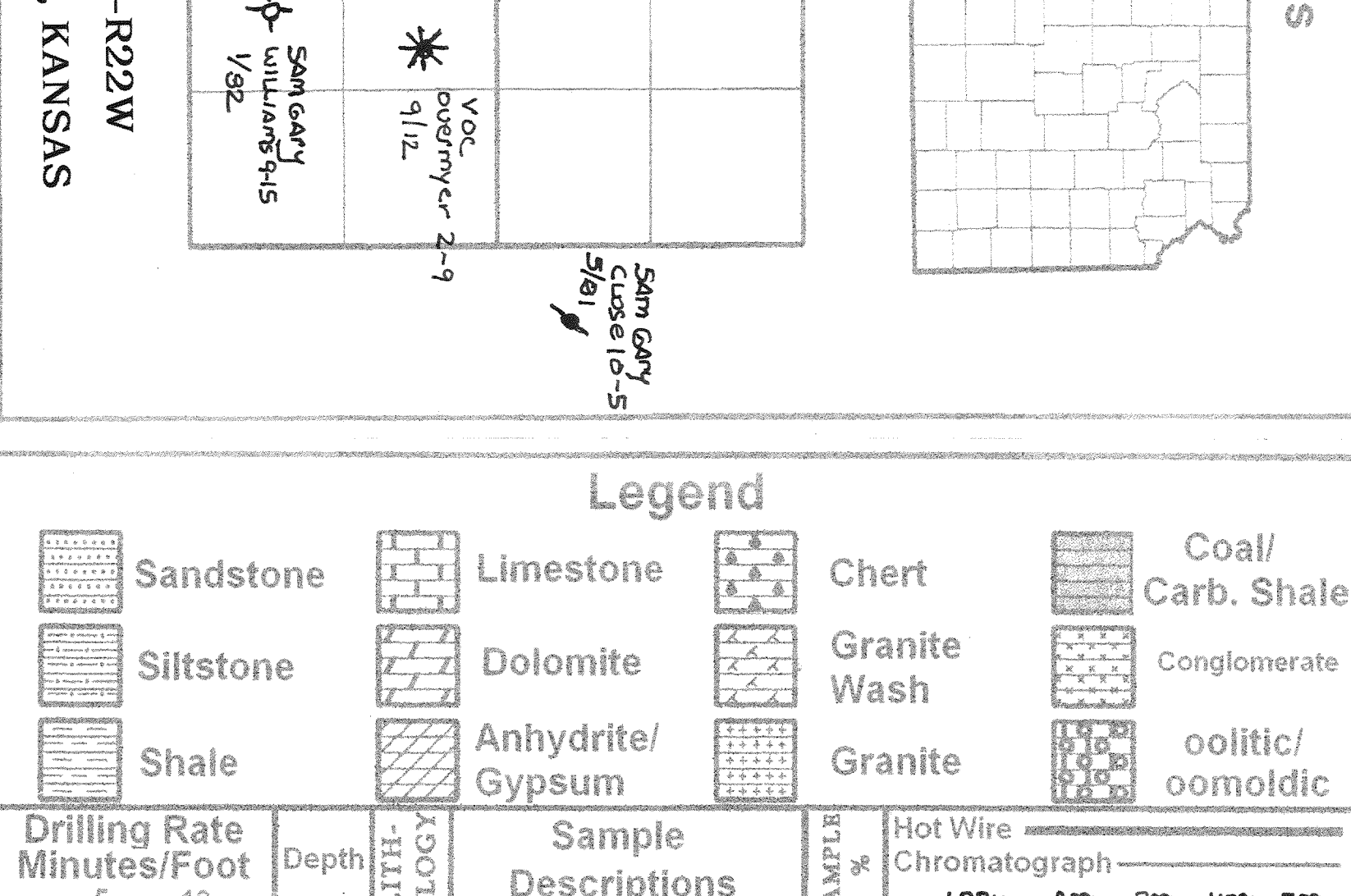
GEOLOGICAL REPORT

2345 North Stonybrook Court
Wichita, Kansas 67268-3804
(316) 639-0195

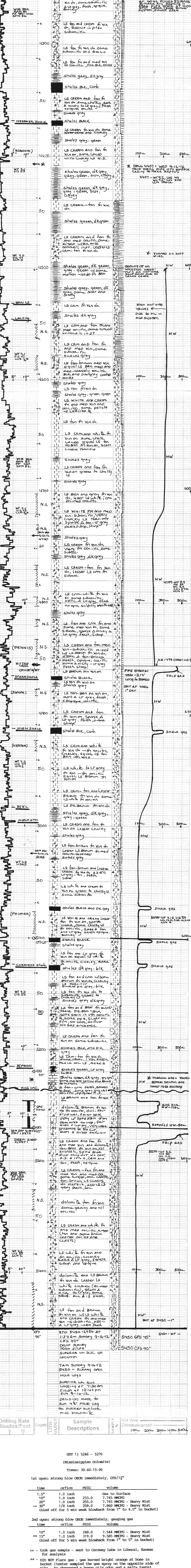
COMPANY: VINCENT OIL CORP. (SOOH)
LEASE: OVERMYER 2-9
FIELD: DEVELOPMENT 2-9
LOCATION: 2120 NW 1/4, R180 F.E.L.
SECTION: 9 TOWNSHIP: 29S RANGE: 22W
COUNTY: FORD STATE: KANSAS
CONTRACTOR: DUKE DOLLE #12 (5129)
COMPLETED DRILLING: MED. 9-5-12
CONTRACTED DRILLING: SUN. 9-16-12
RIG ID: 5450 LTO: 5150
MUD: VAC. AT 3800' FEET
MUD TYPE: CHEMICAL / SODIUM
MUD VOLUME: 3800' FEET
STAMPLERS SAVED FROM: 4260 FEET TO 5450 FEET
STAMPLERS EXAMINED FROM: 4260 FEET TO 5450 FEET
GEOLOGICAL SUPERVISION FROM: 4260 FEET TO 5450 FEET
STAMPLERS EXAMINED FROM: 4260 FEET TO 5450 FEET
NOTES: PULP SYSTEM - MUD CO. SUPP. C&G CONT. - QUALITY
CONT. SUPPLIES - MUD LOGS, LOGS, LOGS
WATER - WELL FUEL - BURNER FROM OILS, DISTIS
TRUBOJET 1370 - LOGGING - SUPERIOR LOG SVC.
FLOOD C&G CONT. - ALUMINUM CEMENT
COZZES - NONE
APR 15-05T-20042
ELEVATIONS
RB 2494 FEET
DB 2492 FEET

Remarks: THE VOC OVERMYER 2-9 WAS DRILLED TO A RFD OF 5450 FT. SOME 100 FEET PLUS WITHIN THE MISS. UN. AS PART OF THE MAJOR EAST 3D PROJECT. DST 1 IN THE MISS. DOMINANT PAY IS TO BE EVALUATED THROUGH 4 1/2" PRODUCTION CASING

Formation Tops Table with columns: Sample, Corrected, Electric, Subsea

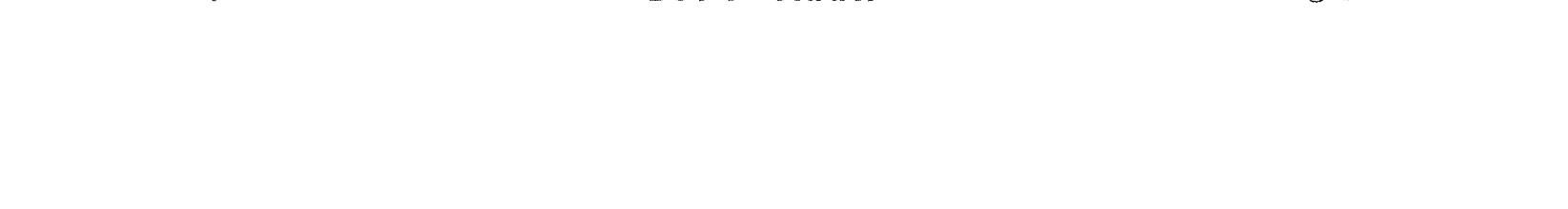


Legend table with Lithology and Sample Descriptions columns



Drilling Rate Minutes/Foot and Hot Wire Chromatograph data

1st open: strong blow OBOB immediately, GTS/1 1/2
2nd open: strong blow OBOB immediately, gauging gas
3rd open: strong blow OBOB immediately, gauging gas



Conservation Division
Finney State Office Building
130 S. Market, Rm. 2078
Wichita, KS 67202-3802



Phone: 316-337-6200
Fax: 316-337-6211
<http://kcc.ks.gov/>

Mark Sievers, Chairman
Thomas E. Wright, Commissioner
Shari Feist Albrecht, Commissioner

Sam Brownback, Governor

January 03, 2013

M.L. Korphage
Vincent Oil Corporation
155 N MARKET STE 700
WICHITA, KS 67202-1821

Re: ACO1
API 15-057-20842-00-00
Overmyer 2-9
SE/4 Sec.09-29S-22W
Ford County, Kansas

Dear Production Department:

We are herewith requesting that the Well Completion Form ACO-1 and attached information for the subject well be held confidential for a period of two years.

Should you have any questions or need additional information regarding subject well, please contact our office.

Respectfully,
M.L. Korphage