



Confidentiality Requested:

Yes No

KANSAS CORPORATION COMMISSION 1109477
OIL & GAS CONSERVATION DIVISION

Form ACO-1

August 2013

Form must be Typed
Form must be Signed
All blanks must be Filled

WELL COMPLETION FORM
WELL HISTORY - DESCRIPTION OF WELL & LEASE

OPERATOR: License # _____

Name: _____

Address 1: _____

Address 2: _____

City: _____ State: _____ Zip: _____ + _____

Contact Person: _____

Phone: (_____) _____

CONTRACTOR: License # _____

Name: _____

Wellsite Geologist: _____

Purchaser: _____

Designate Type of Completion:

- New Well Re-Entry Workover
- Oil WSW SWD SIOW
- Gas D&A ENHR SIGW
- OG GSW Temp. Abd.
- CM (Coal Bed Methane)
- Cathodic Other (Core, Expl., etc.): _____

If Workover/Re-entry: Old Well Info as follows:

Operator: _____

Well Name: _____

Original Comp. Date: _____ Original Total Depth: _____

- Deepening Re-perf. Conv. to ENHR Conv. to SWD
- Plug Back Conv. to GSW Conv. to Producer
- Commingled Permit #: _____
- Dual Completion Permit #: _____
- SWD Permit #: _____
- ENHR Permit #: _____
- GSW Permit #: _____

| | | |
|-----------------------------------|-----------------|---|
| Spud Date or Recompletion Date | Date Reached TD | Completion Date or Recompletion Date |
|-----------------------------------|-----------------|---|

API No. 15 - _____

Spot Description: _____

_____-_____-_____- Sec. _____ Twp. _____ S. R. _____ East West

_____ Feet from North / South Line of Section

_____ Feet from East / West Line of Section

Footages Calculated from Nearest Outside Section Corner:

- NE NW SE SW

GPS Location: Lat: _____, Long: _____
(e.g. xx.xxxxx) (e.g. -xxx.xxxxx)

Datum: NAD27 NAD83 WGS84

County: _____

Lease Name: _____ Well #: _____

Field Name: _____

Producing Formation: _____

Elevation: Ground: _____ Kelly Bushing: _____

Total Vertical Depth: _____ Plug Back Total Depth: _____

Amount of Surface Pipe Set and Cemented at: _____ Feet

Multiple Stage Cementing Collar Used? Yes No

If yes, show depth set: _____ Feet

If Alternate II completion, cement circulated from: _____

feet depth to: _____ w/ _____ sx cmt.

Drilling Fluid Management Plan

(Data must be collected from the Reserve Pit)

Chloride content: _____ ppm Fluid volume: _____ bbls

Dewatering method used: _____

Location of fluid disposal if hauled offsite:

Operator Name: _____

Lease Name: _____ License #: _____

Quarter _____ Sec. _____ Twp. _____ S. R. _____ East West

County: _____ Permit #: _____

AFFIDAVIT

I am the affiant and I hereby certify that all requirements of the statutes, rules and regulations promulgated to regulate the oil and gas industry have been fully complied with and the statements herein are complete and correct to the best of my knowledge.

Submitted Electronically

KCC Office Use ONLY

- Confidentiality Requested
Date: _____
- Confidential Release Date: _____
- Wireline Log Received
- Geologist Report Received
- UIC Distribution
- ALT I II III Approved by: _____ Date: _____



1109477

Operator Name: _____ Lease Name: _____ Well #: _____

Sec. _____ Twp. _____ S. R. _____ East West County: _____

INSTRUCTIONS: Show important tops of formations penetrated. Detail all cores. Report all final copies of drill stems tests giving interval tested, time tool open and closed, flowing and shut-in pressures, whether shut-in pressure reached static level, hydrostatic pressures, bottom hole temperature, fluid recovery, and flow rates if gas to surface test, along with final chart(s). Attach extra sheet if more space is needed.

Final Radioactivity Log, Final Logs run to obtain Geophysical Data and Final Electric Logs must be emailed to kcc-well-logs@kcc.ks.gov. Digital electronic log files must be submitted in LAS version 2.0 or newer AND an image file (TIFF or PDF).

| | | | | |
|---|--|------------------------------|----------------------------------|---------------------------------|
| Drill Stem Tests Taken <i>(Attach Additional Sheets)</i> | <input type="checkbox"/> Yes <input type="checkbox"/> No | <input type="checkbox"/> Log | Formation (Top), Depth and Datum | <input type="checkbox"/> Sample |
| Samples Sent to Geological Survey | <input type="checkbox"/> Yes <input type="checkbox"/> No | Name | Top | Datum |
| Cores Taken | <input type="checkbox"/> Yes <input type="checkbox"/> No | | | |
| Electric Log Run | <input type="checkbox"/> Yes <input type="checkbox"/> No | | | |
| List All E. Logs Run: | | | | |

| CASING RECORD <input type="checkbox"/> New <input type="checkbox"/> Used | | | | | | | |
|---|-------------------|---------------------------|-------------------|---------------|----------------|--------------|----------------------------|
| Report all strings set-conductor, surface, intermediate, production, etc. | | | | | | | |
| Purpose of String | Size Hole Drilled | Size Casing Set (In O.D.) | Weight Lbs. / Ft. | Setting Depth | Type of Cement | # Sacks Used | Type and Percent Additives |
| | | | | | | | |
| | | | | | | | |
| | | | | | | | |

| ADDITIONAL CEMENTING / SQUEEZE RECORD | | | | |
|---|------------------|----------------|--------------|----------------------------|
| Purpose: | Depth Top Bottom | Type of Cement | # Sacks Used | Type and Percent Additives |
| <input type="checkbox"/> Perforate | | | | |
| <input type="checkbox"/> Protect Casing | | | | |
| <input type="checkbox"/> Plug Back TD | | | | |
| <input type="checkbox"/> Plug Off Zone | | | | |

Did you perform a hydraulic fracturing treatment on this well? Yes No *(If No, skip questions 2 and 3)*

Does the volume of the total base fluid of the hydraulic fracturing treatment exceed 350,000 gallons? Yes No *(If No, skip question 3)*

Was the hydraulic fracturing treatment information submitted to the chemical disclosure registry? Yes No *(If No, fill out Page Three of the ACO-1)*

| Shots Per Foot | PERFORATION RECORD - Bridge Plugs Set/Type Specify Footage of Each Interval Perforated | Acid, Fracture, Shot, Cement Squeeze Record <i>(Amount and Kind of Material Used)</i> | Depth |
|----------------|---|--|-------|
| | | | |
| | | | |
| | | | |
| | | | |
| | | | |

TUBING RECORD: Size: _____ Set At: _____ Packer At: _____ Liner Run: Yes No

Date of First, Resumed Production, SWD or ENHR: _____ Producing Method: Flowing Pumping Gas Lift Other *(Explain)* _____

| Estimated Production Per 24 Hours | Oil Bbls. | Gas Mcf | Water Bbls. | Gas-Oil Ratio | Gravity |
|-----------------------------------|-----------|---------|-------------|---------------|---------|
| | | | | | |

| | | |
|--|--|---|
| DISPOSITION OF GAS: <input type="checkbox"/> Vented <input type="checkbox"/> Sold <input type="checkbox"/> Used on Lease <i>(If vented, Submit ACO-18.)</i> | METHOD OF COMPLETION: <input type="checkbox"/> Open Hole <input type="checkbox"/> Perf. <input type="checkbox"/> Dually Comp. <input type="checkbox"/> Commingled <i>(Submit ACO-5)</i> <input type="checkbox"/> Other <i>(Specify)</i> _____ | PRODUCTION INTERVAL: _____ _____ |
|--|--|---|

Conservation Division
Finney State Office Building
130 S. Market, Rm. 2078
Wichita, KS 67202-3802



Phone: 316-337-6200
Fax: 316-337-6211
<http://kcc.ks.gov/>

Mark Sievers, Chairman
Thomas E. Wright, Commissioner
Shari Feist Albrecht, Commissioner

Sam Brownback, Governor

January 24, 2013

Leon Rodak
Murfin Drilling Co., Inc.
250 N WATER STE 300
WICHITA, KS 67202-1216

Re: ACO1
API 15-153-20909-00-00
Poore 1-14
NW/4 Sec.14-03S-36W
Rawlins County, Kansas

Dear Production Department:

We are herewith requesting that the Well Completion Form ACO-1 and attached information for the subject well be held confidential for a period of two years.

Should you have any questions or need additional information regarding subject well, please contact our office.

Respectfully,
Leon Rodak

| MDCI Poore #1-14 970' FNL 970'FWL Sec. 14-3S-36W 3327' KB | | | | | MDCI Sramek 'B' #1-11 2405' FSL 2000'FWL Sec. 11-3S-36W 3252' KB | | | |
|---|------------|-------|-----|----------|--|-----|----------|-------|
| Formation | Sample top | Datum | Ref | Log tops | Datum | Ref | Log tops | Datum |
| Anhydrite | 3138 | +189 | +6 | 3140 | *187 | +4 | 3069 | +183 |
| B/Anhydrite | 3174 | +153 | +9 | 3174 | +153 | +9 | 3108 | +144 |
| Neva | 3654 | -327 | +6 | 3650 | -323 | +10 | 3585 | -333 |
| Foraker | 3776 | -449 | +9 | 3775 | -448 | +10 | 3710 | -458 |
| Topeka | 4025 | -698 | +10 | 4033 | -706 | +2 | 3960 | -708 |
| Oread | 4148 | -821 | +5 | 4144 | -817 | +9 | 4078 | -826 |
| Lansing | 4231 | -904 | +12 | 4234 | -907 | +9 | 4170 | -916 |
| Stark | 4455 | -1128 | +5 | 4448 | -1121 | +12 | 4385 | -1133 |
| BKC | 4501 | -1174 | +10 | 4500 | -1173 | +11 | 4436 | -1184 |
| Pawnee | 4623 | -1296 | +11 | 4627 | -1300 | +7 | 4559 | -1307 |
| Cherokee | 4696 | -1369 | +13 | 4697 | -1370 | +12 | 4634 | -1382 |
| Mississippi | 4883 | -1556 | +18 | 4881 | -1554 | +20 | 4826 | -1574 |
| RTD | 5050 | -1723 | | | | | 4950 | -1623 |
| LTD | | | | 5052 | -1725 | | 4954 | -1627 |



DRILL STEM TEST REPORT

Prepared For: **Murfin Drilling Co., Inc.**

250 N Water Siute 300
Wichita, KS 67202

ATTN: Bob Stolze

Poore #1-14

14-3s-36w Rawlins,KS

Start Date: 2012.10.14 @ 22:46:00

End Date: 2012.10.15 @ 06:40:00

Job Ticket #: 48244 DST #: 1

Trilobite Testing, Inc
PO Box 362 Hays, KS 67601
ph: 785-625-4778 fax: 785-625-5620

Printed: 2012.10.23 @ 08:32:11



TRILOBITE TESTING, INC.

DRILL STEM TEST REPORT

Murfin Drilling Co., Inc.
 250 N Water Siute 300
 Wichita, KS 67202
 ATTN: Bob Stolzle

14-3s-36w Rawlins, KS
Poore #1-14
 Job Ticket: 48244 **DST#: 1**
 Test Start: 2012.10.14 @ 22:46:00

GENERAL INFORMATION:

Formation: **Douglas - LKC "A - D**
 Deviated: No Whipstock: ft (KB)
 Time Tool Opened: 00:38:00
 Time Test Ended: 06:40:00
 Test Type: Conventional Bottom Hole (Initial)
 Tester: James Winder
 Unit No: 57
 Interval: **4181.00 ft (KB) To 4310.00 ft (KB) (TVD)**
 Reference Elevations: 3327.00 ft (KB)
 Total Depth: 4310.00 ft (KB) (TVD) 3317.00 ft (CF)
 Hole Diameter: 7.88 inches Hole Condition: Fair KB to GR/CF: 10.00 ft

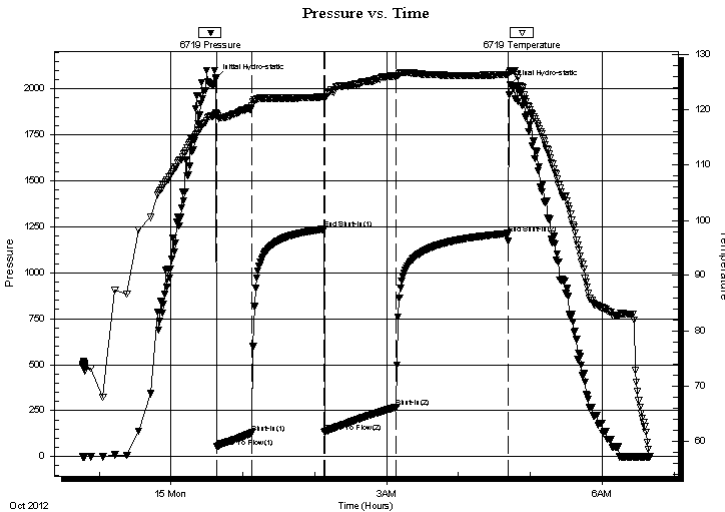
Serial #: 6719

Inside

Press @ Run Depth: 268.91 psig @ 4182.00 ft (KB) Capacity: 8000.00 psig
 Start Date: 2012.10.14 End Date: 2012.10.15 Last Calib.: 2012.10.15
 Start Time: 22:46:05 End Time: 06:39:59 Time On Btm: 2012.10.15 @ 00:37:00
 Time Off Btm: 2012.10.15 @ 04:43:00

TEST COMMENT: 30 - IF: 3" Surge blow at open, built to 9 1/2"
 60 - IS: Bled off, No blow back
 60 - FF: Blow started at 4 min., built to 9 3/4"
 90 - FS: Bled off, No blow back

PRESSURE SUMMARY



| Time (Min.) | Pressure (psig) | Temp (deg F) | Annotation |
|-------------|-----------------|--------------|----------------------|
| 0 | 2053.93 | 119.42 | Initial Hydro-static |
| 1 | 53.15 | 119.27 | Open To Flow (1) |
| 31 | 129.82 | 120.72 | Shut-In(1) |
| 91 | 1236.52 | 122.41 | End Shut-In(1) |
| 91 | 133.57 | 122.23 | Open To Flow (2) |
| 151 | 268.91 | 126.12 | Shut-In(2) |
| 244 | 1213.42 | 126.45 | End Shut-In(2) |
| 246 | 2021.03 | 126.98 | Final Hydro-static |

Recovery

| Length (ft) | Description | Volume (bbl) |
|-------------|---------------------------------|--------------|
| 178.00 | SWCM w /trace oil 89%m,7%g, 4%w | 0.88 |
| 352.00 | Mud w /trace oil 95%m, 5%g | 1.73 |
| | | |
| | | |

Gas Rates

| Choke (inches) | Pressure (psig) | Gas Rate (Mcf/d) |
|----------------|-----------------|------------------|
| | | |



**TRILOBITE
TESTING, INC.**

DRILL STEM TEST REPORT

TOOL DIAGRAM

Murfin Drilling Co., Inc.

14-3s-36w Rawlins,KS

250 N Water Siute 300
Wichita, KS 67202

Poore #1-14

Job Ticket: 48244

DST#: 1

ATTN: Bob Stolzle

Test Start: 2012.10.14 @ 22:46:00

Tool Information

| | | | | |
|---------------------------|--------------------|-----------------------|--------------------------------|------------------------------------|
| Drill Pipe: | Length: 3647.00 ft | Diameter: 3.80 inches | Volume: 51.16 bbl | Tool Weight: 2500.00 lb |
| Heavy Wt. Pipe: | Length: 0.00 ft | Diameter: 0.00 inches | Volume: 0.00 bbl | Weight set on Packer: 25000.00 lb |
| Drill Collar: | Length: 530.00 ft | Diameter: 2.25 inches | Volume: 2.61 bbl | Weight to Pull Loose: 85000.00 lb |
| | | | <u>Total Volume: 53.77 bbl</u> | Tool Chased 5.00 ft |
| Drill Pipe Above KB: | 24.00 ft | | | String Weight: Initial 70000.00 lb |
| Depth to Top Packer: | 4181.00 ft | | | Final 72000.00 lb |
| Depth to Bottom Packer: | ft | | | |
| Interval between Packers: | 129.00 ft | | | |
| Tool Length: | 157.00 ft | | | |
| Number of Packers: | 2 | Diameter: 6.75 inches | | |

Tool Comments: Tool slid 2' before opening and then chased 5' to bottom at open - hole lost 15' of mud - 3" surge blow at open

| Tool Description | Length (ft) | Serial No. | Position | Depth (ft) | Accum. Lengths |
|------------------|-------------|------------|----------|------------|--------------------------------|
| Shut In Tool | 5.00 | | | 4158.00 | |
| Hydraulic tool | 5.00 | | | 4163.00 | |
| Jars | 5.00 | | | 4168.00 | |
| Safety Joint | 3.00 | | | 4171.00 | |
| Packer | 5.00 | | | 4176.00 | 28.00 Bottom Of Top Packer |
| Packer | 5.00 | | | 4181.00 | |
| Stubb | 1.00 | | | 4182.00 | |
| Recorder | 0.00 | 6719 | Inside | 4182.00 | |
| Recorder | 0.00 | 8320 | Outside | 4182.00 | |
| Perforations | 25.00 | | | 4207.00 | |
| Blank Spacing | 97.00 | | | 4304.00 | |
| Perforations | 3.00 | | | 4307.00 | |
| Bullnose | 3.00 | | | 4310.00 | 129.00 Bottom Packers & Anchor |

Total Tool Length: 157.00



**TRILOBITE
TESTING, INC.**

DRILL STEM TEST REPORT

FLUID SUMMARY

Murfin Drilling Co., Inc.

14-3s-36w Rawlins,KS

250 N Water Siute 300
Wichita, KS 67202

Poore #1-14

Job Ticket: 48244

DST#: 1

ATTN: Bob Stolzle

Test Start: 2012.10.14 @ 22:46:00

Mud and Cushion Information

Mud Type: Gel Chem

Cushion Type:

Oil API:

deg API

Mud Weight: 9.00 lb/gal

Cushion Length:

ft

Water Salinity:

ppm

Viscosity: 52.00 sec/qt

Cushion Volume:

bbbl

Water Loss: 6.35 in³

Gas Cushion Type:

Resistivity: ohm.m

Gas Cushion Pressure:

psig

Salinity: 1100.00 ppm

Filter Cake: 2.00 inches

Recovery Information

Recovery Table

| Length ft | Description | Volume bbl |
|--------------|--|---------------|
| 178.00 | SWCM w /trace oil 89% <i>m</i> , 7% <i>g</i> , 4% <i>w</i> | 0.875 |
| 352.00 | Mud w /trace oil 95% <i>m</i> , 5% <i>g</i> | 1.731 |

Total Length: 530.00 ft

Total Volume: 2.606 bbl

Num Fluid Samples: 0

Num Gas Bombs: 0

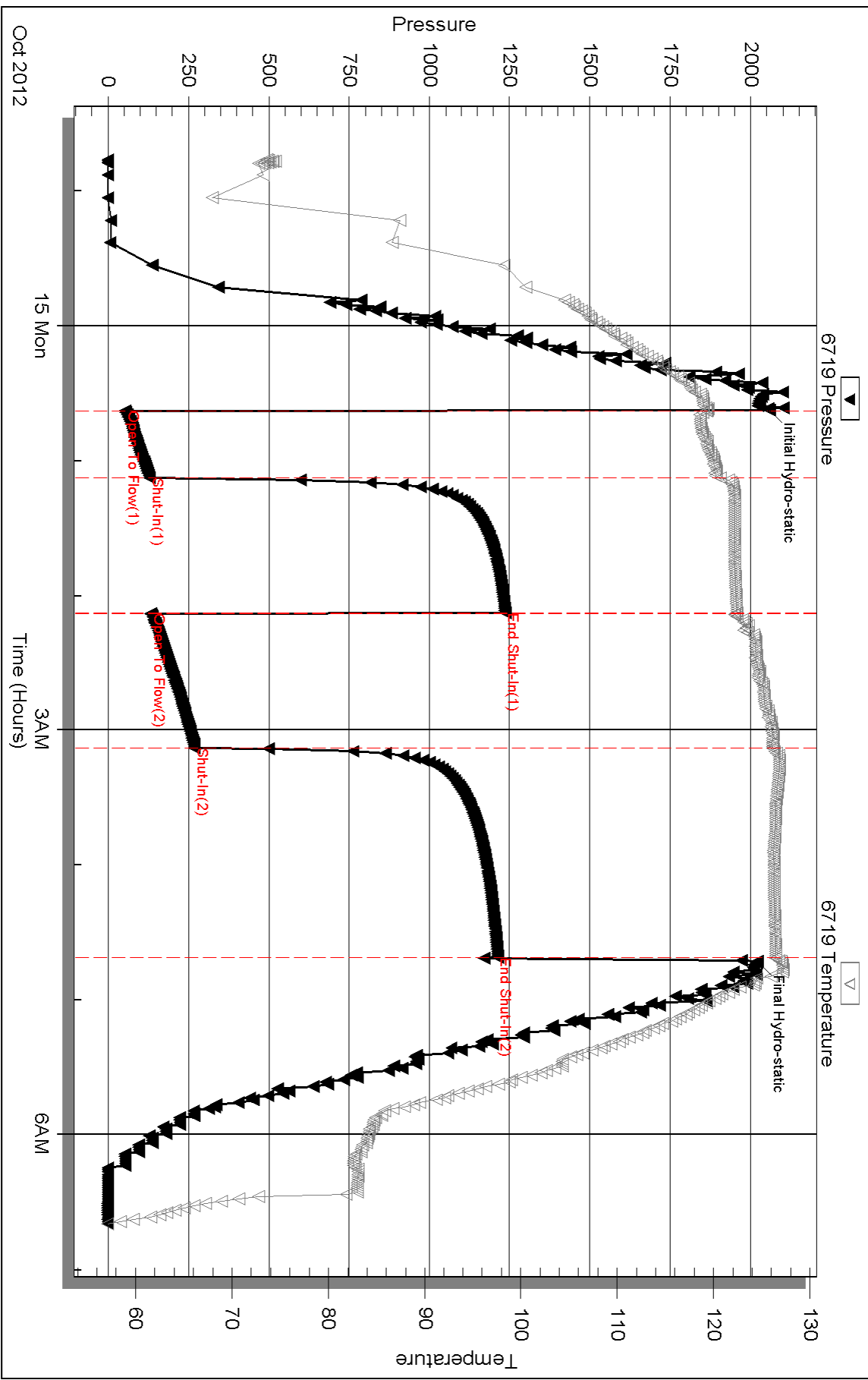
Serial #:

Laboratory Name:

Laboratory Location:

Recovery Comments:

Pressure vs. Time

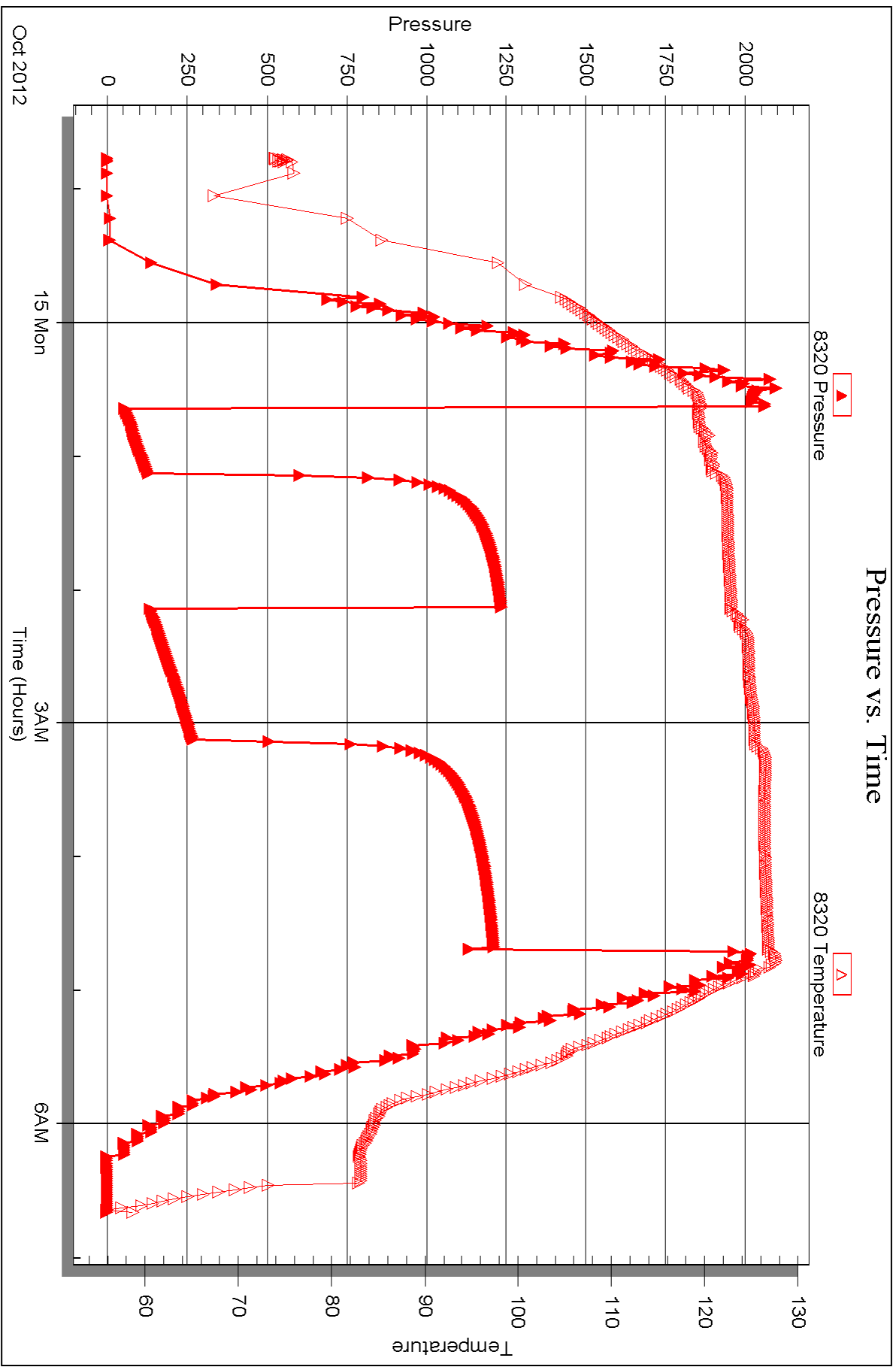


Serial #: 8320

Outside Murfin Drilling Co., Inc.

Poore #1-14

DST Test Number: 1



Triobite Testing, Inc

Ref. No: 48244

Printed: 2012.10.23 @ 08:32:18



DRILL STEM TEST REPORT

Prepared For: **Murfin Drilling Co., Inc.**

250 N Water Siute 300
Wichita, KS 67202

ATTN: Bob Stolzle

Poore #1-14

14-3s-36w Rawlins,KS

Start Date: 2012.10.15 @ 22:25:00

End Date: 2012.10.16 @ 05:16:00

Job Ticket #: 48245 DST #: 2

Trilobite Testing, Inc
PO Box 362 Hays, KS 67601
ph: 785-625-4778 fax: 785-625-5620

Printed: 2012.10.23 @ 08:30:38



TRILOBITE TESTING, INC.

DRILL STEM TEST REPORT

Murfin Drilling Co., Inc.
 250 N Water Siute 300
 Wichita, KS 67202
 ATTN: Bob Stolzle

14-3s-36w Rawlins,KS

Poore #1-14

Job Ticket: 48245

DST#: 2

Test Start: 2012.10.15 @ 22:25:00

GENERAL INFORMATION:

Formation: **LKC "J"**
 Deviated: No Whipstock: ft (KB)
 Time Tool Opened: 00:17:30
 Time Test Ended: 05:16:00
 Interval: **4401.00 ft (KB) To 4450.00 ft (KB) (TVD)**
 Total Depth: 4450.00 ft (KB) (TVD)
 Hole Diameter: 7.88 inches Hole Condition: Fair
 Test Type: Conventional Bottom Hole (Reset)
 Tester: James Winder
 Unit No: 57
 Reference Elevations: 3327.00 ft (KB)
 3317.00 ft (CF)
 KB to GR/CF: 10.00 ft

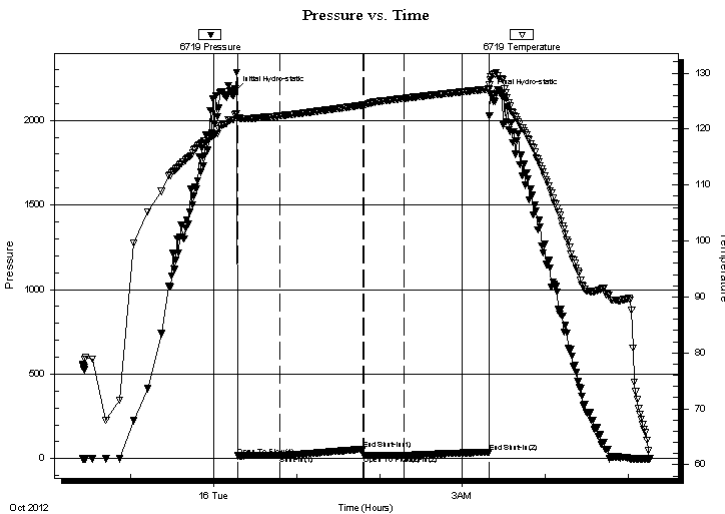
Serial #: 6719

Inside

Press @ Run Depth: 19.70 psig @ 4402.00 ft (KB) Capacity: 8000.00 psig
 Start Date: 2012.10.15 End Date: 2012.10.16 Last Calib.: 2012.10.16
 Start Time: 22:25:05 End Time: 05:15:59 Time On Btm: 2012.10.16 @ 00:16:00
 Time Off Btm: 2012.10.16 @ 03:20:00

TEST COMMENT: 30 - IF: Blow built to 1/4" then died back, dead at 27 min.
 60 - IS: No blow back
 30 - FF: No blow
 60 - FS: No blow back

PRESSURE SUMMARY



| Time (Min.) | Pressure (psig) | Temp (deg F) | Annotation |
|-------------|-----------------|--------------|----------------------|
| 0 | 2177.15 | 122.74 | Initial Hydro-static |
| 2 | 16.59 | 122.03 | Open To Flow (1) |
| 32 | 18.50 | 122.37 | Shut-In(1) |
| 92 | 56.65 | 124.29 | End Shut-In(1) |
| 93 | 18.97 | 124.30 | Open To Flow (2) |
| 122 | 19.70 | 125.51 | Shut-In(2) |
| 183 | 38.84 | 127.15 | End Shut-In(2) |
| 184 | 2157.42 | 128.81 | Final Hydro-static |

Recovery

| Length (ft) | Description | Volume (bbl) |
|-------------|-------------|--------------|
| 3.00 | Mud 100% | 0.01 |
| | | |
| | | |
| | | |
| | | |

* Recovery from multiple tests

Gas Rates

| Choke (inches) | Pressure (psig) | Gas Rate (Mcf/d) |
|----------------|-----------------|------------------|
| | | |



**TRILOBITE
TESTING, INC.**

DRILL STEM TEST REPORT

TOOL DIAGRAM

Murfin Drilling Co., Inc.

14-3s-36w Rawlins,KS

250 N Water Siute 300
Wichita, KS 67202

Poore #1-14

Job Ticket: 48245

DST#: 2

ATTN: Bob Stolzle

Test Start: 2012.10.15 @ 22:25:00

Tool Information

| | | | | | |
|---------------------------|--------------------|-----------------------|--------------------------------|------------------------|-------------|
| Drill Pipe: | Length: 3867.00 ft | Diameter: 3.80 inches | Volume: 54.24 bbl | Tool Weight: | 2500.00 lb |
| Heavy Wt. Pipe: | Length: 0.00 ft | Diameter: 0.00 inches | Volume: 0.00 bbl | Weight set on Packer: | 25000.00 lb |
| Drill Collar: | Length: 530.00 ft | Diameter: 2.25 inches | Volume: 2.61 bbl | Weight to Pull Loose: | 86000.00 lb |
| | | | <u>Total Volume: 56.85 bbl</u> | Tool Chased | 0.00 ft |
| Drill Pipe Above KB: | 25.00 ft | | | String Weight: Initial | 72000.00 lb |
| Depth to Top Packer: | 4401.00 ft | | | Final | 72000.00 lb |
| Depth to Bottom Packer: | ft | | | | |
| Interval between Packers: | 49.00 ft | | | | |
| Tool Length: | 78.00 ft | | | | |
| Number of Packers: | 2 | Diameter: 6.75 inches | | | |

Tool Comments:

Tool Description

Length (ft) Serial No. Position Depth (ft) Accum. Lengths

| Tool Description | Length (ft) | Serial No. | Position | Depth (ft) | Accum. Lengths |
|------------------|-------------|------------|----------|------------|-------------------------------|
| Shut In Tool | 5.00 | | | 4377.00 | |
| Hydraulic tool | 5.00 | | | 4382.00 | |
| Jars | 5.00 | | | 4387.00 | |
| Safety Joint | 3.00 | | | 4390.00 | |
| Change Over Sub | 1.00 | | | 4391.00 | |
| Packer - Shale | 0.00 | | | 4391.00 | |
| Packer | 5.00 | | | 4396.00 | 29.00 Bottom Of Top Packer |
| Packer | 5.00 | | | 4401.00 | |
| Stubb | 1.00 | | | 4402.00 | |
| Recorder | 0.00 | 6719 | Inside | 4402.00 | |
| Recorder | 0.00 | 8320 | Outside | 4402.00 | |
| Perforations | 5.00 | | | 4407.00 | |
| Blank Spacing | 33.00 | | | 4440.00 | |
| Perforations | 7.00 | | | 4447.00 | |
| Bullnose | 3.00 | | | 4450.00 | 49.00 Bottom Packers & Anchor |

Total Tool Length: 78.00



**TRILOBITE
TESTING, INC.**

DRILL STEM TEST REPORT

FLUID SUMMARY

Murfin Drilling Co., Inc.

14-3s-36w Rawlins,KS

250 N Water Siute 300
Wichita, KS 67202

Poore #1-14

Job Ticket: 48245

DST#: 2

ATTN: Bob Stolzle

Test Start: 2012.10.15 @ 22:25:00

Mud and Cushion Information

Mud Type: Gel Chem

Cushion Type:

Oil API:

deg API

Mud Weight: 9.00 lb/gal

Cushion Length:

ft

Water Salinity:

ppm

Viscosity: 50.00 sec/qt

Cushion Volume:

bbbl

Water Loss: 6.33 in³

Gas Cushion Type:

Resistivity: ohm.m

Gas Cushion Pressure:

psig

Salinity: 1100.00 ppm

Filter Cake: 2.00 inches

Recovery Information

Recovery Table

| Length ft | Description | Volume bbl |
|--------------|-------------|---------------|
| 3.00 | Mud 100% | 0.015 |

Total Length: 3.00 ft Total Volume: 0.015 bbl

Num Fluid Samples: 0

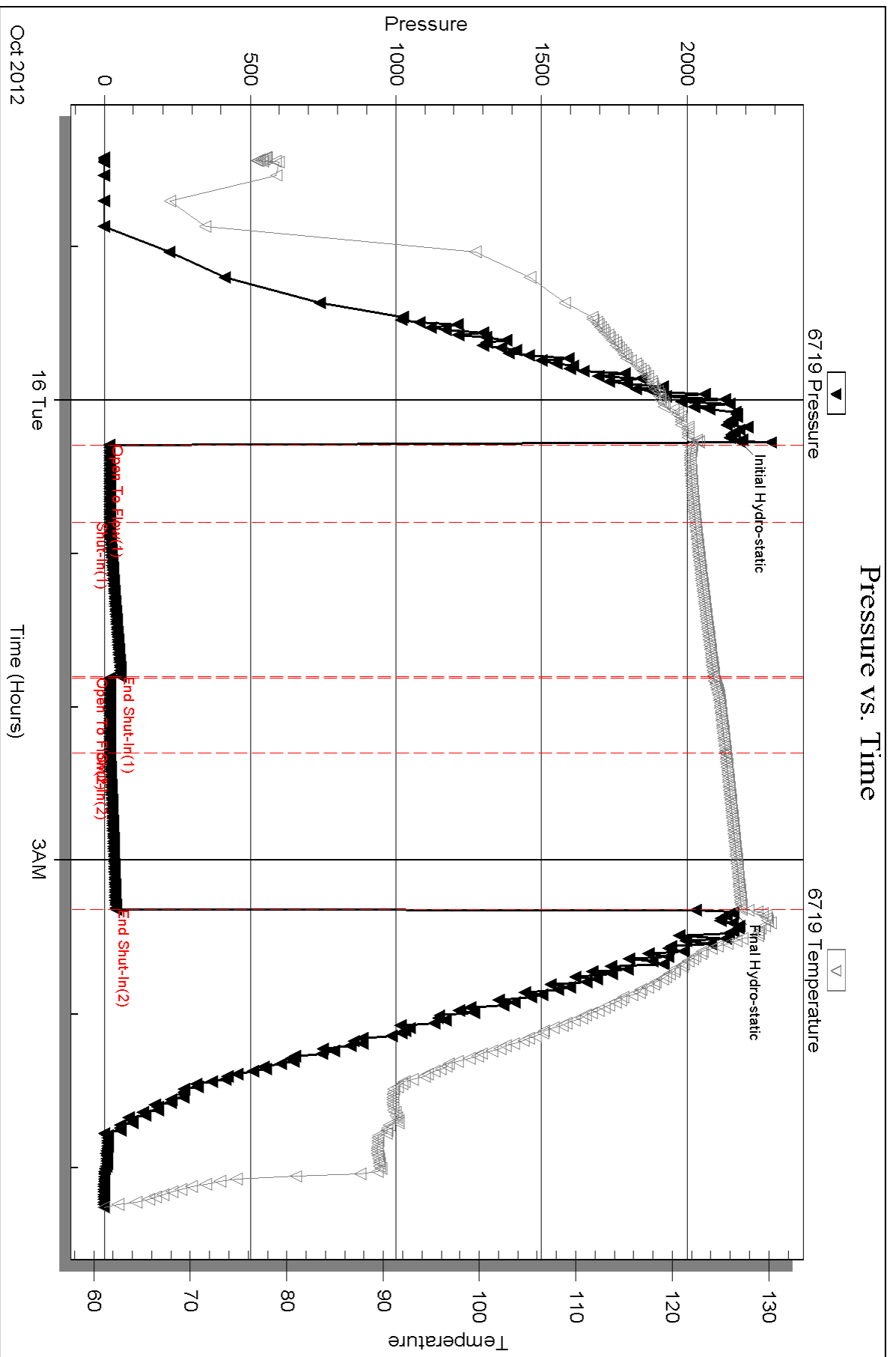
Num Gas Bombs: 0

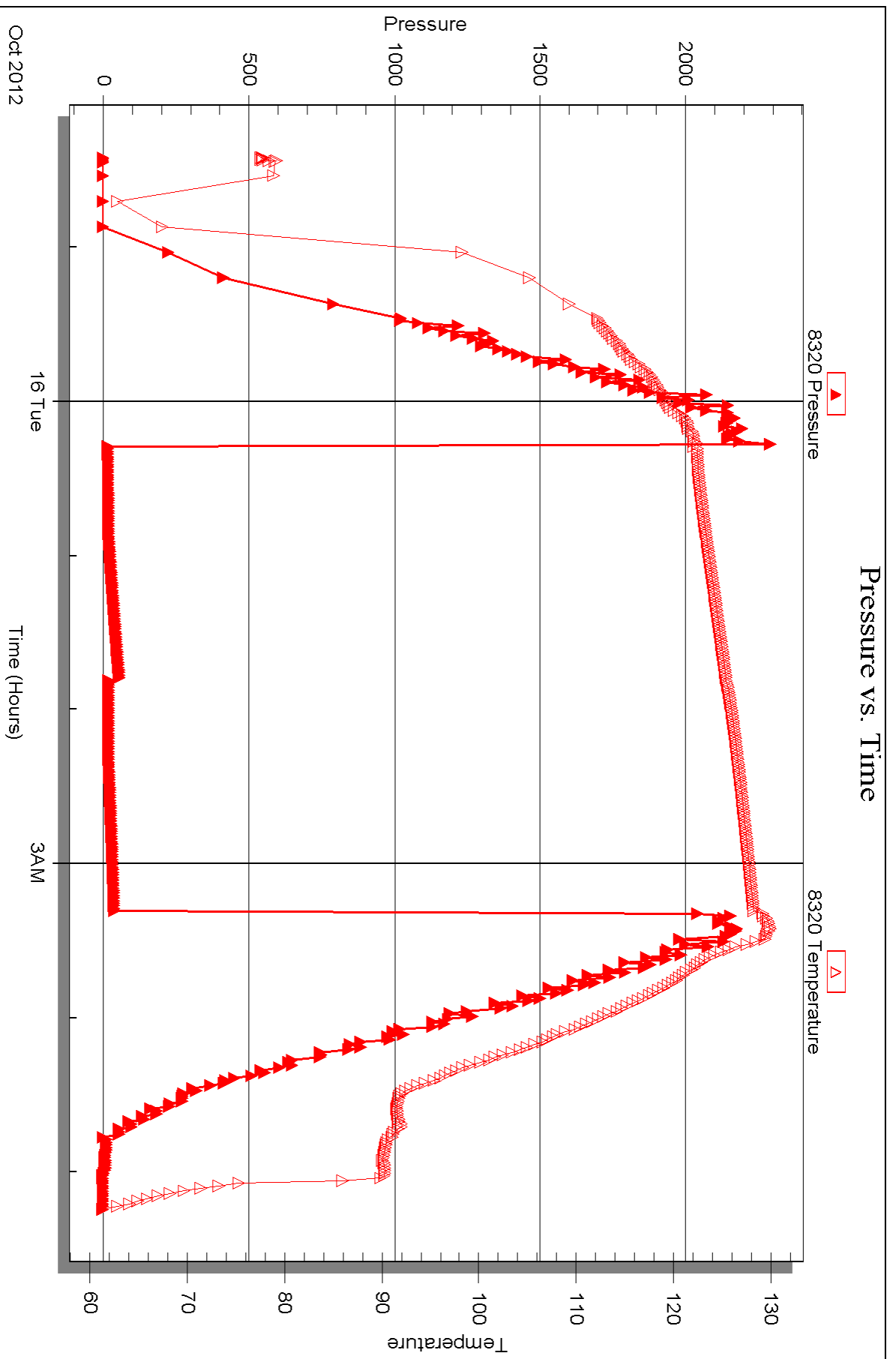
Serial #:

Laboratory Name:

Laboratory Location:

Recovery Comments:







DRILL STEM TEST REPORT

Prepared For: **Murfin Drilling Co., Inc.**

250 N Water Siute 300
Wichita, KS 67202

ATTN: Bob Stolze

Poore #1-14

14-3s-36w Rawlins,KS

Start Date: 2012.10.16 @ 15:51:00

End Date: 2012.10.17 @ 00:00:30

Job Ticket #: 48246 DST #: 3

Trilobite Testing, Inc
PO Box 362 Hays, KS 67601
ph: 785-625-4778 fax: 785-625-5620

Printed: 2012.10.23 @ 08:29:42



TRILOBITE TESTING, INC.

DRILL STEM TEST REPORT

Murfin Drilling Co., Inc.
 250 N Water Siute 300
 Wichita, KS 67202
 ATTN: Bob Stolzle

14-3s-36w Rawlins,KS

Poore #1-14

Job Ticket: 48246

DST#: 3

Test Start: 2012.10.16 @ 15:51:00

GENERAL INFORMATION:

Formation: **Basal Sd/Pleasanton**

Deviated: No Whipstock: ft (KB)

Time Tool Opened: 18:16:30

Time Test Ended: 00:00:30

Test Type: Conventional Bottom Hole (Reset)

Tester: James Winder

Unit No: 57

Interval: 4480.00 ft (KB) To 4510.00 ft (KB) (TVD)

Reference Elevations: 3327.00 ft (KB)

Total Depth: 4510.00 ft (KB) (TVD)

3317.00 ft (CF)

Hole Diameter: 7.88 inches Hole Condition: Fair

KB to GR/CF: 10.00 ft

Serial #: 6719 Inside

Press @ Run Depth: 82.87 psig @ 4481.00 ft (KB)

Capacity: 8000.00 psig

Start Date: 2012.10.16 End Date: 2012.10.17

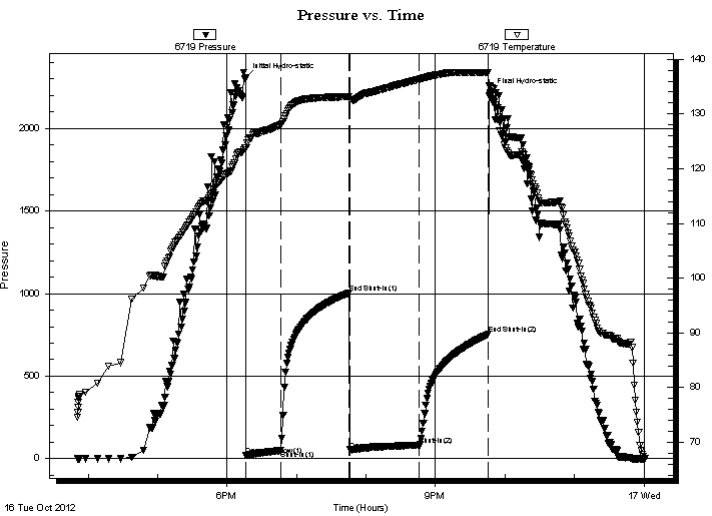
Last Calib.: 2012.10.17

Start Time: 15:51:05 End Time: 00:00:29

Time On Btm: 2012.10.16 @ 18:16:00

Time Off Btm: 2012.10.16 @ 21:47:00

TEST COMMENT: 30 - IF: Blow built to 3"
 60 - IS: Bled off, No blow back
 60 - FF: Blow started at 13 min., built to 1"
 60 - FS: Bled off, No blow back



PRESSURE SUMMARY

| Time (Min.) | Pressure (psig) | Temp (deg F) | Annotation |
|-------------|-----------------|--------------|----------------------|
| 0 | 2305.55 | 123.79 | Initial Hydro-static |
| 1 | 18.58 | 123.81 | Open To Flow (1) |
| 30 | 48.59 | 127.98 | Shut-In(1) |
| 90 | 1003.94 | 133.18 | End Shut-In(1) |
| 91 | 53.33 | 132.66 | Open To Flow (2) |
| 150 | 82.87 | 136.33 | Shut-In(2) |
| 210 | 753.45 | 137.57 | End Shut-In(2) |
| 211 | 2219.40 | 134.98 | Final Hydro-static |

Recovery

| Length (ft) | Description | Volume (bbl) |
|-------------|--|--------------|
| 150.00 | WM 52% _m , 48% _w | 0.74 |
| | | |
| | | |
| | | |
| | | |

* Recovery from multiple tests

Gas Rates

| Choke (inches) | Pressure (psig) | Gas Rate (Mcf/d) |
|----------------|-----------------|------------------|
| | | |



**TRILOBITE
TESTING, INC.**

DRILL STEM TEST REPORT

TOOL DIAGRAM

Murfin Drilling Co., Inc.
250 N Water Siute 300
Wichita, KS 67202
ATTN: Bob Stolzle

14-3s-36w Rawlins,KS
Poore #1-14
Job Ticket: 48246 **DST#: 3**
Test Start: 2012.10.16 @ 15:51:00

Tool Information

| | | | | |
|---------------------------|--------------------|-----------------------|--------------------------------|------------------------------------|
| Drill Pipe: | Length: 3931.00 ft | Diameter: 3.80 inches | Volume: 55.14 bbl | Tool Weight: 2500.00 lb |
| Heavy Wt. Pipe: | Length: 0.00 ft | Diameter: 0.00 inches | Volume: 0.00 bbl | Weight set on Packer: 25000.00 lb |
| Drill Collar: | Length: 530.00 ft | Diameter: 2.25 inches | Volume: 2.61 bbl | Weight to Pull Loose: 82000.00 lb |
| | | | <u>Total Volume: 57.75 bbl</u> | Tool Chased 0.00 ft |
| Drill Pipe Above KB: | 9.00 ft | | | String Weight: Initial 70000.00 lb |
| Depth to Top Packer: | 4480.00 ft | | | Final 70000.00 lb |
| Depth to Bottom Packer: | ft | | | |
| Interval between Packers: | 30.00 ft | | | |
| Tool Length: | 58.00 ft | | | |
| Number of Packers: | 2 | Diameter: 6.75 inches | | |

Tool Comments:

| Tool Description | Length (ft) | Serial No. | Position | Depth (ft) | Accum. Lengths |
|------------------|-------------|------------|----------|------------|----------------|
|------------------|-------------|------------|----------|------------|----------------|

| | | | | | |
|----------------|-------|------|---------|---------|-------------------------------|
| Shut In Tool | 5.00 | | | 4457.00 | |
| Hydraulic tool | 5.00 | | | 4462.00 | |
| Jars | 5.00 | | | 4467.00 | |
| Safety Joint | 3.00 | | | 4470.00 | |
| Packer - Shale | 0.00 | | | 4470.00 | |
| Packer | 5.00 | | | 4475.00 | 28.00 Bottom Of Top Packer |
| Packer | 5.00 | | | 4480.00 | |
| Stubb | 1.00 | | | 4481.00 | |
| Recorder | 0.00 | 6719 | Inside | 4481.00 | |
| Recorder | 0.00 | 8320 | Outside | 4481.00 | |
| Perforations | 26.00 | | | 4507.00 | |
| Bullnose | 3.00 | | | 4510.00 | 30.00 Bottom Packers & Anchor |

Total Tool Length: 58.00



**TRILOBITE
TESTING, INC.**

DRILL STEM TEST REPORT

FLUID SUMMARY

Murfin Drilling Co., Inc.
250 N Water Siute 300
Wichita, KS 67202
ATTN: Bob Stolzle

14-3s-36w Rawlins,KS
Poore #1-14
Job Ticket: 48246 **DST#: 3**
Test Start: 2012.10.16 @ 15:51:00

Mud and Cushion Information

| | | | |
|----------------------------------|----------------------------|-----------------|-----------|
| Mud Type: Gel Chem | Cushion Type: | Oil API: | deg API |
| Mud Weight: 9.00 lb/gal | Cushion Length: ft | Water Salinity: | 27000 ppm |
| Viscosity: 74.00 sec/qt | Cushion Volume: bbl | | |
| Water Loss: 5.97 in ³ | Gas Cushion Type: | | |
| Resistivity: ohm.m | Gas Cushion Pressure: psig | | |
| Salinity: 1000.00 ppm | | | |
| Filter Cake: 2.00 inches | | | |

Recovery Information

Recovery Table

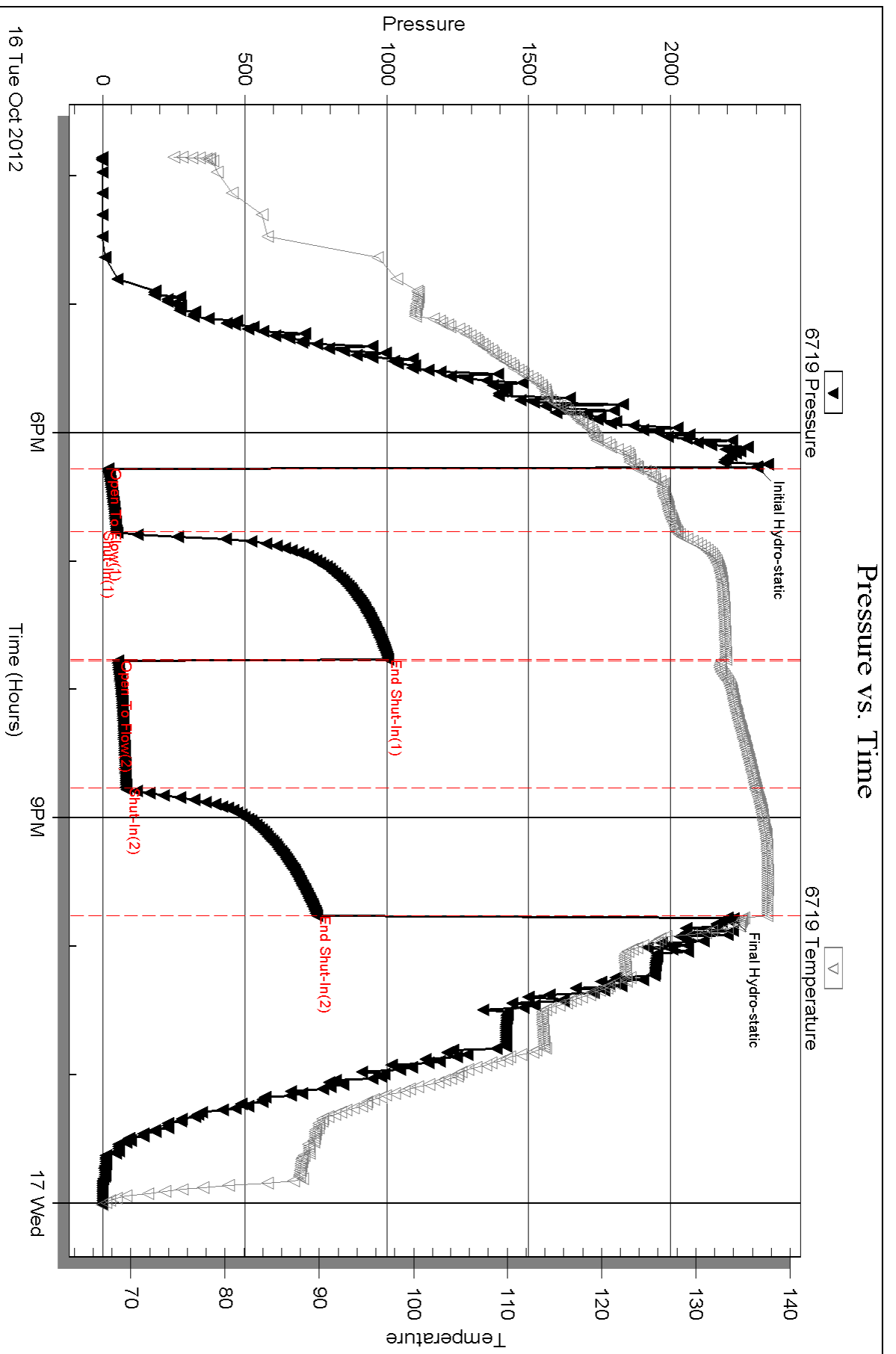
| Length ft | Description | Volume bbl |
|--------------|--|---------------|
| 150.00 | WM 52% _m , 48% _w | 0.738 |

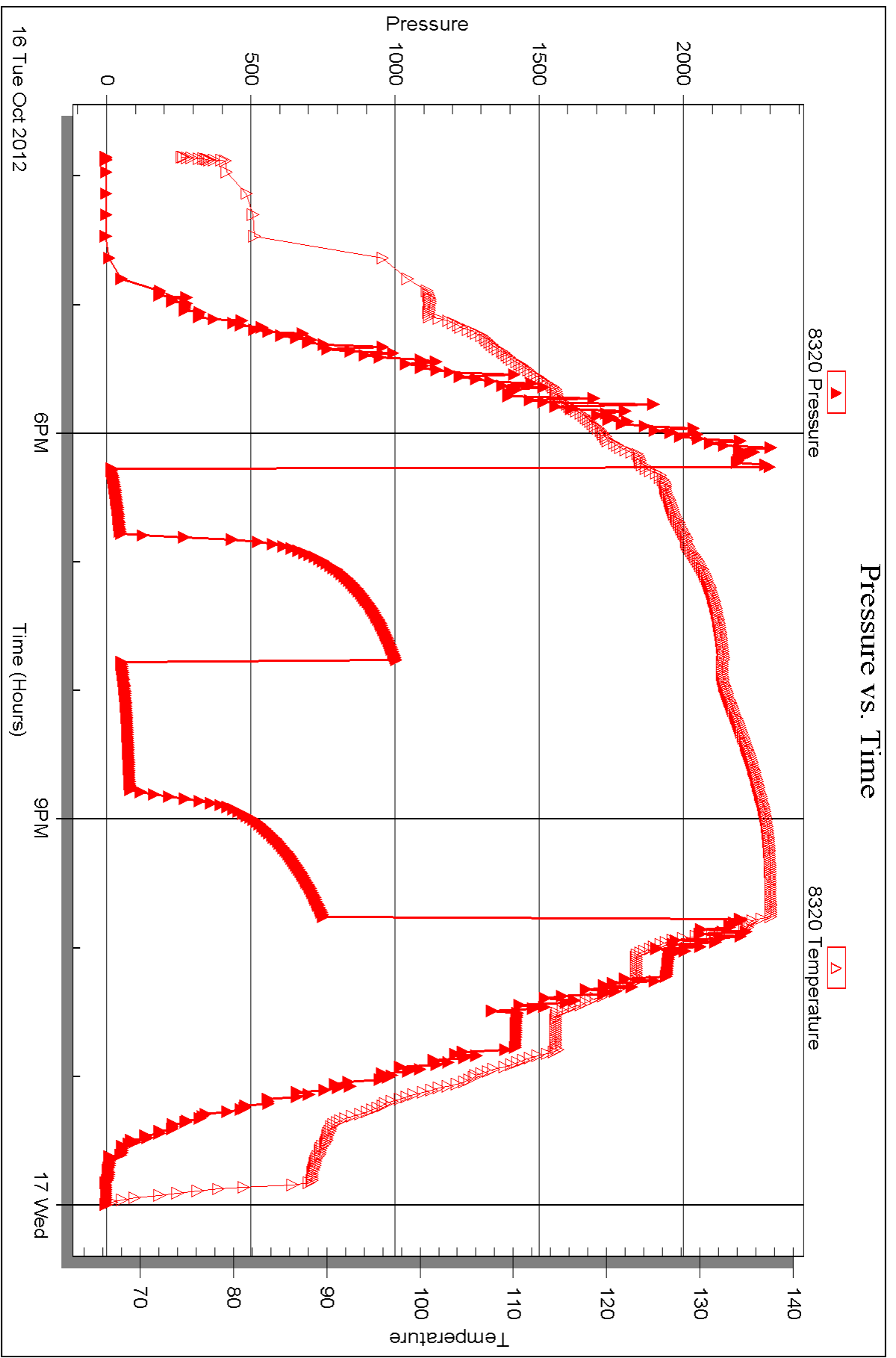
Total Length: 150.00 ft Total Volume: 0.738 bbl

Num Fluid Samples: 0 Num Gas Bombs: 0 Serial #:

Laboratory Name: Laboratory Location:

Recovery Comments: RW = .275 ohms @ 65.5 deg F







DRILL STEM TEST REPORT

Prepared For: **Murfin Drilling Co., Inc.**

250 N Water Siute 300
Wichita, KS 67202

ATTN: Bob Stolzle

Poore #1-14

14-3s-36w Rawlins,KS

Start Date: 2012.10.17 @ 19:42:00

End Date: 2012.10.18 @ 02:44:30

Job Ticket #: 48247 DST #: 4

Trilobite Testing, Inc
PO Box 362 Hays, KS 67601
ph: 785-625-4778 fax: 785-625-5620

Printed: 2012.10.23 @ 08:28:20

Murfin Drilling Co., Inc. 14-3s-36w Rawlins,KS Poore #1-14 DST # 4 Upper Pawnee 2012.10.17



TRILOBITE TESTING, INC.

DRILL STEM TEST REPORT

Murfin Drilling Co., Inc.
 250 N Water Siute 300
 Wichita, KS 67202
 ATTN: Bob Stolzle

14-3s-36w Rawlins,KS

Poore #1-14

Job Ticket: 48247

DST#: 4

Test Start: 2012.10.17 @ 19:42:00

GENERAL INFORMATION:

Formation: **Upper Pawnee**
 Deviated: No Whipstock: ft (KB)
 Time Tool Opened: 21:41:00
 Time Test Ended: 02:44:30
 Interval: **4596.00 ft (KB) To 4650.00 ft (KB) (TVD)**
 Total Depth: 4310.00 ft (KB) (TVD)
 Hole Diameter: 7.88 inches Hole Condition: Fair
 Test Type: Conventional Bottom Hole (Reset)
 Tester: James Winder
 Unit No: 57
 Reference Elevations: 3327.00 ft (KB)
 3317.00 ft (CF)
 KB to GR/CF: 10.00 ft

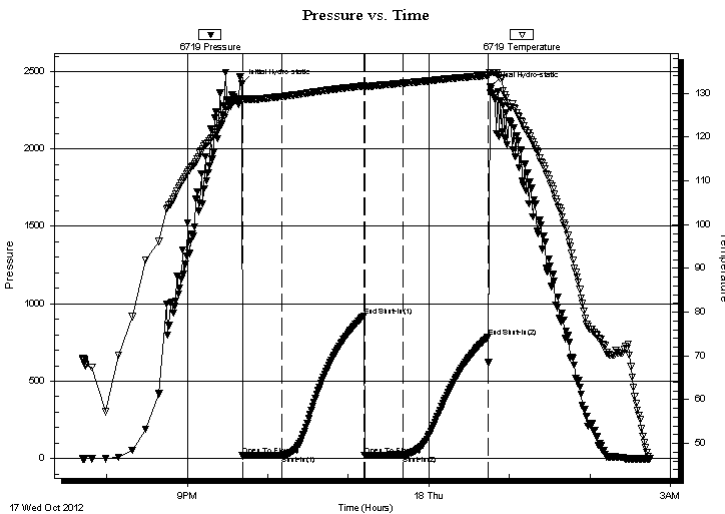
Serial #: 6719

Inside

Press @ Run Depth: 24.02 psig @ 4597.00 ft (KB) Capacity: 8000.00 psig
 Start Date: 2012.10.17 End Date: 2012.10.18 Last Calib.: 2012.10.18
 Start Time: 19:42:05 End Time: 02:44:29 Time On Btm: 2012.10.17 @ 21:40:30
 Time Off Btm: 2012.10.18 @ 00:46:00

TEST COMMENT: 30 - IF: Blow built to 1/2", dying back at 23 min., surface blow at close
 60 - IS: Bled off, No blow back
 30 - FF: No blow
 60 - FS: No blow back

PRESSURE SUMMARY



| Time (Min.) | Pressure (psig) | Temp (deg F) | Annotation |
|-------------|-----------------|--------------|----------------------|
| 0 | 2419.51 | 128.77 | Initial Hydro-static |
| 1 | 18.58 | 128.63 | Open To Flow (1) |
| 30 | 21.44 | 129.28 | Shut-In(1) |
| 91 | 921.24 | 131.70 | End Shut-In(1) |
| 92 | 21.91 | 131.49 | Open To Flow (2) |
| 121 | 24.02 | 132.33 | Shut-In(2) |
| 184 | 786.09 | 134.10 | End Shut-In(2) |
| 186 | 2402.58 | 134.80 | Final Hydro-static |

Recovery

| Length (ft) | Description | Volume (bbl) |
|-------------|------------------------|--------------|
| 5.00 | Mud w /trace oil 100%m | 0.02 |
| | | |
| | | |
| | | |

* Recovery from multiple tests

Gas Rates

| Choke (inches) | Pressure (psig) | Gas Rate (Mcf/d) |
|----------------|-----------------|------------------|
| | | |



**TRILOBITE
TESTING, INC.**

DRILL STEM TEST REPORT

TOOL DIAGRAM

Murfin Drilling Co., Inc.

14-3s-36w Rawlins,KS

250 N Water Siute 300
Wichita, KS 67202

Poore #1-14

Job Ticket: 48247

DST#: 4

ATTN: Bob Stolzle

Test Start: 2012.10.17 @ 19:42:00

Tool Information

| | | | | |
|---------------------------|--------------------|-----------------------|--------------------------------|------------------------------------|
| Drill Pipe: | Length: 4058.00 ft | Diameter: 3.80 inches | Volume: 56.92 bbl | Tool Weight: 2500.00 lb |
| Heavy Wt. Pipe: | Length: 0.00 ft | Diameter: 0.00 inches | Volume: 0.00 bbl | Weight set on Packer: 25000.00 lb |
| Drill Collar: | Length: 530.00 ft | Diameter: 2.25 inches | Volume: 2.61 bbl | Weight to Pull Loose: 82000.00 lb |
| | | | <u>Total Volume: 59.53 bbl</u> | Tool Chased 0.00 ft |
| Drill Pipe Above KB: | 20.00 ft | | | String Weight: Initial 70000.00 lb |
| Depth to Top Packer: | 4596.00 ft | | | Final 70000.00 lb |
| Depth to Bottom Packer: | ft | | | |
| Interval between Packers: | 54.00 ft | | | |
| Tool Length: | 82.00 ft | | | |
| Number of Packers: | 2 | Diameter: 6.75 inches | | |

Tool Comments:

Tool Description

| Tool Description | Length (ft) | Serial No. | Position | Depth (ft) | Accum. Lengths |
|------------------|-------------|------------|----------|------------|-------------------------------|
| Shut In Tool | 5.00 | | | 4573.00 | |
| Hydraulic tool | 5.00 | | | 4578.00 | |
| Jars | 5.00 | | | 4583.00 | |
| Safety Joint | 3.00 | | | 4586.00 | |
| Packer - Shale | 0.00 | | | 4586.00 | |
| Packer | 5.00 | | | 4591.00 | 28.00 Bottom Of Top Packer |
| Packer | 5.00 | | | 4596.00 | |
| Stubb | 1.00 | | | 4597.00 | |
| Recorder | 0.00 | 6719 | Inside | 4597.00 | |
| Recorder | 0.00 | 8320 | Outside | 4597.00 | |
| Perforations | 15.00 | | | 4612.00 | |
| Blank Spacing | 33.00 | | | 4645.00 | |
| Perforations | 2.00 | | | 4647.00 | |
| Bullnose | 3.00 | | | 4650.00 | 54.00 Bottom Packers & Anchor |

Total Tool Length: 82.00



**TRILOBITE
TESTING, INC.**

DRILL STEM TEST REPORT

FLUID SUMMARY

Murfin Drilling Co., Inc.
250 N Water Siute 300
Wichita, KS 67202
ATTN: Bob Stolzle

14-3s-36w Rawlins,KS
Poore #1-14
Job Ticket: 48247 **DST#: 4**
Test Start: 2012.10.17 @ 19:42:00

Mud and Cushion Information

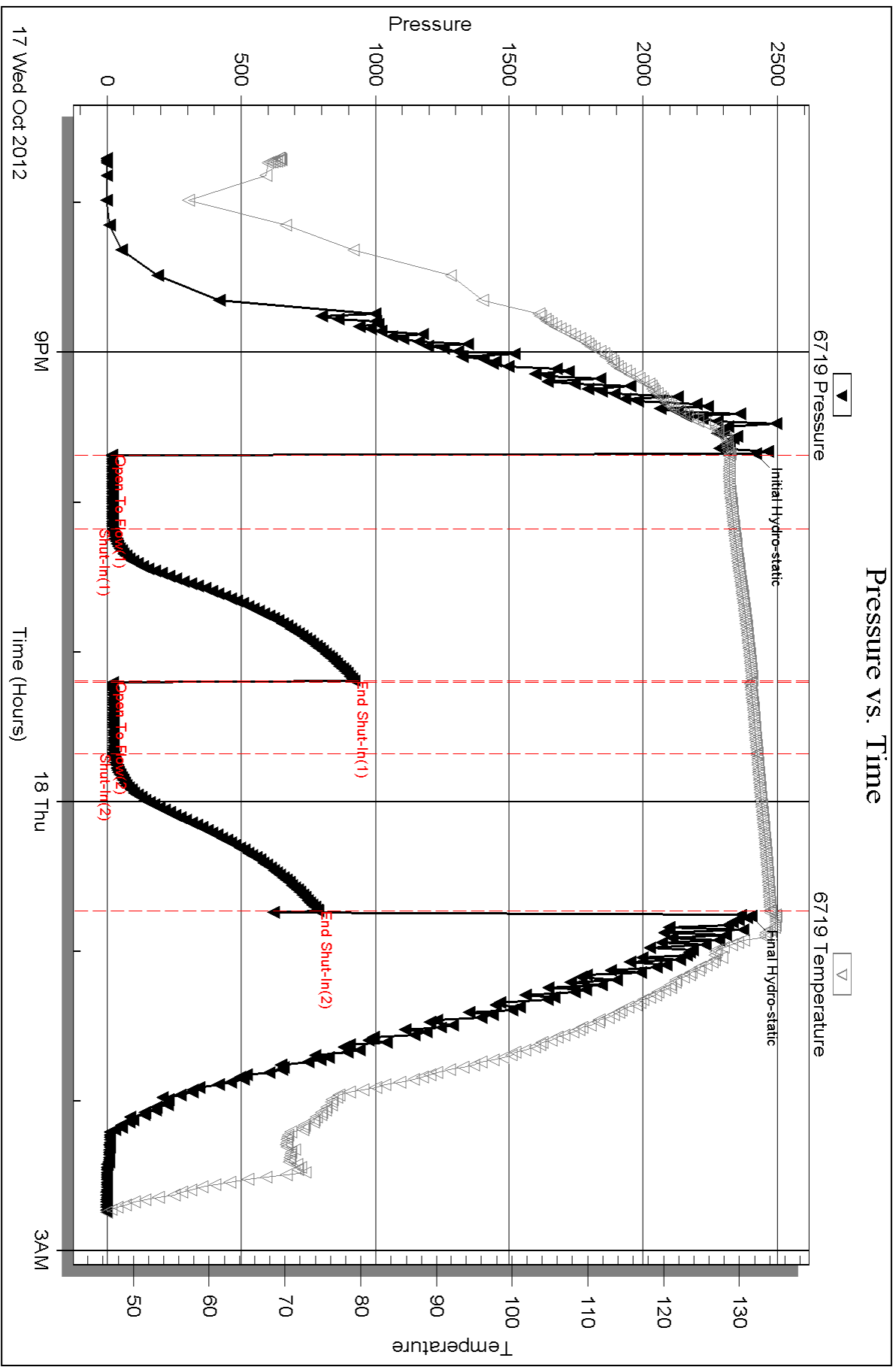
| | | | |
|----------------------------------|----------------------------|-----------------|---------|
| Mud Type: Gel Chem | Cushion Type: | Oil API: | deg API |
| Mud Weight: 9.00 lb/gal | Cushion Length: ft | Water Salinity: | ppm |
| Viscosity: 76.00 sec/qt | Cushion Volume: bbl | | |
| Water Loss: 5.98 in ³ | Gas Cushion Type: | | |
| Resistivity: ohm.m | Gas Cushion Pressure: psig | | |
| Salinity: 1000.00 ppm | | | |
| Filter Cake: 2.00 inches | | | |

Recovery Information

Recovery Table

| Length ft | Description | Volume bbl |
|--------------|------------------------|---------------|
| 5.00 | Mud w /trace oil 100%m | 0.025 |

Total Length: 5.00 ft Total Volume: 0.025 bbl
 Num Fluid Samples: 0 Num Gas Bombs: 0 Serial #:
 Laboratory Name: Laboratory Location:
 Recovery Comments:

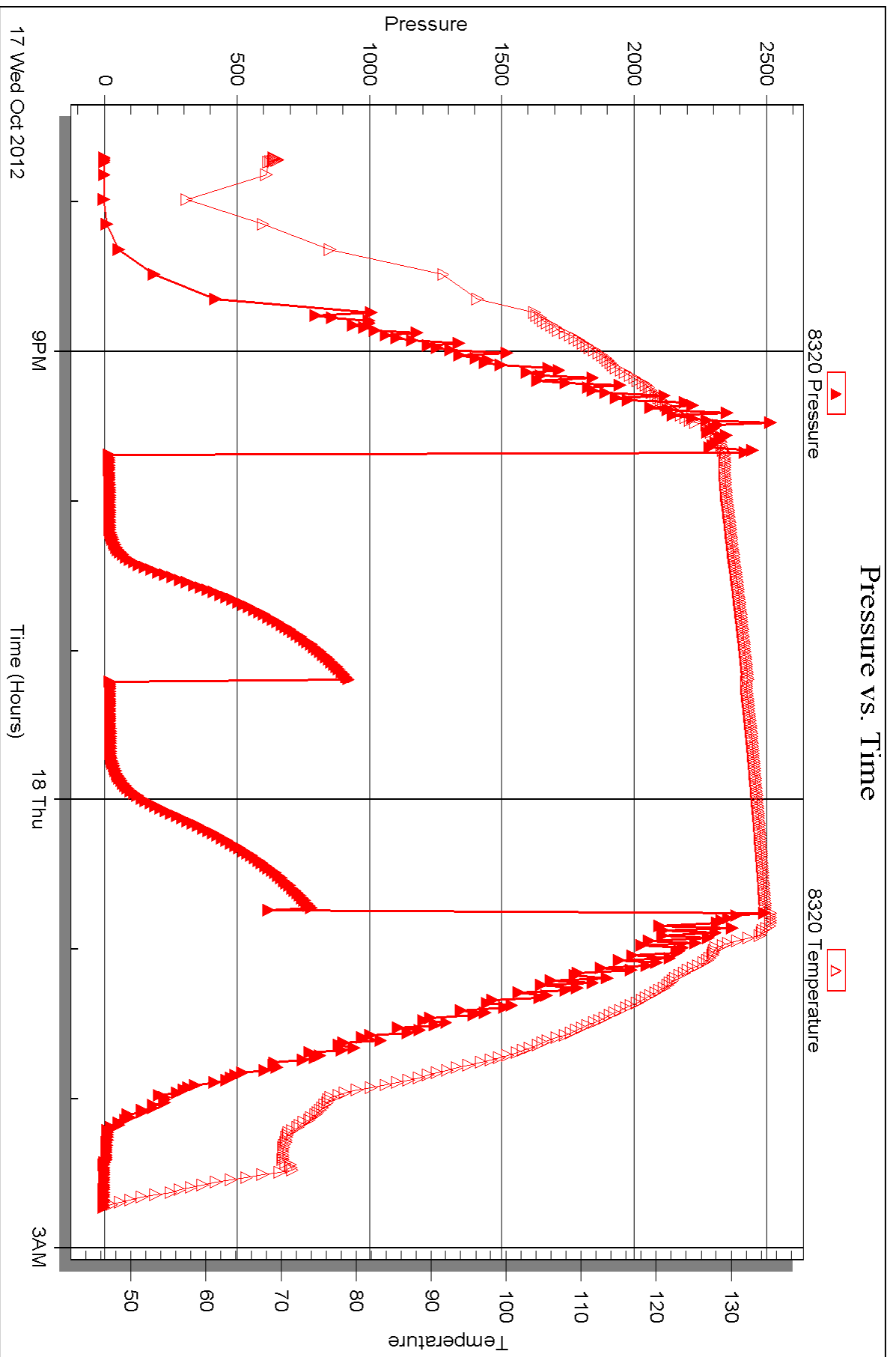


Serial #: 8320

Outside Murfin Drilling Co., Inc.

Poore #1-14

DST Test Number: 4





DRILL STEM TEST REPORT

Prepared For: **Murfin Drilling Co., Inc.**

250 N Water Siute 300
Wichita, KS 67202

ATTN: Bob Stolze

Poore #1-14

14-3s-36w Rawlins,KS

Start Date: 2012.10.18 @ 21:51:00

End Date: 2012.10.19 @ 07:38:30

Job Ticket #: 48248 DST #: 5

Trilobite Testing, Inc
PO Box 362 Hays, KS 67601
ph: 785-625-4778 fax: 785-625-5620

Printed: 2012.10.23 @ 08:23:44

Murfin Drilling Co., Inc.

14-3s-36w Rawlins,KS

Poore #1-14

DST # 5

Lwr Pawnee, Ft.Scott

2012.10.18



TRILOBITE TESTING, INC.

DRILL STEM TEST REPORT

Murfin Drilling Co., Inc.
 250 N Water Siute 300
 Wichita, KS 67202
 ATTN: Bob Stolzle

14-3s-36w Rawlins, KS

Poore #1-14

Job Ticket: 48248

DST#: 5

Test Start: 2012.10.18 @ 21:51:00

GENERAL INFORMATION:

Formation: **Lwr Pawnee, Ft. Scott**

Deviated: No Whipstock: ft (KB)

Time Tool Opened: 00:29:00

Time Test Ended: 07:38:30

Test Type: Conventional Bottom Hole (Reset)

Tester: James Winder

Unit No: 57

Interval: 4645.00 ft (KB) To 4740.00 ft (KB) (TVD)

Reference Elevations: 3327.00 ft (KB)

Total Depth: 4740.00 ft (KB) (TVD)

3317.00 ft (CF)

Hole Diameter: 7.88 inches Hole Condition: Fair

KB to GR/CF: 10.00 ft

Serial #: 6719

Inside

Press @ Run Depth: 58.73 psig @ 4646.00 ft (KB)

Capacity: 8000.00 psig

Start Date: 2012.10.18

End Date:

2012.10.19

Last Calib.:

2012.10.19

Start Time:

21:51:05

End Time:

07:38:30

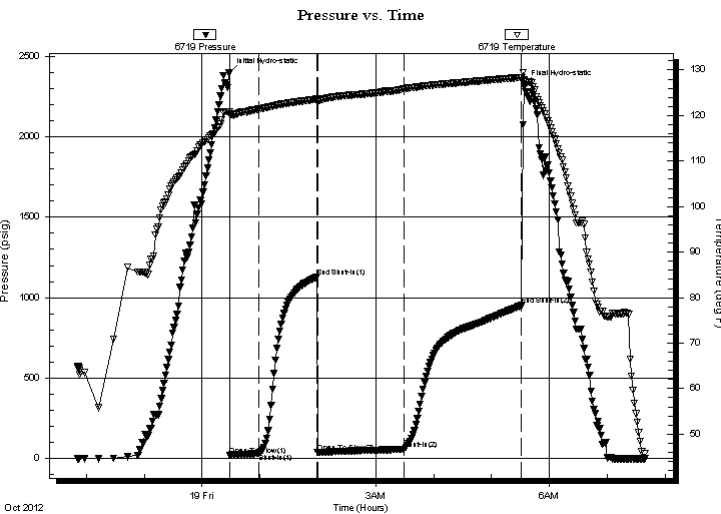
Time On Btm:

2012.10.19 @ 00:28:30

Time Off Btm:

2012.10.19 @ 05:33:30

TEST COMMENT: 30 - IF: Blow built to 2 1/4"
 60 - IS: Bled off, No blow back
 90 - FF: Blow built to 4 1/2"
 120 - FS: Bled off, No blow back



PRESSURE SUMMARY

| Time (Min.) | Pressure (psig) | Temp (deg F) | Annotation |
|-------------|-----------------|--------------|----------------------|
| 0 | 2399.91 | 120.80 | Initial Hydro-static |
| 1 | 21.58 | 120.36 | Open To Flow (1) |
| 31 | 32.26 | 121.44 | Shut-In(1) |
| 90 | 1126.57 | 123.58 | End Shut-In(1) |
| 91 | 37.40 | 123.13 | Open To Flow (2) |
| 181 | 58.73 | 125.90 | Shut-In(2) |
| 303 | 951.17 | 128.39 | End Shut-In(2) |
| 305 | 2323.63 | 127.81 | Final Hydro-static |

Recovery

| Length (ft) | Description | Volume (bbl) |
|-------------|---------------------|--------------|
| 70.00 | OCM 75%o, 22%o, 3%g | 0.34 |
| 20.00 | MCO 79%o, 20%o, 1%g | 0.10 |
| 0.00 | GIP = 90' | 0.00 |
| | | |
| | | |

* Recovery from multiple tests

Gas Rates

| | Choke (inches) | Pressure (psig) | Gas Rate (Mcf/d) |
|--|----------------|-----------------|------------------|
| | | | |



**TRILOBITE
TESTING, INC.**

DRILL STEM TEST REPORT

TOOL DIAGRAM

Murfin Drilling Co., Inc.
250 N Water Siute 300
Wichita, KS 67202
ATTN: Bob Stolzle

14-3s-36w Rawlins,KS
Poore #1-14
Job Ticket: 48248 **DST#: 5**
Test Start: 2012.10.18 @ 21:51:00

Tool Information

| | | | | |
|---------------------------|--------------------|-----------------------|--------------------------------|------------------------------------|
| Drill Pipe: | Length: 4091.00 ft | Diameter: 3.80 inches | Volume: 57.39 bbl | Tool Weight: 2500.00 lb |
| Heavy Wt. Pipe: | Length: 0.00 ft | Diameter: 0.00 inches | Volume: 0.00 bbl | Weight set on Packer: 25000.00 lb |
| Drill Collar: | Length: 530.00 ft | Diameter: 2.25 inches | Volume: 2.61 bbl | Weight to Pull Loose: 82000.00 lb |
| | | | <u>Total Volume: 60.00 bbl</u> | Tool Chased 0.00 ft |
| Drill Pipe Above KB: | 4.00 ft | | | String Weight: Initial 72000.00 lb |
| Depth to Top Packer: | 4645.00 ft | | | Final 73000.00 lb |
| Depth to Bottom Packer: | ft | | | |
| Interval between Packers: | 95.00 ft | | | |
| Tool Length: | 123.00 ft | | | |
| Number of Packers: | 2 | Diameter: 6.75 inches | | |

Tool Comments:

| Tool Description | Length (ft) | Serial No. | Position | Depth (ft) | Accum. Lengths |
|-------------------------|--------------------|-------------------|-----------------|-------------------|-----------------------|
|-------------------------|--------------------|-------------------|-----------------|-------------------|-----------------------|

| | | | | | |
|----------------|-------|------|---------|---------|------------------------------------|
| Shut In Tool | 5.00 | | | 4622.00 | |
| Hydraulic tool | 5.00 | | | 4627.00 | |
| Jars | 5.00 | | | 4632.00 | |
| Safety Joint | 3.00 | | | 4635.00 | |
| Packer - Shale | 0.00 | | | 4635.00 | |
| Packer | 5.00 | | | 4640.00 | 28.00 Bottom Of Top Packer |
| Packer | 5.00 | | | 4645.00 | |
| Stubb | 1.00 | | | 4646.00 | |
| Recorder | 0.00 | 6719 | Inside | 4646.00 | |
| Recorder | 0.00 | 8320 | Outside | 4646.00 | |
| Perforations | 20.00 | | | 4666.00 | |
| Blank Spacing | 64.00 | | | 4730.00 | |
| Perforations | 7.00 | | | 4737.00 | |
| Bullnose | 3.00 | | | 4740.00 | 95.00 Bottom Packers & Anchor |

Total Tool Length: 123.00



**TRILOBITE
TESTING, INC.**

DRILL STEM TEST REPORT

FLUID SUMMARY

Murfin Drilling Co., Inc.
250 N Water Siute 300
Wichita, KS 67202
ATTN: Bob Stolzle

14-3s-36w Rawlins,KS
Poore #1-14
Job Ticket: 48248 **DST#: 5**
Test Start: 2012.10.18 @ 21:51:00

Mud and Cushion Information

| | | |
|----------------------------------|----------------------------|-----------------------|
| Mud Type: Gel Chem | Cushion Type: | Oil API: 26.8 deg API |
| Mud Weight: 9.00 lb/gal | Cushion Length: ft | Water Salinity: ppm |
| Viscosity: 74.00 sec/qt | Cushion Volume: bbl | |
| Water Loss: 5.98 in ³ | Gas Cushion Type: | |
| Resistivity: ohm.m | Gas Cushion Pressure: psig | |
| Salinity: 900.00 ppm | | |
| Filter Cake: 2.00 inches | | |

Recovery Information

Recovery Table

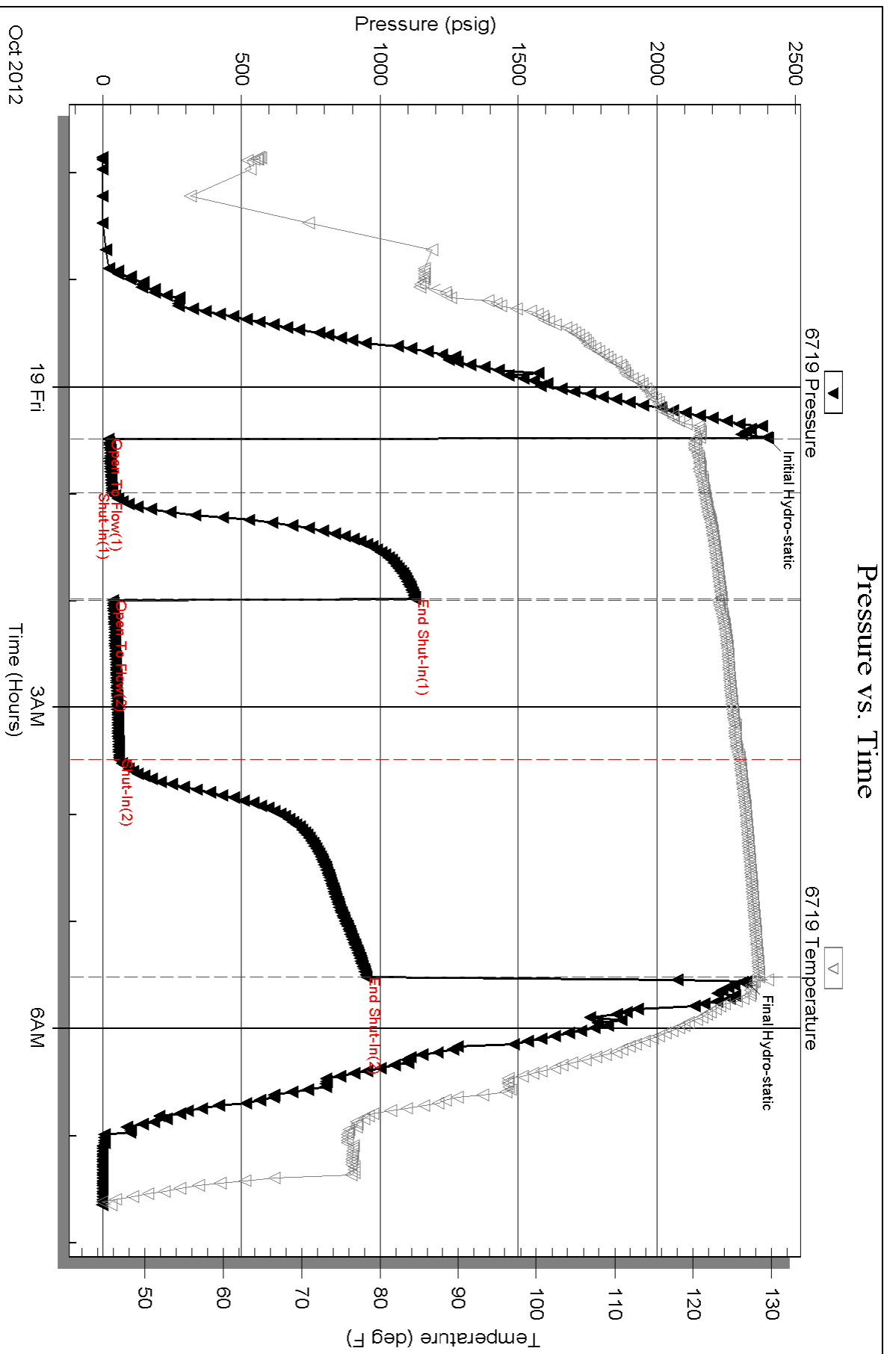
| Length ft | Description | Volume bbl |
|--------------|---|---------------|
| 70.00 | OCM 75% <i>m</i> , 22% <i>o</i> , 3% <i>g</i> | 0.344 |
| 20.00 | MCO 79% <i>o</i> , 20% <i>m</i> , 1% <i>g</i> | 0.098 |
| 0.00 | GIP = 90' | 0.000 |

Total Length: 90.00 ft Total Volume: 0.442 bbl

Num Fluid Samples: 0 Num Gas Bombs: 0 Serial #:

Laboratory Name: Laboratory Location:

Recovery Comments: Gravity = 24.8 api @ 40 deg F

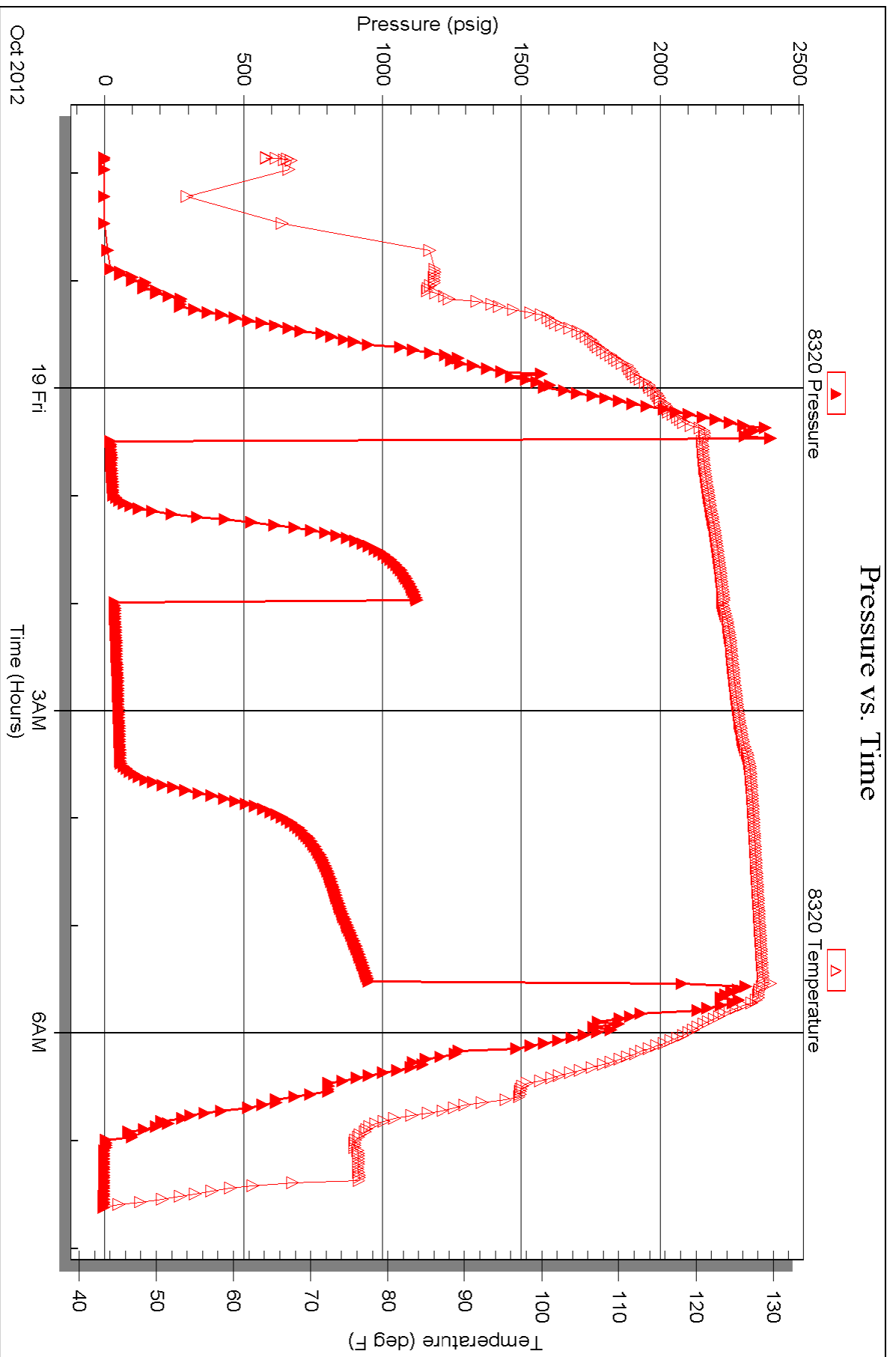


Serial #: 8320

Outside Murfin Drilling Co., Inc.

Poor #1-14

DST Test Number: 5



Triobite Testing, Inc

Ref. No: 48248

Printed: 2012.10.23 @ 08:23:49



TRILOBITE TESTING INC.

P.O. Box 1733 • Hays, Kansas 67601

Test Ticket

NO. 48244

Well Name & No. Poore #1-14 Test No. 1 Date 10-14-12
 Company Murfin Drilling Co. Inc Elevation 3327 KB 3317 GL
 Address 250 N. Water Suite 300 Wichita, KS 67202
 Co. Rep / Geo. Bob Stolzle Rig Murfin #14
 Location: Sec. 14 Twp. 3s Rge. 36w Co. Rawlins State KS

Interval Tested 4181-4310 Zone Tested Douglas - LKC "A-D"
 Anchor Length 129 Drill Pipe Run 3647 Mud Wt. 9.2
 Top Packer Depth 4176 Drill Collars Run 530 Vis 52
 Bottom Packer Depth 4181 Wt. Pipe Run - WL 6.4
 Total Depth 4310 Chlorides 1100 ppm System LCM 4
 Blow Description IF: 3" ^{surge} blow at open, built to 9 1/2"
ISI: Bled off, No blowback
FF: Blow started at 4 min., built to 9 3/4"
FSI: Bled off, No blowback

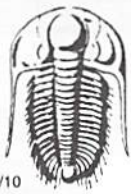
| Rec | Feet of | %gas | %oil | %water | %mud |
|--------------------|------------------|------|-------|--------|------|
| 440 352 | Mud w/trace oil | 5 | trace | - | 95 |
| 80 178 | SWCM w/trace oil | 7 | trace | 4 | 89 |
| Rec | Feet of | %gas | %oil | %water | %mud |
| Rec | Feet of | %gas | %oil | %water | %mud |
| Rec | Feet of | %gas | %oil | %water | %mud |

Rec Total 530 BHT 126 Gravity - API RW - @ - ° F Chlorides - ppm

| | | |
|-------------------------------------|---|---|
| (A) Initial Hydrostatic <u>2054</u> | <input type="checkbox"/> Test <u>*</u> 1250 | T-On Location <u>20:15</u> |
| (B) First Initial Flow <u>53</u> | <input type="checkbox"/> Jars <u>*</u> 250 | T-Started <u>22:46</u> |
| (C) First Final Flow <u>130</u> | <input type="checkbox"/> Safety Joint <u>*</u> 75 | T-Open <u>00:38</u> |
| (D) Initial Shut-In <u>1237</u> | <input checked="" type="checkbox"/> Circ Sub <u>NA</u> | T-Pulled <u>4:41</u> |
| (E) Second Initial Flow <u>134</u> | <input type="checkbox"/> Hourly Standby <u>20min</u> 25 | T-Out <u>6:35</u> |
| (F) Second Final Flow <u>269</u> | <input type="checkbox"/> Mileage <u>90RT</u> 139.50 | Comments <u>Tool slid 2' before opening - chased 5' to bottom hole lost 15' mud - 3" surge blow</u> |
| (G) Final Shut-In <u>1213</u> | <input checked="" type="checkbox"/> Sampler | <input checked="" type="checkbox"/> Ruined Shale Packer |
| (H) Final Hydrostatic <u>2021</u> | <input checked="" type="checkbox"/> Straddle | <input checked="" type="checkbox"/> Ruined Packer |
| Initial Open <u>30</u> | <input checked="" type="checkbox"/> Shale Packer | <input checked="" type="checkbox"/> Extra Copies |
| Initial Shut-In <u>60</u> | <input checked="" type="checkbox"/> Extra Packer | Sub Total <u>0</u> |
| Final Flow <u>60</u> | <input checked="" type="checkbox"/> Extra Recorder | Total <u>1739.50</u> |
| Final Shut-In <u>90</u> | <input checked="" type="checkbox"/> Day Standby | MP/DST Disc't |
| | <input checked="" type="checkbox"/> Accessibility | |
| | Sub Total <u>1739.50</u> | |

Approved By _____ Our Representative James Winder

Trilobite Testing Inc. shall not be liable for damaged of any kind of the property or personnel of the one for whom a test is made, or for any loss suffered or sustained, directly or indirectly, through the use of its equipment, or its statements or opinion concerning the results of any test, tools lost or damaged in the hole shall be paid for at cost by the party for whom the test is made.



TRILOBITE TESTING INC.

P.O. Box 1733 • Hays, Kansas 67601

Test Ticket

NO. 48245

Well Name & No. Poore #1-14 Test No. 2 Date 10-15-12
 Company Murfin Drilling Co. Inc Elevation 3327 KB 3317 GL
 Address 250 N. Water Suite 300 Wichita, KS 67202
 Co. Rep / Geo. Bob Stolzle Rig ~~Rawlins~~ Murfin #14
 Location: Sec. 14 Twp. 3S Rge. 36w Co. Rawlins State KS

Interval Tested 4401 - 4450 Zone Tested LKC "J"
 Anchor Length 49 Drill Pipe Run 3867 Mud Wt. 9.1
 Top Packer Depth 4396 (shale) Drill Collars Run 530 Vis 50
 Bottom Packer Depth 4401 Wt. Pipe Run - WL 6.4
 Total Depth 4450 Chlorides 1100 ppm System LCM 4
 Blow Description IF: Blow built to 1/4" then died back, dead at 27 min.
ISI: No blowback
FF: No blow
FSI: No blowback

| Rec | Feet of | %gas | %oil | %water | %mud |
|----------|------------|------|------|------------|------|
| <u>3</u> | <u>Mud</u> | | | <u>100</u> | |
| Rec | Feet of | %gas | %oil | %water | %mud |
| Rec | Feet of | %gas | %oil | %water | %mud |
| Rec | Feet of | %gas | %oil | %water | %mud |
| Rec | Feet of | %gas | %oil | %water | %mud |

Rec Total 3 BHT 127 Gravity - API RW - @ - ° F Chlorides - ppm

| | | |
|-------------------------------------|---|---|
| (A) Initial Hydrostatic <u>2177</u> | <input type="checkbox"/> Test <u>*</u> 1250 | T-On Location <u>21:50</u> |
| (B) First Initial Flow <u>17</u> | <input type="checkbox"/> Jars <u>*</u> 250 | T-Started <u>22:25</u> |
| (C) First Final Flow <u>19</u> | <input type="checkbox"/> Safety Joint <u>*</u> 75 | T-Open <u>00:17</u> |
| (D) Initial Shut-In <u>57</u> | <input checked="" type="checkbox"/> Circ Sub <u>*NA</u> | T-Pulled <u>3:19</u> |
| (E) Second Initial Flow <u>19</u> | <input checked="" type="checkbox"/> Hourly Standby | T-Out <u>5:10</u> |
| (F) Second Final Flow <u>20</u> | <input type="checkbox"/> Mileage <u>90RT</u> 139.50 | Comments |
| (G) Final Shut-In <u>39</u> | <input checked="" type="checkbox"/> Sampler | |
| (H) Final Hydrostatic <u>2157</u> | <input checked="" type="checkbox"/> Straddle | <input checked="" type="checkbox"/> Ruined Shale Packer |
| | <input type="checkbox"/> Shale Packer <u>*</u> 250 | <input checked="" type="checkbox"/> Ruined Packer |
| Initial Open <u>30</u> | <input checked="" type="checkbox"/> Extra Packer | <input checked="" type="checkbox"/> Extra Copies |
| Initial Shut-In <u>60</u> | <input checked="" type="checkbox"/> Extra Recorder | Sub Total <u>0</u> |
| Final Flow <u>30</u> | <input checked="" type="checkbox"/> Day Standby | Total <u>1964.50</u> |
| Final Shut-In <u>60</u> | <input checked="" type="checkbox"/> Accessibility | MP/DST Disc't |
| | Sub Total <u>1964.50</u> | |

Approved By _____ Our Representative James Winder

Trilobite Testing Inc. shall not be liable for damaged of any kind of the property or personnel of the one for whom a test is made, or for any loss suffered or sustained, directly or indirectly, through the use of its equipment, or its statements or opinion concerning the results of any test, tools lost or damaged in the hole shall be paid for at cost by the party for whom the test is made.



TRILOBITE TESTING INC.

P.O. Box 1733 • Hays, Kansas 67601

Test Ticket

NO. 48246

Well Name & No. Poore #1-14 Test No. 3 Date 10-16-12
 Company Murfin Drilling Co. Inc. Elevation 3327 KB 3317 GL
 Address 250 N. Water Suite 300 Wichita, KS 67202
 Co. Rep / Geo. Bob Stolzle Rig Murfin #14
 Location: Sec. 14 Twp. 3S Rge. 36W Co. Rawlins State KS

Interval Tested 4480 - 4510 Zone Tested Basal sd / Pleasanton
 Anchor Length 30 Drill Pipe Run 3931 Mud Wt. 9.1
 Top Packer Depth 4475 (shale) Drill Collars Run 530 Vis 74
 Bottom Packer Depth 4480 Wt. Pipe Run - WL 6.0
 Total Depth 4510 Chlorides 1000 ppm System LCM 4

Blow Description IF: Blow built to 3"
ISI: Bled off, No blowback
FF: Blow ~~started~~ started at 13 min., built to 1"
FST: Bled off, No blowback

| Rec | Feet of | %gas | %oil | %water | %mud |
|------------|-----------|----------|----------|-----------|-----------|
| <u>150</u> | <u>wm</u> | <u>-</u> | <u>-</u> | <u>48</u> | <u>52</u> |
| Rec | Feet of | %gas | %oil | %water | %mud |
| Rec | Feet of | %gas | %oil | %water | %mud |
| Rec | Feet of | %gas | %oil | %water | %mud |
| Rec | Feet of | %gas | %oil | %water | %mud |

Rec Total 150 BHT 138 Gravity - API RW 275 @ 65.5 °F Chlorides 27,000 ppm

(A) Initial Hydrostatic 2306
 (B) First Initial Flow 19
 (C) First Final Flow 49
 (D) Initial Shut-In 1004
 (E) Second Initial Flow 53
 (F) Second Final Flow 83
 (G) Final Shut-In 753
 (H) Final Hydrostatic 2219

- Test * 1250
 - Jars * 250
 - Safety Joint * 75
 - Circ Sub ANA
 - Hourly Standby
 - Mileage GORT 139.50
 - Sampler
 - Straddle
 - Shale Packer * 250
 - Extra Packer
 - Extra Recorder
 - Day Standby
 - Accessibility
- Sub Total 1964.50

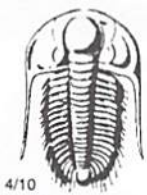
T-On Location 15:15
 T-Started 15:51
 T-Open 18:16
 T-Pulled 21:45
 T-Out 23:55

Comments _____
 Ruined Shale Packer
 Ruined Packer
 Extra Copies
 Sub Total 0
 Total 1964.50
 MP/DST Disc't _____

Initial Open 30
 Initial Shut-In 60
 Final Flow 60
 Final Shut-In 60

Approved By _____ Our Representative James Winder

Trilobite Testing Inc. shall not be liable for damaged of any kind of the property or personnel of the one for whom a test is made, or for any loss suffered or sustained, directly or indirectly, through the use of its equipment, or its statements or opinion concerning the results of any test, tools lost or damaged in the hole shall be paid for at cost by the party for whom the test is made.



TRILOBITE TESTING INC.

P.O. Box 1733 • Hays, Kansas 67601

Test Ticket

NO. 48247

Well Name & No. Poore #1-14 Test No. 4 Date 10-17-12
 Company Murfin Drilling Co. Inc Elevation 3327 KB 3317 GL
 Address 250 N. Water Suite 300 Wichita, KS 67202
 Co. Rep / Geo. Bob Stolze Rig Murfin #14
 Location: Sec. 14 Twp. 3s Rge. 36w Co. Rawlins State KS

Interval Tested 4596 - 4650 Zone Tested Upper Pawnee
 Anchor Length 54 Drill Pipe Run 4058 Mud Wt. 9.2
 Top Packer Depth 4591 (shale) Drill Collars Run 530 Vis 76
 Bottom Packer Depth 4596 Wt. Pipe Run - WL 6.0
 Total Depth 4650 Chlorides 1000 ppm System LCM 3

Blow Description IF: Blow built to 1/2", dieing back at 23min., surface blow at close
ISI: Bled off, No blowback
FF: No blow
FSI: No blowback

| Rec | Feet of | %gas | %oil | %water | %mud |
|----------|------------------------|--------------|------|------------|------|
| <u>5</u> | <u>Mud w/trace oil</u> | <u>trace</u> | | <u>100</u> | |
| Rec | Feet of | %gas | %oil | %water | %mud |
| Rec | Feet of | %gas | %oil | %water | %mud |
| Rec | Feet of | %gas | %oil | %water | %mud |
| Rec | Feet of | %gas | %oil | %water | %mud |

Rec Total 5 BHT 134 Gravity - API RW - @ - °F Chlorides - ppm

(A) Initial Hydrostatic 2420
 (B) First Initial Flow 19
 (C) First Final Flow 21
 (D) Initial Shut-In 921
 (E) Second Initial Flow 22
 (F) Second Final Flow 24
 (G) Final Shut-In 786
 (H) Final Hydrostatic 2403

- Test * 1250
- Jars * 250
- Safety Joint * 75
- Circ Sub *NA
- Hourly Standby
- Mileage 90RTx2 279
- Sampler
- Straddle
- Shale Packer * 250
- Extra Packer
- Extra Recorder
- Day Standby
- Accessibility
- Sub Total 2104

T-On Location 14:30/19:40
 T-Started 19:42
 T-Open 21:41
 T-Pulled 00:44
 T-Out 2:40

Comments Rig waited for wind to go down 15:15 - said I could go home to wait
 Ruined Shale Packer
 Ruined Packer
 Extra Copies
 Sub Total 0
 Total 2104
 MP/DST Disc't

Initial Open 30
 Initial Shut-In 60
 Final Flow 30
 Final Shut-In 60

Approved By _____ Our Representative James Winder

Trilobite Testing Inc. shall not be liable for damaged of any kind of the property or personnel of the one for whom a test is made, or for any loss suffered or sustained, directly or indirectly, through the use of its equipment, or its statements or opinion concerning the results of any test, tools lost or damaged in the hole shall be paid for at cost by the party for whom the test is made.



TRILOBITE TESTING INC.

P.O. Box 1733 • Hays, Kansas 67601

Test Ticket

NO. 48248

Well Name & No. Poore #1-14 Test No. 5 Date 10-18-12
 Company Murfin Drilling Co. Inc Elevation 3327 KB 3317 GL
 Address 250 N. Water Suite 300 Wichita, KS 67202
 Co. Rep / Geo. Bob Stolzle Rig Murfin #14
 Location: Sec. 14 Twp. 3s Rge. 36w Co. Rawlins State KS

Interval Tested 4645 - 4740 Zone Tested Lower Pawnee, Ft. Scott, Cherokee
 Anchor Length 95 Drill Pipe Run 4091 Mud Wt. 9.1
 Top Packer Depth 4640 (shale) Drill Collars Run 530 Vis 74
 Bottom Packer Depth 4645 Wt. Pipe Run - WL 6.0
 Total Depth 4740 Chlorides 900 ppm System LCM 4
 Blow Description IF: Blow built to 2 1/4"
ISI: Bled off, No blowback
FF: Blow built to 4 1/2"
FST: Bled off, No blowback

| Rec | Feet of | %gas | %oil | %water | %mud |
|-----------|------------------|----------|-----------|----------|-----------|
| <u>20</u> | <u>MCO</u> | <u>1</u> | <u>79</u> | <u>-</u> | <u>20</u> |
| <u>70</u> | <u>OCM</u> | <u>3</u> | <u>22</u> | <u>-</u> | <u>75</u> |
| | <u>GIP = 90'</u> | | | | |
| | | | | | |
| | | | | | |

Rec Total 90 BHT _____ Gravity 26.8 API RW - @ - ° F Chlorides - ppm

| | | |
|-------------------------------------|--|---|
| (A) Initial Hydrostatic <u>2400</u> | <input type="checkbox"/> Test <u>*</u> 1250 | T-On Location <u>21:15</u> |
| (B) First Initial Flow <u>22</u> | <input type="checkbox"/> Jars <u>*</u> 250 | T-Started <u>21:51</u> |
| (C) First Final Flow <u>32</u> | <input type="checkbox"/> Safety Joint <u>*</u> 75 | T-Open <u>00:29</u> |
| (D) Initial Shut-In <u>1127</u> | <input checked="" type="checkbox"/> Circ Sub <u>ANA</u> | T-Pulled <u>5:31</u> |
| (E) Second Initial Flow <u>37</u> | <input type="checkbox"/> Hourly Standby <u>4hr</u> 25 | T-Out <u>7:30</u> |
| (F) Second Final Flow <u>59</u> | <input type="checkbox"/> Mileage <u>90RT</u> 139.50 | Comments _____ |
| (G) Final Shut-In <u>951</u> | <input checked="" type="checkbox"/> Sampler _____ | _____ |
| (H) Final Hydrostatic <u>2324</u> | <input checked="" type="checkbox"/> Straddle _____ | <input checked="" type="checkbox"/> Ruined Shale Packer _____ |
| | <input type="checkbox"/> Shale Packer <u>*</u> 250 | <input checked="" type="checkbox"/> Ruined Packer _____ |
| Initial Open <u>30</u> | <input checked="" type="checkbox"/> Extra Packer _____ | <input checked="" type="checkbox"/> Extra Copies _____ |
| Initial Shut-In <u>60</u> | <input checked="" type="checkbox"/> Extra Recorder _____ | Sub Total <u>0</u> |
| Final Flow <u>90</u> | <input checked="" type="checkbox"/> Day Standby _____ | Total <u>1989.50</u> |
| Final Shut-In <u>120</u> | <input checked="" type="checkbox"/> Accessibility _____ | MP/DST Disc't _____ |
| | Sub Total <u>1989.50</u> | |

Approved By _____ Our Representative James Winder

Trilobite Testing Inc. shall not be liable for damaged of any kind of the property or personnel of the one for whom a test is made, or for any loss suffered or sustained, directly or indirectly, through the use of its equipment, or its statements or opinion concerning the results of any test, tools lost or damaged in the hole shall be paid for at cost by the party for whom the test is made.



PO Box 93999
Southlake, TX 76092

Voice: (817) 546-7282
Fax: (817) 246-3361

INVOICE

*acct
Prod - Litzl*

Invoice Number: 1331 15
Invoice Date: Oct 10, 2012
Page: 1



Bill To:
Murfin Drlg. Co., Inc.
250 N. Water
STE #300
Wichita, KS 67202

| Customer ID | Well Name/# or Customer P.O. | Payment Terms | |
|--------------|------------------------------|---------------|----------|
| Murfin | Poore #1-14 | Net 30 Days | |
| Job Location | Camp Location | Service Date | Due Date |
| KS1-01 | Oakley | Oct 10, 2012 | 11/9/12 |

| Quantity | Item | Description | Unit Price | Amount |
|----------|-------------|---------------------------|------------|----------|
| 350.00 | MAT | Class A Common | 17.90 | 6,265.00 |
| 12.00 | MAT | Chloride | 64.00 | 768.00 |
| 367.50 | SER | Cubic Feet | 2.48 | 911.40 |
| 1,185.80 | SER | Ton Mileage | 2.60 | 3,083.08 |
| 1.00 | SER | Surface | 1,512.25 | 1,512.25 |
| 70.00 | SER | Pump Truck Mileage | 7.70 | 539.00 |
| 1.00 | SER | Manifold Head Rental | 275.00 | 275.00 |
| 70.00 | SER | Light Vehicle Mileage | 4.40 | 308.00 |
| 1.00 | EQP | 8.5/8 Wooden Surface Plug | 107.64 | 107.64 |
| 1.00 | CEMENTER | Darren Racette | | |
| 1.00 | EQUIP OPER | Tyler Flipse | | |
| 1.00 | OPER ASSIST | David Scariano | | |

OKD

ALL PRICES ARE NET, PAYABLE
30 DAYS FOLLOWING DATE OF
INVOICE. 1 1/2% CHARGED
THEREAFTER. IF ACCOUNT IS
CURRENT, TAKE DISCOUNT OF

\$ 5094.66

ONLY IF PAID ON OR BEFORE

Nov 4, 2012

| | |
|------------------------|------------------|
| Subtotal | 13,769.37 |
| Sales Tax | 574.82 |
| Total Invoice Amount | 14,344.19 |
| Payment/Credit Applied | |
| TOTAL | 14,344.19 |

ALLIED OIL & GAS SERVICES, LLC 058931

Federal Tax I.D.# 20-5975804

REMIT TO P.O. BOX 93999
SOUTHLAKE, TEXAS 76092

SERVICE POINT
Oakley
10-11-12

| | | | | | | | |
|-------------------------|--------------------|--|-----------------|----------------|-----------------------|--------------------------|---------------------------|
| DATE <u>10-10-12</u> | SEC <u>14</u> | TWP <u>3</u> | RANGE <u>36</u> | CALLED OUT | ON LOCATION | JOB START <u>3:30 AM</u> | JOB FINISH <u>4:00 AM</u> |
| LEASE <u>Poore</u> | WELL # <u>1-14</u> | LOCATION <u>McDonald E To Rd 5-N-1</u> | | | COUNTY <u>Randall</u> | STATE <u>Ks.</u> | |
| OLD OR NEW (Circle one) | | | | <u>SG into</u> | | | |

CONTRACTOR Murfin #14

TYPE OF JOB Surface

HOLE SIZE 12 1/4 T.D. 402'

CASING SIZE 8 3/8 DEPTH 402.72'

TUBING SIZE DEPTH

DRILL PIPE DEPTH

TOOL DEPTH

PRES. MAX MINIMUM

MEAS. LINE SHOE JOINT

CEMENT LEFT IN CSG. 15'

PERFS.

DISPLACEMENT 24.81

OWNER Same

CEMENT

AMOUNT ORDERED 350 SKs Com 8% CC

COMMON 350 SKs @ \$17.99 \$6265.00

POZMIX @

OIL @

CHLORIDE 12 SKs @ \$64.00 \$768.00

ASC @

EQUIPMENT

PUMP TRUCK CEMENTER Damen Racette 1

423-281 HELPER Tyler Flipse 1

BULK TRUCK

396-206 DRIVER David Scarlano 3

BULK TRUCK

DRIVER

HANDLING 367.5⁰⁰ x @ \$2.48 \$911.40

MILEAGE 16.94 x 70 x @ \$2.60 \$3089.02

TOTAL \$1185.80

REMARKS:

Mix 350 SKs Cement

Displace with water

Cement Did Circulate

SERVICE

DEPTH OF JOB \$402.72

PUMP TRUCK CHARGE @ \$1512.35

EXTRA FOOTAGE @

MILEAGE 70 @ \$7.70 \$539.00

MANIFOLD Hand @ \$275.00

L.V. mileage @ \$4.40 \$308.00

Thank You.

CHARGE TO: Murfin

STREET

CITY STATE ZIP

TOTAL \$2634.35

PLUG & FLOAT EQUIPMENT

1 Wooden Surface Plug @ \$107.64

@

@

@

TOTAL \$107.64

To: Allied Oil & Gas Services, LLC.

You are hereby requested to rent cementing equipment and furnish cementer and helper(s) to assist owner or contractor to do work as is listed. The above work was done to satisfaction and supervision of owner agent or contractor. I have read and understand the "GENERAL TERMS AND CONDITIONS" listed on the reverse side.

SALES TAX (if Any) 574.82

TOTAL CHARGES 13769.37

DISCOUNT 5094.66 IF PAID IN 30 DAYS

PRINTED NAME Craig Murfin

SIGNATURE [Signature]

3790



PO Box 93999
Southlake, TX 76092

Voice: (817) 546-7282
Fax: (817) 246-3361

INVOICE

Invoice Number: 133221
Invoice Date: Oct 20, 2012
Page: 1

*acct.
Prod-LizH*



| |
|---|
| Bill To: |
| Murfin Drlg. Co., Inc. 250 N. Water STE #300 Wichita, KS 67202 |

| Customer ID | Well Name/# or Customer P.O. | Payment Terms | |
|--------------|------------------------------|---------------|----------|
| Murfin | Poore #1-14 | Net 30 Days | |
| Job Location | Camp Location | Service Date | Due Date |
| KS1-03 | Oakley | Oct 20, 2012 | 11/19/12 |

| Quantity | Item | Description | Unit Price | Amount |
|----------|-------------|-----------------------|------------|----------|
| 132.00 | MAT | Class A Common | 17.90 | 2,362.80 |
| 88.00 | MAT | Pozmix | 9.35 | 822.80 |
| 8.00 | MAT | Gel | 23.40 | 187.20 |
| 55.00 | MAT | Flo Seal | 2.97 | 163.35 |
| 236.29 | SER | Cubic Feet | 2.48 | 586.00 |
| 690.90 | SER | Ton Mileage | 2.60 | 1,796.34 |
| 1.00 | SER | Plug to Abandon | 2,600.47 | 2,600.47 |
| 70.00 | SER | Pump Truck Mileage | 7.70 | 539.00 |
| 70.00 | SER | Light Vehicle Mileage | 4.40 | 308.00 |
| 1.00 | EQP | 8.5/8 Top Wooden Plug | 107.64 | 107.64 |
| 1.00 | CEMENTER | Darren Racette | | |
| 1.00 | EQUIP OPER | Tyler Flipse | | |
| 1.00 | OPER ASSIST | Paul Beaver | | |

| | |
|------------------------|------------------|
| Subtotal | 9,473.60 |
| Sales Tax | 762.62 |
| Total Invoice Amount | 10,236.22 |
| Payment/Credit Applied | |
| TOTAL | 10,236.22 |

ALL PRICES ARE NET, PAYABLE 30 DAYS FOLLOWING DATE OF INVOICE. 1 1/2% CHARGED THEREAFTER. IF ACCOUNT IS CURRENT, TAKE DISCOUNT OF

\$2936.81

ONLY IF PAID ON OR BEFORE
Nov 14, 2012

DD

