

## DRILL STEM TEST REPORT

Prepared For: **Samuel Gary Jr. & Associates, Inc.**

1515 Wynkoop Ste. #700  
Denver, CO 80202

ATTN: Tom Fertal

### **Koirth #1-35**

#### **35-14s-18w Ellis,KS**

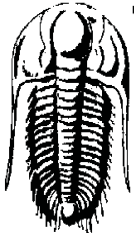
Start Date: 2012.09.16 @ 16:20:15

End Date: 2012.09.16 @ 22:25:45

Job Ticket #: 47929                      DST #: 1

Trilobite Testing, Inc  
PO Box 362 Hays, KS 67601  
ph: 785-625-4778 fax: 785-625-5620

Printed: 2012.09.27 @ 13:37:04



**TRILOBITE TESTING, INC**

# DRILL STEM TEST REPORT

Samuel Gary Jr. & Associates, Inc.

**35-14s-18w Ellis,KS**

1515 Wynkoop Ste. #700  
Denver, CO 80202

**Koirth #1-35**

Job Ticket: 47929

**DST#: 1**

ATTN: Tom Fertal

Test Start: 2012.09.16 @ 16:20:15

## GENERAL INFORMATION:

Formation: **LKC "C&D"**

Deviated: No Whipstock: ft (KB)

Time Tool Opened: 17:53:35

Time Test Ended: 22:25:45

Test Type: Conventional Bottom Hole (Initial)

Tester: Dustin Rash

Unit No: 38

**Interval: 3313.00 ft (KB) To 3363.00 ft (KB) (TVD)**

Reference Elevations: 2030.00 ft (KB)

Total Depth: 3363.00 ft (KB) (TVD)

2022.00 ft (CF)

Hole Diameter: 7.88 inches Hole Condition: Fair

KB to GR/CF: 8.00 ft

**Serial #: 8354**

**Inside**

Press@RunDepth: 25.48 psig @ 3317.00 ft (KB)

Capacity: 8000.00 psig

Start Date: 2012.09.16

End Date: 2012.09.16

Last Calib.: 2012.09.16

Start Time: 16:30:15

End Time: 22:25:45

Time On Btm: 2012.09.16 @ 17:53:25

Time Off Btm: 2012.09.16 @ 20:40:15

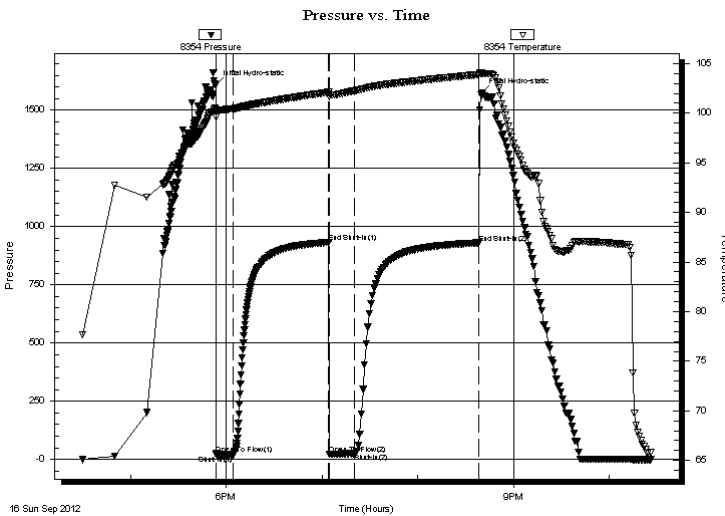
**TEST COMMENT:** IF-Very weak surface blow.

ISI-No Return.

FF-No Blow.

FSI-No Return. Flow times- 10-60-15-75

## PRESSURE SUMMARY



Time (Min.)	Pressure (psig)	Temp (deg F)	Annotation
0	1610.11	100.58	Initial Hydro-static
1	24.52	99.59	Open To Flow (1)
11	19.90	100.46	Shut-In(1)
71	932.10	102.11	End Shut-In(1)
72	22.97	101.65	Open To Flow (2)
87	25.48	102.26	Shut-In(2)
165	930.20	103.90	End Shut-In(2)
167	1575.79	104.01	Final Hydro-static

## Recovery

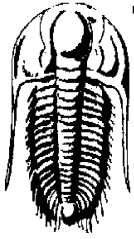
## Gas Rates

Length (ft)	Description	Volume (bbl)
10.00	100%Mud	0.05

	Choke (inches)	Pressure (psig)	Gas Rate (Mcf/d)







**TRILOBITE  
TESTING, INC**

# DRILL STEM TEST REPORT

**TOOL DIAGRAM**

Samuel Gary Jr. & Associates, Inc.

**35-14s-18w Ellis,KS**

1515 Wynkoop Ste. #700  
Denver, CO 80202

**Koirth #1-35**

Job Ticket: 47929

**DST#: 1**

ATTN: Tom Fertal

Test Start: 2012.09.16 @ 16:20:15

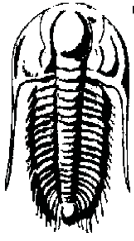
## Tool Information

Drill Pipe:	Length: 3257.00 ft	Diameter: 3.80 inches	Volume: 45.69 bbl	Tool Weight:	3000.00 lb
Heavy Wt. Pipe:	Length: 0.00 ft	Diameter: 2.70 inches	Volume: 0.00 bbl	Weight set on Packer:	24000.00 lb
Drill Collar:	Length: 31.00 ft	Diameter: 2.25 inches	Volume: 0.15 bbl	Weight to Pull Loose:	5000.00 lb
			<u>Total Volume: 45.84 bbl</u>	Tool Chased	0.00 ft
Drill Pipe Above KB:	5.00 ft			String Weight: Initial	47000.00 lb
Depth to Top Packer:	3313.00 ft			Final	47000.00 lb
Depth to Bottom Packer:	ft				
Interval between Packers:	50.00 ft				
Tool Length:	80.00 ft				
Number of Packers:	2	Diameter: 6.75 inches			

Tool Comments: Sampler- 2000ML- 100%Mud  
Pressure- 200#

Tool Description	Length (ft)	Serial No.	Position	Depth (ft)	Accum. Lengths
Recorder	0.00	8653	Fluid	3283.00	
Change Over Sub	1.00			3284.00	
Shut In Tool	5.00			3289.00	
Sampler	2.00			3291.00	
Hydraulic tool	5.00			3296.00	
Jars	5.00			3301.00	
Safety Joint	3.00			3304.00	
Packer	5.00			3309.00	30.00 Bottom Of Top Packer
Packer	4.00			3313.00	
Stubb	1.00			3314.00	
Perforations	3.00			3317.00	
Recorder	0.00	8354	Inside	3317.00	
Recorder	0.00	8520	Outside	3317.00	
Change Over Sub	1.00			3318.00	
Drill Pipe	31.00			3349.00	
Change Over Sub	1.00			3350.00	
Perforations	10.00			3360.00	
Bullnose	3.00			3363.00	50.00 Bottom Packers & Anchor

**Total Tool Length: 80.00**



**TRILOBITE  
TESTING, INC**

# DRILL STEM TEST REPORT

**FLUID SUMMARY**

Samuel Gary Jr. & Associates, Inc.

**35-14s-18w Ellis,KS**

1515 Wynkoop Ste. #700  
Denver, CO 80202

**Koirth #1-35**

Job Ticket: 47929

**DST#: 1**

ATTN: Tom Fertal

Test Start: 2012.09.16 @ 16:20:15

## Mud and Cushion Information

Mud Type: Gel Chem

Cushion Type:

Oil API:

deg API

Mud Weight: 9.00 lb/gal

Cushion Length: ft

Water Salinity: ppm

Viscosity: 45.00 sec/qt

Cushion Volume: bbl

Water Loss: 9.57 in<sup>3</sup>

Gas Cushion Type:

Resistivity: ohm.m

Gas Cushion Pressure: psig

Salinity: 3000.00 ppm

Filter Cake: inches

## Recovery Information

Recovery Table

Length ft	Description	Volume bbl
10.00	100%Mud	0.049

Total Length: 10.00 ft      Total Volume: 0.049 bbl

Num Fluid Samples: 0

Num Gas Bombs: 0

Serial #:

Laboratory Name:

Laboratory Location:

Recovery Comments:

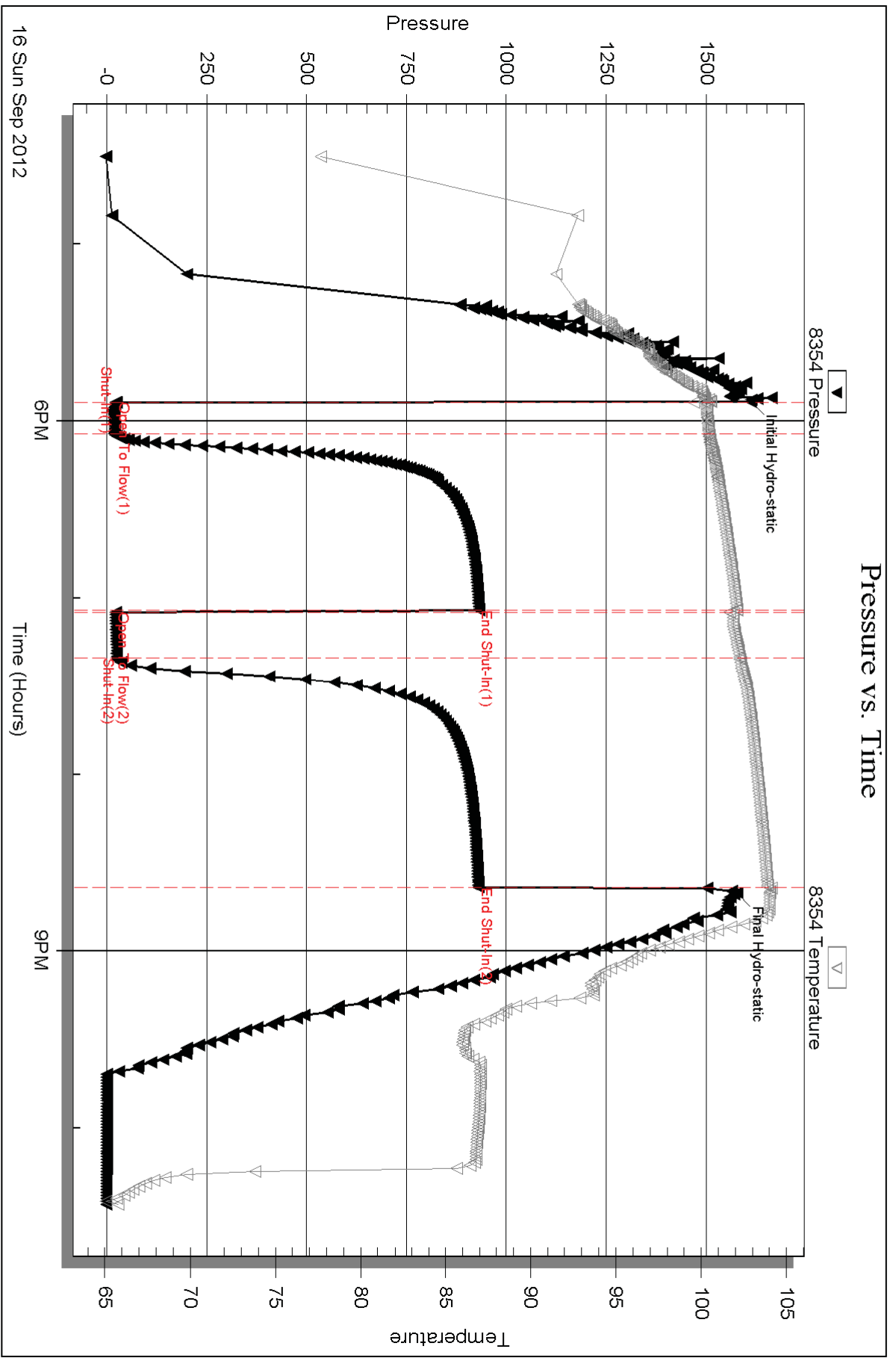
Serial #: 8354

Inside

Samuel Gary Jr. & Associates, Inc.

Koirth #1-35

DST Test Number: 1



Trilobite Testing, Inc

Ref. No: 47929

Printed: 2012.09.27 @ 13:37:09

Serial #: 8520

Outside Samuel Gary Jr. & Associates, Inc.

Koirth #1-35

DST Test Number: 1

