



**TRILOBITE
TESTING, INC.**

DRILL STEM TEST REPORT

Hutchinson Oil Co
PO Box 521
Derby, KS 67037
ATTN: Jeff Burk

20-22S-11W Stafford
Hunley 1-20
Job Ticket: 49575 **DST#: 2**
Test Start: 2012.09.19 @ 06:15:37

GENERAL INFORMATION:

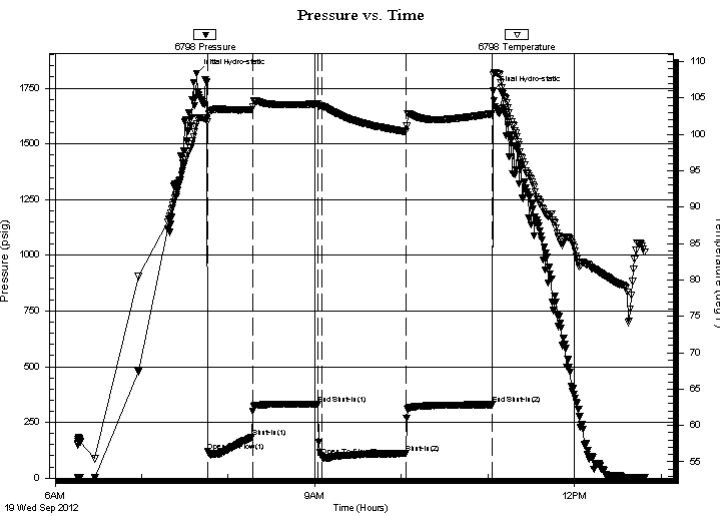
Formation: **Viola**
Deviated: No Whipstock: ft (KB)
Time Tool Opened: 07:45:37
Time Test Ended: 12:48:52
Interval: **3520.00 ft (KB) To 3553.00 ft (KB) (TVD)**
Total Depth: 3553.00 ft (KB) (TVD)
Hole Diameter: 7.88 inches Hole Condition: Good
Test Type: Conventional Bottom Hole (Reset)
Tester: Leal Cason
Unit No: 45
Reference Elevations: 1833.00 ft (KB)
1824.00 ft (CF)
KB to GR/CF: 9.00 ft

Serial #: 6798

Inside

Press @ Run Depth: 110.17 psig @ 3521.00 ft (KB) Capacity: 8000.00 psig
Start Date: 2012.09.19 End Date: 2012.09.19 Last Calib.: 2012.09.19
Start Time: 06:15:38 End Time: 12:48:52 Time On Btm: 2012.09.19 @ 07:38:07
Time Off Btm: 2012.09.19 @ 11:03:37

TEST COMMENT: IF: Strong Blow , BO in 45 seconds, GTS in 11 minutes, Gauged & Caught Sample
IS: No Blow Back
FF: Strong Blow , BOB & GTS immediate, Gauged Gas
FS: No Blow Back



PRESSURE SUMMARY

Time (Min.)	Pressure (psig)	Temp (deg F)	Annotation
0	1816.68	101.45	Initial Hydro-static
8	119.43	101.71	Open To Flow (1)
39	182.45	103.38	Shut-In(1)
84	333.24	104.20	End Shut-In(1)
87	96.82	103.93	Open To Flow (2)
145	110.17	100.40	Shut-In(2)
205	329.97	102.84	End Shut-In(2)
206	1737.37	108.14	Final Hydro-static

Recovery

Length (ft)	Description	Volume (bbl)
0.00	GIP 3374	0.00
150.00	GCM 5%G 95%M	0.74

* Recovery from multiple tests

Gas Rates

	Choke (inches)	Pressure (psig)	Gas Rate (Mcf/d)
First Gas Rate	0.25	80.00	149.76
Last Gas Rate	0.50	28.00	286.02
Max. Gas Rate	0.25	106.00	191.00



**TRILOBITE
TESTING, INC.**

DRILL STEM TEST REPORT

FLUID SUMMARY

Hutchinson Oil Co

20-22S-11W Stafford

PO Box 521
Derby, KS 67037

Hunley 1-20

Job Ticket: 49575

DST#: 2

ATTN: Jeff Burk

Test Start: 2012.09.19 @ 06:15:37

Mud and Cushion Information

Mud Type: Gel Chem

Cushion Type:

Oil API:

deg API

Mud Weight: 9.00 lb/gal

Cushion Length:

ft

Water Salinity:

ppm

Viscosity: 55.00 sec/qt

Cushion Volume:

bbbl

Water Loss: 9.59 in³

Gas Cushion Type:

Resistivity: ohm.m

Gas Cushion Pressure:

psig

Salinity: 3000.00 ppm

Filter Cake: 0.02 inches

Recovery Information

Recovery Table

Length ft	Description	Volume bbl
0.00	GIP 3374	0.000
150.00	GCM 5%G 95%M	0.738

Total Length: 150.00 ft Total Volume: 0.738 bbl

Num Fluid Samples: 0

Num Gas Bombs: 0

Serial #:

Laboratory Name:

Laboratory Location:

Recovery Comments:

