

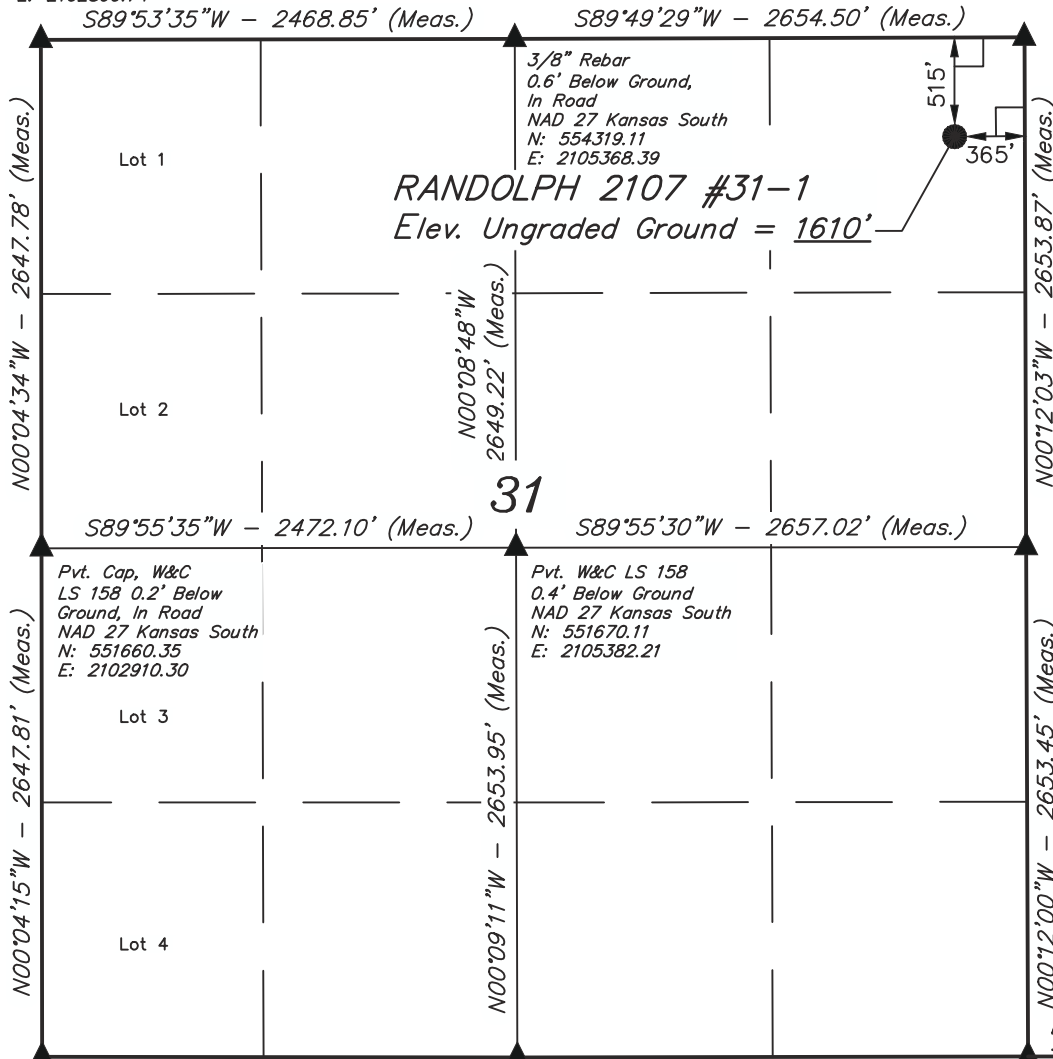
Limestone w/ 5/8"
Rebar on East Side
1.8' Below Ground,
In Road Intersection
NAD 27 Kansas South
N: 554307.94
E: 2102899.74

T21S, R7W, 6th P.M.

3/8" Rebar
0.4' Below Ground
NAD 27 Kansas South
N: 554334.29
E: 2108022.66

SGOMI

Well location, RANDOLPH 2107 #31-1, located as shown in the NE 1/4 NE 1/4 of Section 31, T21S R7W, 6th P.M., Rice County, Kansas.

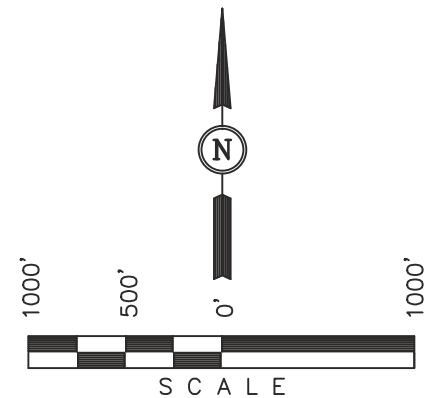


BASIS OF ELEVATION

SPOT ELEVATION LOCATED AT THE SOUTHWEST CORNER OF SECTION 18, T23S, R8W, 6th P.M. TAKEN FROM THE ALDEN S QUADRANGLE, KANSAS, RENO COUNTY, 7.5 MINUTE QUAD (TOPOGRAPHIC MAP) PUBLISHED BY THE UNITED STATES DEPARTMENT OF THE INTERIOR, GEOLOGICAL SURVEY, SAID ELEVATION IS MARKED AS BEING 1688 FEET.

BASIS OF BEARINGS

BASIS OF BEARINGS IS A G.P.S. OBSERVATION.



CERTIFICATE

THIS IS TO CERTIFY THAT THE ABOVE PLAT WAS PREPARED FROM FIELD NOTES OF ACTUAL SURVEYS MADE BY ME OR UNDER MY SUPERVISION AND THAT THE SAME ARE TRUE AND CORRECT TO THE BEST OF MY KNOWLEDGE AND BELIEF.

Justin S. Pearce
REGISTERED LAND SURVEYOR
REGISTRATION NO. 1051
STATE OF KANSAS

R
8
W
Limestone w/5/8"
Rebar Bent Over Top
1.7' Below Ground
NAD 27 Kansas South
N: 549012.74
E: 2102920.62

Limestone w/Small Bar
On West Side
0.8' Below Ground
NAD 27 Kansas South
N: 549016.38
E: 2105396.36

5/8" Rebar
0.4' Below Ground
In Road
NAD 27 Kansas South
N: 549027.43
E: 2108055.34

- LEGEND:**
- = 90° SYMBOL
 - ⬤ = PROPOSED WELL HEAD.
 - ▲ = SECTION CORNERS LOCATED.

NAD 83 (#31-1 SURFACE LOCATION)
LATITUDE = 38°11'13.44" (38.187067)
LONGITUDE = 98°07'32.74" (98.125761)
NAD 27 (#31-1 SURFACE LOCATION)
LATITUDE = 38°11'13.40" (38.187056)
LONGITUDE = 98°07'31.53" (98.125425)
STATE PLANE NAD 27 (KANSAS SOUTH)
N: 553817.29 E: 2107660.85

UINTAH ENGINEERING & LAND SURVEYING		
85 SOUTH 200 EAST - VERNAL, UTAH 84078		
(435) 789-1017		
SCALE 1" = 1000'	DATE SURVEYED: 11-29-30	DATE DRAWN: 12-04-12
PARTY B.L. T.B. C.A.G.	REFERENCES G.L.O. PLAT	
WEATHER COOL	FILE SGOMI	