



**TRILOBITE
TESTING, INC.**

DRILL STEM TEST REPORT

Forestar Petroleum I
1801 Broadway
Suite 900 Denver Co.
80202
ATTN: Charlie Sturdavant

27 10s 35w Thomas Ks.

Rosie#1-27

Job Ticket: 43017

DST#: 2

Test Start: 2012.12.06 @ 15:45:00

GENERAL INFORMATION:

Formation: **LKC-J**
 Deviated: No Whipstock: ft (KB)
 Time Tool Opened: 17:11:00
 Time Test Ended: 22:34:00
 Interval: **4350.00 ft (KB) To 4440.00 ft (KB) (TVD)**
 Total Depth: 4440.00 ft (KB) (TVD)
 Hole Diameter: 7.89 inches Hole Condition: Good
 Test Type: Conventional Bottom Hole (Reset)
 Tester: Chuck Kreuzer Jr.
 Unit No: 61
 Reference Elevations: 3315.00 ft (KB)
 3310.00 ft (CF)
 KB to GR/CF: 5.00 ft

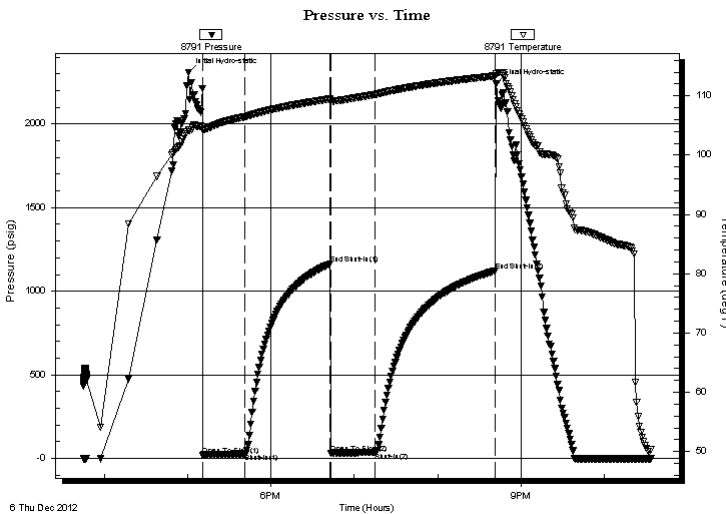
Serial #: 8791

Inside

Press @ Run Depth: 36.88 psig @ 4351.00 ft (KB) Capacity: 8000.00 psig
 Start Date: 2012.12.06 End Date: 2012.12.06 Last Calib.: 2012.12.06
 Start Time: 15:45:01 End Time: 22:34:00 Time On Btm: 2012.12.06 @ 17:00:30
 Time Off Btm: 2012.12.06 @ 20:42:30

TEST COMMENT: IF: Weak blow , Died in 22 mins.
 IS!: No blow back
 FF: No blow
 FS!: No blow Back

PRESSURE SUMMARY



Time (Min.)	Pressure (psig)	Temp (deg F)	Annotation
0	2308.35	104.19	Initial Hydro-static
11	20.33	104.33	Open To Flow (1)
41	28.43	106.46	Shut-In(1)
102	1162.52	109.47	End Shut-In(1)
103	31.59	109.11	Open To Flow (2)
135	36.88	110.23	Shut-In(2)
221	1121.63	113.37	End Shut-In(2)
222	2242.87	113.71	Final Hydro-static

Recovery

Length (ft)	Description	Volume (bbl)
15.00	mud-100%	0.07

Gas Rates

	Choke (inches)	Pressure (psig)	Gas Rate (Mcf/d)

* Recovery from multiple tests



**TRILOBITE
TESTING, INC.**

DRILL STEM TEST REPORT

FLUID SUMMARY

Forestar Petroleum I

27 10s 35w Thomas Ks.

1801 Broadway
Suite 900 Denver Co.
80202

Rosie#1-27

Job Ticket: 43017

DST#: 2

ATTN: Charlie Sturdavant

Test Start: 2012.12.06 @ 15:45:00

Mud and Cushion Information

Mud Type: Gel Chem

Cushion Type:

Oil API:

deg API

Mud Weight: 9.00 lb/gal

Cushion Length:

ft

Water Salinity:

ppm

Viscosity: 61.00 sec/qt

Cushion Volume:

bbbl

Water Loss: 9.59 in³

Gas Cushion Type:

Resistivity: ohm.m

Gas Cushion Pressure:

psig

Salinity: 7400.00 ppm

Filter Cake: 2.00 inches

Recovery Information

Recovery Table

Length ft	Description	Volume bbl
15.00	mud-100%	0.074

Total Length: 15.00 ft Total Volume: 0.074 bbl

Num Fluid Samples: 0

Num Gas Bombs: 0

Serial #:

Laboratory Name:

Laboratory Location:

Recovery Comments:

