



**TRILOBITE TESTING, INC.**

# DRILL STEM TEST REPORT

Forestar Petroleum I  
 1801 Broadway  
 Suite 900 Denver Co.  
 80202  
 ATTN: Charlie Sturdavant

**27 10s 35w Thomas Ks.**

**Rosie#1-27**

Job Ticket: 043019

**DST#: 4**

Test Start: 2012.12.08 @ 13:05:00

## GENERAL INFORMATION:

Formation: **Ft.Scott**  
 Deviated: No Whipstock: ft (KB)  
 Time Tool Opened: 15:03:30  
 Time Test Ended: 20:19:00  
 Interval: **4504.00 ft (KB) To 4686.00 ft (KB) (TVD)**  
 Total Depth: 4686.00 ft (KB) (TVD)  
 Hole Diameter: 7.89 inches Hole Condition: Fair  
 Test Type: Conventional Bottom Hole (Reset)  
 Tester: Chuck Kreuzer Jr.  
 Unit No: 61  
 Reference Elevations: 3315.00 ft (KB)  
 3310.00 ft (CF)  
 KB to GR/CF: 5.00 ft

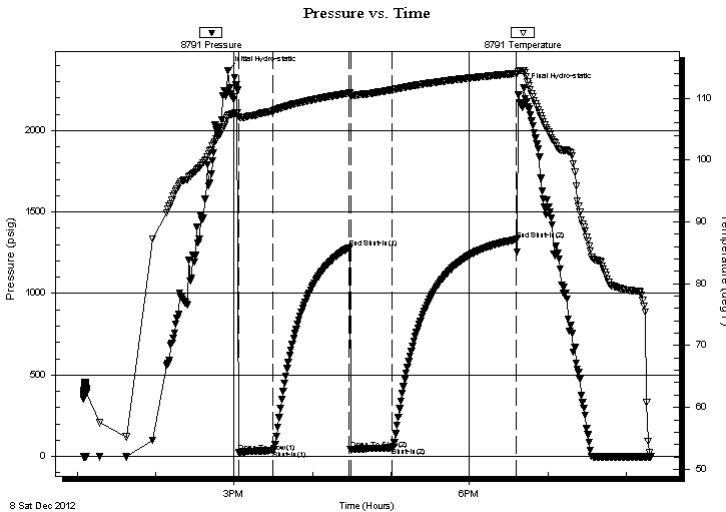
## Serial #: 8791

Inside

Press @ Run Depth: 53.78 psig @ 4505.00 ft (KB)  
 Start Date: 2012.12.08 End Date: 2012.12.08  
 Start Time: 13:05:01 End Time: 20:19:00  
 Capacity: 8000.00 psig  
 Last Calib.: 2012.12.08  
 Time On Btm: 2012.12.08 @ 14:55:30  
 Time Off Btm: 2012.12.08 @ 18:41:30

TEST COMMENT: IF: Weak surface blow over 30 mins.  
 IS: No blow back over 60 mins.  
 FF: No blow over 30 mins.  
 FS: No blow back over 90 mins.

## PRESSURE SUMMARY



Time (Min.)	Pressure (psig)	Temp (deg F)	Annotation
0	2368.62	107.15	Initial Hydro-static
8	25.33	106.98	Open To Flow (1)
34	37.32	107.94	Shut-In(1)
93	1281.63	110.80	End Shut-In(1)
94	42.64	110.30	Open To Flow (2)
126	53.78	111.33	Shut-In(2)
221	1331.08	114.00	End Shut-In(2)
226	2261.22	114.47	Final Hydro-static

## Recovery

Length (ft)	Description	Volume (bbl)
63.00	mud w ith oil specs	0.31

## Gas Rates

Choke (inches)	Pressure (psig)	Gas Rate (Mcf/d)

\* Recovery from multiple tests



**TRILOBITE  
TESTING, INC.**

# DRILL STEM TEST REPORT

**FLUID SUMMARY**

Forestar Petroleum I

**27 10s 35w Thomas Ks.**

1801 Broadway  
Suite 900 Denver Co.  
80202

**Rosie#1-27**

Job Ticket: 043019

**DST#: 4**

ATTN: Charlie Sturdavant

Test Start: 2012.12.08 @ 13:05:00

## Mud and Cushion Information

Mud Type: Gel Chem

Cushion Type:

Oil API:

deg API

Mud Weight: 9.00 lb/gal

Cushion Length:

ft

Water Salinity:

ppm

Viscosity: 60.00 sec/qt

Cushion Volume:

bbbl

Water Loss: 8.79 in<sup>3</sup>

Gas Cushion Type:

Resistivity: ohm.m

Gas Cushion Pressure:

psig

Salinity: 4400.00 ppm

Filter Cake: 2.00 inches

## Recovery Information

Recovery Table

Length ft	Description	Volume bbl
63.00	mud w ith oil specs	0.310

Total Length: 63.00 ft      Total Volume: 0.310 bbl

Num Fluid Samples: 0

Num Gas Bombs: 0

Serial #:

Laboratory Name:

Laboratory Location:

Recovery Comments:

