



TRILOBITE TESTING, INC.

DRILL STEM TEST REPORT

Forestar Petroleum I
 1801 Broadway
 Suite 900 Denver Co.
 80202
 ATTN: Charlie Sturdavant

27 10s 35w Thomas Ks.

Rosie#1-27

Job Ticket: 043020

DST#: 5

Test Start: 2012.12.09 @ 10:50:00

GENERAL INFORMATION:

Formation: **Johnson/cherо.**
 Deviated: No Whipstock: ft (KB)
 Time Tool Opened: 13:05:00
 Time Test Ended: 17:33:30
 Interval: **4674.00 ft (KB) To 4810.00 ft (KB) (TVD)**
 Total Depth: 4810.00 ft (KB) (TVD)
 Hole Diameter: 7.89 inches Hole Condition: Good
 Test Type: Conventional Bottom Hole (Reset)
 Tester: Chuck Kreuzer Jr.
 Unit No: 61
 Reference Elevations: 3315.00 ft (KB)
 3310.00 ft (CF)
 KB to GR/CF: 5.00 ft

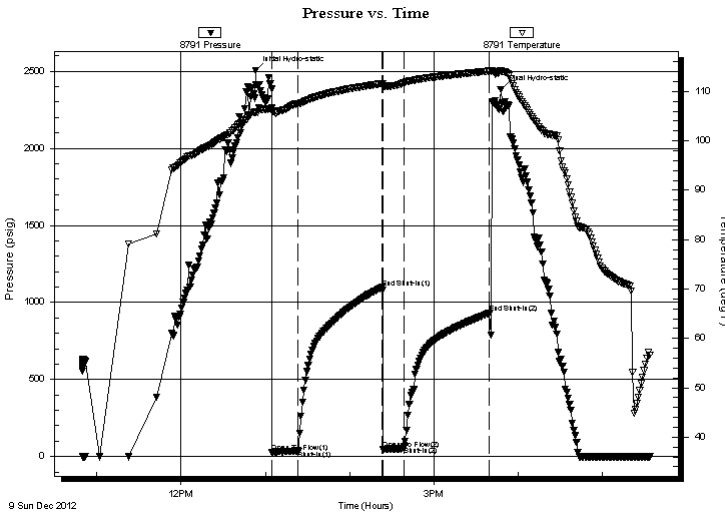
Serial #: 8791

Inside

Press @ Run Depth: 63.26 psig @ 4675.00 ft (KB)
 Start Date: 2012.12.09 End Date: 2012.12.09
 Start Time: 10:50:01 End Time: 17:33:30
 Capacity: 8000.00 psig
 Last Calib.: 2012.12.09
 Time On Btm: 2012.12.09 @ 12:53:00
 Time Off Btm: 2012.12.09 @ 15:47:30

TEST COMMENT: IF: Weak surface blow, Deid in 10 mins.
 IS: No blow back over 60 mins.
 FF: No blow.
 FS: No blow back over 60 mins.

PRESSURE SUMMARY



Time (Min.)	Pressure (psig)	Temp (deg F)	Annotation
0	2505.35	105.79	Initial Hydro-static
12	27.39	106.07	Open To Flow (1)
30	37.69	107.47	Shut-In(1)
90	1096.08	111.58	End Shut-In(1)
91	46.44	111.15	Open To Flow (2)
106	63.26	111.78	Shut-In(2)
166	928.18	114.11	End Shut-In(2)
175	2379.38	114.11	Final Hydro-static

Recovery

Length (ft)	Description	Volume (bbl)
73.00	MUD-100%	0.36

* Recovery from multiple tests

Gas Rates

Choke (inches)	Pressure (psig)	Gas Rate (Mcf/d)



**TRILOBITE
TESTING, INC.**

DRILL STEM TEST REPORT

FLUID SUMMARY

Forestar Petroleum I

27 10s 35w Thomas Ks.

1801 Broadway
Suite 900 Denver Co.
80202

Rosie#1-27

Job Ticket: 043020

DST#: 5

ATTN: Charlie Sturdavant

Test Start: 2012.12.09 @ 10:50:00

Mud and Cushion Information

Mud Type: Gel Chem

Cushion Type:

Oil API:

deg API

Mud Weight: 9.00 lb/gal

Cushion Length:

ft

Water Salinity:

ppm

Viscosity: 61.00 sec/qt

Cushion Volume:

bbf

Water Loss: 9.59 in³

Gas Cushion Type:

Resistivity: ohm.m

Gas Cushion Pressure:

psig

Salinity: 4700.00 ppm

Filter Cake: 2.00 inches

Recovery Information

Recovery Table

Length ft	Description	Volume bbf
73.00	MUD-100%	0.359

Total Length: 73.00 ft Total Volume: 0.359 bbf

Num Fluid Samples: 0

Num Gas Bombs: 0

Serial #:

Laboratory Name:

Laboratory Location:

Recovery Comments:

