

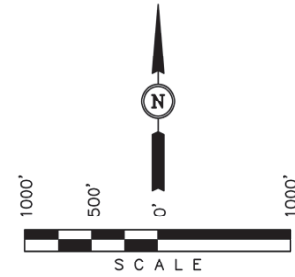
Well location, NUNEMAKER 2509 #32-1H, located as shown in the NE 1/4 NE 1/4 of Section 32, T25S, R9W, 6th P.M., Reno County, Kansas.

BASIS OF ELEVATION

SPOT ELEVATION LOCATED AT THE SW CORNER OF SECTION 18, T23S, R8W, 6th P.M. TAKEN FROM THE ALDEN SE, QUADRANGLE, KANSAS, RENO COUNTY, 7.5 MINUTE QUAD (TOPOGRAPHIC MAP) PUBLISHED BY THE UNITED STATES DEPARTMENT OF THE INTERIOR, GEOLOGICAL SURVEY, SAID ELEVATION IS MARKED AS BEING 1688 FEET.

BASIS OF BEARINGS

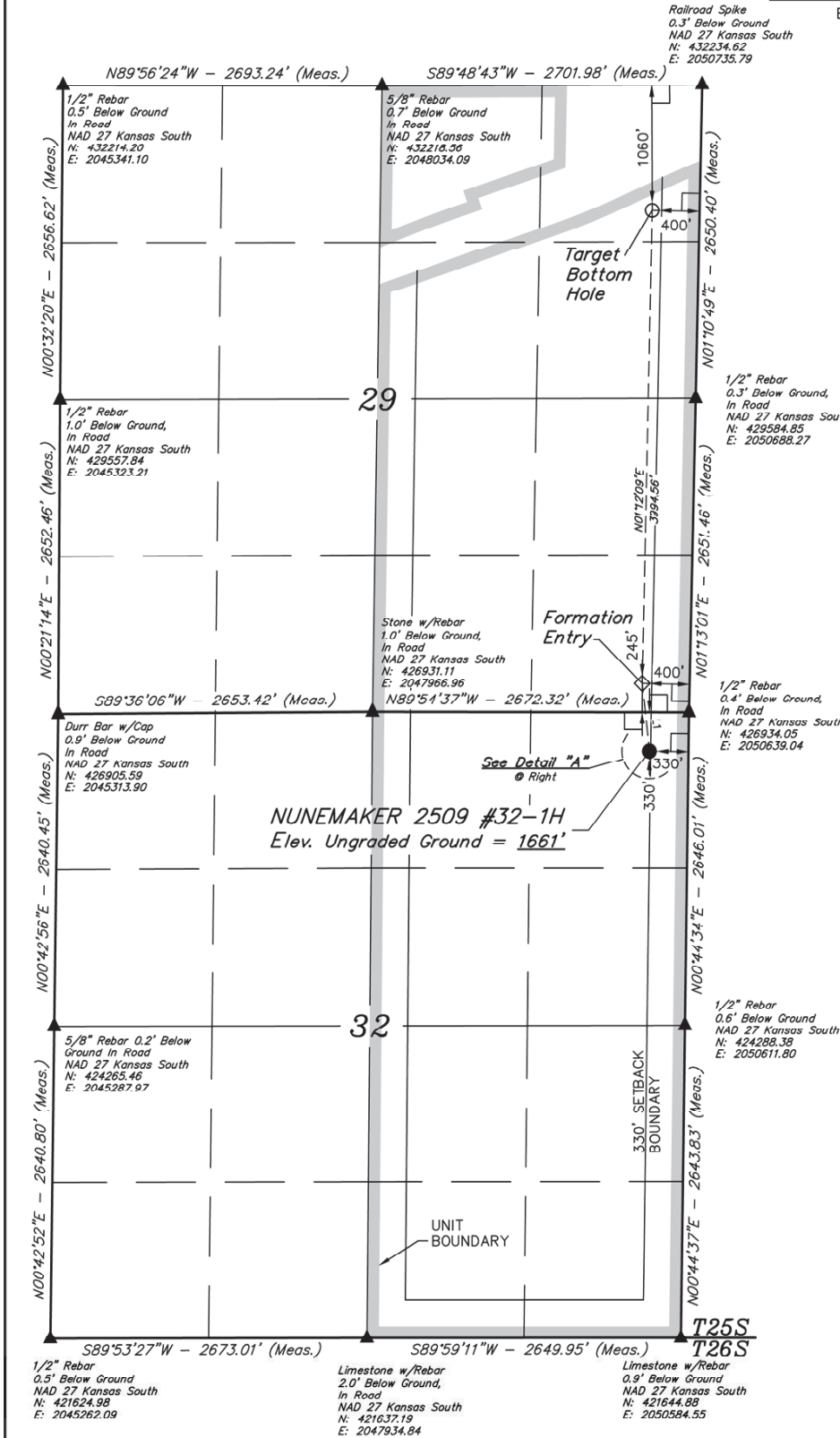
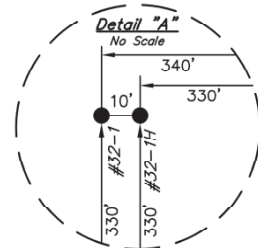
BASIS OF BEARINGS IS A G.P.S. OBSERVATION.



LINE TABLE		
LINE	DIRECTION	LENGTH
L1	N06°01'08"W	578.37'

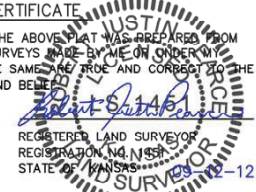
LEGEND:

- └ = 90° SYMBOL
- = PROPOSED WELL HEAD.
- ▲ = SECTION CORNERS LOCATED.



CERTIFICATE

THIS IS TO CERTIFY THAT THE ABOVE PLAT WAS PREPARED FROM FIELD NOTES OF ACTUAL SURVEYS MADE BY ME OR UNDER MY SUPERVISION AND THAT THE SAME ARE TRUE AND CORRECT TO THE BEST OF MY KNOWLEDGE AND BELIEF.



UNTAH ENGINEERING & LAND SURVEYING			SCALE			DATE SURVEYED:		DATE DRAWN:	
85 SOUTH 200 EAST - VERNAL, UTAH 84078			1" = 1000'			08-21-12		09-04-12	
(435) 789-1017			PARTY			REFERENCES			
			J.P. C.B. C.A.G.			G.L.O. PLAT			
			WEATHER			FILE			
			HOT			SGOMI			
NAD 83 (#32-1H TARGET BOTTOM HOLE)		NAD 83 (#32-1H FORMATION ENTRY)		NAD 83 (#32-1H SURFACE LOCATION)		STATE PLANE NAD 27 (KANSAS SOUTH)		STATE PLANE NAD 27 (KANSAS SOUTH)	
LATITUDE = 37°51'02.60" (37.850722)		LATITUDE = 37°50'23.12" (37.839756)		LATITUDE = 37°50'17.43" (37.838176)		N: 431172.19 E: 2050316.70		N: 428603.61 E: 2050305.72	
LONGITUDE = 98°19'33.90" (98.326083)		LONGITUDE = 98°19'34.90" (98.326361)		LONGITUDE = 98°19'34.14" (98.326150)					
NAD 27 (#32-1H TARGET BOTTOM HOLE)		NAD 27 (#32-1H FORMATION ENTRY)		NAD 27 (#32-1H SURFACE LOCATION)		STATE PLANE NAD 27 (KANSAS SOUTH)		STATE PLANE NAD 27 (KANSAS SOUTH)	
LATITUDE = 37°51'02.54" (37.850706)		LATITUDE = 37°50'23.06" (37.839739)		LATITUDE = 37°50'17.38" (37.838161)		N: 421624.98 E: 2045262.09		N: 421637.19 E: 2047934.84	
LONGITUDE = 98°19'32.64" (98.325733)		LONGITUDE = 98°19'33.65" (98.326014)		LONGITUDE = 98°19'32.89" (98.325803)					