



DRILL STEM TEST REPORT

Prepared For: **Carrie Exploration**

210 West 22nd Hays Kansas
67601

ATTN: Herb Deines

Sara C-1

8-22s-10-w Reno

Start Date: 2013.01.08 @ 02:55:00

End Date: 2013.01.08 @ 09:27:30

Job Ticket #: 17724 DST #: 2

Superior Testers Enterprises LLC
PO Box 138 Great Bend KS 67530
1-800-792-6902

Printed: 2013.01.08 @ 09:44:54



DRILL STEM TEST REPORT

Carrie Exploration
 210 West 22nd Hays Kansas
 67601
 ATTN: Herb Deines

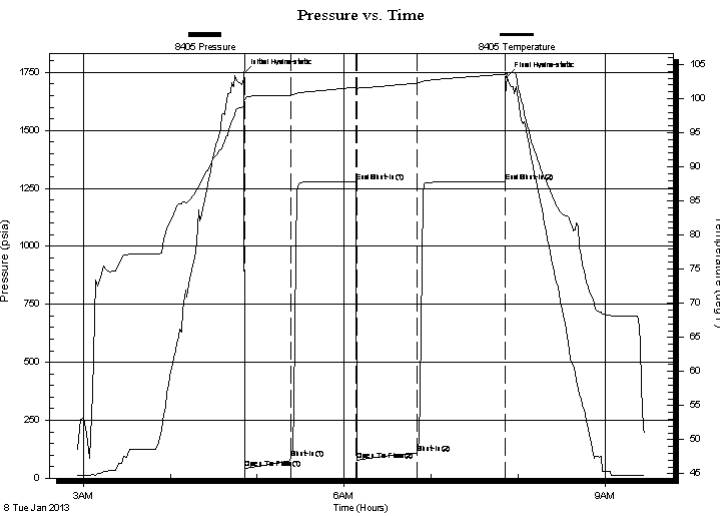
8-22s-10-w Reno
Sara C-1
 Job Ticket: 17724 **DST#: 2**
 Test Start: 2013.01.08 @ 02:55:00

GENERAL INFORMATION:

Formation: **Simpson**
 Deviated: No Whipstock: ft (KB)
 Time Tool Opened: 04:51:30
 Time Test Ended: 09:27:30
 Test Type: Conventional Bottom Hole (Initial)
 Tester: Dustin Ellis
 Unit No: 3315-Great Bend-75
 Interval: **3490.00 ft (KB) To 3530.00 ft (KB) (TVD)**
 Total Depth: 3530.00 ft (KB) (TVD)
 Reference Elevations: 1772.00 ft (KB)
 1764.00 ft (CF)
 Hole Diameter: 7.88 inches Hole Condition: Fair
 KB to GR/CF: 8.00 ft

Serial #: 8405 Inside
 Press@RunDepth: 107.92 psia @ 3526.00 ft (KB) Capacity: 5000.00 psia
 Start Date: 2013.01.08 End Date: 2013.01.08 Last Calib.: 2013.01.08
 Start Time: 02:55:00 End Time: 09:27:30 Time On Btm: 2013.01.08 @ 04:51:00
 Time Off Btm: 2013.01.08 @ 07:52:30

TEST COMMENT: 1st Open 30 minutes Fair building blow blew 4.5 inches .
 1st Shut in 45 minutes No blow back.
 2nd Open 45 minutes Fair building blow blew 5 inches.
 2nd Shut in 60 minutes No blow back.



PRESSURE SUMMARY			
Time (Min.)	Pressure (psia)	Temp (deg F)	Annotation
0	1746.49	100.00	Initial Hydro-static
1	41.36	99.86	Open To Flow (1)
33	84.68	100.51	Shut-In(1)
77	1278.93	101.66	End Shut-In(1)
78	77.40	101.53	Open To Flow (2)
120	107.92	102.30	Shut-In(2)
180	1278.03	103.57	End Shut-In(2)
182	1730.19	103.60	Final Hydro-static

Recovery		
Length (ft)	Description	Volume (bbl)
130.00	Oil spotted muddy w water	0.64
0.00	Mud 20% Water 80%	0.00
0.00	Chlorides 37,000 .4 ohms @59 Degrees	0.00

Gas Rates			
	Choke (inches)	Pressure (psia)	Gas Rate (Mcf/d)



DRILL STEM TEST REPORT

TOOL DIAGRAM

Carrie Exploration
 210 West 22nd Hays Kansas
 67601
 ATTN: Herb Deines

8-22s-10-w Reno
Sara C-1
 Job Ticket: 17724 **DST#:2**
 Test Start: 2013.01.08 @ 02:55:00

Tool Information

Drill Pipe:	Length: 3323.00 ft	Diameter: 3.80 inches	Volume: 46.61 bbl	Tool Weight:	2000.00 lb
Heavy Wt. Pipe:	Length: 0.00 ft	Diameter: 0.00 inches	Volume: 0.00 bbl	Weight set on Packer:	20000.00 lb
Drill Collar:	Length: 166.62 ft	Diameter: 2.25 inches	Volume: 0.82 bbl	Weight to Pull Loose:	60000.00 lb
			<u>Total Volume: 47.43 bbl</u>	Tool Chased	1.00 ft
Drill Pipe Above KB:	19.62 ft			String Weight: Initial	58000.00 lb
Depth to Top Packer:	3490.00 ft			Final	58000.00 lb
Depth to Bottom Packer:	ft				
Interval between Packers:	40.00 ft				
Tool Length:	60.00 ft				
Number of Packers:	2	Diameter: 6.75 inches			

Tool Comments:

Tool Description	Length (ft)	Serial No.	Position	Depth (ft)	Accum. Lengths
Shut-In Tool	5.00			3475.00	
Hydraulic Tool	5.00			3480.00	
Packer	5.00			3485.00	20.00 Bottom Of Top Packer
Packer	5.00			3490.00	
Anchor	35.00			3525.00	
Recorder	1.00	8405	Inside	3526.00	
Recorder	1.00	8400	Outside	3527.00	
Bullnose	3.00			3530.00	40.00 Bottom Packers & Anchor

Total Tool Length: 60.00



DRILL STEM TEST REPORT

FLUID SUMMARY

Carrie Exploration
210 West 22nd Hays Kansas
67601
ATTN: Herb Deines

8-22s-10-w Reno
Sara C-1
Job Ticket: 17724 **DST#: 2**
Test Start: 2013.01.08 @ 02:55:00

Mud and Cushion Information

Mud Type: Gel Chem	Cushion Type:	Oil API:	deg API
Mud Weight: 9.00 lb/gal	Cushion Length: ft	Water Salinity:	ppm
Viscosity: 49.00 sec/qt	Cushion Volume: bbl		
Water Loss: 8.00 in ³	Gas Cushion Type:		
Resistivity: ohm.m	Gas Cushion Pressure: psia		
Salinity: 5000.00 ppm			
Filter Cake: 1.00 inches			

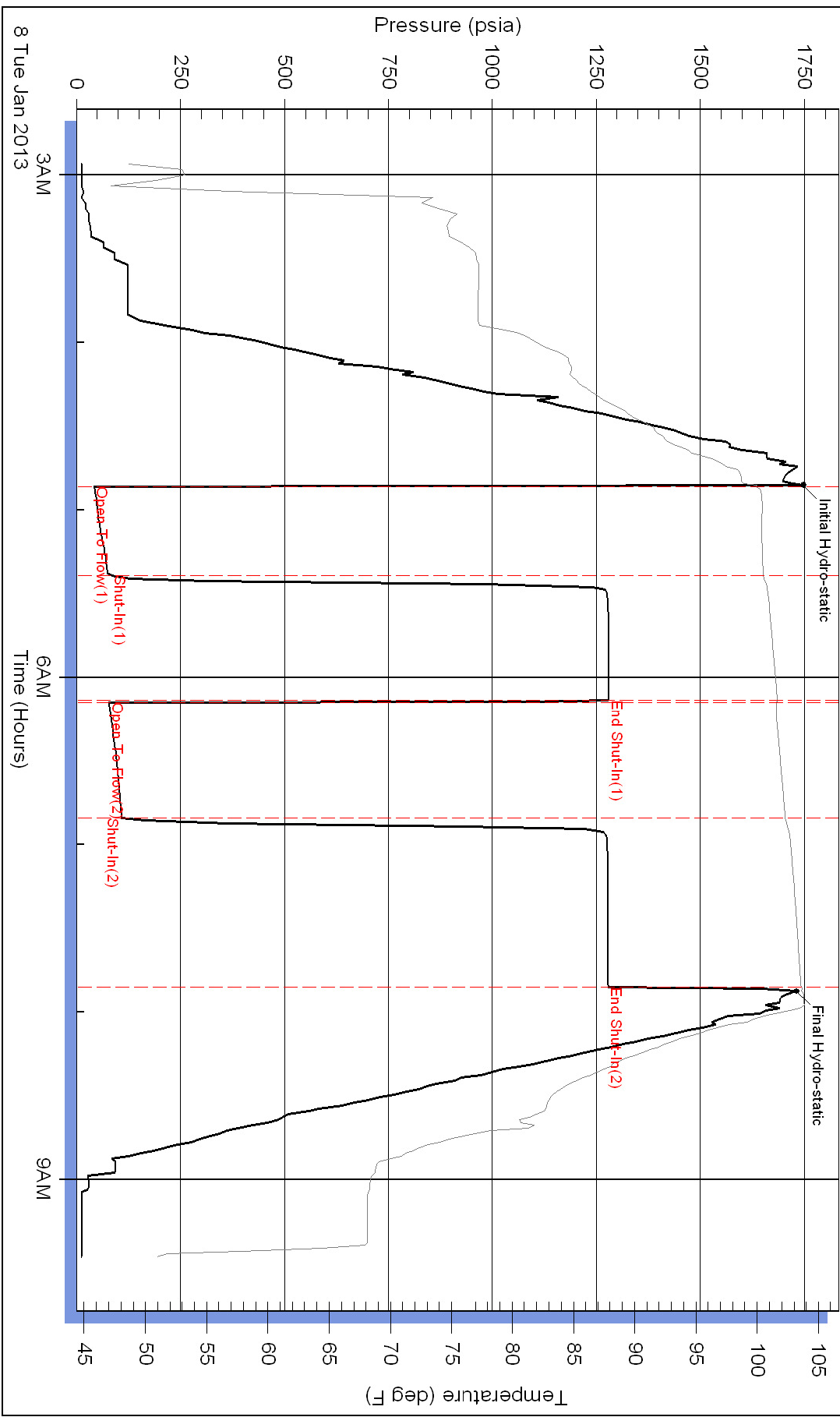
Recovery Information

Recovery Table

Length ft	Description	Volume bbl
130.00	Oil spotted muddy w ater	0.639
0.00	Mud 20% Water 80%	0.000
0.00	Chlorides 37,000 .4 ohms @59 Degrees	0.000

Total Length: 130.00 ft Total Volume: 0.639 bbl
Num Fluid Samples: 0 Num Gas Bombs: 0 Serial #:
Laboratory Name: Laboratory Location:
Recovery Comments:

Pressure vs. Time



Pressure vs. Time

