



TRILOBITE TESTING, INC.

DRILL STEM TEST REPORT

Woolsey Operating Co.
 125 N. Market, Ste. 1000
 Wichita Ks. 67202
 ATTN: Scott Alberg

14-35s-12w Barber Ks.

Achenbach#1

Job Ticket: 49608

DST#: 1

Test Start: 2012.09.23 @ 00:02:23

GENERAL INFORMATION:

Formation: **Cherokee /Miss.**
 Deviated: No Whipstock: ft (KB)
 Time Tool Opened: 03:13:38
 Time Test Ended: 10:17:08
 Interval: **4740.00 ft (KB) To 4887.00 ft (KB) (TVD)**
 Total Depth: 4887.00 ft (KB) (TVD)
 Hole Diameter: 7.88 inches Hole Condition: Poor
 Test Type: Conventional Bottom Hole (Initial)
 Tester: Gary Pevoteaux
 Unit No: 56
 Reference Elevations: 1382.00 ft (KB)
 1374.00 ft (CF)
 KB to GR/CF: 8.00 ft

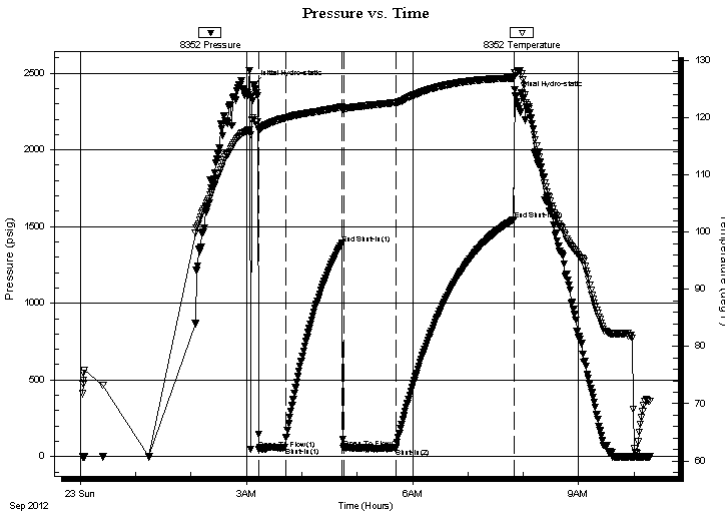
Serial #: 8352

Outside

Press @ Run Depth: 55.51 psig @ 4741.00 ft (KB) Capacity: 8000.00 psig
 Start Date: 2012.09.23 End Date: 2012.09.23 Last Calib.: 2012.09.23
 Start Time: 00:02:28 End Time: 10:17:08 Time On Btm: 2012.09.23 @ 03:08:08
 Time Off Btm: 2012.09.23 @ 07:51:23

TEST COMMENT: IF: Strong blow . B.O.B. in 5 mins.
 IS: No blow .
 FF: Strong blow . B.O.B. in 2 secs. GTS in 5 mins. (see gas flow report)
 FS: Weak blow . 1/4" or less.

PRESSURE SUMMARY



Time (Min.)	Pressure (psig)	Temp (deg F)	Annotation
0	2424.23	119.61	Initial Hydro-static
6	49.39	118.05	Open To Flow (1)
34	59.20	119.92	Shut-In (1)
96	1390.15	121.88	End Shut-In (1)
97	53.59	121.59	Open To Flow (2)
154	55.51	122.59	Shut-In (2)
282	1544.51	126.91	End Shut-In (2)
284	2354.47	127.76	Final Hydro-static

Recovery

Length (ft)	Description	Volume (bbl)
110.00	Drig. mud	0.54

Gas Rates

	Choke (inches)	Pressure (psig)	Gas Rate (Mcf/d)
First Gas Rate	0.25	3.50	28.40
Last Gas Rate	0.25	2.00	26.02
Max. Gas Rate	0.25	3.50	28.40



**TRILOBITE
TESTING, INC.**

DRILL STEM TEST REPORT

FLUID SUMMARY

Woolsey Operating Co.

14-35s-12w Barber Ks.

125 N. Market, Ste. 1000
Wichita Ks. 67202

Achenbach#1

Job Ticket: 49608

DST#: 1

ATTN: Scott Alberg

Test Start: 2012.09.23 @ 00:02:23

Mud and Cushion Information

Mud Type: Gel Chem

Cushion Type:

Oil API:

deg API

Mud Weight: 9.00 lb/gal

Cushion Length:

ft

Water Salinity:

4000 ppm

Viscosity: 49.00 sec/qt

Cushion Volume:

bbbl

Water Loss: 9.59 in³

Gas Cushion Type:

Resistivity: 0.00 ohm.m

Gas Cushion Pressure:

psig

Salinity: 4000.00 ppm

Filter Cake: 0.20 inches

Recovery Information

Recovery Table

Length ft	Description	Volume bbl
110.00	Drig.mud	0.541

Total Length: 110.00 ft

Total Volume: 0.541 bbl

Num Fluid Samples: 0

Num Gas Bombs: 1

Serial #: gp-1

Laboratory Name: Caraway

Laboratory Location: Liberal, KS

Recovery Comments:



**TRILOBITE
TESTING, INC.**

DRILL STEM TEST REPORT

GAS RATES

Woolsey Operating Co.

14-35s-12w Barber Ks.

125 N. Market, Ste. 1000
Wichita Ks. 67202

Achenbach#1

Job Ticket: 49608

DST#: 1

ATTN: Scott Alberg

Test Start: 2012.09.23 @ 00:02:23

Gas Rates Information

Temperature: 59 (deg F)
Relative Density: 0.65
Z Factor: 0.8

Gas Rates Table

Flow Period	Elapsed Time	Choke (inches)	Pressure (psig)	Gas Rate (Mcf/d)
2	10	0.25	3.50	28.40
2	20	0.25	3.00	27.60
2	30	0.25	3.00	27.60
2	40	0.25	2.00	26.02
2	50	0.25	2.00	26.02
2	60	0.25	2.00	26.02

