



TRILOBITE TESTING, INC

DRILL STEM TEST REPORT

Woolsey Operating Co.
125 N. Market, Ste. 1000
Wichita Ks. 67202
ATTN: Scott Alberg

14-35s-12w Barber Ks.

Achenbach#1

Job Ticket: 49609

DST#: 2

Test Start: 2012.09.23 @ 22:32:46

GENERAL INFORMATION:

Formation: **Miss.**
Deviated: No Whipstock: ft (KB)
Time Tool Opened: 01:20:46
Time Test Ended: 09:05:01
Interval: **4888.00 ft (KB) To 4922.00 ft (KB) (TVD)**
Total Depth: 4922.00 ft (KB) (TVD)
Hole Diameter: 7.88 inches Hole Condition:
Test Type: Conventional Bottom Hole (Reset)
Tester: Gary Pevoteaux
Unit No: 56
Reference Elevations: 1382.00 ft (KB)
1374.00 ft (CF)
KB to GR/CF: 8.00 ft

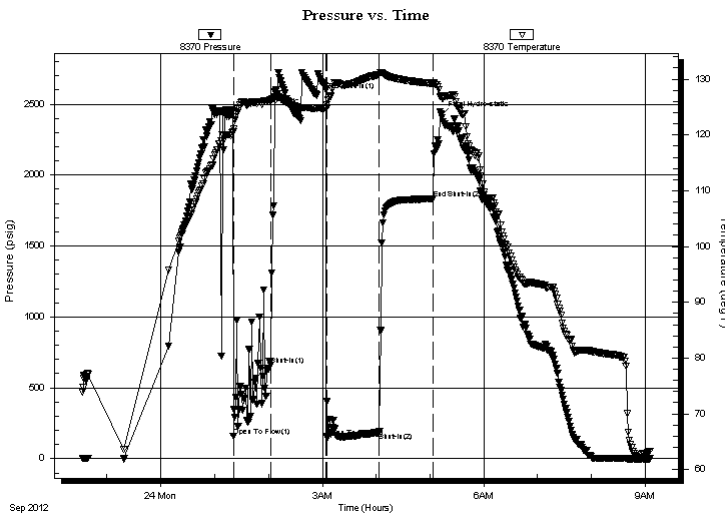
Serial #: 8370

Inside

Press @ Run Depth: 183.65 psig @ 4889.00 ft (KB) Capacity: 8000.00 psig
Start Date: 2012.09.23 End Date: 2012.09.24 Last Calib.: 2012.09.24
Start Time: 22:32:51 End Time: 09:05:01 Time On Btm: 2012.09.24 @ 01:18:16
Time Off Btm: 2012.09.24 @ 05:12:31

TEST COMMENT: IF: Weak surging blow . 1 - 2". 34 ft. of hard fill on btm. Tool sliding throughout open.
IS: No blow . Tool sliding throughout ISIP.
FF: Weak to fair blow . 1 - 6". Tool sliding for 1st 10 mins. of FFP.
FS: No blow .

PRESSURE SUMMARY



Time (Min.)	Pressure (psig)	Temp (deg F)	Annotation
0	2440.52	119.93	Initial Hydro-static
3	159.44	120.62	Open To Flow (1)
44	661.63	126.22	Shut-In (1)
106	2599.71	124.81	End Shut-In (1)
107	154.48	124.78	Open To Flow (2)
165	183.65	130.86	Shut-In (2)
226	1832.40	129.24	End Shut-In (2)
235	2422.00	126.91	Final Hydro-static

Recovery

Length (ft)	Description	Volume (bbl)
120.00	GOCWM 34%g 3%o 20%w 43%m	0.59
62.00	GOCWM 23%g 3%o 13%w 61%m	0.85
103.00	Heavy gritty mud w/oil specs	1.44

Gas Rates

Choke (inches)	Pressure (psig)	Gas Rate (Mcf/d)

* Recovery from multiple tests



**TRILOBITE
TESTING, INC**

DRILL STEM TEST REPORT

FLUID SUMMARY

Woolsey Operating Co.

14-35s-12w Barber Ks.

125 N.Market, Ste.1000
Wichita Ks.67202

Achenbach#1

Job Ticket: 49609

DST#: 2

ATTN: Scott Alberg

Test Start: 2012.09.23 @ 22:32:46

Mud and Cushion Information

Mud Type: Gel Chem

Cushion Type:

Oil API:

deg API

Mud Weight: 9.00 lb/gal

Cushion Length:

ft

Water Salinity:

24000 ppm

Viscosity: 53.00 sec/qt

Cushion Volume:

bbbl

Water Loss: 11.18 in³

Gas Cushion Type:

Resistivity: 0.00 ohm.m

Gas Cushion Pressure:

psig

Salinity: 6000.00 ppm

Filter Cake: 0.20 inches

Recovery Information

Recovery Table

Length ft	Description	Volume bbbl
120.00	GOCWM 34%g 3%o 20%w 43%m	0.590
62.00	GOCWM 23%g 3%o 13%w 61%m	0.851
103.00	Heavy gritty mud w/oil specs	1.445

Total Length: 285.00 ft Total Volume: 2.886 bbl

Num Fluid Samples: 0

Num Gas Bombs: 0

Serial #: none

Laboratory Name:

Laboratory Location:

Recovery Comments: Rw .35@ 63 deg.

