



## DRILL STEM TEST REPORT

Prepared For: **John O Farmer Inc**

PO Box 352  
Russell KS 67665-2635

ATTN: Austin Klaus

### **States A # 2**

### **15 5s 20w Phillips,KS**

Start Date: 2012.09.22 @ 14:15:00

End Date: 2012.09.22 @ 20:15:00

Job Ticket #: 48659                      DST #: 1

Trilobite Testing, Inc

PO Box 362 Hays, KS 67601

ph: 785-625-4778 fax: 785-625-5620

Printed: 2012.09.27 @ 09:38:15



**TRILOBITE  
TESTING, INC.**

# DRILL STEM TEST REPORT

John O Farmer Inc  
PO Box 352  
Russell KS 67665-2635  
ATTN: Austin Klaus

**15 5s 20w Phillips,KS**  
**States A # 2**  
Job Ticket: 48659 **DST#: 1**  
Test Start: 2012.09.22 @ 14:15:00

## GENERAL INFORMATION:

Formation: **LKC " C "**  
Deviated: No Whipstock: 2104.00 ft (KB)  
Time Tool Opened: 16:17:45  
Time Test Ended: 20:15:00  
Interval: **3271.00 ft (KB) To 3300.00 ft (KB) (TVD)**  
Total Depth: 3300.00 ft (KB) (TVD)  
Hole Diameter: 7.88 inches Hole Condition: Fair  
Test Type: Conventional Bottom Hole (Initial)  
Tester: Jim Svaty  
Unit No: 58  
Reference Elevations: 2104.00 ft (KB)  
2099.00 ft (CF)  
KB to GR/CF: 5.00 ft

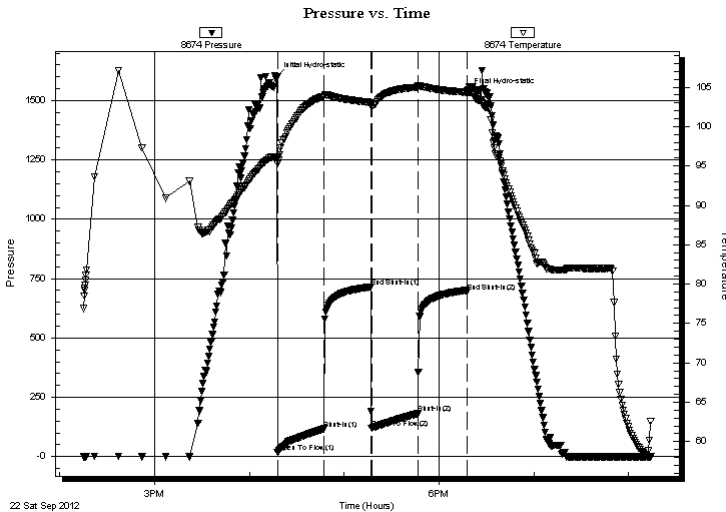
## Serial #: 8674

Inside

Press @ Run Depth: 181.29 psig @ 3272.00 ft (KB) Capacity: 8000.00 psig  
Start Date: 2012.09.22 End Date: 2012.09.22 Last Calib.: 2012.09.22  
Start Time: 14:15:05 End Time: 20:13:59 Time On Btm: 2012.09.22 @ 16:17:30  
Time Off Btm: 2012.09.22 @ 18:17:45

TEST COMMENT: 30-IFP- BOB in 14 min  
30-ISIP- Weak Surface Blow Died in 25 min  
30-FFP- BOB in 16 min  
30-FSIP- Very Weak Surface Blow Died in 10 min

## PRESSURE SUMMARY



Time (Min.)	Pressure (psig)	Temp (deg F)	Annotation
0	1599.86	96.16	Initial Hydro-static
1	17.63	95.27	Open To Flow (1)
30	117.02	103.85	Shut-In(1)
60	714.99	103.05	End Shut-In(1)
60	119.73	102.81	Open To Flow (2)
90	181.29	105.01	Shut-In(2)
120	693.62	104.33	End Shut-In(2)
121	1535.41	104.60	Final Hydro-static

## Recovery

Length (ft)	Description	Volume (bbl)
186.00	MCW 10%o 90%w	1.52
124.00	V SOMCW 2%o 10%o 88%w	1.74
50.00	OMCW 5%o 20%o 75%w	0.70
8.00	MCO 5%o 95%o	0.11
0.00	120 GIP	0.00

## Gas Rates

Choke (inches)	Pressure (psig)	Gas Rate (Mcf/d)





**TRILOBITE  
TESTING, INC.**

# DRILL STEM TEST REPORT

**TOOL DIAGRAM**

John O Farmer Inc  
PO Box 352  
Russell KS 67665-2635  
ATTN: Austin Klaus

**15 5s 20w Phillips,KS**  
**States A # 2**  
Job Ticket: 48659      **DST#: 1**  
Test Start: 2012.09.22 @ 14:15:00

**Tool Information**

Drill Pipe:	Length: 3161.00 ft	Diameter: 3.80 inches	Volume: 44.34 bbl	Tool Weight:	2500.00 lb
Heavy Wt. Pipe:	Length: 0.00 ft	Diameter: 2.75 inches	Volume: 0.00 bbl	Weight set on Packer:	25000.00 lb
Drill Collar:	Length: 120.00 ft	Diameter: 2.25 inches	Volume: 0.59 bbl	Weight to Pull Loose:	65000.00 lb
			<u>Total Volume: 44.93 bbl</u>	Tool Chased	0.00 ft
Drill Pipe Above KB:	30.00 ft			String Weight: Initial	36000.00 lb
Depth to Top Packer:	3271.00 ft			Final	39000.00 lb
Depth to Bottom Packer:	ft				
Interval between Packers:	29.00 ft				
Tool Length:	49.00 ft				
Number of Packers:	2	Diameter: 6.75 inches			

Tool Comments:

<b>Tool Description</b>	<b>Length (ft)</b>	<b>Serial No.</b>	<b>Position</b>	<b>Depth (ft)</b>	<b>Accum. Lengths</b>
-------------------------	--------------------	-------------------	-----------------	-------------------	-----------------------

Change Over Sub	1.00			3252.00	
Shut In Tool	5.00			3257.00	
Hydraulic tool	5.00			3262.00	
Packer	5.00			3267.00	20.00      Bottom Of Top Packer
Packer	4.00			3271.00	
Stubb	1.00			3272.00	
Recorder	0.00	8355	Outside	3272.00	
Recorder	0.00	8674	Inside	3272.00	
Perforations	25.00			3297.00	
Bullnose	3.00			3300.00	29.00      Bottom Packers & Anchor
<b>Total Tool Length:</b>	<b>49.00</b>				



**TRILOBITE  
TESTING, INC.**

# DRILL STEM TEST REPORT

**FLUID SUMMARY**

John O Farmer Inc  
PO Box 352  
Russell KS 67665-2635  
ATTN: Austin Klaus

**15 5s 20w Phillips,KS**  
**States A # 2**  
Job Ticket: 48659      **DST#: 1**  
Test Start: 2012.09.22 @ 14:15:00

## Mud and Cushion Information

Mud Type: Gel Chem	Cushion Type:	Oil API:	deg API
Mud Weight: 9.00 lb/gal	Cushion Length: ft	Water Salinity: 94000 ppm	
Viscosity: 56.00 sec/qt	Cushion Volume: bbl		
Water Loss: 7.55 in <sup>3</sup>	Gas Cushion Type:		
Resistivity: ohm.m	Gas Cushion Pressure: psig		
Salinity: 800.00 ppm			
Filter Cake: inches			

## Recovery Information

Recovery Table

Length ft	Description	Volume bbl
186.00	MCW 10% <i>m</i> 90% <i>w</i>	1.516
124.00	VSOMCW 2% <i>o</i> 10% <i>m</i> 88% <i>w</i>	1.739
50.00	OMCW 5% <i>o</i> 20% <i>m</i> 75% <i>w</i>	0.701
8.00	MCO 5% <i>m</i> 95% <i>o</i>	0.112
0.00	120 GIP	0.000

Total Length: 368.00 ft      Total Volume: 4.068 bbl  
Num Fluid Samples: 0      Num Gas Bombs: 0      Serial #:  
Laboratory Name:      Laboratory Location:  
Recovery Comments: .09 @ 67

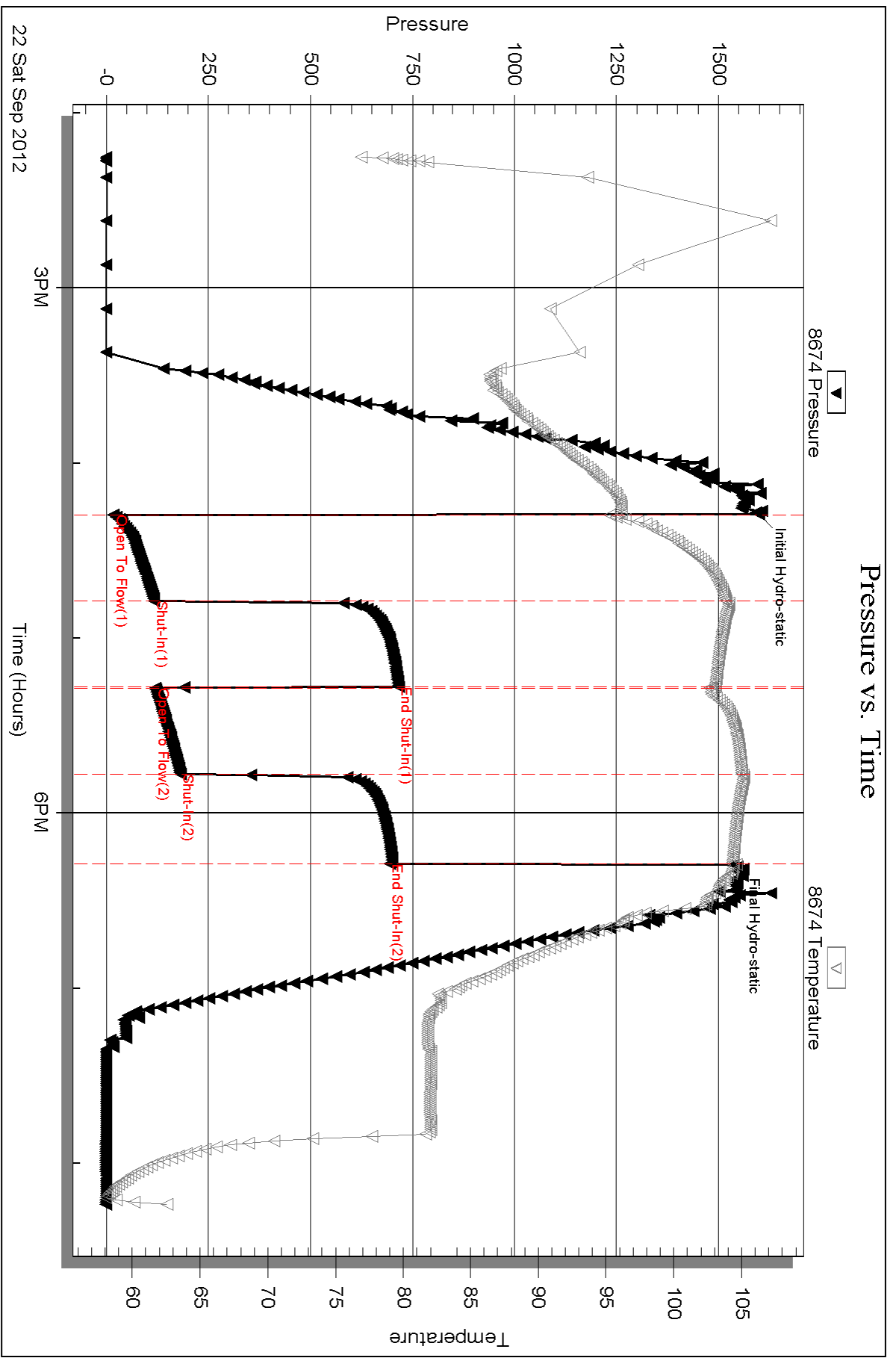
Serial #: 8674

Inside

John O Farmer Inc

States A # 2

DST Test Number: 1



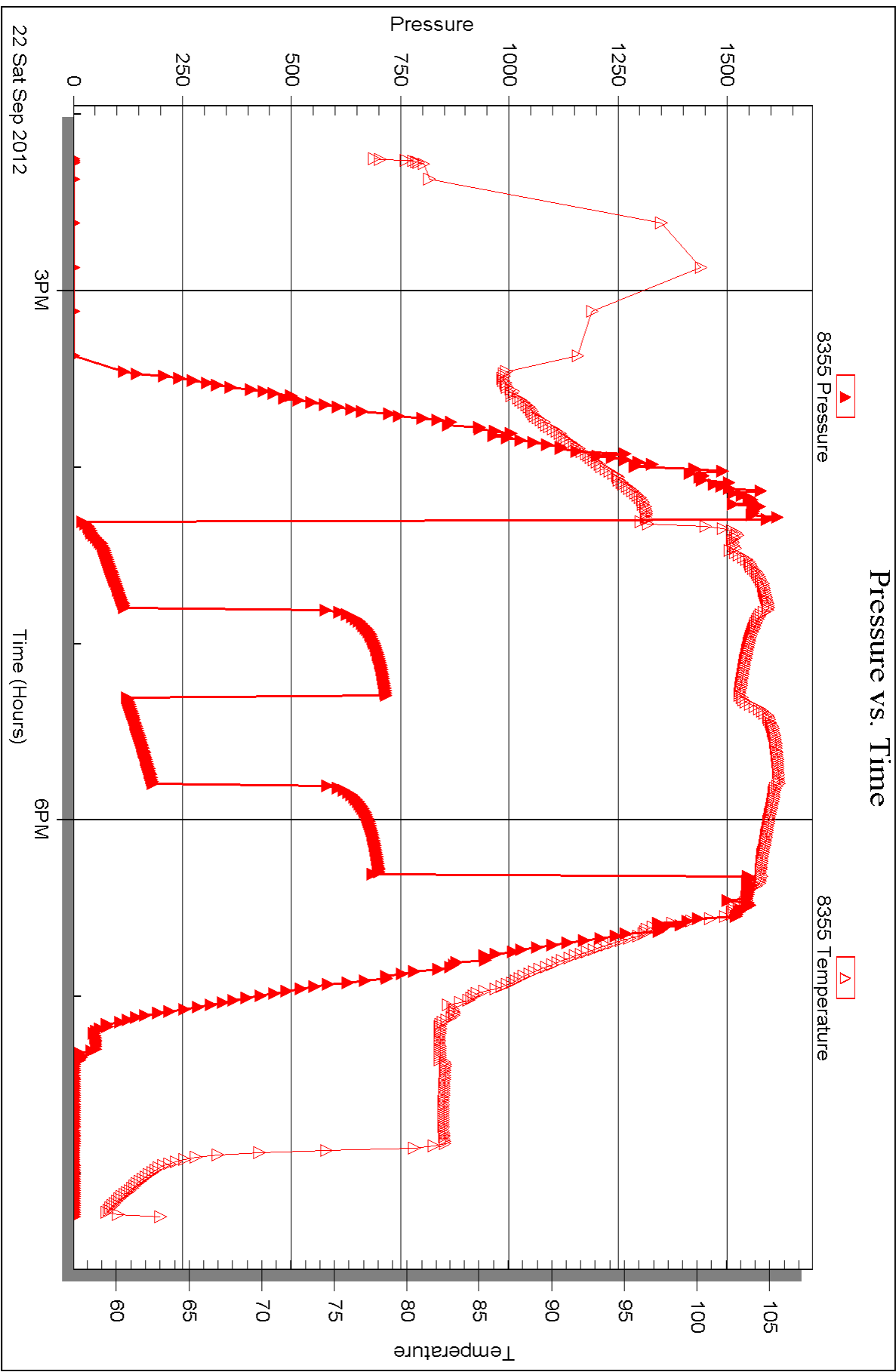
Serial #: 8355

Outside

John O Farmer Inc

States A # 2

DST Test Number: 1



Triobite Testing, Inc

Ref. No: 48659

Printed: 2012.09.27 @ 09:38:20



## DRILL STEM TEST REPORT

Prepared For: **John O Farmer Inc**

PO Box 352  
Russell KS 67665-2635

ATTN: Austin Klaus

### **States A # 2**

### **15 5s 20w Phillips,KS**

Start Date: 2012.09.23 @ 02:08:00

End Date: 2012.09.23 @ 07:07:00

Job Ticket #: 48660                      DST #: 2

Trilobite Testing, Inc

PO Box 362 Hays, KS 67601

ph: 785-625-4778 fax: 785-625-5620

Printed: 2012.09.27 @ 09:37:27





**TRILOBITE  
TESTING, INC.**

# DRILL STEM TEST REPORT

John O Farmer Inc  
PO Box 352  
Russell KS 67665-2635  
ATTN: Austin Klaus

**15 5s 20w Phillips,KS**

**States A # 2**

Job Ticket: 48660

**DST#: 2**

Test Start: 2012.09.23 @ 02:08:00

## GENERAL INFORMATION:

Formation: **LKC " D "**

Deviated: No Whipstock: 2104.00 ft (KB)

Time Tool Opened: 03:42:15

Time Test Ended: 07:07:00

Test Type: Conventional Bottom Hole (Reset)

Tester: Jim Svaty

Unit No: 58

**Interval: 3298.00 ft (KB) To 3318.00 ft (KB) (TVD)**

Reference Elevations: 2104.00 ft (KB)

Total Depth: 3318.00 ft (KB) (TVD)

2099.00 ft (CF)

Hole Diameter: 7.88 inches Hole Condition: Fair

KB to GR/CF: 5.00 ft

**Serial #: 8674**

**Inside**

Press @ Run Depth: 60.26 psig @ 3299.00 ft (KB)

Capacity: 8000.00 psig

Start Date: 2012.09.23

End Date:

2012.09.23

Last Calib.:

2012.09.23

Start Time: 02:08:05

End Time:

07:05:44

Time On Btm:

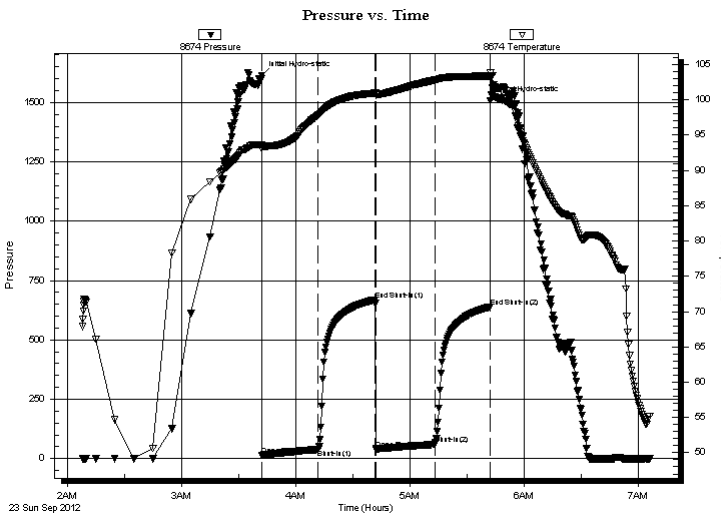
2012.09.23 @ 03:42:00

Time Off Btm:

2012.09.23 @ 05:42:15

**TEST COMMENT:** 30-IFP- Surface Blow Building to 1" in 10 min  
30-ISIP- No Blow  
30-FFP- Surface Blow in 3 min  
30-FSIP- No Blow

## PRESSURE SUMMARY



Time (Min.)	Pressure (psig)	Temp (deg F)	Annotation
0	1614.08	93.62	Initial Hydro-static
1	13.42	93.07	Open To Flow (1)
30	38.69	97.82	Shut-In(1)
60	668.95	100.94	End Shut-In(1)
60	40.94	100.65	Open To Flow (2)
91	60.26	102.80	Shut-In(2)
120	638.44	103.33	End Shut-In(2)
121	1506.91	103.88	Final Hydro-static

## Recovery

Length (ft)	Description	Volume (bbl)
70.00	WCM 40%w 60%m	0.34

\* Recovery from multiple tests

## Gas Rates

Choke (inches)	Pressure (psig)	Gas Rate (Mcf/d)





**TRILOBITE  
TESTING, INC.**

# DRILL STEM TEST REPORT

**TOOL DIAGRAM**

John O Farmer Inc  
PO Box 352  
Russell KS 67665-2635  
ATTN: Austin Klaus

**15 5s 20w Phillips,KS**  
**States A # 2**  
Job Ticket: 48660      **DST#: 2**  
Test Start: 2012.09.23 @ 02:08:00

**Tool Information**

Drill Pipe:	Length: 3190.00 ft	Diameter: 3.80 inches	Volume: 44.75 bbl	Tool Weight:	2500.00 lb
Heavy Wt. Pipe:	Length: 0.00 ft	Diameter: 2.75 inches	Volume: 0.00 bbl	Weight set on Packer:	25000.00 lb
Drill Collar:	Length: 120.00 ft	Diameter: 2.25 inches	Volume: 0.59 bbl	Weight to Pull Loose:	38000.00 lb
			<u>Total Volume: 45.34 bbl</u>	Tool Chased	0.00 ft
Drill Pipe Above KB:	32.00 ft			String Weight: Initial	34000.00 lb
Depth to Top Packer:	3298.00 ft			Final	34000.00 lb
Depth to Bottom Packer:	ft				
Interval between Packers:	20.00 ft				
Tool Length:	40.00 ft				
Number of Packers:	2	Diameter: 6.75 inches			

Tool Comments:

Tool Description	Length (ft)	Serial No.	Position	Depth (ft)	Accum. Lengths
Change Over Sub	1.00			3279.00	
Shut In Tool	5.00			3284.00	
Hydraulic tool	5.00			3289.00	
Packer	5.00			3294.00	20.00      Bottom Of Top Packer
Packer	4.00			3298.00	
Stubb	1.00			3299.00	
Recorder	0.00	8355	Outside	3299.00	
Recorder	0.00	8674	Inside	3299.00	
Perforations	16.00			3315.00	
Bullnose	3.00			3318.00	20.00      Bottom Packers & Anchor
<b>Total Tool Length:</b>	<b>40.00</b>				



**TRILOBITE**  
TESTING, INC.

# DRILL STEM TEST REPORT

**FLUID SUMMARY**

John O Farmer Inc  
PO Box 352  
Russell KS 67665-2635  
ATTN: Austin Klaus

**15 5s 20w Phillips,KS**  
**States A # 2**  
Job Ticket: 48660      **DST#: 2**  
Test Start: 2012.09.23 @ 02:08:00

## Mud and Cushion Information

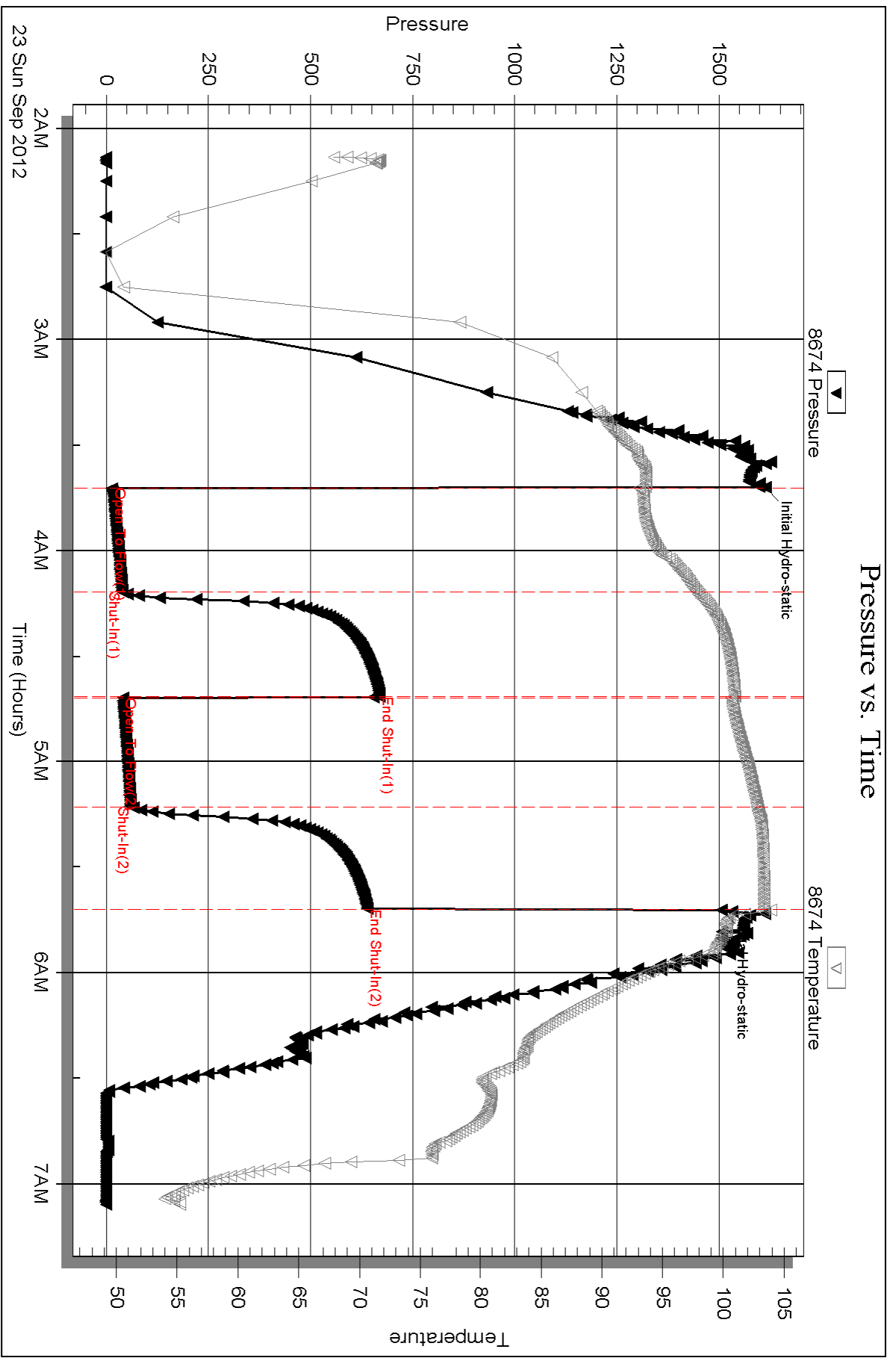
Mud Type: Gel Chem	Cushion Type:	Oil API:	deg API
Mud Weight: 9.00 lb/gal	Cushion Length: ft	Water Salinity:	67000 ppm
Viscosity: 56.00 sec/qt	Cushion Volume: bbl		
Water Loss: 7.55 in <sup>3</sup>	Gas Cushion Type:		
Resistivity: ohm.m	Gas Cushion Pressure: psig		
Salinity: 800.00 ppm			
Filter Cake: inches			

## Recovery Information

Recovery Table

Length ft	Description	Volume bbl
70.00	WCM 40%w 60%m	0.344

Total Length: 70.00 ft      Total Volume: 0.344 bbl  
 Num Fluid Samples: 0      Num Gas Bombs: 0      Serial #:  
 Laboratory Name:      Laboratory Location:  
 Recovery Comments: .18 @ 45



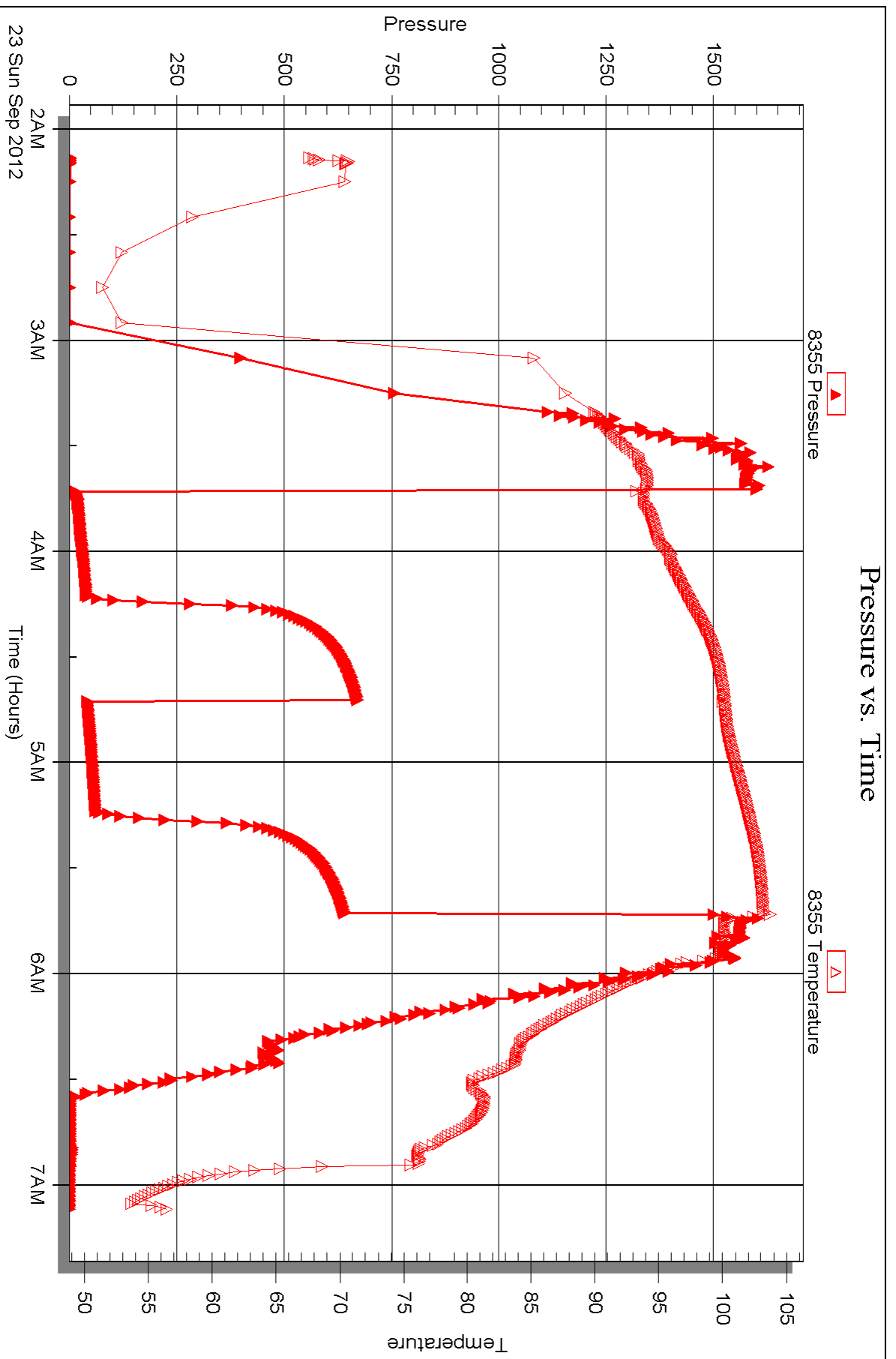
Serial #: 8355

Outside

John O Farmer Inc

States A # 2

DST Test Number: 2



Triobite Testing, Inc

Ref. No: 48660

Printed: 2012.09.27 @ 09:37:32



## DRILL STEM TEST REPORT

Prepared For: **John O Farmer Inc**

PO Box 352  
Russell KS 67665-2635

ATTN: Austin Klaus

### **States A # 2**

### **15 5s 20w Phillips,KS**

Start Date: 2012.09.24 @ 06:15:00

End Date: 2012.09.24 @ 14:11:00

Job Ticket #: 48661                      DST #: 3

Trilobite Testing, Inc

PO Box 362 Hays, KS 67601

ph: 785-625-4778 fax: 785-625-5620

Printed: 2012.09.27 @ 09:36:26



**TRILOBITE TESTING, INC.**

# DRILL STEM TEST REPORT

John O Farmer Inc  
 PO Box 352  
 Russell KS 67665-2635  
 ATTN: Austin Klaus

**15 5s 20w Phillips,KS**  
**States A # 2**  
 Job Ticket: 48661 **DST#: 3**  
 Test Start: 2012.09.24 @ 06:15:00

## GENERAL INFORMATION:

Formation: **Arbuckle**  
 Deviated: No Whipstock: 2104.00 ft (KB)  
 Time Tool Opened: 10:44:15  
 Time Test Ended: 14:11:00  
 Interval: **3519.00 ft (KB) To 3555.00 ft (KB) (TVD)**  
 Total Depth: 3600.00 ft (KB) (TVD)  
 Hole Diameter: 7.88 inches Hole Condition: Fair  
 Test Type: Conventional Straddle (Reset)  
 Tester: Jim Svaty  
 Unit No: 58  
 Reference Elevations: 2104.00 ft (KB)  
 2099.00 ft (CF)  
 KB to GR/CF: 5.00 ft

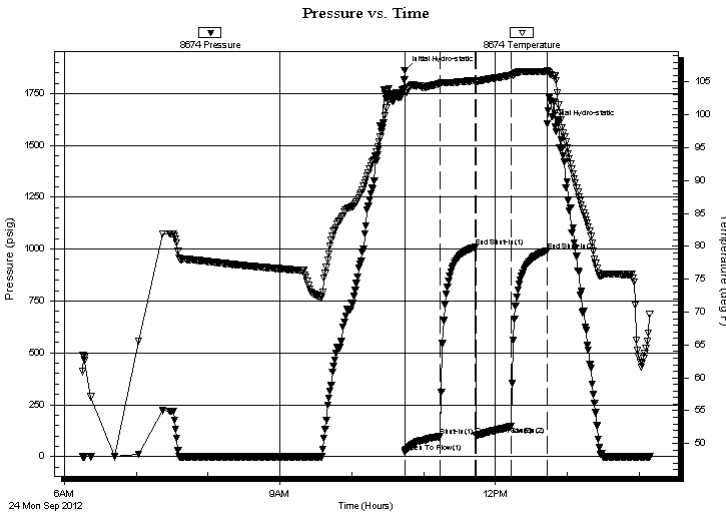
## Serial #: 8674

Inside

Press @ Run Depth: 144.94 psig @ 3520.00 ft (KB) Capacity: 8000.00 psig  
 Start Date: 2012.09.24 End Date: 2012.09.24 Last Calib.: 2012.09.24  
 Start Time: 06:15:05 End Time: 14:09:14 Time On Btm: 2012.09.24 @ 10:44:00  
 Time Off Btm: 2012.09.24 @ 12:43:15

TEST COMMENT: 30-IFP- BOB in 29 min  
 30-ISIP- Very Weak Surface Blow in 4 min  
 30-FFP- BOB in 21 min  
 30-FSIP- Weak Surface Blow in 1 min

## PRESSURE SUMMARY



Time (Min.)	Pressure (psig)	Temp (deg F)	Annotation
0	1861.13	103.89	Initial Hydro-static
1	22.56	103.29	Open To Flow (1)
30	97.07	104.75	Shut-In(1)
59	1009.18	105.22	End Shut-In(1)
60	102.74	104.90	Open To Flow (2)
89	144.94	106.01	Shut-In(2)
119	991.64	106.56	End Shut-In(2)
120	1601.95	106.75	Final Hydro-static

## Recovery

Length (ft)	Description	Volume (bbl)
120.00	O&WCM 5%o 40%w 55%m	0.59
62.00	OCM 10%o 90%m	0.87
112.00	MCO 45%m 55%o	1.57

\* Recovery from multiple tests

## Gas Rates

Choke (inches)	Pressure (psig)	Gas Rate (Mcf/d)







**TRILOBITE  
TESTING, INC.**

# DRILL STEM TEST REPORT

**TOOL DIAGRAM**

John O Farmer Inc  
PO Box 352  
Russell KS 67665-2635  
ATTN: Austin Klaus

**15 5s 20w Phillips,KS**  
**States A # 2**  
Job Ticket: 48661      **DST#: 3**  
Test Start: 2012.09.24 @ 06:15:00

**Tool Information**

Drill Pipe:	Length: 3407.00 ft	Diameter: 3.80 inches	Volume: 47.79 bbl	Tool Weight: 2500.00 lb
Heavy Wt. Pipe:	Length: 0.00 ft	Diameter: 2.75 inches	Volume: 0.00 bbl	Weight set on Packer: 25000.00 lb
Drill Collar:	Length: 120.00 ft	Diameter: 2.25 inches	Volume: 0.59 bbl	Weight to Pull Loose: 50000.00 lb
		Total Volume: 48.38 bbl		Tool Chased 0.00 ft
Drill Pipe Above KB:	28.00 ft			String Weight: Initial 36000.00 lb
Depth to Top Packer:	3519.00 ft			Final 40000.00 lb
Depth to Bottom Packer:	3555.00 ft			
Interval between Packers:	36.00 ft			
Tool Length:	101.00 ft			
Number of Packers:	2	Diameter: 6.75 inches		

Tool Comments:

Tool Description	Length (ft)	Serial No.	Position	Depth (ft)	Accum. Lengths
Change Over Sub	1.00			3500.00	
Shut In Tool	5.00			3505.00	
Hydraulic tool	5.00			3510.00	
Packer	5.00			3515.00	20.00 Bottom Of Top Packer
Packer	4.00			3519.00	
Stubb	1.00			3520.00	
Recorder	0.00	8355	Outside	3520.00	
Recorder	0.00	8674	Inside	3520.00	
Perforations	31.00			3551.00	
Blank Off Sub	1.00			3552.00	
Blank Spacing	3.00			3555.00	36.00 Tool Interval
Packer	0.00			3555.00	
Blank Spacing	2.00			3557.00	
Perforations	9.00			3566.00	
Recorder	0.00	8672	Below	3566.00	
Blank Spacing	31.00			3597.00	
Bullnose	3.00			3600.00	45.00 Bottom Packers & Anchor
<b>Total Tool Length:</b>	<b>101.00</b>				



**TRILOBITE  
TESTING, INC.**

# DRILL STEM TEST REPORT

**FLUID SUMMARY**

John O Farmer Inc  
PO Box 352  
Russell KS 67665-2635  
ATTN: Austin Klaus

**15 5s 20w Phillips,KS**  
**States A # 2**  
Job Ticket: 48661      **DST#: 3**  
Test Start: 2012.09.24 @ 06:15:00

## Mud and Cushion Information

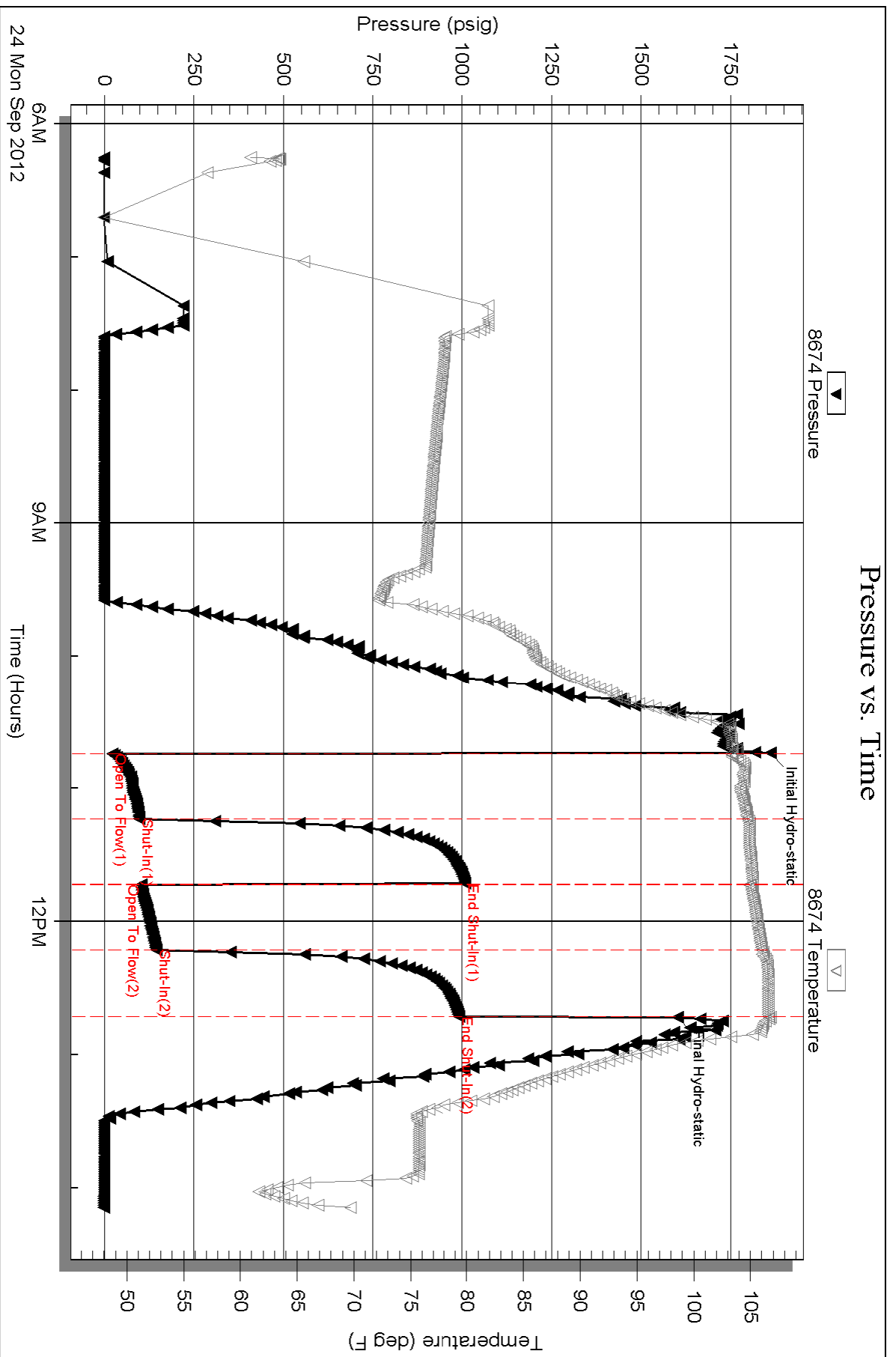
Mud Type: Gel Chem	Cushion Type:	Oil API:	deg API
Mud Weight: 9.00 lb/gal	Cushion Length: ft	Water Salinity:	ppm
Viscosity: 53.00 sec/qt	Cushion Volume: bbl		
Water Loss: 7.98 in <sup>3</sup>	Gas Cushion Type:		
Resistivity: ohm.m	Gas Cushion Pressure: psig		
Salinity: 1000.00 ppm			
Filter Cake: inches			

## Recovery Information

Recovery Table

Length ft	Description	Volume bbl
120.00	O&WCM 5%o 40%w 55%m	0.590
62.00	OCM 10%o 90%m	0.870
112.00	MCO 45%m 55%o	1.571

Total Length: 294.00 ft      Total Volume: 3.031 bbl  
Num Fluid Samples: 0      Num Gas Bombs: 0      Serial #:  
Laboratory Name:      Laboratory Location:  
Recovery Comments:

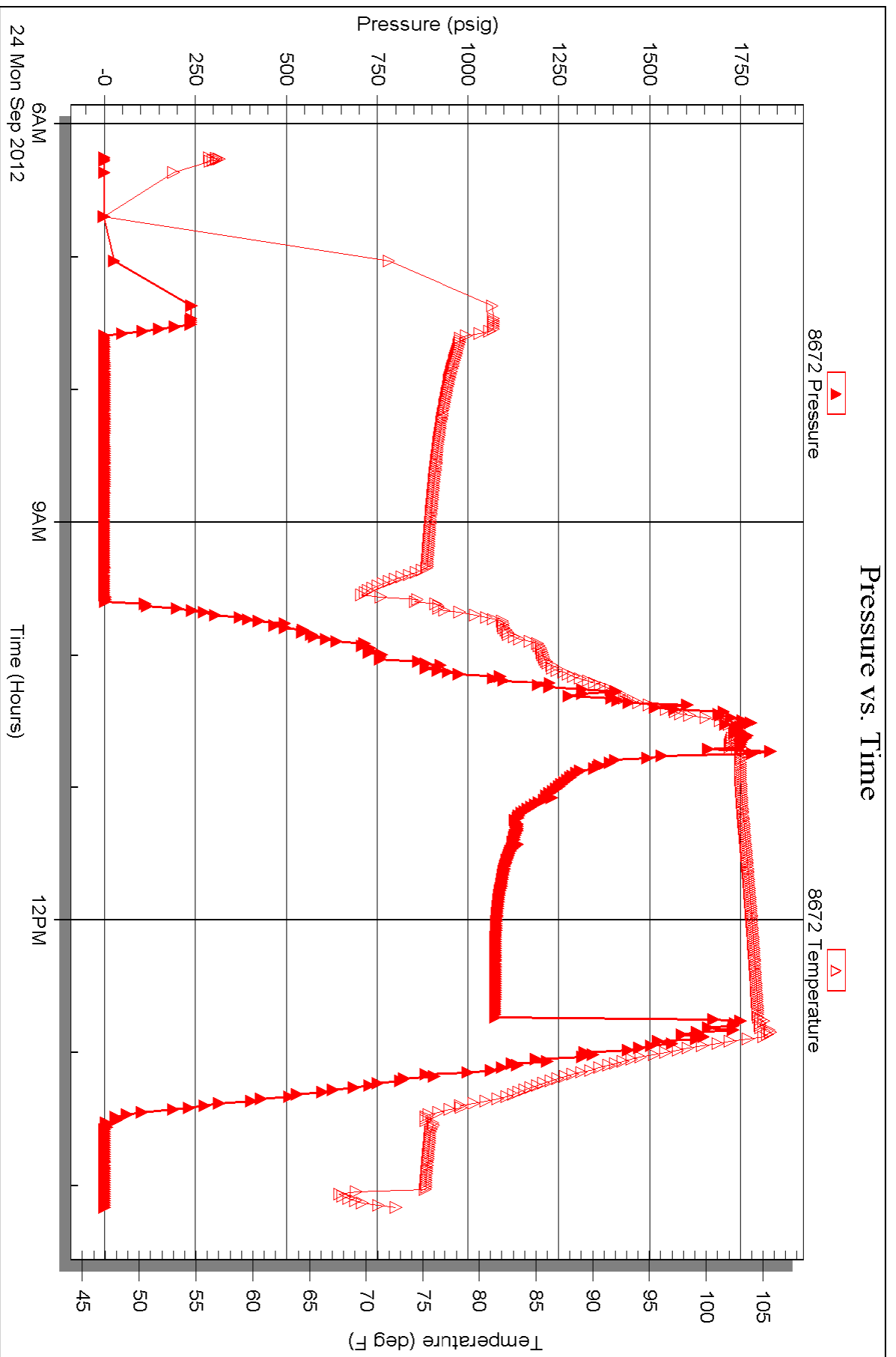


Serial #: 8672

Below (Straddled) Farmer Inc

States A # 2

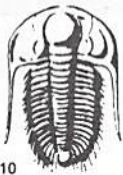
DST Test Number: 3



Triobite Testing, Inc

Ref. No: 48661

Printed: 2012.09.27 @ 09:36:31



# TRILOBITE TESTING INC.

P.O. Box 1733 • Hays, Kansas 67601

## Test Ticket

NO. 48659

Well Name & No. States A. #2 Test No. 1 Date 9-22-12  
 Company John O. Farmer, Inc. Elevation 2104 KB 2099 GL  
 Address 370 W. WICHITA Ave Box 352 Russell KS 67665-2635  
 Co. Rep / Geo. Austin Klaus Rig WW-6  
 Location: Sec. 15 Twp. 5<sup>s</sup> Rge. 20<sup>w</sup> Co. Phillips State KS

Interval Tested 3271-3300 Zone Tested LKC "C"  
 Anchor Length 29' Drill Pipe Run 3161 Mud Wt. 8.9  
 Top Packer Depth 3266 Drill Collars Run 120 Vis 56  
 Bottom Packer Depth 3271 Wt. Pipe Run Ø WL 7.6  
 Total Depth 3300 Chlorides 800 ppm System LCM 2 1/2

Blow Description IFP - BOB in 14 min  
ISIP - Weak Surface Blow Dried in 25 min.  
FFP - BOB in 16 min.  
FSP - Very Weak Surface Blow Dried 10 min.

Rec	Feet of	%gas	%oil	%water	%mud
186	m c w		90	10	
124	VSO m c w	2	88	10	
50	o m c w	5	75	20	
8	m c o	95		5	
120	IFP				

Rec Total 368 BHT 104 Gravity API RW .09 @ 67 ° F Chlorides 94000 ppm  
 (A) Initial Hydrostatic 1599  Test 1150 T-On Location 12:39  
 (B) First Initial Flow 17  Jars T-Started 14:15  
 (C) First Final Flow 117  Safety Joint T-Open 16:19  
 (D) Initial Shut-In 714  Circ Sub T-Pulled 18:19  
 (E) Second Initial Flow 119  Hourly Standby T-Out 20:15  
 (F) Second Final Flow 181  Mileage 132 RT 204.60  
 (G) Final Shut-In 693  Sampler  
 (H) Final Hydrostatic 1535  Straddle  Ruined Shale Packer

Initial Open 30  Shale Packer  Ruined Packer  
 Initial Shut-In 30  Extra Packer  Extra Copies  
 Final Flow 30  Extra Recorder Sub Total 0  
 Final Shut-In 30  Day Standby Total 1354.60  
 Accessibility MP/DST Disc't  
 Sub Total 1354.60

Approved By \_\_\_\_\_ Our Representative [Signature]

Trilobite Testing Inc. shall not be liable for damaged of any kind of the property or personnel of the one for whom a test is made, or for any loss suffered or sustained, directly or indirectly, through the use of its equipment, or its statements or opinion concerning the results of any test, tools lost or damaged in the hole shall be paid for at cost by the party for whom the test is made.





# TRILOBITE TESTING INC.

P.O. Box 1733 • Hays, Kansas 67601

## Test Ticket

NO. 48660

4/10

Well Name & No. States A #2 Test No. 2 Date 9-23-12  
 Company John O. Farmer Inc. Elevation 2104 KB 2099 GL  
 Address 370 W. Wichita Ave Box 352 Russell Ks. 67665-2635  
 Co. Rep / Geo. Austin Klaus Rig WW-6  
 Location: Sec. 15 Twp. 5 S Rge. 20 W Co. Phillips State KS

Interval Tested 3298-3318 Zone Tested LKC "D"  
 Anchor Length 20 Drill Pipe Run 3190 Mud Wt. 8.9  
 Top Packer Depth 3293 Drill Collars Run 120 Vis 56  
 Bottom Packer Depth 3298 Wt. Pipe Run 0 WL 7.6  
 Total Depth 3318 Chlorides 800 ppm System LCM 2 1/2  
 Blow Description FFP-Surface Blow Building to line in 10 min  
ISIP- No Blow  
FFP-Surface Blow in 3 min  
FSIP- No Blow

Rec	Feet of	%gas	%oil	%water	%mud
<u>70</u>	<u>WCM</u>			<u>40</u>	<u>60</u>
Rec	Feet of	%gas	%oil	%water	%mud
Rec	Feet of	%gas	%oil	%water	%mud
Rec	Feet of	%gas	%oil	%water	%mud

Rec Total 70 BHT 103 Gravity API RW 18 @ 45° F Chlorides 67,000 ppm  
 (A) Initial Hydrostatic 1614  Test 1150 T-On Location 02:07  
 (B) First Initial Flow 13  Jars \_\_\_\_\_ T-Started 02:08  
 (C) First Final Flow 38  Safety Joint \_\_\_\_\_ T-Open 03:43  
 (D) Initial Shut-In 668  Circ Sub \_\_\_\_\_ T-Pulled 05:43  
 (E) Second Initial Flow 40  Hourly Standby \_\_\_\_\_ T-Out 07:07  
 (F) Second Final Flow 60  Mileage 204.60 Comments \_\_\_\_\_  
 (G) Final Shut-In 638  Sampler \_\_\_\_\_  
 (H) Final Hydrostatic 1506  Straddle \_\_\_\_\_  Ruined Shale Packer \_\_\_\_\_  
 Initial Open 30  Shale Packer \_\_\_\_\_  Ruined Packer \_\_\_\_\_  
 Initial Shut-In 30  Extra Packer \_\_\_\_\_  Extra Copies \_\_\_\_\_  
 Final Flow 30  Extra Recorder \_\_\_\_\_ Sub Total 0  
 Final Shut-In 30  Day Standby \_\_\_\_\_ Total 1354.60  
 Accessibility \_\_\_\_\_ MP/DST Disc't \_\_\_\_\_  
 Sub Total 1354.60

Approved By \_\_\_\_\_

Our Representative [Signature]

TriLOBITE TESTING Inc. shall not be liable for damaged of any kind of the property or personnel of the one for whom a test is made, or for any loss suffered or sustained, directly or indirectly, through the use of its equipment, or its statements or opinion concerning the results of any test, tools lost or damaged in the hole shall be paid for at cost by the party for whom the test is made.



# TRILOBITE TESTING INC.

P.O. Box 1733 • Hays, Kansas 67601

## Test Ticket

NO. 48661

Well Name & No. States A #2 Test No. 3 Date 9-24-12  
 Company John O. Farmer INC Elevation 2104 KB 2099 GL  
 Address 370 W. Wichita Ave Box 352 Russell Ks. 67665-2635  
 Co. Rep / Geo. Austin Klaus Rig WW-6  
 Location: Sec. 15 Twp. 55 Rge. 20<sup>W</sup> Co. Phillips State Ks

Interval Tested 3519-3555 Zone Tested Arbuckle  
 Anchor Length 36' (45' Tail Pipe) Drill Pipe Run 3407 Mud Wt. 9  
 Top Packer Depth 3519 Drill Collars Run 120 Vis 53  
 Bottom Packer Depth 3555 Wt. Pipe Run 0 WL 8.0  
 Total Depth 3600 Chlorides 1000 ppm System LCM 2

Blow Description IFP- BOB 29min  
ISIP- Very Weak Surface Blow in 4min  
FFP- BOB 21min  
FSIP- Weak Surface Blow in 1min

Rec	Feet of	%gas	%oil	%water	%mud
<u>120</u>	<u>0 &amp; wcm</u>	<u>5</u>	<u>40</u>	<u>55</u>	
<u>62</u>	<u>OCM</u>	<u>10</u>		<u>90</u>	
<u>112</u>	<u>mco</u>	<u>55</u>		<u>45</u>	
Rec	Feet of	%gas	%oil	%water	%mud
Rec	Feet of	%gas	%oil	%water	%mud

Rec Total 294 BHT 106 Gravity \_\_\_\_\_ API RW \_\_\_\_\_ @ \_\_\_\_\_ °F Chlorides \_\_\_\_\_ ppm

(A) Initial Hydrostatic 1861  Test 1150 T-On Location 06:00  
 (B) First Initial Flow 22  Jars \_\_\_\_\_ T-Started 06:15  
 (C) First Final Flow 97  Safety Joint \_\_\_\_\_ T-Open 10:45  
 (D) Initial Shut-In 1009  Circ Sub \_\_\_\_\_ T-Pulled 12:45  
 (E) Second Initial Flow 102  Hourly Standby \_\_\_\_\_ T-Out 14:11  
 (F) Second Final Flow 144  Mileage 204.60 Comments \_\_\_\_\_  
 (G) Final Shut-In 991  Sampler \_\_\_\_\_  
 (H) Final Hydrostatic 1601  Straddle 600  Ruined Shale Packer \_\_\_\_\_

Initial Open 30  Shale Packer \_\_\_\_\_  Ruined Packer \_\_\_\_\_  
 Initial Shut-In 30  Extra Packer \_\_\_\_\_  Extra Copies \_\_\_\_\_  
 Final Flow 30  Extra Recorder \_\_\_\_\_ Sub Total 0  
 Final Shut-In 30  Day Standby \_\_\_\_\_ Total 1954.60  
 Accessibility \_\_\_\_\_ MP/DST Disc't \_\_\_\_\_  
 Sub Total 1954.60

Approved By \_\_\_\_\_ Our Representative [Signature]

TriLOBite Testing Inc. shall not be liable for damaged of any kind of the property or personnel of the one for whom a test is made, or for any loss suffered or sustained, directly or indirectly, through the use of its equipment, or its statements or opinion concerning the results of any test, tools lost or damaged in the hole shall be paid for at cost by the party for whom the test is made.