



Pro-Stake LLC
 Oil Field & Construction Site Staking
 P.O. Box 2324
 Garden City, Kansas 67846
 Office/Fax: (620) 276-6159
 Cell: (620) 272-1499



002026
 PLAT NO.

10583
 INVOICE NO.

Cobalt Energy, LLC
 OPERATOR

DB Unit "A" #1-14
 LEASE NAME

Ness County, KS
 COUNTY

14 20s 26w
 Sec. Twp. Rng.

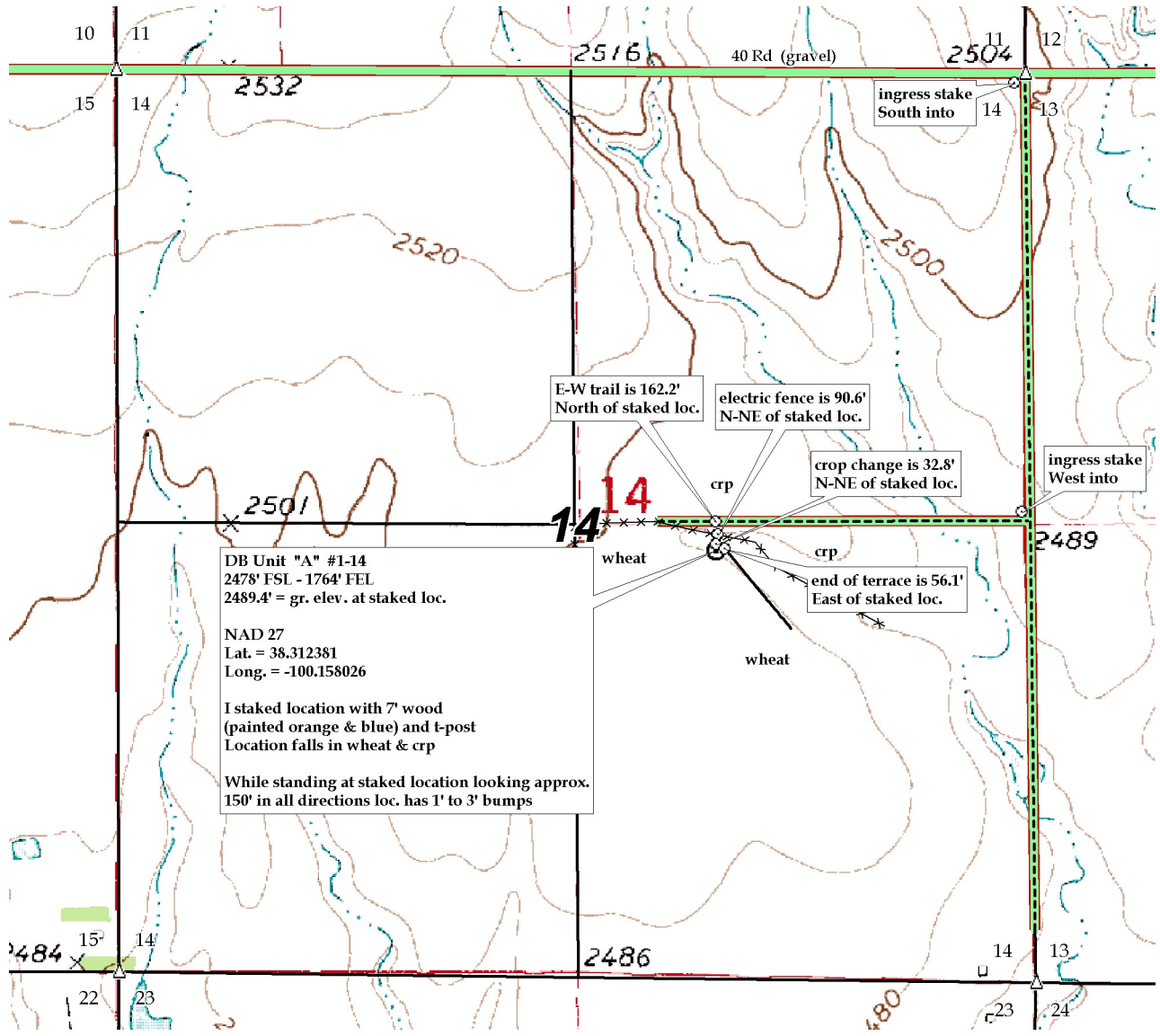
2478' FSL - 1764' FEL
 LOCATION SPOT

SCALE: 1" = 1000'
 DATE: Jan 6th, 2013
 MEASURED BY: Ben R.
 DRAWN BY: Luke R.
 AUTHORIZED BY: Nick H.

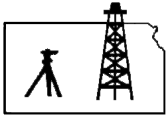


GR. ELEVATION: **2489.4'**
Directions: From approx. 0.5 mile North of Beeler Ks, at the intersection of Hwy 96 & C Rd South – Now go 9 miles South on C Rd – Now go 2 mile East on 40 Rd to the NE corner of section 14-20s-26w & ingress stake South into – Now go 0.5 mile South on trail to ingress stake West into – Now go 0.3 mile West on trail – Now go approx. 130' South through crp – Now go 33' S-SW through wheat into staked location.
Final ingress must be verified with land owner or Operator.

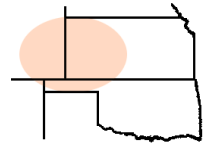
***This drawing does not constitute a monumented survey or a land survey plat.
 This drawing is for construction purposes only.***



DB Unit "A" #1-14
 2478' FSL - 1764' FEL
 2489.4' = gr. elev. at staked loc.
 NAD 27
 Lat. = 38.312381
 Long. = -100.158026
 I staked location with 7' wood (painted orange & blue) and t-post
 Location falls in wheat & crp
 While standing at staked location looking approx. 150' in all directions loc. has 1' to 3' bumps



Pro-Stake LLC
Oil Field & Construction Site Staking
 P.O. Box 2324
 Garden City, Kansas 67846
 Office/Fax: (620) 276-6159
 Cell: (620) 272-1499



002026
 PLAT NO.

10583
 INVOICE NO.

Cobalt Energy, LLC
 OPERATOR

DB Unit "A" #1-14
 LEASE NAME

Ness County, KS
 COUNTY

14 20s 26w
 Sec. Twp. Rng.

2478' FSL - 1764' FEL
 LOCATION SPOT

SCALE: 1" = 1000'
 DATE: Jan 6th, 2013
 MEASURED BY: Ben R.
 DRAWN BY: Luke R.
 AUTHORIZED BY: Nick H.

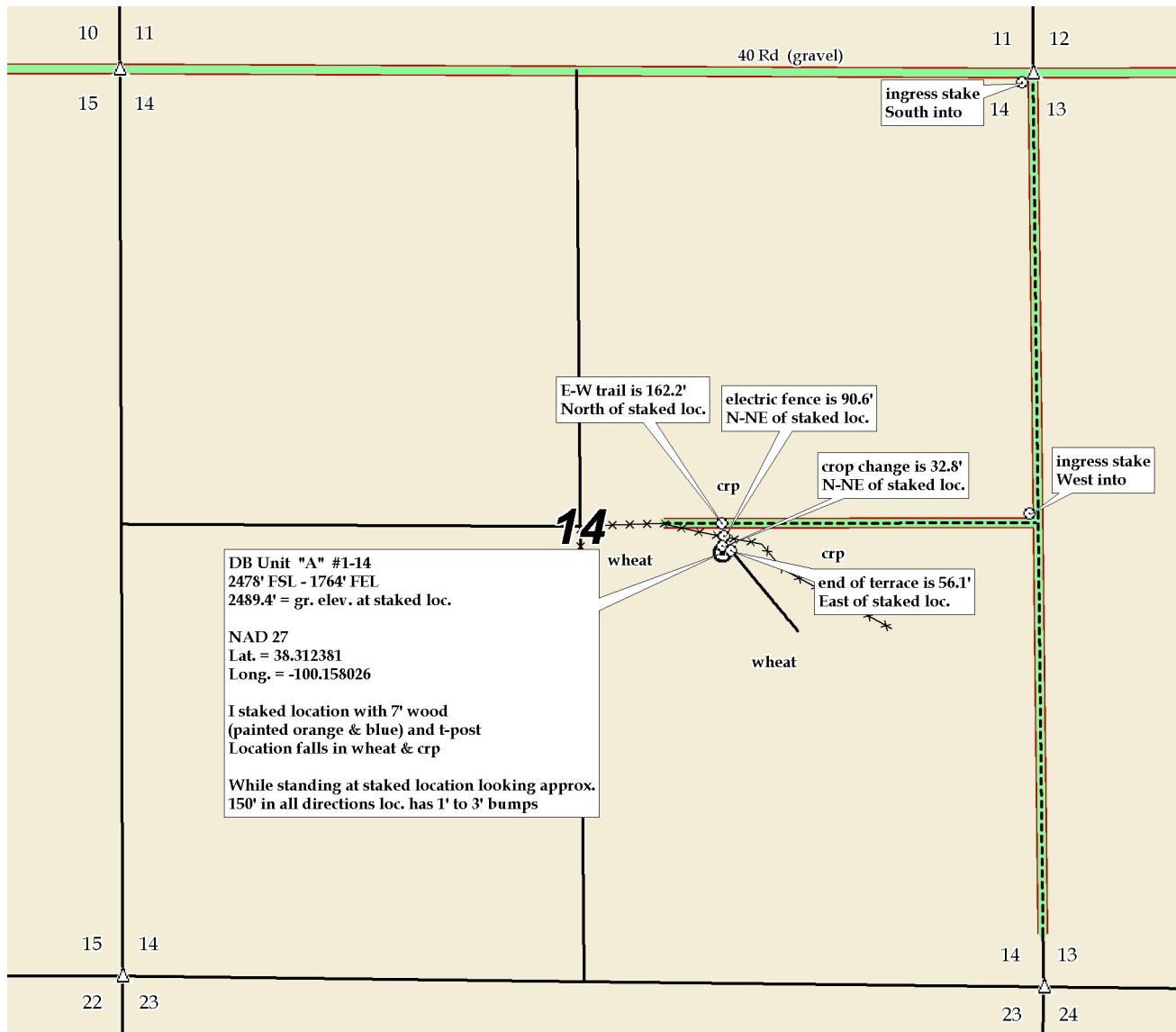


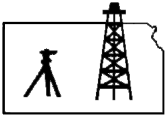
GR. ELEVATION: **2489.4'**

Directions: From approx. 0.5 mile North of Beeler Ks, at the intersection of Hwy 96 & C Rd South – Now go 9 miles South on C Rd – Now go 2 mile East on 40 Rd to the NE corner of section 14-20s-26w & ingress stake South into – Now go 0.5 mile South on trail to ingress stake West into – Now go 0.3 mile West on trail – Now go approx. 130° South through crp – Now go 33' S-SW through wheat into staked location.

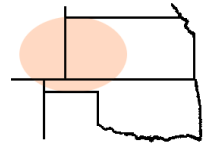
Final ingress must be verified with land owner or Operator.

This drawing does not constitute a monumented survey or a land survey plat.
This drawing is for construction purposes only.





Pro-Stake LLC
 Oil Field & Construction Site Staking
 P.O. Box 2324
 Garden City, Kansas 67846
 Office/Fax: (620) 276-6159
 Cell: (620) 272-1499



002026
 PLAT NO.

10583
 INVOICE NO.

Cobalt Energy, LLC
 OPERATOR

DB Unit "A" #1-14
 LEASE NAME

Ness County, KS
 COUNTY

14 20s 26w
 Sec. Twp. Rng.

2478' FSL - 1764' FEL
 LOCATION SPOT

SCALE: N/A
 DATE: Jan 6th, 2013
 MEASURED BY: Ben R.
 DRAWN BY: Luke R.
 AUTHORIZED BY: Nick H.



GR. ELEVATION: **2489.4'**

Directions: From approx. 0.5 mile North of Beeler Ks, at the intersection of Hwy 96 & C Rd South – Now go 9 miles South on C Rd – Now go 2 mile East on 40 Rd to the NE corner of section 14-20s-26w & ingress stake South into – Now go 0.5 mile South on trail to ingress stake West into – Now go 0.3 mile West on trail – Now go approx. 130' South through crp – Now go 33' S-SW through wheat into staked location.

Final ingress must be verified with land owner or Operator.

This drawing does not constitute a monumented survey or a land survey plat. This drawing is for construction purposes only.

