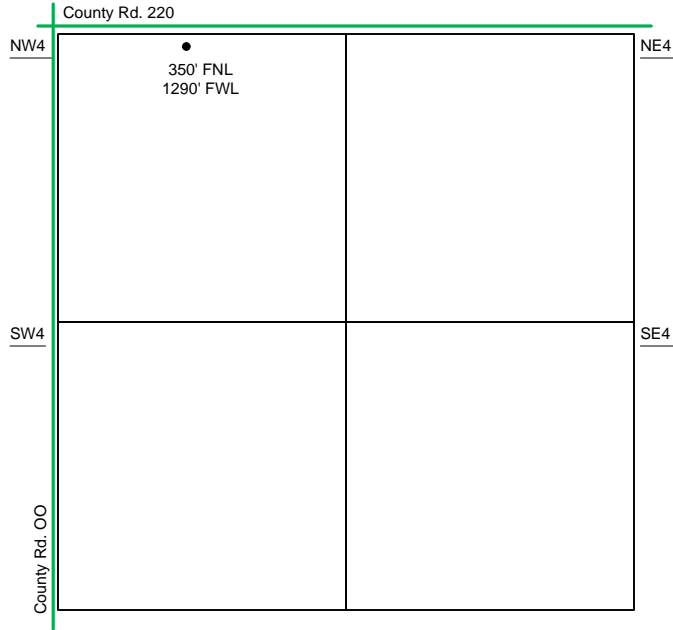
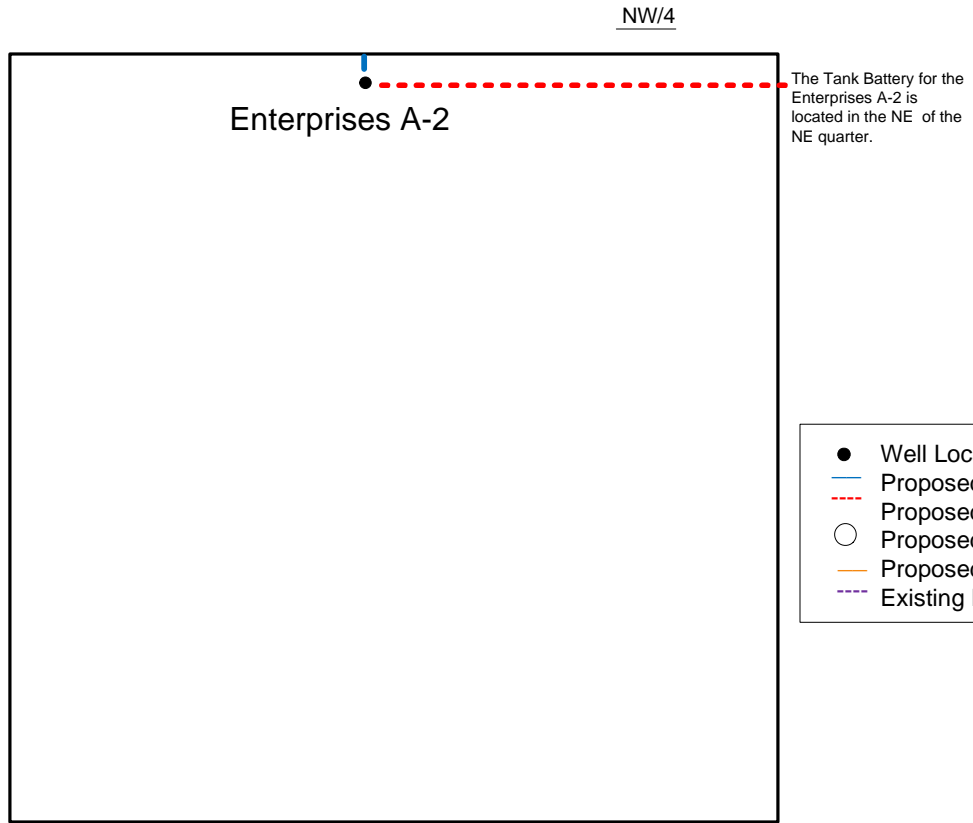


Proposed Plan of Construction
Enterprises A-2
Sec 21 T30S-R32W
Haskell County, KS



Sec 21 - T30S - R32W



Proposed Details of
NW/4 Sec 21 -T30S -R32W

Note-Drawing **Not** to Scale

Proposed Site Diagram
Enterprises A-2
January 15, 2013

