



DRILL STEM TEST REPORT

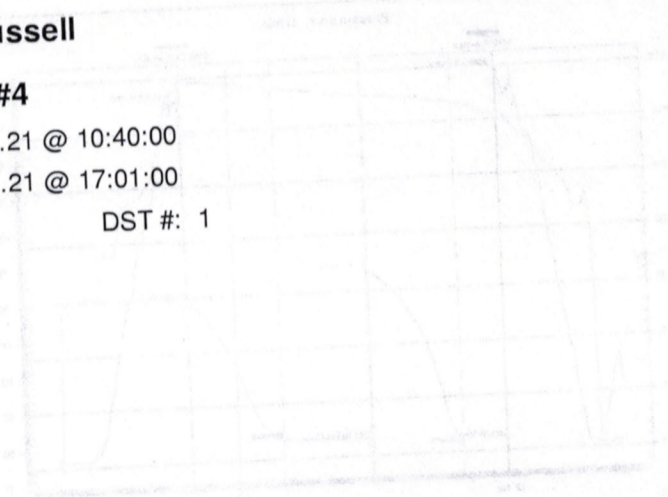
Prepared For: **Craig Ward dba Craig Oil Company**
 15 S Main Russell KS 67665+2901

ATTN: Francis Whisler

23-15-14 Russell

H.J Mai #4

Start Date: 2011.11.21 @ 10:40:00
 End Date: 2011.11.21 @ 17:01:00
 Job Ticket #: 18658 DST #: 1



Superior Testers Enterprises LLC
 PO Box 138 Great Bend KS 67530
 1-800-792-6902

Craig Ward dba Craig Oil Company
 H.J Mai #4
 23-15-14 Russell

DRILL STEM TEST REPORT



Craig Ward dba Craig Oil Company
 15 S Main Russell KS 67665+2901
 ATTN: Francis Whisler

H.J Mai #4
 23-15-14 Russell
 Job Ticket: 18658
 DST#: 1

Test Start: 2011.11.21 @ 10:40:00

GENERAL INFORMATION:

Formation: Arbuckle
 Deviated: No
 Whipstock: No
 Time Tool Opened: 12:00:30
 Time Test Ended: 17:01:00
 Interval: 3332.00 ft (KB) To 3366.00 ft (KB) (TVD)
 Total Depth: 3366.00 ft (KB) (TVD)
 Hole Diameter: 7.88 inchesHole Condition: Fair
 Serial #: 8419
 Press@RunDepth: 87.98 psia @
 3362.00 ft (KB)
 Start Date: 2011.11.21
 End Date: 2011.11.21
 End Time: 22:40:00
 Capacity: 5000.00 psia
 Last Calib.: 2011.11.22
 Time On Btm: 2011.11.21 @ 23:59:30
 Time Off Btm: 2011.11.22 @ 03:32:30

TEST COMMENT:

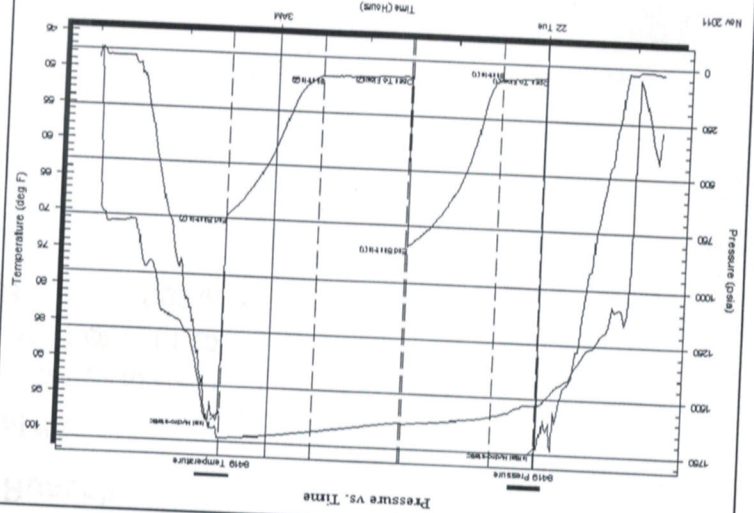
1st Opening 30 Minutes-Fair blow built 6 1/2 inches into water in 30 minutes
 1st Shut-in 60 Minutes-No blow back
 2nd Opening 60 Minutes-Weak blow built 7 1/2 inches into water in 60 minutes
 2nd Shut-in 60 Minutes-No blow back

PRESSURE SUMMARY

Time (Min.)	Pressure (psia)	Temp (deg F)	Annotation
0	1716.39	94.77	Initial Hydro-static
1	58.76	94.54	Open To Flow (1)
31	70.93	96.36	Shut-in(1)
91	839.09	97.87	End Shut-in(1)
92	76.51	97.80	Open To Flow (2)
151	87.98	99.52	Shut-in(2)
212	736.59	100.81	End Shut-in(2)
213	1618.28	100.84	Final Hydro-static

Gas Rates

Choke (Inches)	Pressure (psia)	Gas Rate (Mc/d)

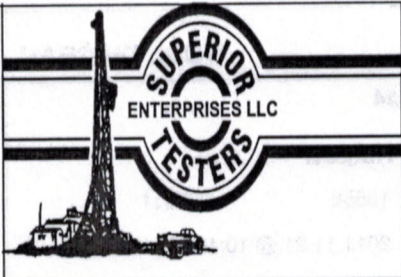


Recovery

Length (ft)	Description	Volume (bbl)
30.00	Clean gassy oil 10%gas 90%oil	0.42
60.00	Muddy Oil 20%oil 80% mud	0.84
0.00	Gravity Oil 42	0.00

Ref. No: 18658

Superior Testers Enterprises LLC



DRILL STEM TEST REPORT

Craig Ward dba Craig Oil Company

H.J Mai #4

15 S Main Russell KS 67665+2901

23-15-14 Russell

Job Ticket: 18658

DST#: 1

ATTN: Francis Whisler

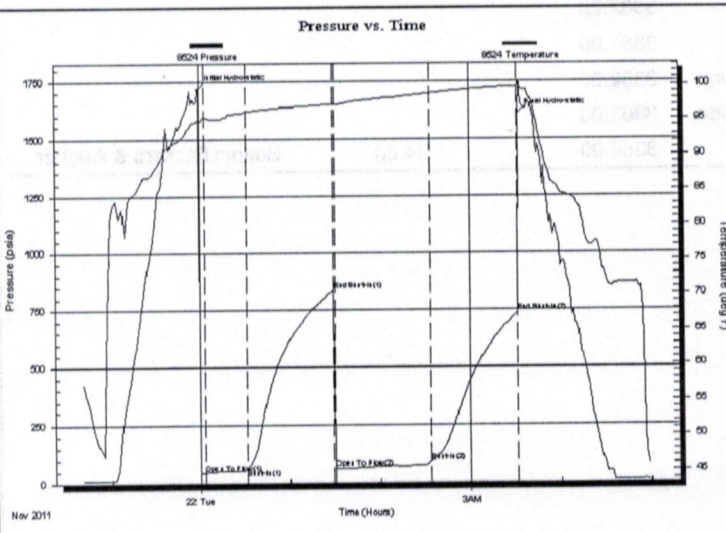
Test Start: 2011.11.21 @ 10:40:00

GENERAL INFORMATION:

Formation: **Arbuckle**
 Deviated: No Whipstock: ft (KB)
 Time Tool Opened: 12:00:30
 Time Test Ended: 17:01:00
 Test Type: Conventional Bottom Hole (Initial)
 Tester: Jared Scheck
 Unit No: 3320-GB-
 Interval: **3332.00 ft (KB) To 3366.00 ft (KB) (TVD)**
 Reference Elevations: 1917.00 ft (KB)
 Total Depth: 3366.00 ft (KB) (TVD)
 1910.00 ft (CF)
 Hole Diameter: 7.88 inches Hole Condition: Fair
 KB to GR/CF: 7.00 ft

Serial #: 8524 Outside
 Press@RunDepth: 738.50 psia @ 3363.00 ft (KB) Capacity: 5000.00 psia
 Start Date: 2011.11.21 End Date: 2011.11.22 Last Calib.: 2011.11.22
 Start Time: 22:40:00 End Time: 05:00:00 Time On Btm: 2011.11.21 @ 23:59:00
 Time Off Btm: 2011.11.22 @ 03:32:00

TEST COMMENT: 1st Opening 30 Minutes-Fair blow built 6 1/2 inches into water in 30 minutes
 1st Shut-in 60 Minutes-No blow back
 2nd Opening 60 Minutes-Weak blow built 7 1/2 inches into water in 60 minutes
 2nd Shut-In 60 Minutes-No blow back



PRESSURE SUMMARY

Time (Min.)	Pressure (psia)	Temp (deg F)	Annotation
0	1718.16	94.98	Initial Hydro-static
4	47.68	95.26	Open To Flow (1)
33	66.07	96.10	Shut-In(1)
91	835.46	97.22	End Shut-In(1)
92	62.59	97.17	Open To Flow (2)
155	90.41	98.77	Shut-In(2)
212	738.50	99.79	End Shut-In(2)
213	1607.90	100.11	Final Hydro-static

Recovery

Length (ft)	Description	Volume (bbl)
30.00	Clean gassy oil 10%gas 90%oil	0.42
60.00	Muddy Oil 20%oil 80%mud	0.84
0.00	Gravity Oil 42	0.00

Gas Rates

	Choke (inches)	Pressure (psia)	Gas Rate (Mcf/d)



Craig Ward dba Craig Oil Company
 15 S Main Russell KS 67665+2901

H.J Mai #4
 23-15-14 Russell

Job Ticket: 18658
 DST#: 1
 Test Start: 2011.11.21 @ 10:40:00

ATTN: Francis Whisler

TOOL DIAGRAM

DRILL STEM TEST REPORT

Tool Information

Drill Pipe:	Length: 3319.00 ft	Diameter: 3.80 inches	Volume: 46.56 bbl	Tool Weight: 1000.00 lb
Heavy Wt. Pipe:	Length: 0.00 ft	Diameter: 0.00 inches	Volume: 0.00 bbl	Weight set on Packer: 20000.00 lb
Drill Collar:	Length: 0.00 ft	Diameter: 0.00 inches	Volume: 0.00 bbl	Weight to Pull Loose: 38000.00 lb
Drill Pipe Above KB:		Total Volume: 46.56 bbl		
Depth to Top Packer:		Tool Chased		
Depth to Bottom Packer:		String Weight: Initial 36000.00 lb		
Interval between Packers:		Final 36000.00 lb		
Tool Length:		0.00 ft		
Number of Packers:		3332.00 ft		
Diameter:		Depth to Top Packer: 3332.00 ft		
2		Depth to Bottom Packer: 34.00 ft		
6.75 inches		Interval between Packers: 34.00 ft		
Tool Comments:		Tool Length: 54.00 ft		

Tool Description

Tool Description	Length (ft)	Serial No.	Position	Depth (ft)	Accum. Lengths
SHUT-IN Tool	5.00		Inside	3317.00	
Hydraulic Tool	5.00			3322.00	
Packer	5.00			3327.00	20.00
Packer	5.00			3332.00	
Anchor	29.00			3361.00	
Recorder	1.00	8419	Inside	3362.00	
Recorder	1.00	8524	Outside	3363.00	
Bullnose	3.00			3366.00	
Total Tool Length:					54.00
Bottom Packers & Anchor					34.00
Bottom Of Top Packer					20.00



DRILL STEM TEST REPORT

FLUID SUMMARY

Craig Ward dba Craig Oil Company

H.J Mai #4

15 S Main Russell KS 67665+2901

23-15-14 Russell

Job Ticket: 18658

DST#: 1

ATTN: Francis Whisler

Test Start: 2011.11.21 @ 10:40:00

Mud and Cushion Information

Mud Type: Gel Chem
 Mud Weight: 9.00 lb/gal
 Viscosity: 51.00 sec/qt
 Water Loss: 8.80 in³
 Resistivity: 4000.00 ohm.m
 Salinity: ppm
 Filter Cake: 1.00 inches

Cushion Type:
 Cushion Length: ft
 Cushion Volume: bbl
 Gas Cushion Type:
 Gas Cushion Pressure: psia

Oil API: deg API
 Water Salinity: ppm

Recovery Information

Recovery Table

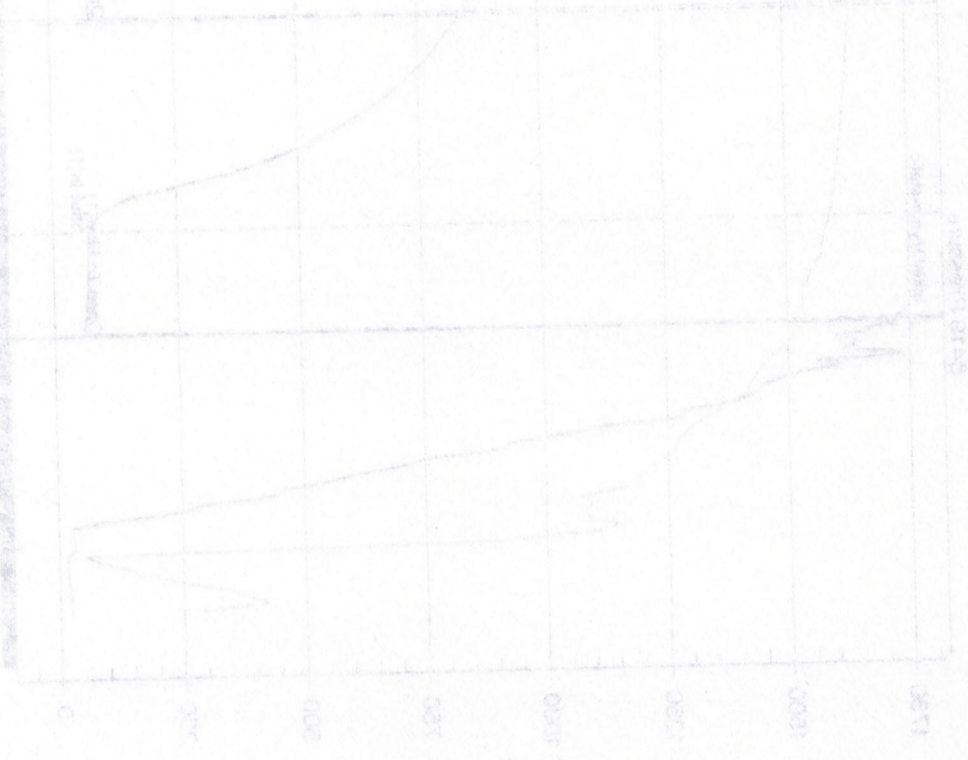
Length ft	Description	Volume bbl
30.00	Clean gassy oil 10%gas 90%oil	0.421
60.00	Muddy Oil 20%oil 80%mud	0.842
0.00	Gravity Oil 42	0.000

Total Length: 90.00 ft Total Volume: 1.263 bbl

Num Fluid Samples: 0 Num Gas Bombs: 0 Serial #:

Laboratory Name: Laboratory Location:

Recovery Comments:



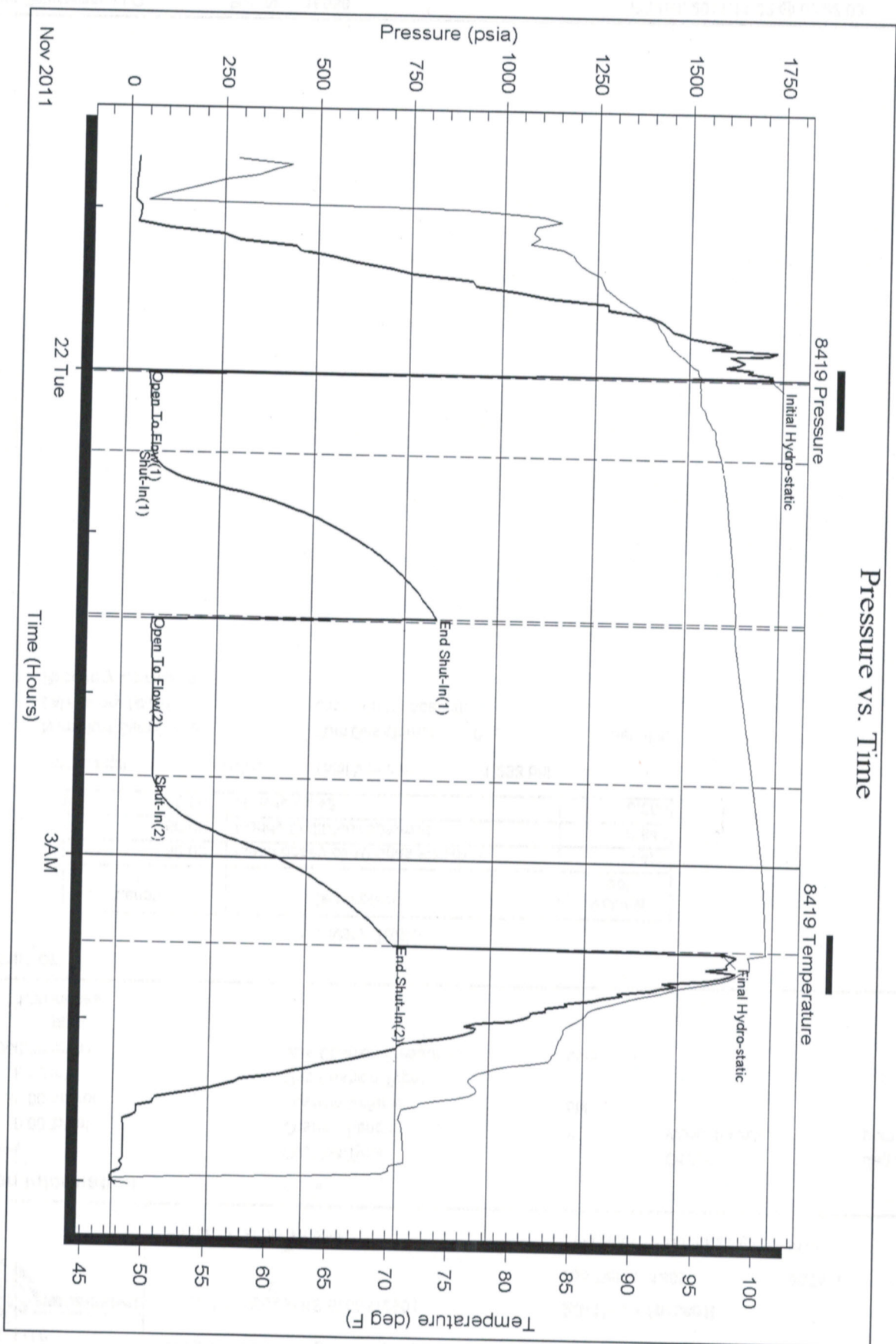
Serial #: 8419

Inside

Craig Ward dba Craig Oil Company

23-15-14 Russell

DST Test Number: 1



Superior Testers Enterprises LLC

Ref. No: 18658

Printed: 2011.11.22 @ 03:23:08

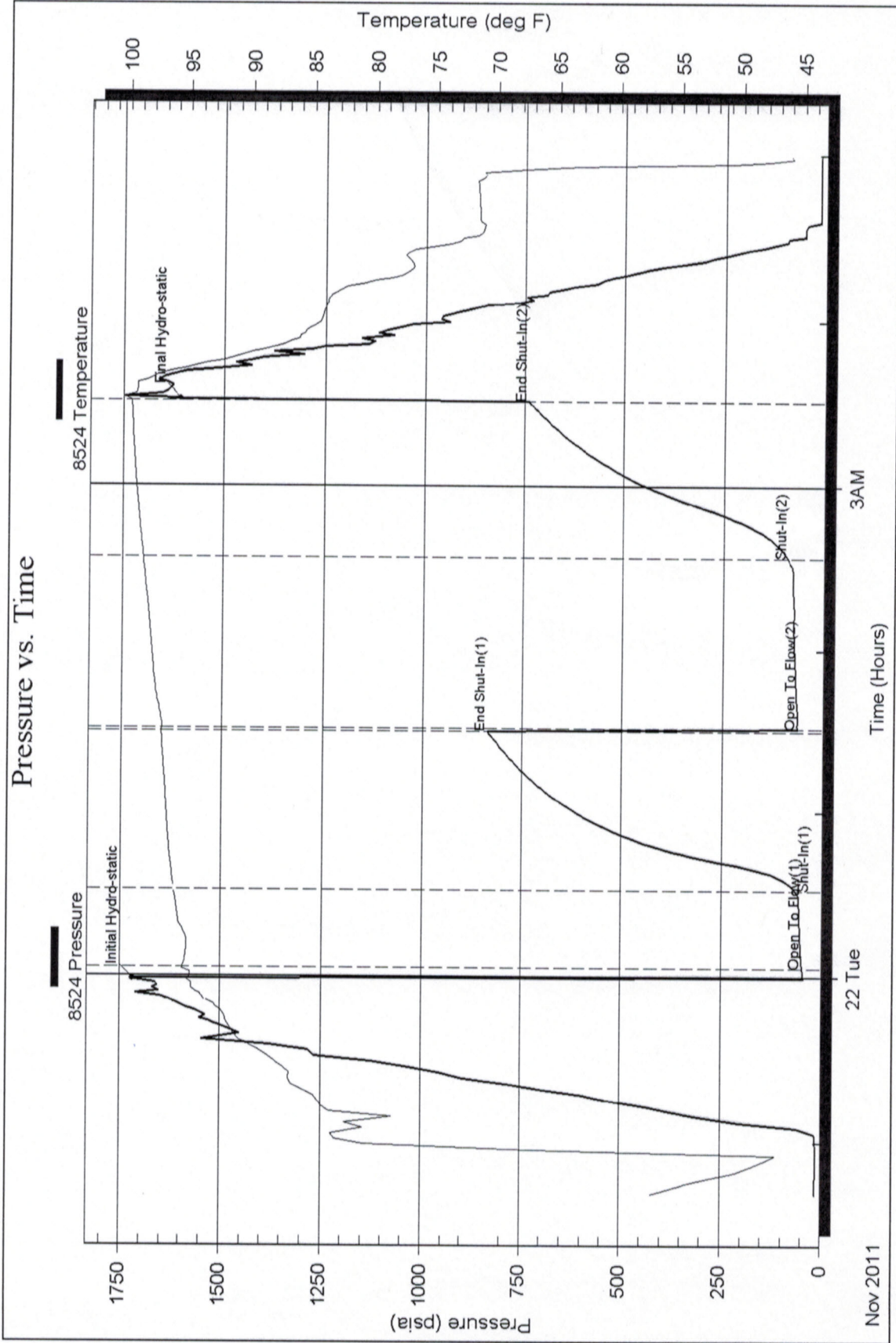
Serial #: 8524

Outside Craig Ward dba Craig Oil Company

23-15-14 Russell

DST Test Number: 1

Pressure vs. Time



Superior Testers Enterprises LLC

Ref. No: 18658

Printed: 2011.11.22 @ 03:23:08

