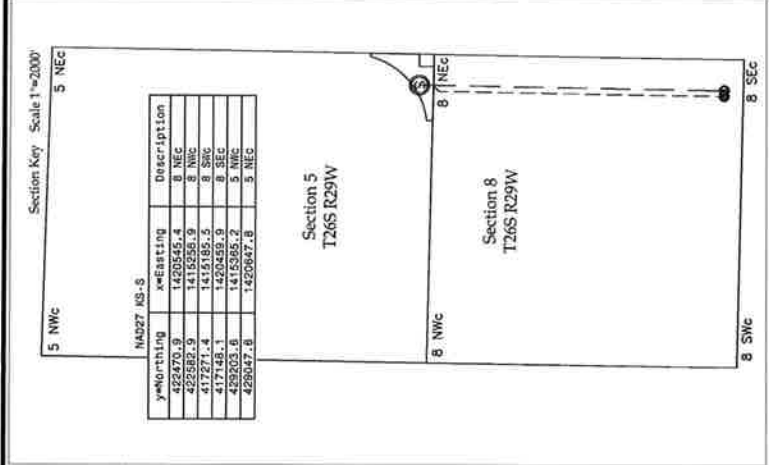
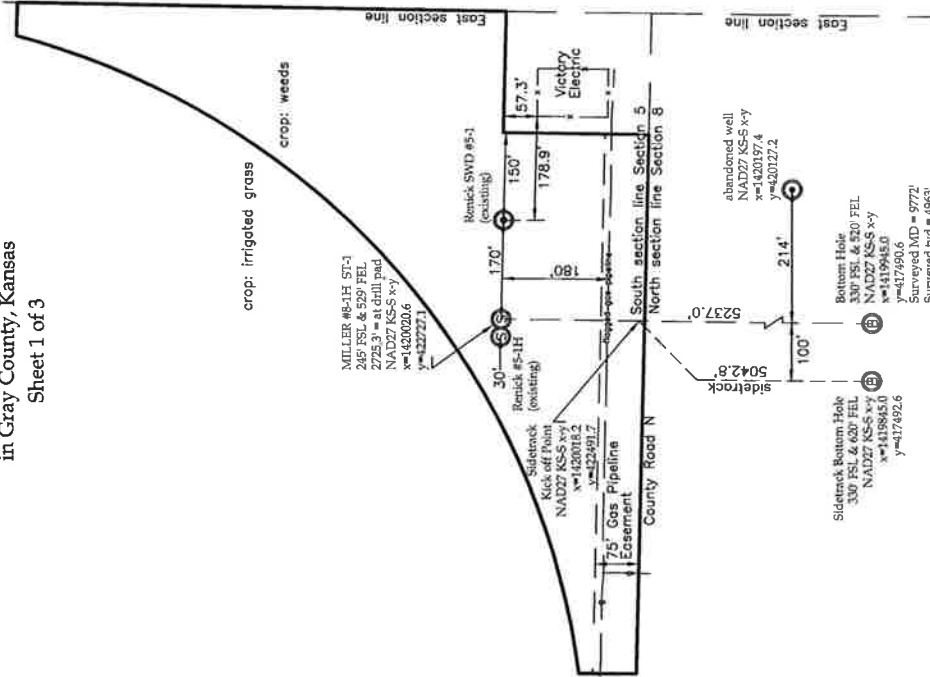


A Supplemental Sketch Miller #8-1H ST-1 Sidetrack

in Gray County, Kansas
Portions of Sections 5 & 8, T26S, R29W of the 6th P.M.,
in Gray County, Kansas
Sheet 1 of 3

Legend

- NE northeast
- SE southeast
- SW southwest
- vertical drill site
- ⊙ horizontal surface hole
- ⊚ horizontal bottom hole
- ⊛ saltwater disposal well
- SWD from south line
- FSL from east line
- FEL fence
- x- underground gas line
- g-



**A Supplemental Sketch
Miller #8-1H ST-1 Sidetrack
Sanchez Oil & Gas**

Sec. 5 & 8, T26S, R29W 6th P.M., Gray County, Kansas

Scale 1"=200' 082629wgrugs.dwg 082629w.crd

PRO-STAKE LLC
Construction Site Staking
PO Box 2324
Garden City, KS 67846
(620) 272-2499

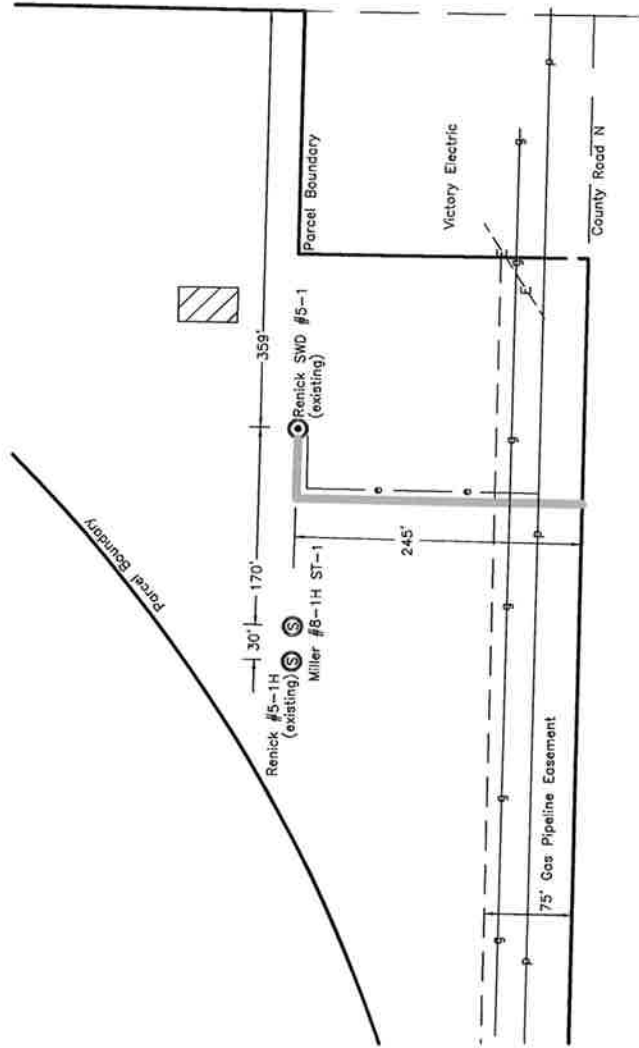
Date: 1/15/2013
Revisions: 1/15/2013

Notes:

- The purpose of this sketch is to show the relationship of the proposed Miller #8-1H ST-1 sidetrack to the lease lines in Sections 5 and 8 of T26S, R29W.
- Parcel boundary described in a separate map.
- BASIS OF COORDINATES: Coordinates and elevation are based on the NGS station Ingalls with a published position of 37 51 23.37640(N) 100 29 35.03091(W) and a published height of 2795 which is converted through the use of Corpscon version 6.0.1 (<http://www.tec.army.mil/>) to NAD27 KS-S x-y position of Easting/x = 1424743.0 Northing/y = 439371.9.

A Supplemental Sketch Miller 8-1H ST-1 Tank Battery

in Gray County, Kansas
 Portions of Sections 5 & 8, T26S, R29W of the 6th P.M.,
 in Gray County, Kansas
 Sheet 3 of 3



Legend

- SE
- vertical drill site
- horizontal surface hole
- saltwater disposal well
- underground gas pipeline
- overhead power line
- proposed electric line
- existing underground electric line
- proposed lease road
- proposed tank battery site

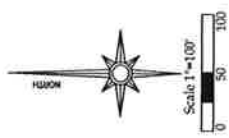
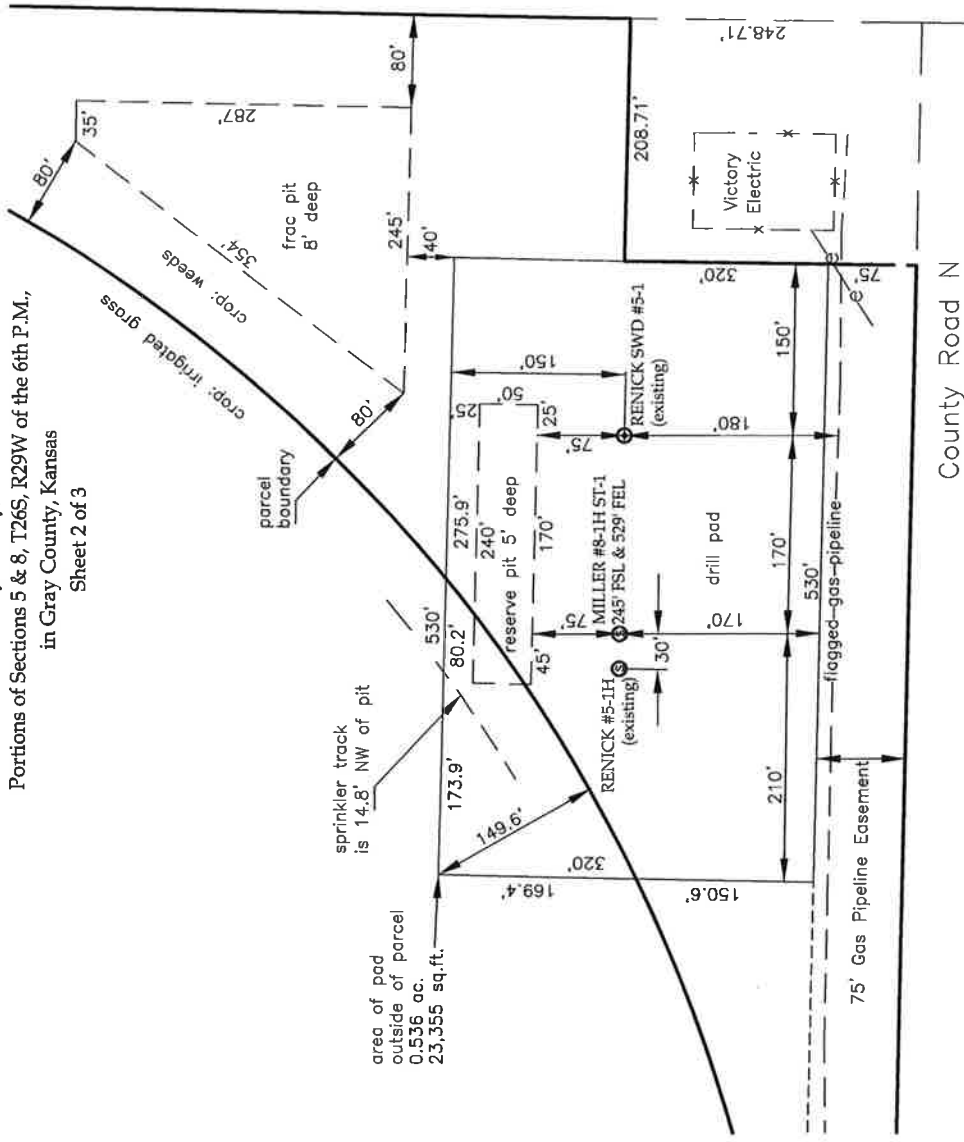


Notes:
 - The purpose of this sketch is to show the relationship of the top hole location for the Miller #8-1H ST-1 to the tank battery.
 - Parcel boundary described in a separate map.

A Supplemental Sketch Miller 8-1H ST-1 Tank Battery Sanchez Oil & Gas	
Sec. 5 & 8, T26S, R29W 6th P.M., Gray County, Kansas Scale 1"=100' 0826s29wgrugs.dwg 0826s29w.crd	Date: 5-20-2012 Revisions: (1) 1-15-2013
PRO-STAKE LLC Construction Site Staking PO Box 2324 Garden City, KS 67846 (620) 272-1499	

A Supplemental Sketch Miller 8-1H ST-1 Pad & Pits

in Gray County, Kansas
 Portions of Sections 5 & 8, T26S, R29W of the 6th P.M.,
 in Gray County, Kansas
 Sheet 2 of 3



Legend

- NW northwest
- sq.ft. square feet
- ⊙ vertical drill site
- ⊙ horizontal surface hole
- SWD saltwater disposal well
- X- fence
- FSL from south line
- FEL from east line
- ac. acres
- e- underground electric line

Notes:
 - The purpose of this sketch is to show the relationship of the top hole location for the Miller #8-1H ST-1 to the drill pad and pits.
 - Parcel boundary described in a separate map.

A Supplemental Sketch Miller 8-1H ST-1 Pad & Pits Sanchez Oil & Gas	
Sec. 5 & 8, T26S, R29W 6th P.M., Gray County, Kansas	
Scale 1"=100' 0826s29wgruugs.dwg 0826s29w.crd	
PRO-STAKE LLC Construction Site Staking PO Box 2324 Garden City, KS 67846 (620) 272-3499	
Date: 8-26-2012	
Revision:	
1) 11-5-2013	

Section 6

Section 5

Section 4

Section 7

Section 8

Section 9

T26S-R29W

Miller Unit
640 acres, m/l

Proposed
Gray County Unit 3

Renick Pooled Unit

Sanchez-Miller #1H
Surface Location

Sanchez-Miller #1H -ST
Bottom-Hole Location

Sanchez-Miller #1H
Bottom-Hole Location



SANCHEZ
OIL & GAS CORPORATION

Sanchez-Miller Unit #1H ST
(Sidetrack)
Miller Unit
640 acres, m/l
Sec 8, T26S-R29W
WKGC Prospect
Gray County, Kansas

**Miller Unit- Well No. 8-1H ST-1
WKGC Prospect
Gray County, Kansas**

Unit: 640 acres, more or less

Consists of all of Section 8, T26S-R29W

- Five lease tracts:**
- 1) 160 acres, m/l, being the NW/4 of Section 8, T26S-R29W**
 - 2) 7 acres, m/l, being 7 acres in the SW/4 of Section 8, T26S-R29W**
 - 3) 160 acres, m/l, being the SE/4 of Section 8, T26S-R29W**
 - 4) 160 acres, m/l, being the NE/4 of Section 8, T26S-R29W**
 - 5) 153 acres, m/l, being the SW/4 less a 7 acre tract of land of Section 8, T26S-R29W**

Surface Location: SE corner of Section 5, T26S- R29W, the surface parcel consisting of 9.819 acres owned by W.R. Renick, Inc. (exclusive of 1.19 acres owned by Victory Electric)

Surface Parcel Owner:

**W.R. Renick, Inc., a Kansas Corporation
6514 US Highway 50
Ingalls, Kansas 67853
Attn: Ila J. Reynolds
President**

Acquiring Surface Parcel:

**Sanchez Oil & Gas Corporation
1111 Bagby, Suite 1800
Houston, Texas 77002
Attn: Land Department**

Bottom Hole Location: SE corner of Section 8, T26S-R29W