

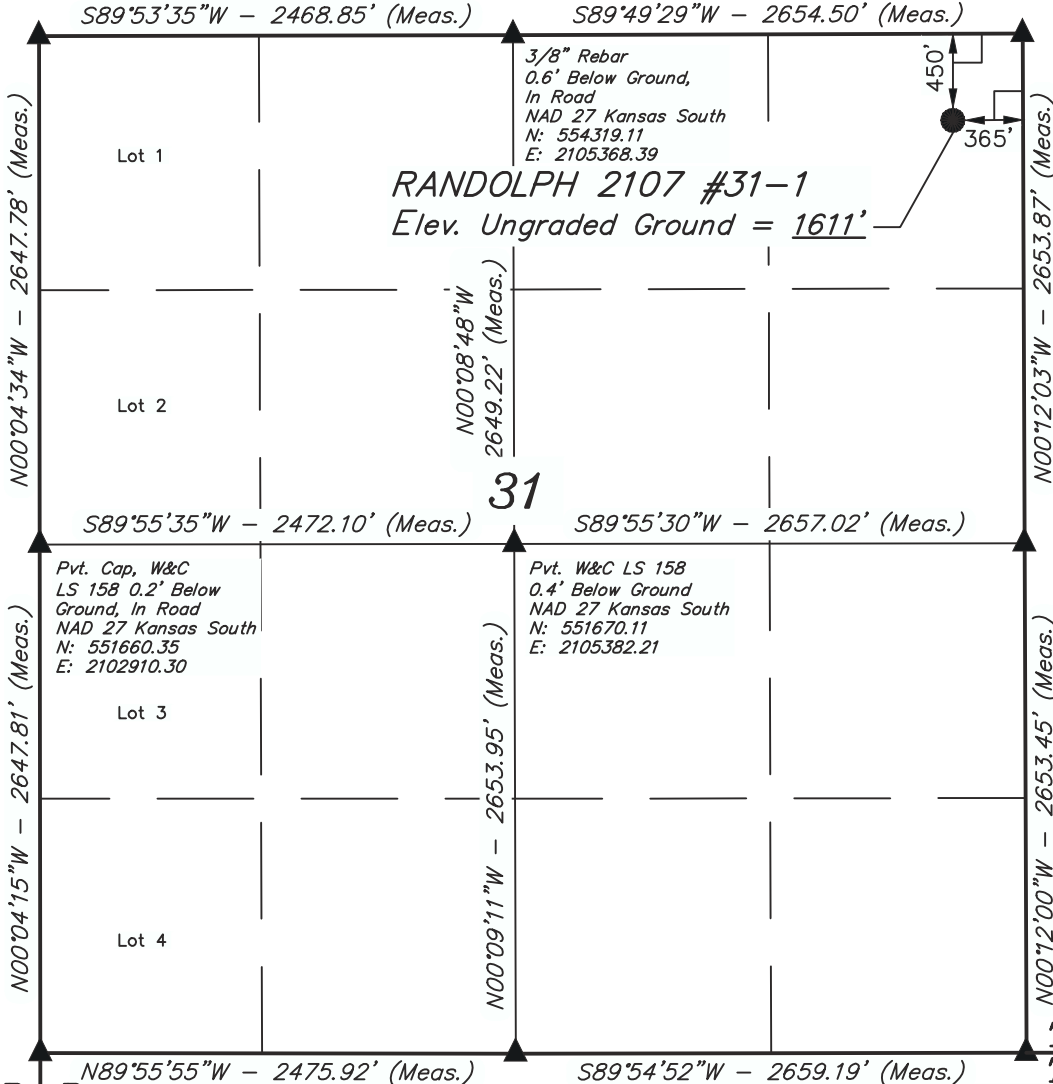
Limestone w/ 5/8" Rebar on East Side  
1.8' Below Ground,  
In Road Intersection  
NAD 27 Kansas South  
N: 554307.94  
E: 2102899.74

# T21S, R7W, 6th P.M.

3/8" Rebar  
0.4' Below Ground  
NAD 27 Kansas South  
N: 554334.29  
E: 2108022.66

## SGOMI

Well location, RANDOLPH 2107 #31-1, located as shown in the NE 1/4 NE 1/4 of Section 31, T21S, R7W, 6th P.M., Rice County, Kansas.



**RANDOLPH 2107 #31-1**  
Elev. Ungraded Ground = 1611'

### BASIS OF ELEVATION

SPOT ELEVATION LOCATED AT THE SOUTHWEST CORNER OF SECTION 18, T23S, R8W, 6th P.M. TAKEN FROM THE ALDEN SE, QUADRANGLE, KANSAS, RENO COUNTY, 7.5 MINUTE QUAD (TOPOGRAPHIC MAP) PUBLISHED BY THE UNITED STATES DEPARTMENT OF THE INTERIOR, GEOLOGICAL SURVEY, SAID ELEVATION IS MARKED AS BEING 1688 FEET.

### BASIS OF BEARINGS

BASIS OF BEARINGS IS A G.P.S. OBSERVATION.



SCALE

### CERTIFICATE

THIS IS TO CERTIFY THAT THE ABOVE PLAT WAS PREPARED FROM FIELD NOTES OF ACTUAL SURVEYS MADE BY ME OR UNDER MY SUPERVISION AND THAT THE SAME ARE TRUE AND CORRECT TO THE BEST OF MY KNOWLEDGE AND BELIEF.

*Robert S. 1146*  
 REGISTERED LAND SURVEYOR  
 REGISTRATION NO. 1146  
 STATE OF KANSAS

**R 8 W**  
 Limestone w/5/8" Rebar Bent Over Top  
1.7' Below Ground  
NAD 27 Kansas South  
N: 549012.74  
E: 2102920.62

Limestone w/Small Bar On West Side  
0.8' Below Ground  
NAD 27 Kansas South  
N: 549016.38  
E: 2105396.36

**T21S T22S**  
 5/8" Rebar  
0.4' Below Ground  
In Road  
NAD 27 Kansas South  
N: 549027.43  
E: 2108055.34

REV: 01-14-13 C.A.G.

**UINTAH ENGINEERING & LAND SURVEYING**  
 85 SOUTH 200 EAST - VERNAL, UTAH 84078  
 (435) 789-1017

### LEGEND:

- └─┘ = 90° SYMBOL
- = PROPOSED WELL HEAD.
- ▲ = SECTION CORNERS LOCATED.

<b>NAD 83 (#31-1 SURFACE LOCATION)</b>
LATITUDE = 38°11'14.09" (38.187247)
LONGITUDE = 98°07'32.74" (98.125761)
<b>NAD 27 (#31-1 SURFACE LOCATION)</b>
LATITUDE = 38°11'14.05" (38.187236)
LONGITUDE = 98°07'31.53" (98.125425)
<b>STATE PLANE NAD 27 (KANSAS SOUTH)</b>
N: 553882.29 E: 2107660.74

SCALE 1" = 1000'	DATE SURVEYED: 11-29-30	DATE DRAWN: 12-04-12
PARTY B.L. T.B. C.A.G.	REFERENCES G.L.O. PLAT	
WEATHER COOL	FILE SGOMI	