



GEOLOGISTS' REPORT

OPERATOR **MURFIN DRILLING COMPANY, INC.**

LEASE **PROCHAZKA UNIT # 1-22**

ELEVATIONS
K8 3340 Ft.

GL 3330 Ft.

ALL MEASUREMENTS FROM K 8

LOCATION **990 FNL & 2520 FEL**

SEC. **22** TWP **3S** RGE **36W**

COUNTY **RAWLINS** STATE **KANSAS**

FIELD **WILDCAT**

CONTRACTOR **Murfin Drilling Company** RIG NO. **14**

COMMENCED **26 Sept. 2012** COMPLETED **5 Oct. 2012**

MUD DRILLING ACED. **3331** MUD TYPE **Cheriflex**

DRLING TIME (NET) FROM **3590** TO **5042**

SAMPLES SAVED FROM **3590** TO **5042**

SAMPLES EXAMINED FROM **3590** TO **5042**

GEOLOGICAL SUPERVISION FROM **3592** TO **5042**
GEOLOGIST ON WELL **Paul Guzzelman**

ELECTRICAL SERVICES: Pioneer Energy Services

PLATEAU SERVICES: Comp. Neutron Density

Dual Induction

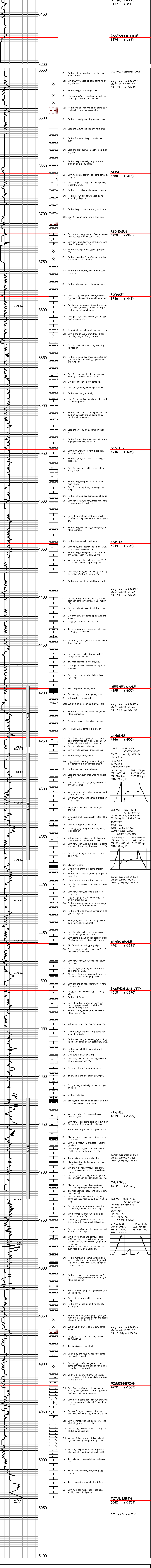
Comp. Sonic

Micro-resistivity

FORMATION

FORMATION	TOP DATUM	LOG	TOP DATUM	SAMPLE	LOG
Stone Corral	3134	+206	3137	+203	
Base/Anhydrite	3177	+163	3174	+168	
Foraker	3182	-442	3186	-446	
Topeka	4040	-700	4044	-704	
Oredel	4156	-816	4158	-818	
Lansing	4244	-904	4246	-906	
Base/Kansas City	4507	-1167	4510	-1170	
Cherokee	4707	-1387	4712	-1372	
Mississippian	4919	-1579	4922	-1582	
Total Depth	5040	-1700	5042	-1702	

DRILL TIME (MIN/FT)	DEPTH	SAMPLE DESCRIPTIONS	REMARKS
---------------------	-------	---------------------	---------



Operator: **MURFIN DRILLING COMPANY, INC.**

Lease: **PROCHAZKA # 1-22**

Location: **990 FNL & 2520 FEL** SEC. **22** TWP **3S** RGE **36W**

County: **RAWLINS** State: **KANSAS**

5:55 pm, 4 October 2012