



DRILL STEM TEST REPORT

Prepared For: **Murfin Drilling Co., Inc.**

250 N Water STE #300
Wichita, KS 67202

ATTN: Paul Gunzelman

Prochazka Unit #1-22

22-3s-36w Rawlins,KS

Start Date: 2012.10.01 @ 00:16:00

End Date: 2012.10.01 @ 07:44:45

Job Ticket #: 48077 DST #: 1

Trilobite Testing, Inc
PO Box 362 Hays, KS 67601
ph: 785-625-4778 fax: 785-625-5620

Printed: 2012.10.05 @ 14:42:42



TRILOBITE TESTING, INC.

DRILL STEM TEST REPORT

Murfin Drilling Co., Inc.

22-3s-36w Rawlins, KS

250 N Water STE #300
Wichita, KS 67202

Prochazka Unit #1-22

ATTN: Paul Gunzelman

Job Ticket: 48077

DST#: 1

Test Start: 2012.10.01 @ 00:16:00

GENERAL INFORMATION:

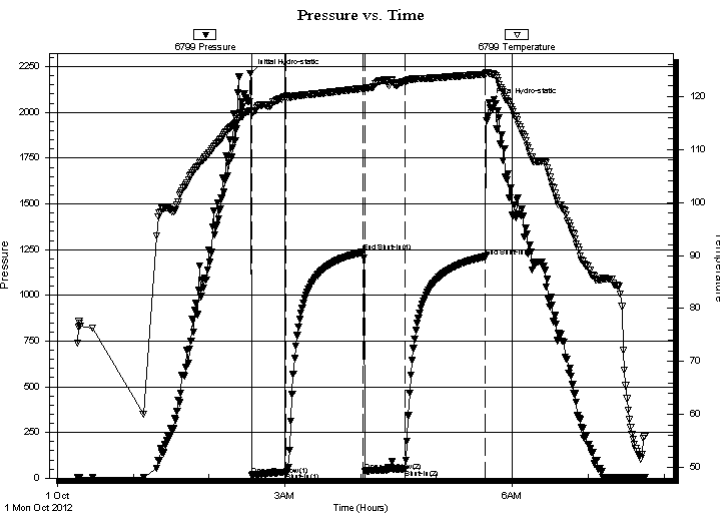
Formation: **LKC "A"**
 Deviated: No Whipstock: ft (KB)
 Time Tool Opened: 02:33:45
 Time Test Ended: 07:44:45
 Interval: **4192.00 ft (KB) To 4256.00 ft (KB) (TVD)**
 Total Depth: 4256.00 ft (KB) (TVD)
 Hole Diameter: 7.88 inches Hole Condition: Good
 Test Type: Conventional Bottom Hole (Initial)
 Tester: Kevin Mack
 Unit No: 43
 Reference Elevations: 3341.00 ft (KB)
 3331.00 ft (CF)
 KB to GR/CF: 10.00 ft

Serial #: 6799

Inside

Press @ Run Depth: 49.59 psig @ 4193.00 ft (KB) Capacity: 8000.00 psig
 Start Date: 2012.10.01 End Date: 2012.10.01 Last Calib.: 2012.10.01
 Start Time: 00:16:05 End Time: 07:44:44 Time On Btm: 2012.10.01 @ 02:32:45
 Time Off Btm: 2012.10.01 @ 05:41:45

TEST COMMENT: 30 - IF- 1/4" Blow built to 2"
 60 - IS- No Return
 30 - FF- No Blow
 60 - FS- No Return



PRESSURE SUMMARY

Time (Min.)	Pressure (psig)	Temp (deg F)	Annotation
0	2213.93	117.33	Initial Hydro-static
1	16.25	117.02	Open To Flow (1)
28	33.36	119.88	Shut-In(1)
89	1235.68	121.49	End Shut-In(1)
91	37.59	121.43	Open To Flow (2)
122	49.59	122.84	Shut-In(2)
186	1212.47	124.19	End Shut-In(2)
189	2055.07	124.28	Final Hydro-static

Recovery

Length (ft)	Description	Volume (bbl)
25.00	Mud 100M	0.12
5.00	MW 75M 25W	0.02

Gas Rates

	Choke (inches)	Pressure (psig)	Gas Rate (Mcf/d)



**TRILOBITE
TESTING, INC.**

DRILL STEM TEST REPORT

TOOL DIAGRAM

Murfin Drilling Co., Inc.

22-3s-36w Rawlins,KS

250 N Water STE #300
Wichita, KS 67202

Prochazka Unit #1-22

Job Ticket: 48077

DST#: 1

ATTN: Paul Gunzelman

Test Start: 2012.10.01 @ 00:16:00

Tool Information

Drill Pipe:	Length: 3641.00 ft	Diameter: 3.80 inches	Volume: 51.07 bbl	Tool Weight: 2500.00 lb
Heavy Wt. Pipe:	Length: 0.00 ft	Diameter: 0.00 inches	Volume: 0.00 bbl	Weight set on Packer: 25000.00 lb
Drill Collar:	Length: 532.00 ft	Diameter: 2.25 inches	Volume: 2.62 bbl	Weight to Pull Loose: 72000.00 lb
			<u>Total Volume: 53.69 bbl</u>	Tool Chased ft
Drill Pipe Above KB:	10.00 ft			String Weight: Initial 70000.00 lb
Depth to Top Packer:	4192.00 ft			Final 70000.00 lb
Depth to Bottom Packer:	ft			
Interval between Packers:	64.00 ft			
Tool Length:	93.00 ft			
Number of Packers:	2	Diameter: 6.75 inches		

Tool Comments:

Tool Description

Length (ft) Serial No. Position Depth (ft) Accum. Lengths

Tool Description	Length (ft)	Serial No.	Position	Depth (ft)	Accum. Lengths
Change Over Sub	1.00			4164.00	
Shut In Tool	5.00			4169.00	
Hydraulic tool	5.00			4174.00	
Jars	5.00			4179.00	
Safety Joint	3.00			4182.00	
Packer	5.00			4187.00	29.00 Bottom Of Top Packer
Packer	5.00			4192.00	
Stubb	1.00			4193.00	
Recorder	0.00	8648	Inside	4193.00	
Recorder	0.00	6799	Inside	4193.00	
Perforations	25.00			4218.00	
Change Over Sub	1.00			4219.00	
Drill Pipe	31.00			4250.00	
Change Over Sub	1.00			4251.00	
Bullnose	5.00			4256.00	64.00 Bottom Packers & Anchor

Total Tool Length: 93.00



**TRILOBITE
TESTING, INC.**

DRILL STEM TEST REPORT

FLUID SUMMARY

Murfin Drilling Co., Inc.

22-3s-36w Rawlins,KS

250 N Water STE #300
Wichita, KS 67202

Prochazka Unit #1-22

Job Ticket: 48077

DST#: 1

ATTN: Paul Gunzelman

Test Start: 2012.10.01 @ 00:16:00

Mud and Cushion Information

Mud Type: Gel Chem

Cushion Type:

Oil API:

deg API

Mud Weight: 9.00 lb/gal

Cushion Length:

ft

Water Salinity:

ppm

Viscosity: 49.00 sec/qt

Cushion Volume:

bbbl

Water Loss: 5.99 in³

Gas Cushion Type:

Resistivity: 0.00 ohm.m

Gas Cushion Pressure:

psig

Salinity: 900.00 ppm

Filter Cake: 2.00 inches

Recovery Information

Recovery Table

Length ft	Description	Volume bbbl
25.00	Mud 100M	0.123
5.00	MW 75M 25W	0.025

Total Length: 30.00 ft Total Volume: 0.148 bbl

Num Fluid Samples: 0

Num Gas Bombs: 0

Serial #:

Laboratory Name:

Laboratory Location:

Recovery Comments:

Serial #: 6799

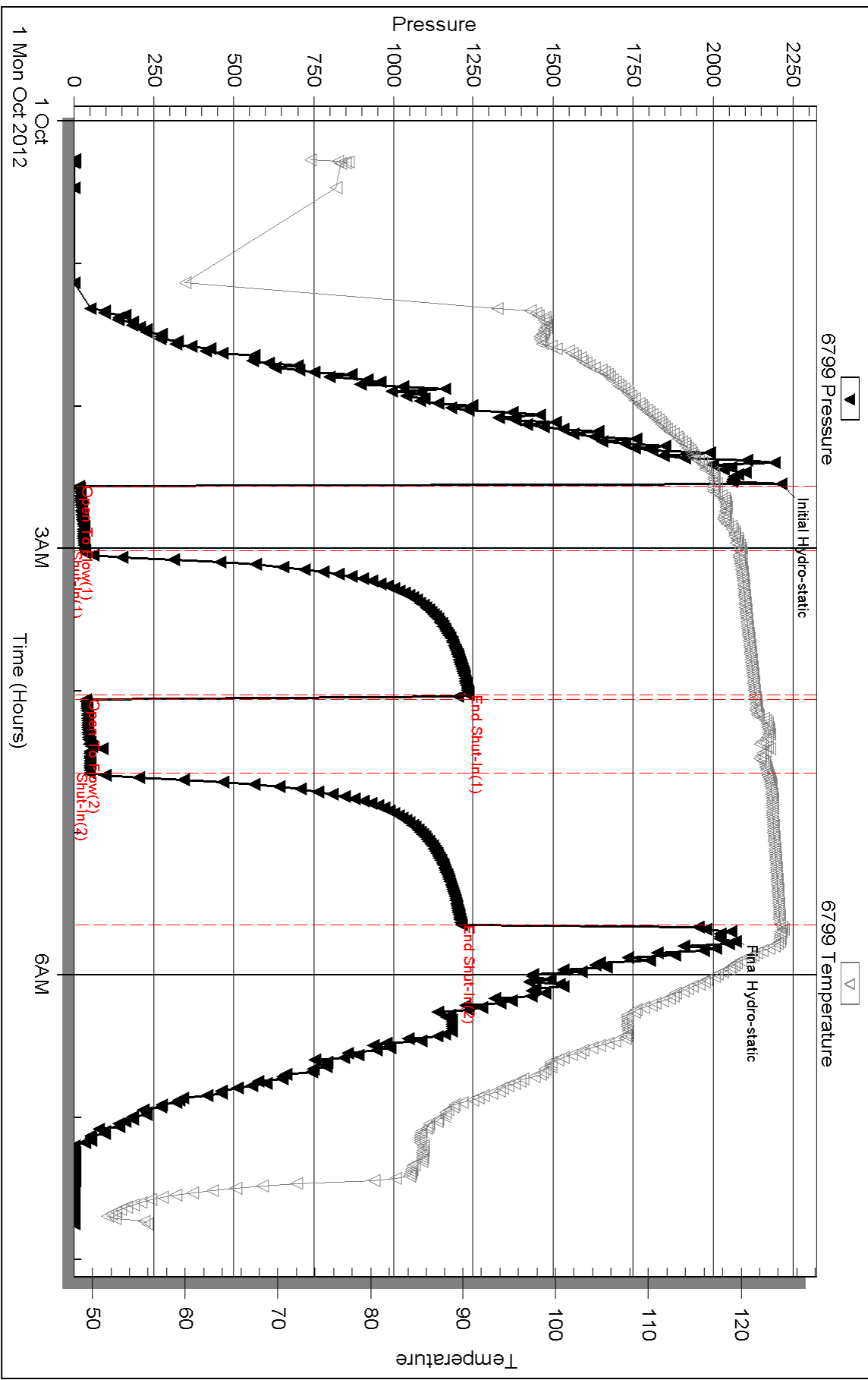
Inside

Murfin Drilling Co., Inc.

Pochazka Unit #1-22

DST Test Number: 1

Pressure vs. Time



Triobite Testing, Inc

Ref. No: 48077

Printed: 2012.10.05 @ 14:42:46

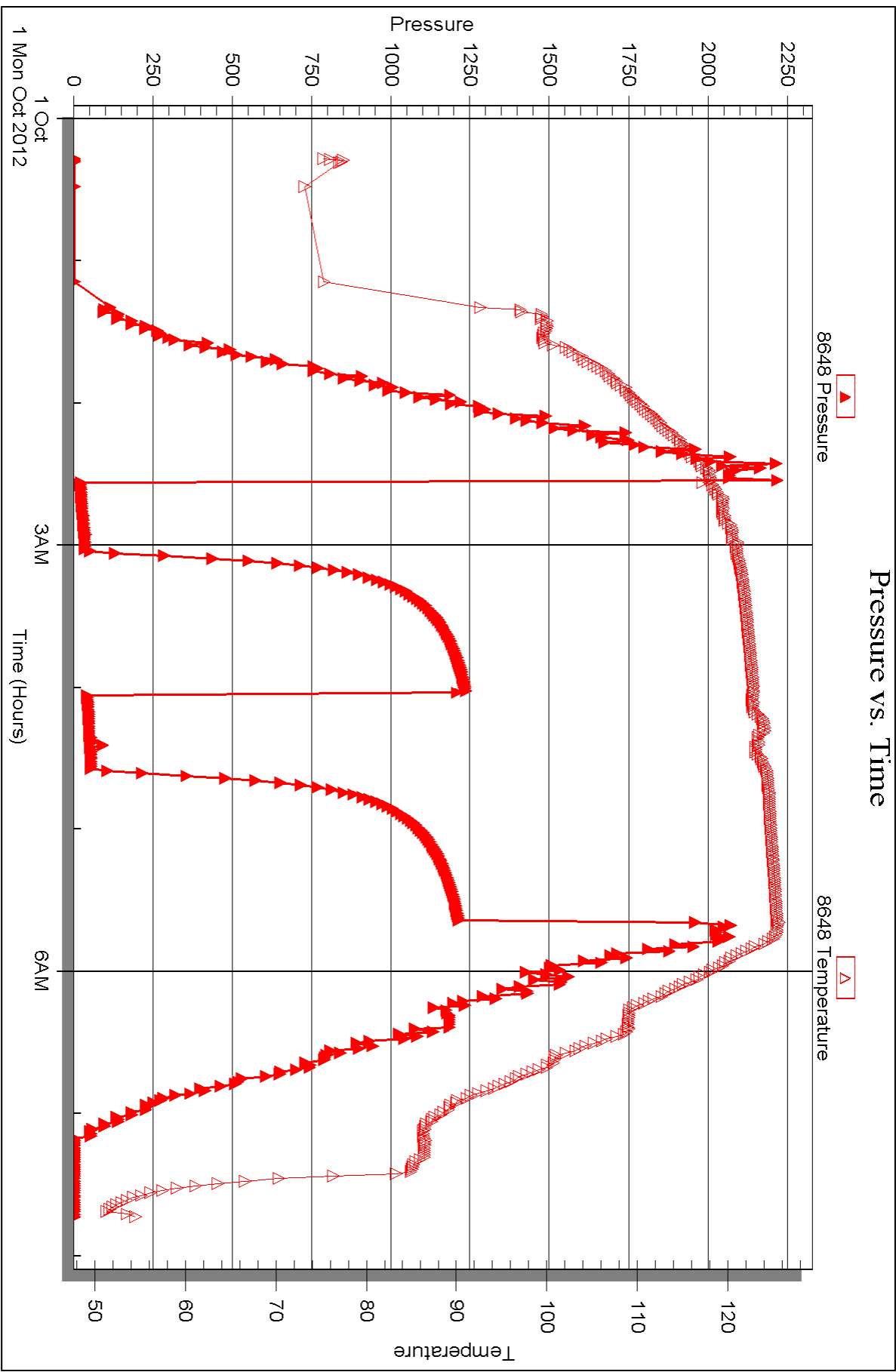
Serial #: 8648

Inside

Murfin Drilling Co., Inc.

Pochazka Unit #1-22

DST Test Number: 1





DRILL STEM TEST REPORT

Prepared For: **Murfin Drilling Co., Inc.**

250 N Water STE #300
Wichita, KS 67202

ATTN: Paul Gunzelman

Prochazka Unit #1-22

22-3s-36w Rawlins,KS

Start Date: 2012.10.01 @ 21:47:00

End Date: 2012.10.02 @ 07:01:15

Job Ticket #: 48078 DST #: 2

Trilobite Testing, Inc
PO Box 362 Hays, KS 67601
ph: 785-625-4778 fax: 785-625-5620

Printed: 2012.10.05 @ 14:41:52

Murfin Drilling Co., Inc.
22-3s-36w Rawlins,KS
Prochazka Unit #1-22
DST # 2
LKC "D-G"
2012.10.01



**TRILOBITE
TESTING, INC.**

DRILL STEM TEST REPORT

Murfin Drilling Co., Inc.

22-3s-36w Rawlins,KS

250 N Water STE #300
Wichita, KS 67202

Prochazka Unit #1-22

ATTN: Paul Gunzelman

Job Ticket: 48078

DST#: 2

Test Start: 2012.10.01 @ 21:47:00

GENERAL INFORMATION:

Formation: **LKC "D-G"**

Deviated: No Whipstock: ft (KB)

Time Tool Opened: 23:53:45

Time Test Ended: 07:01:15

Test Type: Conventional Bottom Hole (Initial)

Tester: Kevin Mack

Unit No: 43

Interval: 4362.00 ft (KB) To 4374.00 ft (KB) (TVD)

Reference Elevations: 3341.00 ft (KB)

Total Depth: 4374.00 ft (KB) (TVD)

3331.00 ft (CF)

Hole Diameter: 7.88 inches Hole Condition: Good

KB to GR/CF: 10.00 ft

Serial #: 8648

Inside

Press @ Run Depth: 1045.58 psig @ 4263.00 ft (KB)

Capacity: 8000.00 psig

Start Date: 2012.10.01

End Date:

2012.10.02

Last Calib.: 2012.10.02

Start Time: 21:47:05

End Time:

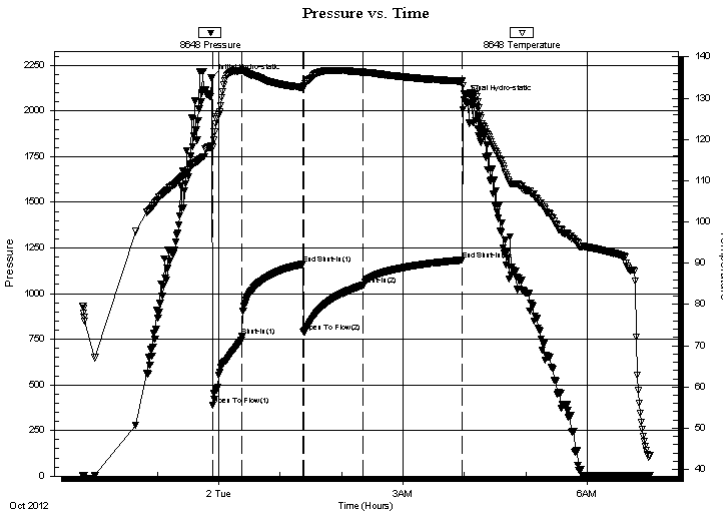
07:01:15

Time On Btm: 2012.10.01 @ 23:52:45

Time Off Btm: 2012.10.02 @ 03:59:45

TEST COMMENT: 30 - IF- BoB in 1 min
60 - IS- No Return
60 - FF- BoB in 5 min
90 - FS- No Return

PRESSURE SUMMARY



Time (Min.)	Pressure (psig)	Temp (deg F)	Annotation
0	2180.15	118.46	Initial Hydro-static
1	386.88	118.17	Open To Flow (1)
30	767.49	136.67	Shut-In(1)
89	1160.63	132.59	End Shut-In(1)
90	789.84	132.68	Open To Flow (2)
148	1045.58	136.31	Shut-In(2)
245	1183.48	134.14	End Shut-In(2)
247	2061.42	130.98	Final Hydro-static

Recovery

Length (ft)	Description	Volume (bbl)
5.00	Mud (Heavy) 100M	0.02
726.00	MW 5M 95W	5.38
564.00	MW 30M 70W	7.91
470.00	WM 70M 30W	6.59
475.00	Mud 100M	6.66

Gas Rates

	Choke (inches)	Pressure (psig)	Gas Rate (Mcf/d)



**TRILOBITE
TESTING, INC.**

DRILL STEM TEST REPORT

TOOL DIAGRAM

Murfin Drilling Co., Inc.

22-3s-36w Rawlins,KS

250 N Water STE #300
Wichita, KS 67202

Prochazka Unit #1-22

Job Ticket: 48078

DST#: 2

ATTN: Paul Gunzelman

Test Start: 2012.10.01 @ 21:47:00

Tool Information

Drill Pipe:	Length: 3706.00 ft	Diameter: 3.80 inches	Volume: 51.99 bbl	Tool Weight:	2500.00 lb
Heavy Wt. Pipe:	Length: 0.00 ft	Diameter: 0.00 inches	Volume: 0.00 bbl	Weight set on Packer:	25000.00 lb
Drill Collar:	Length: 532.00 ft	Diameter: 2.25 inches	Volume: 2.62 bbl	Weight to Pull Loose:	95000.00 lb
			<u>Total Volume: 54.61 bbl</u>	Tool Chased	ft
Drill Pipe Above KB:	5.00 ft			String Weight: Initial	78000.00 lb
Depth to Top Packer:	4262.00 ft			Final	86000.00 lb
Depth to Bottom Packer:	ft				
Interval between Packers:	112.00 ft				
Tool Length:	141.00 ft				
Number of Packers:	2	Diameter:	6.75 inches		
Tool Comments:					

Tool Description

Tool Description	Length (ft)	Serial No.	Position	Depth (ft)	Accum. Lengths
Change Over Sub	1.00			4234.00	
Shut In Tool	5.00			4239.00	
Hydraulic tool	5.00			4244.00	
Jars	5.00			4249.00	
Safety Joint	3.00			4252.00	
Packer	5.00			4257.00	29.00 Bottom Of Top Packer
Packer	5.00			4262.00	
Stubb	1.00			4263.00	
Recorder	0.00	8648	Inside	4263.00	
Recorder	0.00	6799	Inside	4263.00	
Perforations	10.00			4273.00	
Change Over Sub	1.00			4274.00	
Drill Pipe	94.00			4368.00	
Change Over Sub	1.00			4369.00	
Bullnose	5.00			4374.00	112.00 Bottom Packers & Anchor

Total Tool Length: 141.00



**TRILOBITE
TESTING, INC.**

DRILL STEM TEST REPORT

FLUID SUMMARY

Murfin Drilling Co., Inc.

22-3s-36w Rawlins,KS

250 N Water STE #300
Wichita, KS 67202

Prochazka Unit #1-22

Job Ticket: 48078

DST#: 2

ATTN: Paul Gunzelman

Test Start: 2012.10.01 @ 21:47:00

Mud and Cushion Information

Mud Type: Gel Chem

Cushion Type:

Oil API:

deg API

Mud Weight: 9.00 lb/gal

Cushion Length:

ft

Water Salinity:

ppm

Viscosity: 69.00 sec/qt

Cushion Volume:

bbbl

Water Loss: 6.39 in³

Gas Cushion Type:

Resistivity: 0.00 ohm.m

Gas Cushion Pressure:

psig

Salinity: 1100.00 ppm

Filter Cake: 2.00 inches

Recovery Information

Recovery Table

Length ft	Description	Volume bbl
5.00	Mud (Heavy) 100M	0.025
726.00	MW 5M 95W	5.383
564.00	MW 30M 70W	7.911
470.00	WM 70M 30W	6.593
475.00	Mud 100M	6.663

Total Length: 2240.00 ft

Total Volume: 26.575 bbl

Num Fluid Samples: 0

Num Gas Bombs: 0

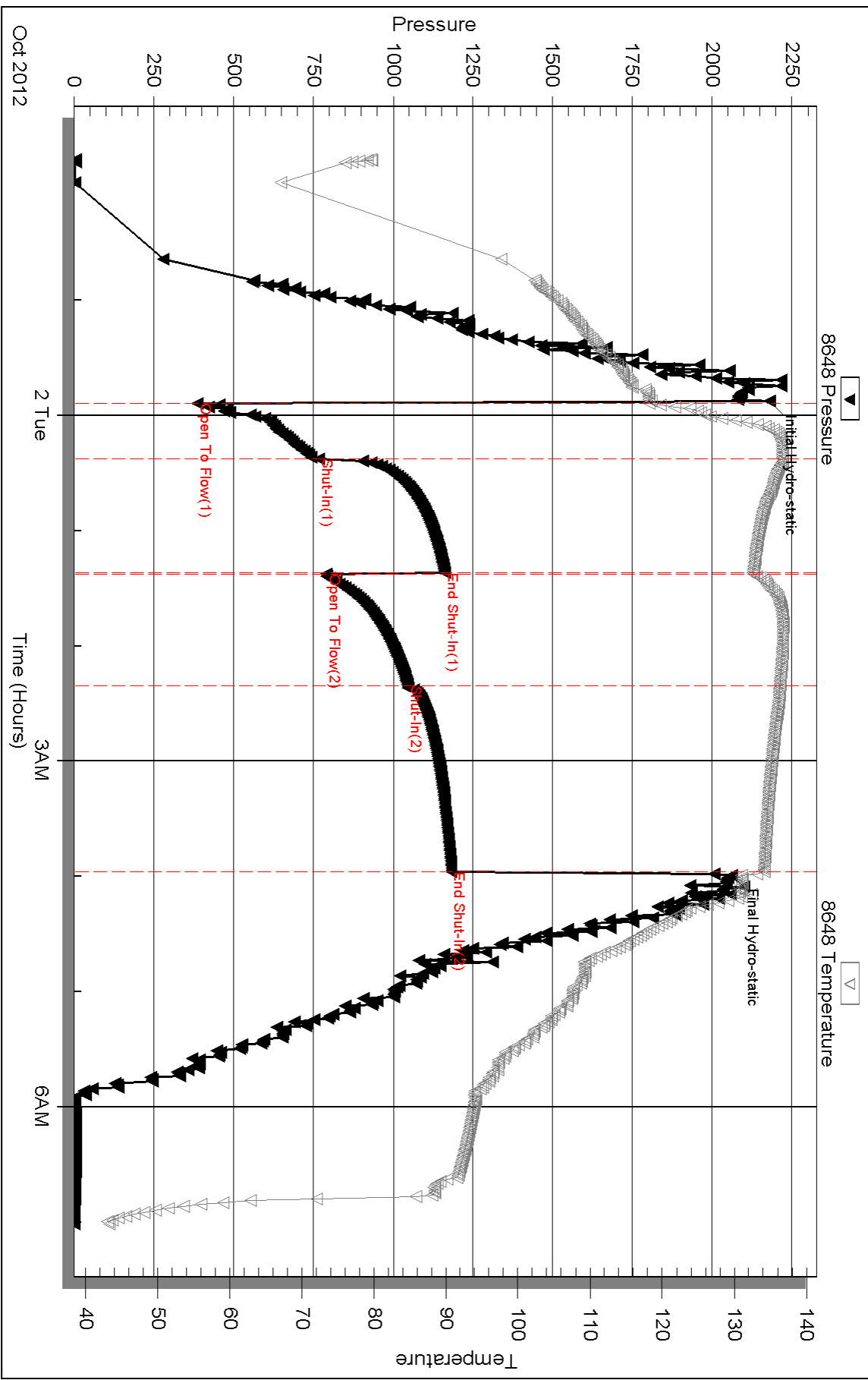
Serial #:

Laboratory Name:

Laboratory Location:

Recovery Comments:

Pressure vs. Time



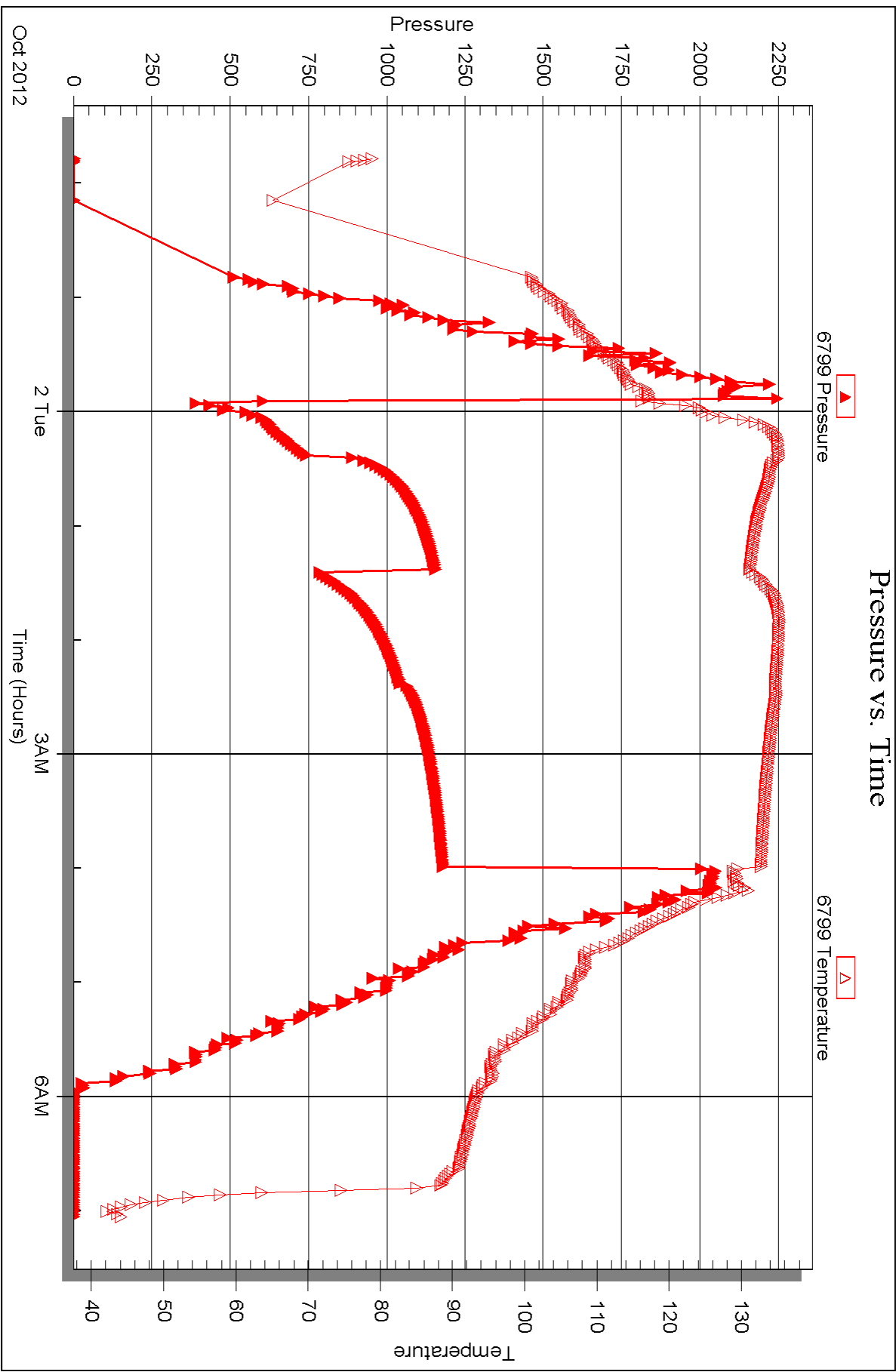
Serial #: 6799

Inside

Murfin Drilling Co., Inc.

Pochazka Unit #1-22

DST Test Number: 2





DRILL STEM TEST REPORT

Prepared For: **Murfin Drilling Co., Inc.**

250 N Water STE #300
Wichita, KS 67202

ATTN: Paul Gunzelman

Prochazka Unit #1-22

22-3s-36w Rawlins,KS

Start Date: 2012.10.03 @ 15:28:00

End Date: 2012.10.03 @ 22:31:30

Job Ticket #: 48079 DST #: 3

Trilobite Testing, Inc

PO Box 362 Hays, KS 67601

ph: 785-625-4778 fax: 785-625-5620

Printed: 2012.10.05 @ 14:40:47

Murfin Drilling Co., Inc.

22-3s-36w Rawlins,KS

Prochazka Unit #1-22

DST # 3

Pawnee - Cherokee

2012.10.03



**TRILOBITE
TESTING, INC.**

DRILL STEM TEST REPORT

Murfin Drilling Co., Inc.

22-3s-36w Rawlins, KS

250 N Water STE #300
Wichita, KS 67202

Prochazka Unit #1-22

Job Ticket: 48079

DST#: 3

ATTN: Paul Gunzelman

Test Start: 2012.10.03 @ 15:28:00

GENERAL INFORMATION:

Formation: **Pawnee - Cherokee**

Deviated: No Whipstock: ft (KB)

Time Tool Opened: 17:34:45

Time Test Ended: 22:31:30

Test Type: Conventional Bottom Hole (Initial)

Tester: Kevin Mack

Unit No: 43

Interval: **4622.00 ft (KB) To 4728.00 ft (KB) (TVD)**

Reference Elevations: 3341.00 ft (KB)

Total Depth: 4728.00 ft (KB) (TVD)

3331.00 ft (CF)

Hole Diameter: 7.88 inches Hole Condition: Good

KB to GR/CF: 10.00 ft

Serial #: 6799

Inside

Press @ Run Depth: 36.48 psig @ 4623.00 ft (KB)

Capacity: 8000.00 psig

Start Date: 2012.10.03

End Date:

2012.10.03

Last Calib.:

2012.10.03

Start Time: 15:28:05

End Time:

22:31:29

Time On Btm:

2012.10.03 @ 17:34:00

Time Off Btm:

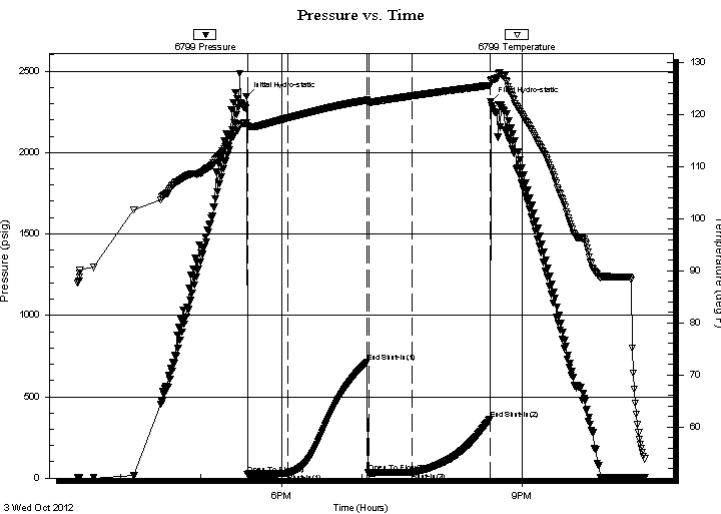
2012.10.03 @ 20:36:15

TEST COMMENT: 30 - IF- 1/4" Blow built to 3/4"

60 - IS- No Return

30 - FF- No Blow

60 - FS- No Return



PRESSURE SUMMARY

Time (Min.)	Pressure (psig)	Temp (deg F)	Annotation
0	2342.32	118.38	Initial Hydro-static
1	24.40	117.81	Open To Flow (1)
31	30.25	119.31	Shut-In(1)
90	714.26	122.72	End Shut-In(1)
92	32.84	122.37	Open To Flow (2)
124	36.48	123.54	Shut-In(2)
182	360.48	125.58	End Shut-In(2)
183	2315.03	126.50	Final Hydro-static

Recovery

Length (ft)	Description	Volume (bbl)
19.00	OCM 50 95m	0.09
1.00	Free Oil 100o	0.00

Gas Rates

Choke (inches)	Pressure (psig)	Gas Rate (Mcf/d)



**TRILOBITE
TESTING, INC.**

DRILL STEM TEST REPORT

TOOL DIAGRAM

Murfin Drilling Co., Inc.

22-3s-36w Rawlins,KS

250 N Water STE #300
Wichita, KS 67202

Prochazka Unit #1-22

Job Ticket: 48079

DST#: 3

ATTN: Paul Gunzelman

Test Start: 2012.10.03 @ 15:28:00

Tool Information

Drill Pipe:	Length: 4087.00 ft	Diameter: 3.80 inches	Volume: 57.33 bbl	Tool Weight:	2500.00 lb
Heavy Wt. Pipe:	Length: 0.00 ft	Diameter: 0.00 inches	Volume: 0.00 bbl	Weight set on Packer:	25000.00 lb
Drill Collar:	Length: 532.00 ft	Diameter: 2.25 inches	Volume: 2.62 bbl	Weight to Pull Loose:	90000.00 lb
			<u>Total Volume: 59.95 bbl</u>	Tool Chased	ft
Drill Pipe Above KB:	26.00 ft			String Weight: Initial	80000.00 lb
Depth to Top Packer:	4622.00 ft			Final	80000.00 lb
Depth to Bottom Packer:	ft				
Interval between Packers:	106.00 ft				
Tool Length:	135.00 ft				
Number of Packers:	2	Diameter:	6.75 inches		
Tool Comments:					

Tool Description

Length (ft) Serial No. Position Depth (ft) Accum. Lengths

Change Over Sub	1.00			4594.00	
Shut In Tool	5.00			4599.00	
Hydraulic tool	5.00			4604.00	
Jars	5.00			4609.00	
Safety Joint	3.00			4612.00	
Packer	5.00			4617.00	29.00 Bottom Of Top Packer
Packer	5.00			4622.00	
Stubb	1.00			4623.00	
Recorder	0.00	8648	Inside	4623.00	
Recorder	0.00	6799	Inside	4623.00	
Perforations	3.00			4626.00	
Change Over Sub	1.00			4627.00	
Drill Pipe	95.00			4722.00	
Change Over Sub	1.00			4723.00	
Bullnose	5.00			4728.00	106.00 Bottom Packers & Anchor

Total Tool Length: 135.00



**TRILOBITE
TESTING, INC.**

DRILL STEM TEST REPORT

FLUID SUMMARY

Murfin Drilling Co., Inc.

22-3s-36w Rawlins,KS

250 N Water STE #300
Wichita, KS 67202

Prochazka Unit #1-22

Job Ticket: 48079

DST#: 3

ATTN: Paul Gunzelman

Test Start: 2012.10.03 @ 15:28:00

Mud and Cushion Information

Mud Type: Gel Chem

Cushion Type:

Oil API:

deg API

Mud Weight: 9.00 lb/gal

Cushion Length:

ft

Water Salinity:

ppm

Viscosity: 62.00 sec/qt

Cushion Volume:

bbbl

Water Loss: 5.59 in³

Gas Cushion Type:

Resistivity: 0.00 ohm.m

Gas Cushion Pressure:

psig

Salinity: 1200.00 ppm

Filter Cake: 2.00 inches

Recovery Information

Recovery Table

Length ft	Description	Volume bbl
19.00	OCM 5O 95m	0.093
1.00	Free Oil 100o	0.005

Total Length: 20.00 ft Total Volume: 0.098 bbl

Num Fluid Samples: 0

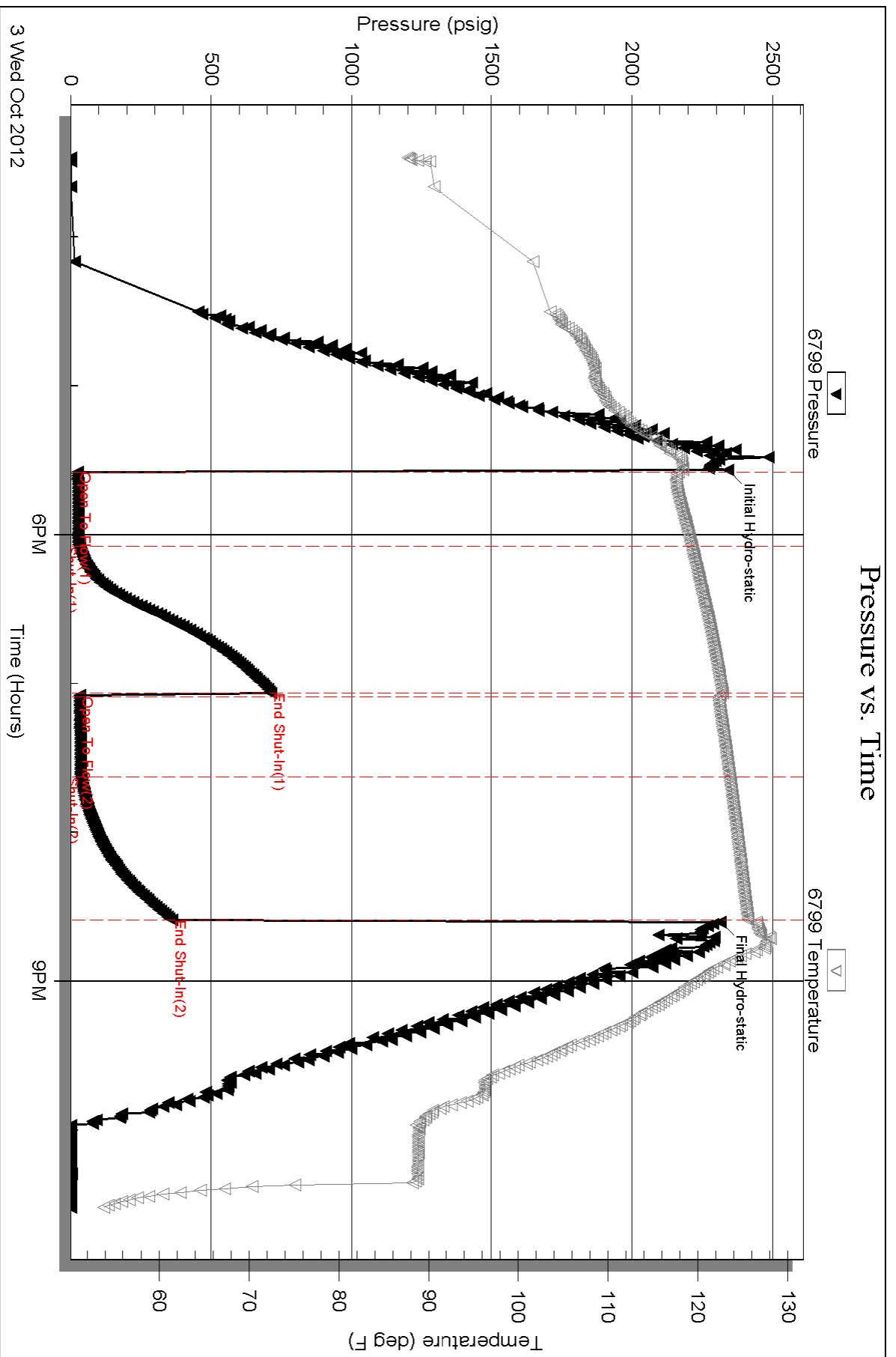
Num Gas Bombs: 0

Serial #:

Laboratory Name:

Laboratory Location:

Recovery Comments:



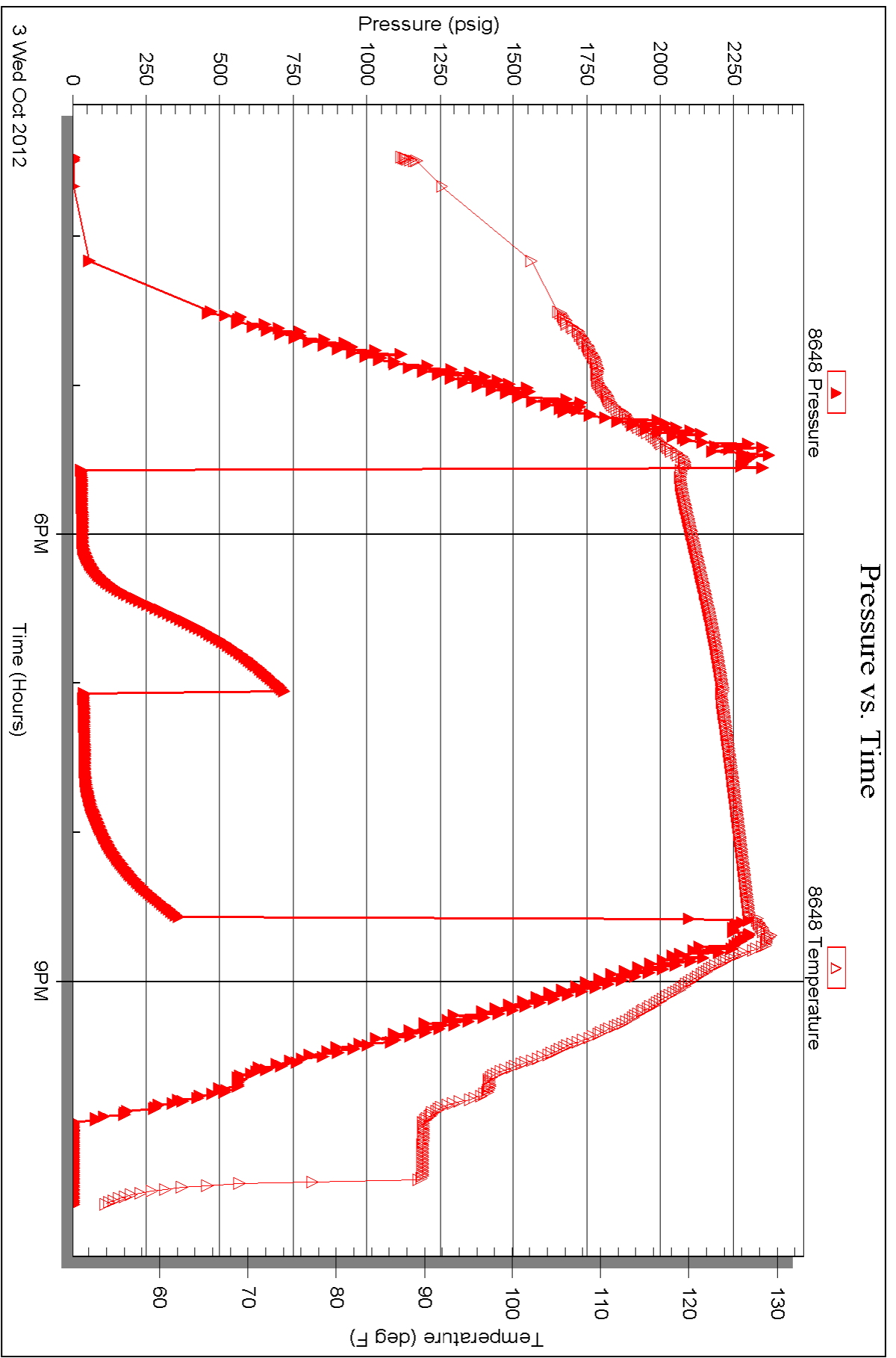
Serial #: 8648

Inside

Murfin Drilling Co., Inc.

Pochazka Unit #1-22

DST Test Number: 3



Triobite Testing, Inc

Ref. No: 48079

Printed: 2012.10.05 @ 14:40:52



TRILOBITE TESTING INC.

P.O. Box 1733 • Hays, Kansas 67601

Test Ticket

NO. 48077

Well Name & No. Prochazka #1-22 Test No. 1 Date 9-30-12
 Company Murphy Drilling Co. Inc. Elevation 3341 KB 3331 GL
 Address 250 N Water STE #3000 Wichita, KS 67202
 Co. Rep / Geo. Paul Gunzelman Rig Murphy #14
 Location: Sec. 22 Twp. 3s Rge. 36w Co. Rawlins State KS

Interval Tested 4192-4256 Zone Tested LKC "A"
 Anchor Length 64' Drill Pipe Run 3641 Mud Wt. 9.0
 Top Packer Depth 4188 Drill Collars Run 532' Vis 49
 Bottom Packer Depth 4192 Wt. Pipe Run Ø WL 6.0
 Total Depth ~~4256~~ 4256 Chlorides 900 ppm System LCM 6#
 Blow Description IF- 1/4" Blow built to 2"
IS- No Return
FF- No Blow
FS- No Return

Rec	Feet of	%gas	%oil	%water	%mud
<u>305</u>	<u>Muddy water</u>		<u>25</u>	<u>40.75</u>	
<u>25</u>	<u>Mud</u>			<u>100</u>	

Rec Total 30 BHT 124- Gravity - API RW - @ - °F Chlorides - ppm

(A) Initial Hydrostatic <u>2213</u>	<input checked="" type="checkbox"/> Test <u>1250</u>	T-On Location <u>11:05 PM</u>
(B) First Initial Flow <u>16</u>	<input checked="" type="checkbox"/> Jars <u>250</u>	T-Started <u>12:16 AM</u>
(C) First Final Flow <u>33</u>	<input checked="" type="checkbox"/> Safety Joint <u>75</u>	T-Open <u>2:33 AM</u>
(D) Initial Shut-In <u>1235</u>	<input checked="" type="checkbox"/> Circ Sub <u>N/C</u>	T-Pulled <u>5:33 AM</u>
(E) Second Initial Flow <u>37</u>	<input type="checkbox"/> Hourly Standby	T-Out <u>7:45 AM</u>
(F) Second Final Flow <u>49</u>	<input checked="" type="checkbox"/> Mileage <u>91 RT</u> 141.05	Comments
(G) Final Shut-In <u>1212</u>	<input type="checkbox"/> Sampler	
(H) Final Hydrostatic <u>2055</u>	<input type="checkbox"/> Straddle	<input type="checkbox"/> Ruined Shale Packer
Initial Open <u>30</u>	<input type="checkbox"/> Shale Packer	<input type="checkbox"/> Ruined Packer
Initial Shut-In <u>60</u>	<input type="checkbox"/> Extra Packer	<input type="checkbox"/> Extra Copies
Final Flow <u>30</u>	<input type="checkbox"/> Extra Recorder	Sub Total <u>0</u>
Final Shut-In <u>60</u>	<input type="checkbox"/> Day Standby	Total <u>1716.05</u>
	<input type="checkbox"/> Accessibility	MP/DST Disc't
	Sub Total <u>1716.05</u>	

Approved By _____ Our Representative

Triobite Testing Inc. shall not be liable for damaged of any kind of the property or personnel of the one for whom a test is made, or for any loss suffered or sustained, directly or indirectly, through the use of its equipment, or its statements or opinion concerning the results of any test, tools lost or damaged in the hole shall be paid for at cost by the party for whom the test is made.



TRILOBITE TESTING INC.

P.O. Box 1733 • Hays, Kansas 67601

Test Ticket

NO. 48078

Well Name & No. Prochazka #192 Test No. 2 Date 10-1-12
 Company Murphy Drilling Co. Inc. Elevation 3341 KB 3331 GL
 Address 2508 N Water STE #3008 Wichita, KS 67202
 Co. Rep / Geo. Paul Gunzelman Rig Murphy #14
 Location: Sec. 22 Twp. 3S Rge. 36W Co. Rawlins State KS

Interval Tested 4262-4374 Zone Tested LKC "D-G"
 Anchor Length 112 Drill Pipe Run 3706 Mud Wt. 9.0
 Top Packer Depth 4258 Drill Collars Run 532' Vis 69
 Bottom Packer Depth 4262 Wt. Pipe Run 0 WL 6.4
 Total Depth 4374 Chlorides 1,100 ppm System LCM 8#

Blow Description DF - BoB in 1 min.
IS - No Return
FF - BoB in 5 min
FS - No Return

Rec	Feet of	%gas	%oil	%water	%mud
<u>475</u>	<u>mud</u>			<u>100</u>	
<u>470</u>	<u>Wm</u>		<u>30</u>	<u>70</u>	
<u>564</u>	<u>MW</u>		<u>70</u>	<u>30</u>	
<u>726</u>	<u>MW</u>		<u>95</u>	<u>5</u>	
<u>5</u>	<u>Mud (Heavy)</u>			<u>100</u>	

Rec Total 2240' BHT 134 Gravity — API RW — @ — °F Chlorides — ppm

(A) Initial Hydrostatic 2188 Test 1250 T-On Location 9:10 PM
 (B) First Initial Flow 386 Jars 250 T-Started 9:47 PM
 (C) First Final Flow 767 Safety Joint 75 T-Open 11:54 PM
 (D) Initial Shut-In 1160 Circ Sub NIL T-Pulled 3:54 AM
 (E) Second Initial Flow 789 Hourly Standby _____ T-Out 7:03 AM
 (F) Second Final Flow 1045 Mileage 91RT 141.05
 (G) Final Shut-In 1183 Sampler _____
 (H) Final Hydrostatic 2061 Straddle _____
 Shale Packer _____
 Shale Packer _____
 Extra Packer _____
 Extra Recorder _____
 Day Standby _____
 Accessibility _____

Comments _____
 Ruined Shale Packer _____
 Ruined Packer _____
 Extra Copies _____
 Sub Total 0
 Total 1716.05
 MP/DST Disc't _____

Initial Open 30
 Initial Shut-In 60
 Final Flow 60
 Final Shut-In 90

Sub Total 1716.05

Approved By _____ Our Representative [Signature]

Trilobite Testing Inc. shall not be liable for damaged of any kind of the property or personnel of the one for whom a test is made, or for any loss suffered or sustained, directly or indirectly, through the use of its equipment, or its statements or opinion concerning the results of any test, tools lost or damaged in the hole shall be paid for at cost by the party for whom the test is made.



TRILOBITE TESTING INC.

P.O. Box 1733 • Hays, Kansas 67601

Test Ticket

NO. 48079

Well Name & No. Prochazka #1-22 Test No. 3 Date 10-3-12
 Company Murfin Drilling Company, Inc. Elevation 3341 KB 3331 GL
 Address 2508 N Water STE #300 Wichita, KS 67202
 Co. Rep / Geo. Paul Gunzelman Rig Murfin #14
 Location: Sec. 22 Twp. 3S Rge. 36W Co. Rawlins State KS

Interval Tested 4622-4728 Zone Tested Pawnee-Cherokee
 Anchor Length 106' Drill Pipe Run _____ Mud Wt. 9.1
 Top Packer Depth 4618 Drill Collars Run 532' Vis 62
 Bottom Packer Depth 4622 Wt. Pipe Run Ø WL 5.6
 Total Depth 4728 Chlorides 1,200 ppm System LCM 8#

Blow Description IF- 1/4" Blow built to 3/4"
IS- NO Return
FF- NO Blow
FS- NO Return

Rec	Feet of	%gas	%oil	%water	%mud
<u>1</u>	<u>Free oil</u>	<u>100</u>			
<u>19</u>	<u>OCM</u>	<u>5</u>		<u>95</u>	
Rec _____	Feet of _____	%gas _____	%oil _____	%water _____	%mud _____
Rec _____	Feet of _____	%gas _____	%oil _____	%water _____	%mud _____

Rec Total 20 BHT 126 Gravity - API RW - @ - °F Chlorides _____ ppm

(A) Initial Hydrostatic <u>2342</u>	<input checked="" type="checkbox"/> Test <u>1250</u>	T-On Location <u>2:20 PM</u>
(B) First Initial Flow <u>24</u>	<input checked="" type="checkbox"/> Jars <u>250</u>	T-Started <u>3:28 PM</u>
(C) First Final Flow <u>30</u>	<input checked="" type="checkbox"/> Safety Joint <u>75</u>	T-Open <u>5:35 PM</u>
(D) Initial Shut-In <u>714</u>	<input checked="" type="checkbox"/> Circ Sub <u>N/C</u>	T-Pulled <u>8:35 PM</u>
(E) Second Initial Flow <u>32</u>	<input type="checkbox"/> Hourly Standby _____	T-Out <u>10:32 PM</u>
(F) Second Final Flow <u>36</u>	<input checked="" type="checkbox"/> Mileage <u>91RT</u> 141.05	Comments _____
(G) Final Shut-In <u>360</u>	<input type="checkbox"/> Sampler _____	
(H) Final Hydrostatic <u>2315</u>	<input type="checkbox"/> Straddle _____	

Initial Open <u>30</u>	<input type="checkbox"/> Shale Packer _____	<input type="checkbox"/> Ruined Shale Packer _____
Initial Shut-In <u>60</u>	<input type="checkbox"/> Extra Packer _____	<input type="checkbox"/> Ruined Packer _____
Final Flow <u>30</u>	<input type="checkbox"/> Extra Recorder _____	Sub Total <u>0</u>
Final Shut-In <u>60</u>	<input type="checkbox"/> Day Standby _____	Total <u>1716.05</u>
	<input type="checkbox"/> Accessibility _____	MP/DST Disc't _____
	Sub Total <u>1716.05</u>	

Approved By _____ Our Representative

TriLOBite Testing Inc. shall not be liable for damaged of any kind of the property or personnel of the one for whom a test is made, or for any loss suffered or sustained, directly or indirectly, through the use of its equipment, or its statements or opinion concerning the results of any test, tools lost or damaged in the hole shall be paid for at cost by the party for whom the test is made.