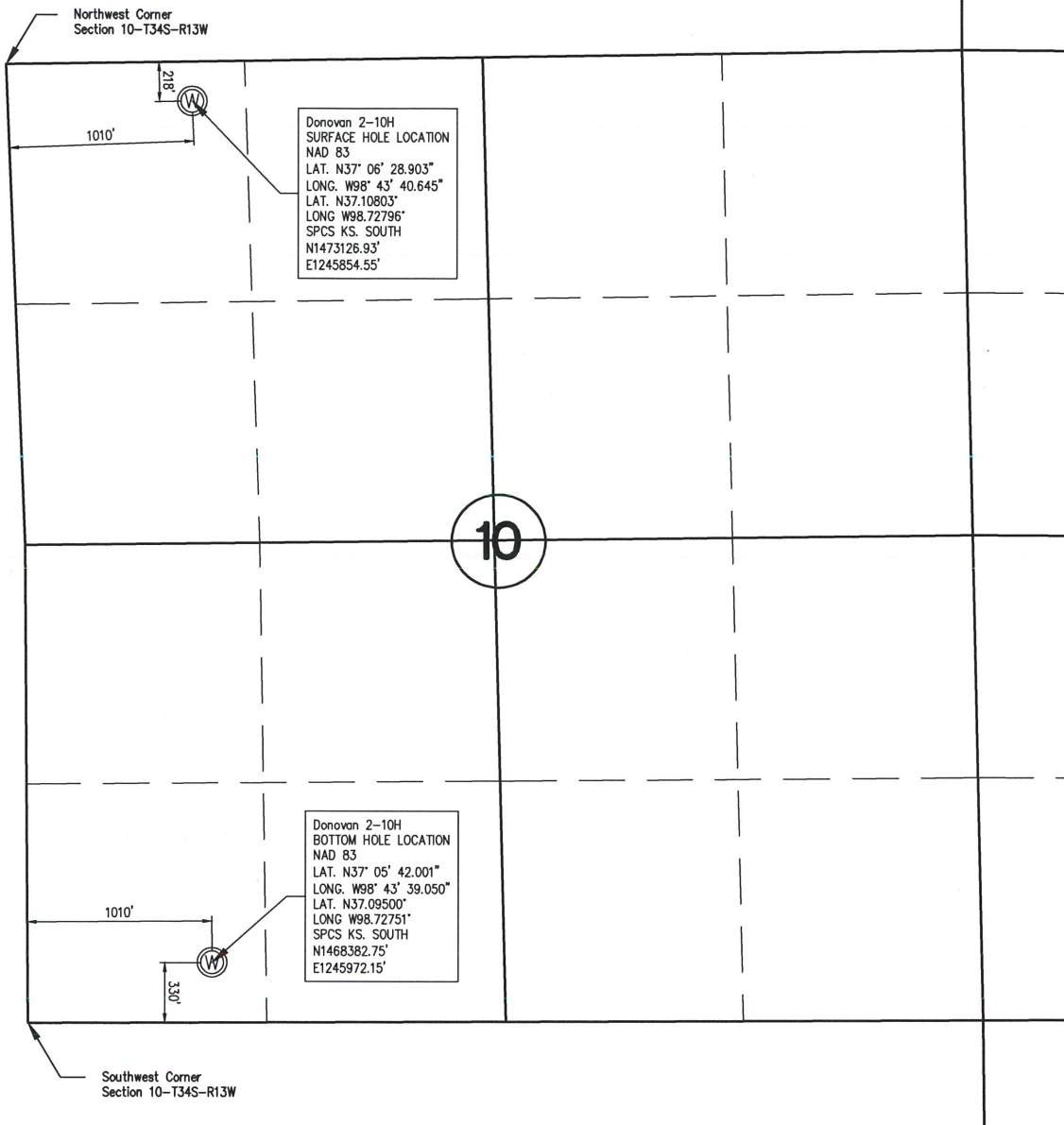


WELL STAKE-OUT SURVEY



Lease Name: Donovan
Well No.2-10H
Surface El. at SHL stake: 1830 NAVD88
Well location Co./State: Barber Co. Kansas
Well location Section: 10-T34S-R13W

Alternate Datums

Horz. Datum NAD27

Donovan #2-10H SHL Lat. N37.108003° Long. W98.727589°
Donovan #2-10H BHL Lat. N37.094975° Long. W98.727146°
Donovan #C-1 SHL Lat. N37.105208° Long. W98.728504°

SURVEY DATUMS (shown on drawing)

Horz. Datum NAD83(CORS96)
Vert. Datum NAVD88(GEIOD09)
Ks. SPCS South Zone (US Feet)

State of Kansas)
)SS
Sedgwick County)

This is to certify that this map or plat and the survey on which it is based was made by me or under my direct supervision and that to the best of knowledge and belief, this is a true and correct exhibit of said Survey. The wells shown hereon were staked January 3, 2013 at the coordinate location noted.

William P. Fox
William P. Fox LS 799
This survey is valid only if print
bears Surveyor's seal signed in blue ink.



POE & ASSOCIATES, INC.
CONSULTING ENGINEERS
5940 E. Central, Suite 200 ■ Wichita, KS 67208-4242
Phone 316/685-4114 ■ FAX 316/685-4444