

T25S, R9W, 6th P.M.

SGOMI

Well location, PREISSER 2509 #8-1H, located as shown in the SW 1/4 SW 1/4 of Section 8, T25S, R9W, 6th P.M., Reno County, Kansas.

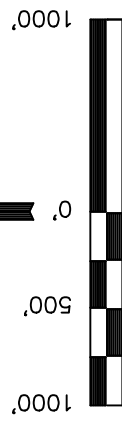
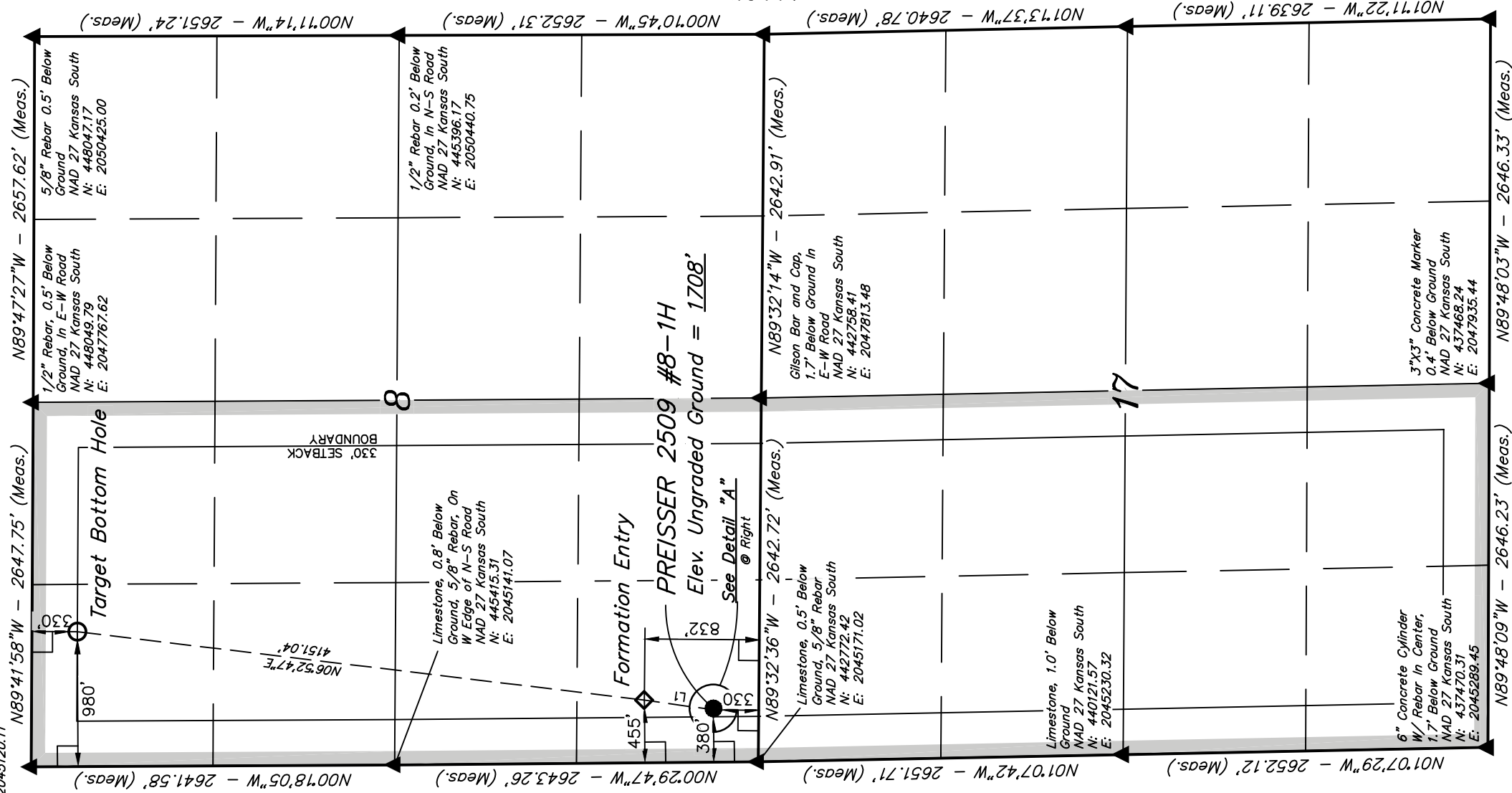
BASIS OF ELEVATION

SPOT ELEVATION LOCATED AT THE SOUTHWEST CORNER OF SECTION 18, T23S, R8W, 6th P.M. TAKEN FROM THE ALDEN SE, QUADRANGLE, KANSAS, RENO COUNTY, 7.5 MINUTE QUAD (TOPOGRAPHIC MAP) PUBLISHED BY THE UNITED STATES DEPARTMENT OF THE INTERIOR, GEOLOGICAL SURVEY, SAID ELEVATION IS MARKED AS BEING 1688 FEET.

BASIS OF BEARINGS

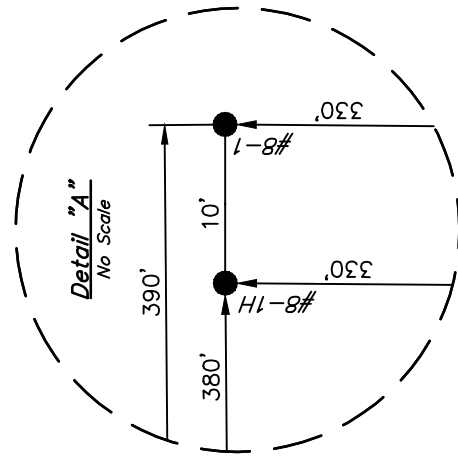
BASIS OF BEARINGS IS A G.P.S. OBSERVATION.

1/2" Rebar, 0.7' Below Ground, In N-S Road
NAD 27 Kansas South
N: 446056.61
E: 2045120.11



S C A L E

| LINE TABLE | |
|------------|---------------------|
| LINE | DIRECTION LENGTH |
| L1 | N08°00'20"E 506.31' |



1/2" Rebar, 0.7' Below Ground, In N-S Road
NAD 27 Kansas South
N: 442744.11
E: 2050456.12

1/2" Rebar, 0.3' Below Ground, In N-S Road
NAD 27 Kansas South
N: 440104.29
E: 20500519.71

1/2" Rebar, 0.1' Below Ground, In N-S Road
NAD 27 Kansas South
N: 437466.09
E: 20500581.54

LEGEND:

- = 90° SYMBOL
- = PROPOSED WELL HEAD.
- ▲ = SECTION CORNERS LOCATED.

| | | |
|---|--|---|
| NAD 83 (#8-1H, TARGET BOTTOM HOLE) LATITUDE = 37°53'46.32" (37.896200) LONGITUDE = 98°20'26.08" (98.340578) | NAD 83 (#8-1H, FORMATION ENTRY) LATITUDE = 37°53'05.57" (37.884881) LONGITUDE = 98°20'32.24" (98.342289) | NAD 83 (#8-1H, SURFACE LOCATION) LATITUDE = 37°53'00.61" (37.883503) LONGITUDE = 98°20'33.11" (98.342531) |
| NAD 27 (#8-1H, TARGET BOTTOM HOLE) LATITUDE = 37°53'48.26" (37.896183) LONGITUDE = 98°20'24.83" (98.340231) | NAD 27 (#8-1H, FORMATION ENTRY) LATITUDE = 37°53'05.52" (37.884867) LONGITUDE = 98°20'30.98" (98.341939) | NAD 27 (#8-1H, SURFACE LOCATION) LATITUDE = 37°53'00.56" (37.883489) LONGITUDE = 98°20'31.86" (98.342185) |
| STATE PLANE NAD 27 (KANSAS SOUTH) N: 447724.10 E: 2045102.69 | STATE PLANE NAD 27 (KANSAS SOUTH) N: 443801.94 E: 2045616.51 | STATE PLANE NAD 27 (KANSAS SOUTH) N: 443100.42 E: 2045547.34 |

REVISED: 01-21-13

UNTAH ENGINEERING & LAND SURVEYING
85 SOUTH 200 EAST - VERNAL, UTAH 84078
(435) 789-1017

| | | |
|-------------------------|----------------------------|-------------------------|
| SCALE 1" = 1000' | DATE SURVEYED: 08-24-12 | DATE DRAWN: 08-28-12 |
| PARTY J.P. C.B. C.C. | REFERENCES G.L.O. PLAT | |
| WEATHER HOT | FILE SGOMI | |

