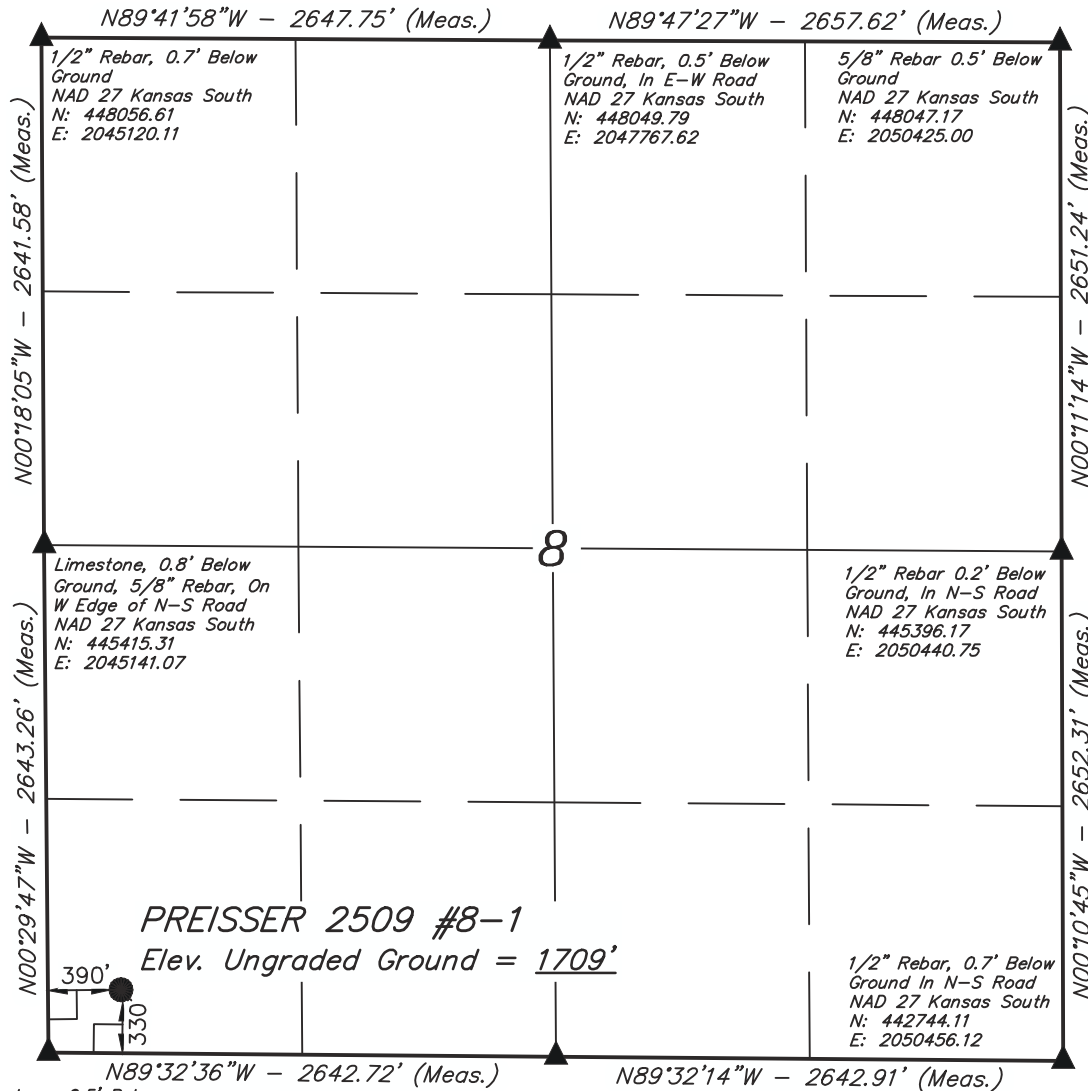


T25S, R9W, 6th P.M.

SGOMI

Well location, PREISSER 2509 #8-1, located as shown in the SW 1/4 SW 1/4 of Section 8, T25S, R9W, 6th P.M., Reno County, Kansas.

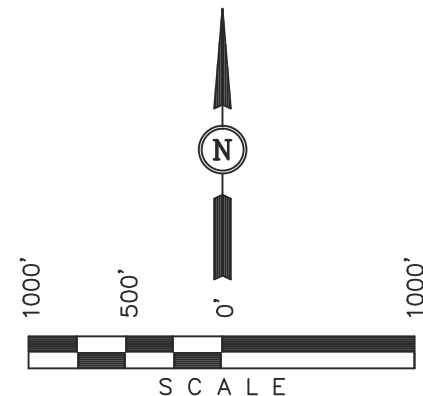


BASIS OF ELEVATION

SPOT ELEVATION LOCATED AT THE SOUTHWEST CORNER OF SECTION 18, T23S, R8W, 6th P.M. TAKEN FROM THE ALDEN SE, QUADRANGLE, KANSAS, RENO COUNTY, 7.5 MINUTE QUAD (TOPOGRAPHIC MAP) PUBLISHED BY THE UNITED STATES DEPARTMENT OF THE INTERIOR, GEOLOGICAL SURVEY, SAID ELEVATION IS MARKED AS BEING 1688 FEET.

BASIS OF BEARINGS

BASIS OF BEARINGS IS A G.P.S. OBSERVATION.



CERTIFICATE

THIS IS TO CERTIFY THAT THE ABOVE PLAT WAS PREPARED FROM FIELD NOTES OF ACTUAL SURVEYS MADE BY ME OR UNDER MY SUPERVISION AND THAT THE SAME ARE TRUE AND CORRECT TO THE BEST OF MY KNOWLEDGE AND BELIEF.

Robert S. 11451
 REGISTERED LAND SURVEYOR
 REGISTRATION NO. 11451
 STATE OF KANSAS

REVISED: 01-21-13

UINTAH ENGINEERING & LAND SURVEYING
 85 SOUTH 200 EAST - VERNAL, UTAH 84078
 (435) 789-1017

Limestone, 0.5' Below Ground, 5/8" Rebar, NAD 27 Kansas South, N: 442772.42, E: 2045171.02
 Gilson Bar and Cap, 1.7' Below Ground In E-W Road, NAD 27 Kansas South, N: 442758.41, E: 2047813.48

LEGEND:

- └─┘ = 90° SYMBOL
- = PROPOSED WELL HEAD.
- ▲ = SECTION CORNERS LOCATED.

NAD 83 (#8-1 SURFACE LOCATION)
LATITUDE = 37°53'00.61" (37.883503)
LONGITUDE = 98°20'32.99" (98.342497)
NAD 27 (#8-1 SURFACE LOCATION)
LATITUDE = 37°53'00.56" (37.883489)
LONGITUDE = 98°20'31.73" (98.342147)
STATE PLANE NAD 27 (KANSAS SOUTH)
N: 443100.46 E: 2045557.37

SCALE 1" = 1000'	DATE SURVEYED: 08-24-12	DATE DRAWN: 08-28-12
PARTY J.P. C.B. C.C.	REFERENCES G.L.O. PLAT	
WEATHER HOT	FILE SGOMI	