

T33S, R7W, 6th P.M.

SGOMI

UELS Alum. Cap.
8" Below Ground
NAD 27 Kansas South
N: 192793.14
E: 2123701.91

1/2" Rebar 0.4' Below Ground
NAD 27 Kansas South
N: 192856.18
E: 2129054.39

Well location, HUDGENS 3307 #10-1H, located as shown in the SE 1/4 SE 1/4 of Section 10, T33S, R7W, 6th P.M., Harper County, Kansas.

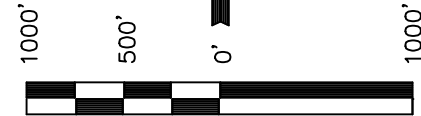
BASIS OF ELEVATION

SPOT ELEVATION LOCATED AT THE NORTHEAST CORNER OF SECTION 22, T33S, R7W, 6th P.M. TAKEN FROM THE ANTHONY, QUADRANGLE, KANSAS, HARPER COUNTY, 7.5 MINUTE QUAD (TOPOGRAPHIC MAP) PUBLISHED BY THE UNITED STATES DEPARTMENT OF THE INTERIOR, GEOLOGICAL SURVEY. SAID ELEVATION IS MARKED AS BEING 1348 FEET.

BASIS OF BEARINGS

BASIS OF BEARINGS IS A G.P.S. OBSERVATION.

LINE TABLE		
LINE	DIRECTION	LENGTH
L1	N31°49'20"E	1183.30'



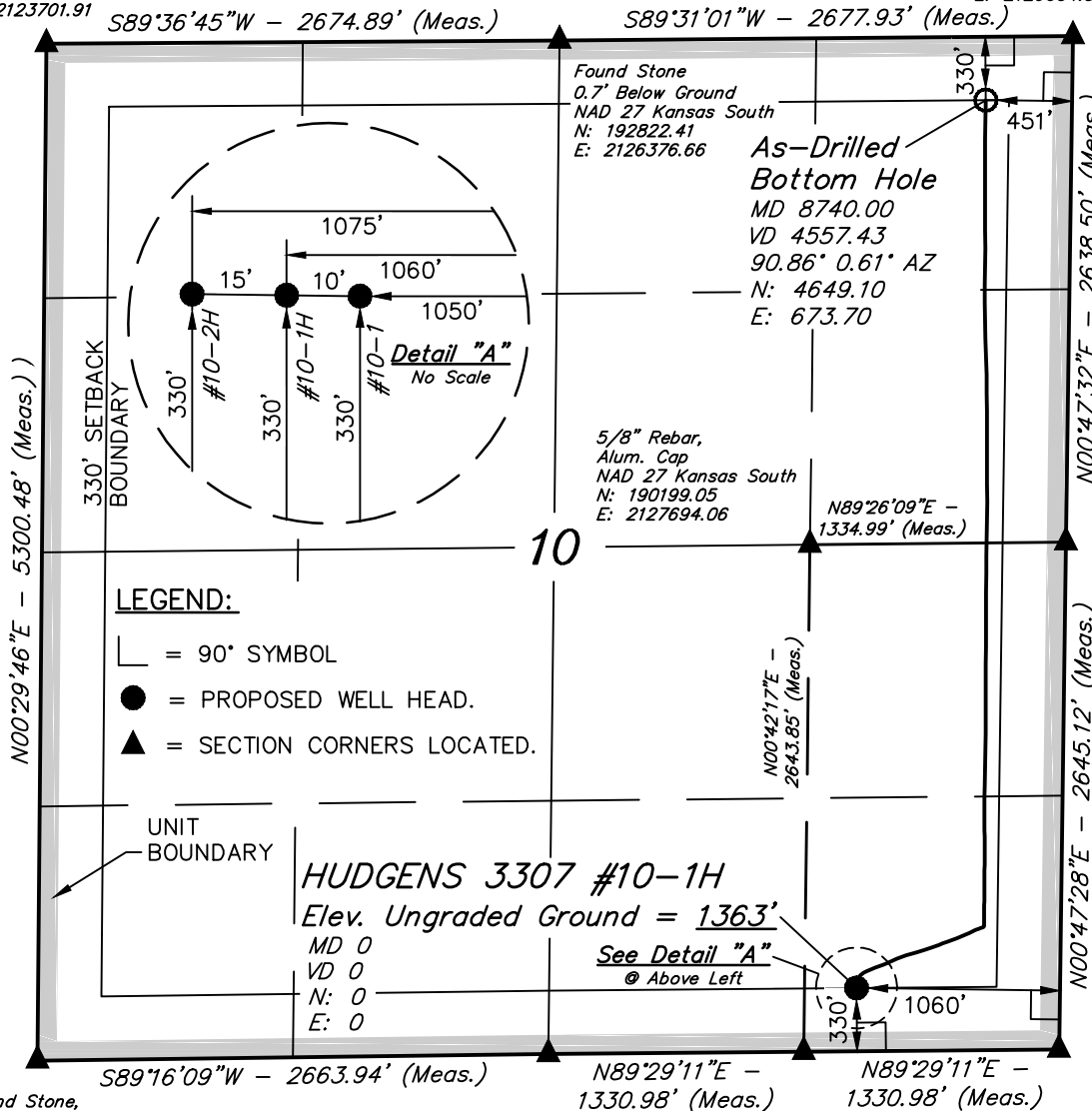
SCALE

CERTIFICATE

THIS IS TO CERTIFY THAT THE ABOVE PLAT WAS PREPARED FROM FIELD NOTES OF ACTUAL SURVEYS MADE BY ME OR UNDER MY SUPERVISION AND THAT THE SAME ARE TRUE AND CORRECT TO THE BEST OF MY KNOWLEDGE AND BELIEF.

Robert J. [Signature]

REGISTERED LAND SURVEYOR
REGISTRATION NO. 1451
STATE OF KANSAS
01-15-13



LEGEND:

- └─┘ = 90° SYMBOL
- = PROPOSED WELL HEAD.
- ▲ = SECTION CORNERS LOCATED.

UNIT BOUNDARY

HUDGENS 3307 #10-1H
Elev. Ungraded Ground = 1363'
MD 0
VD 0
N: 0
E: 0
See Detail "A"
@ Above Left

Found Stone,
Iron Bar 2.5'
Below Ground
NAD 27 Kansas South
N: 187492.64
E: 2123678.13

1/2" Rebar 1.3'
Below Ground
NAD 27 Kansas South
N: 187537.75
E: 2126341.70

5/8" Rebar 0.5'
Below Ground,
Alum Cap, LS 1451
NAD 27 Kansas South
N: 187555.25
E: 2127672.58

NAD 83 (#10-1H AS-DRILLED BOTTOM HOLE)	NAD 83 (#10-1H SURFACE LOCATION)
LATITUDE = 37°11'40.50" (37.194583)	LATITUDE = 37°10'54.74" (37.181872)
LONGITUDE = 98°03'31.91" (98.058864)	LONGITUDE = 98°03'40.27" (98.061186)
NAD 27 (#10-1H AS-DRILLED BOTTOM HOLE)	NAD 27 (#10-1H SURFACE LOCATION)
LATITUDE = 37°11'40.42" (37.194561)	LATITUDE = 37°10'54.66" (37.181850)
LONGITUDE = 98°03'30.69" (98.058525)	LONGITUDE = 98°03'39.04" (98.060844)
STATE PLANE NAD 27 (KANSAS SOUTH)	STATE PLANE NAD 27 (KANSAS SOUTH)
N: 192520.15 E: 2128600.59	N: 187889.07 E: 2127946.20

UINTAH ENGINEERING & LAND SURVEYING		
85 SOUTH 200 EAST - VERNAL, UTAH 84078		
(435) 789-1017		
SCALE 1" = 1000'	DATE SURVEYED: 12-08-12	DATE DRAWN: 01-15-13
PARTY C.A.G.	REFERENCES G.L.O. PLAT	
WEATHER WARM	FILE SGOMI	