

KEVIN L. KESSLER
CONSULTING PETROLEUM GEOLOGIST
 (316) 522-7338

OPERATOR : MULL DRILLING CO INC.
LEASE : RICHARDSON WELL # : 1 - 29
LOCATION : 1540 FSL & 355 FWL
SEC: 29 TWP : 16 S RGE : 22 W
COUNTY : NESS STATE : KANSAS

ELEVATION
KB : 2419
GL : 2411
MEASUREMENTS FROM
KB

CONTRACTOR : W W DRILLING RIG # 12
COMM: 10 / 19 / 2012 COMP : 10 / 27 / 2012
RTD : 4540 LOG TD : 4532
SAMPLES SAVED FROM : 3700 TO : RTD
GEOLOGICAL SUPERVISION FROM : 3700 TO : RTD
MUD UP : 3600 TYPE MUD : CHEMICAL

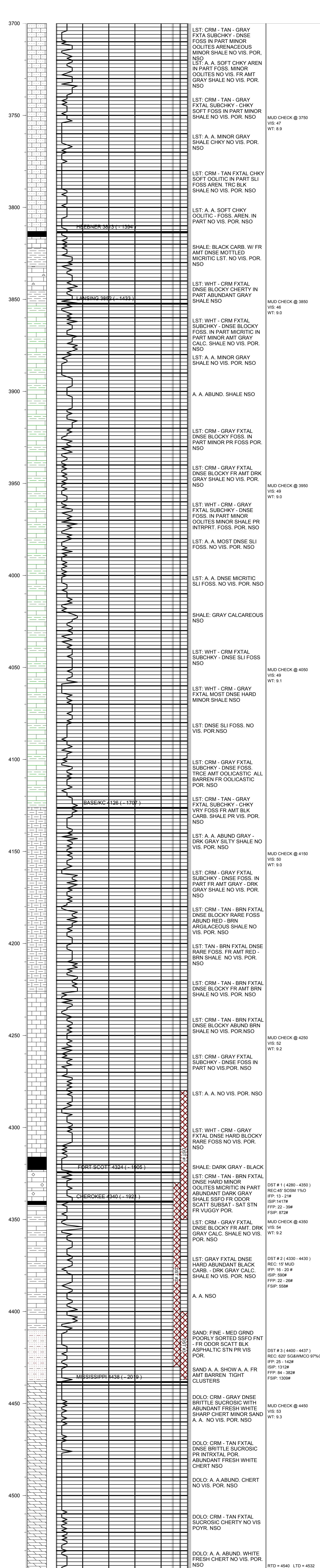
CASING RECORD
SURFACE :
8 5/8" @ 236'
PRODUCTION :
5 1/2" @ 4540'

ELECTRICAL SURVEYS :

FORMATION	TOP	LOG	DATUM	TOP	SAMPLE	DATUM	STRUCT. COMP.
HEEBNER	3808		- 1389	3813		- 1394	+ 07
LANSING	3848		- 1429	3852		- 1433	+ 06
BASE/KC	4122		- 1703	4126		- 1707	+ 06
FORT SCOTT	4318		- 1899	4324		- 1905	+ 08
CHEROKEE	4335		- 1916	4340		- 1921	+ 09
MISSISSIPPI	4438		- 2019	4438		- 2019	+ 04

REFERENCE WELL FOR STRUCTURAL COMPARISON :

PALOMINO PET. # 1 PAINTER SEC 29 - T 16 S - R 22 W NESS COUNTY KANSAS



COMMENTS:

5 1/2" PRODUCTION CASING WAS SET

TO FURTHER EVALUATE THE PRODUCTIVITY OF THIS WELL

KEVIN L. KESSLER