

KEVIN L. KESSLER
CONSULTING PETROLEUM GEOLOGIST
(316) 522-7338

OPERATOR : MULL DRILLING CO INC.
LEASE : HENDERSON WELL # : 1 - 16
LOCATION : 413' FNL & 1972' FWL
SEC: 16 TWP : 16 S RGE : 23 W
COUNTY : NESS STATE : KANSAS

ELEVATION
KB : 2444
GL : 2436
MEASUREMENTS FROM
KB

CONTRACTOR : W W DRILLING RIG #12
COMM: 10 / 30 / 2012 COMP : 11 / 07 / 2012
RTD : 4500 LOG TD : 4500
SAMPLES SAVED FROM : 3700 TO : RTD
GEOLOGICAL SUPERVISION FROM : 3700 TO : RTD
MUD UP : 3600 TYPE MUD : CHEMICAL

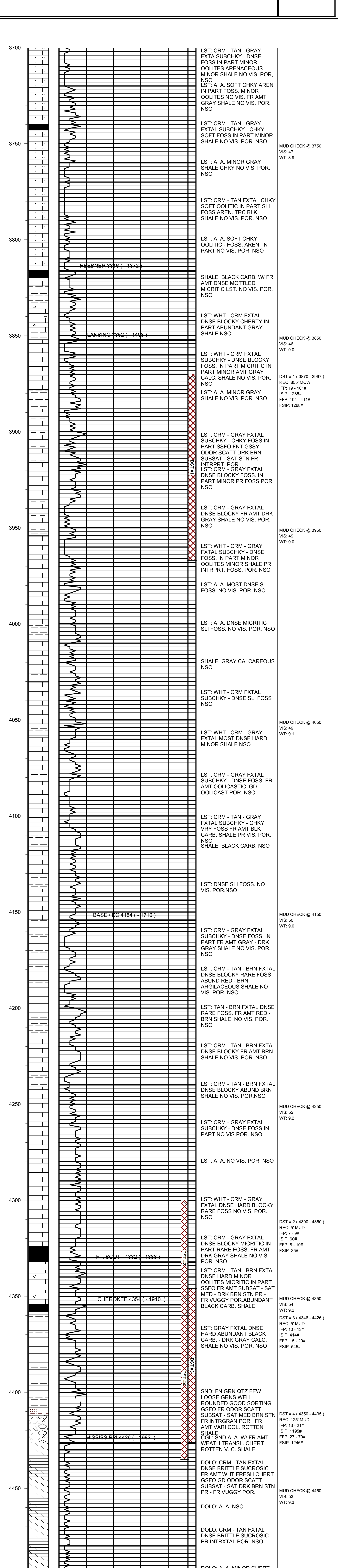
CASING RECORD
SURFACE :
8 5/8" @ 233'
PRODUCTION :
NONE

ELECTRICAL SURVEYS :
CDL/CNL
DIL
MICRO
SONIC

FORMATION	TOP	LOG	DATUM	TOP	SAMPLE	DATUM	STRUCT. COMP.
HEEBNER	3816		- 1372	3816		- 1372	- 02
LANSING	3852		- 1408	3852		- 1408	- 04
BASE/KC	4154		- 1710	4154		- 1710	FLAT
FORT SCOTT	4332		- 1888	4332		- 1888	- 01
CHEROKEE	4354		- 1910	4354		- 1910	FLAT
MISSISSIPPI	4426		- 1982	4426		- 1982	+ 29

REFERENCE WELL FOR STRUCTURAL COMPARISON :

BEREN CORP. # 1 - 16 WILLA SEC 16 - T 16 S - R 23 W NESS COUNTY KANSAS



COMMENTS:

DUE TO NEGATIVE DST RESULTS
THIS WELL WAS PLUGGED AS D & A

KEVIN L. KESSLER