

# GEOLOGIST'S REPORT

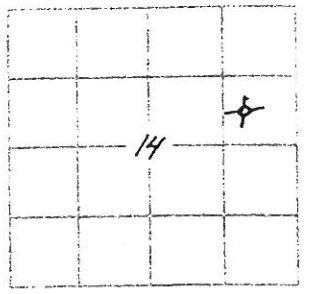
## DRILLING TIME AND SAMPLE LOG

**Company** *Trans Pacific Oil Corp.*  
**Well** *Cambron 'A' #1-14*  
**Field** *Nirvana*  
**Location** *2190' FNL, 850' FEL*  
**SEC** *14* **TASP** *18s* **RGE** *24w*  
**County** *Ness* **STATE** *Kansas*  
**Contractor** *Duke Drlg. Rig 4*  
**Start** *1/2/2013* **Comp** *1/12/2013*  
**Depth** *4400'* **Well** *4399'*  
**MUD NO.** *3471'* **TYPE MUD** *Chemical*

**ELEVATIONS**  
**KS** *2305*  
**OK**  
**GL** *2314*  
 Measurements Are All From *K.B.*  
**CASING**  
**Surface** *8 5/8 @ 222'*  
**Production** *None*  
**ELECTRICAL SURVEYS**  
*Pioneer En. Srvc.*  
*CNL/CDL/DIL/Cal.*

**SAMPLES SAVED FROM** *3650'* **TO** *T.D.*  
**DRILLING TIME KEPT FROM** *3300'* **TO** *T.D.*  
**SAMPLES EXAMINED FROM** *3650'* **TO** *T.D.*  
**GEOLOGICAL SUPERVISION FROM** *3800'* **TO** *T.D.*  
**GEOLOGIST ON WELL** *W. Bryce Bidleman*

FORMATION TOPS	DC	SAMPLES
Anhydrite	1582 (+732)	1583 (+731)
Base Anhydrite	1614 (+700)	1613 (+701)
Heebær	3698 (-1379)	3693 (-1379)
Lansing	3735 (-1421)	3736 (-1422)
Hushpuckney	4003 (-1689)	4003 (-1689)
Base Kansas City	4028 (-1714)	4031 (-1717)
Marmaton	4068 (-1754)	4068 (-1754)
Fort Scott	4227 (-1913)	4228 (-1914)
Cherokee Shale	4252 (-1938)	4255 (-1941)
Mississippi	4315 (-2001)	4316 (-2002)



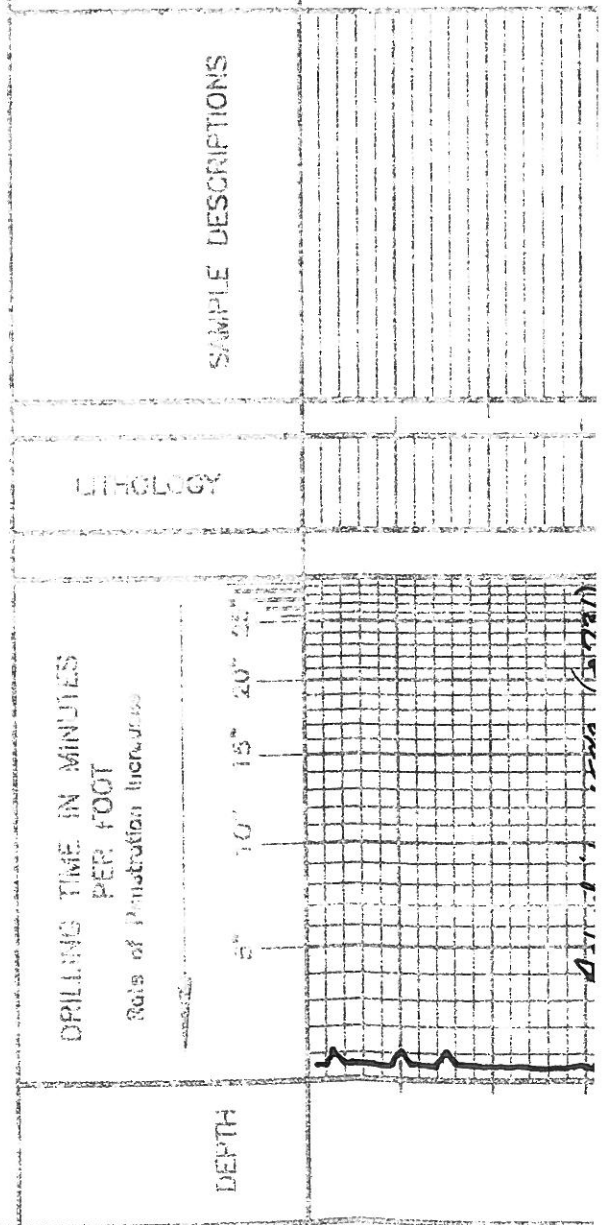
**REMARKS** *The Cambron 'A' #1-14 was only 4 feet low to the TPO Debes, Unit A. #14 is southwest but had good shows of oil in the upper Mississippi dolomite. Further eval by 3 DSTs. In the Miss showed poor reservoir development. Shows of oil were also seen in the 220' zone of the Kansas City and in the Fort Scott, both of which were condemned by DST. Due to negative drill stem test results and electric log evaluation it decided to plug and abandon the Cambron A #1-14.*

*Respectfully,  
 W. Bryce Bidleman*

### LEGEND

- Anhydrite
- Salt
- Sandstone
- Shale
- Carb sh
- Limestone
- Oil Lime
- Chert
- Dolomite

SCALE 1" = 100'



REMARKS

Anhydrite 1588 (F 731)  
Slog 1582 (F 732)

Base Anhydrite 1613  
Slog 1614 (F 700)

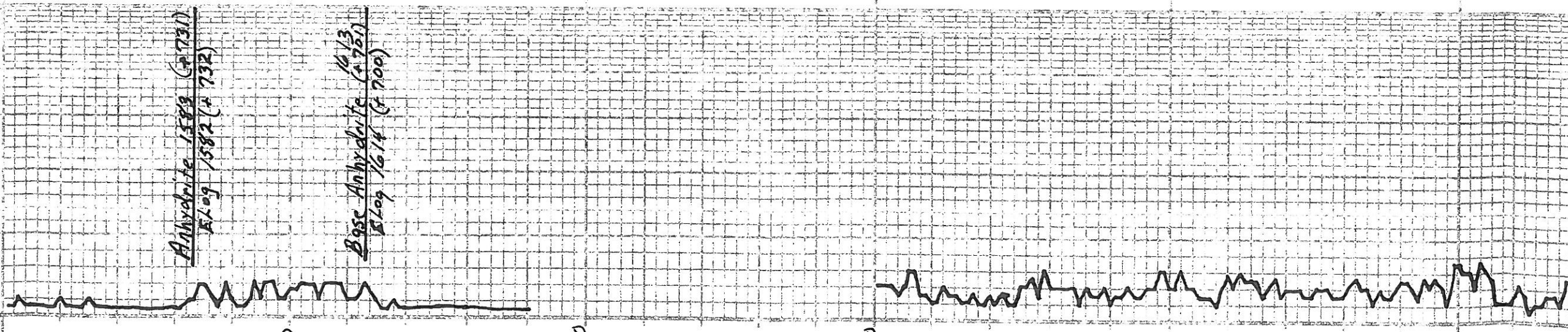
1600

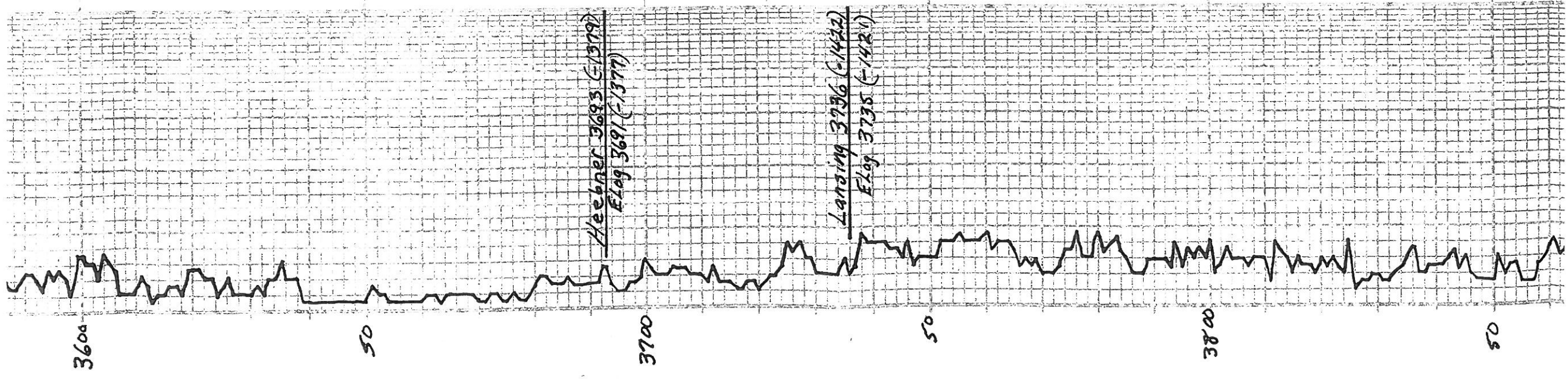
1650

3500

50

3600





LM-TL → GY, F → MX, GRAY  
FOSS, FA VEGY, FOSS MID Q,  
CHY-GRY, TR, ORA, DSE.

LM-CRM → TL → GY, FA, FOSS,  
PT, PR VEGY, FOSS MID Q,  
CHRY W PT.

LM-TL, MX, FOSS, OOK, TL, SD  
DO ALSO SCAT → TL, FOSS MID Q,  
CRIMBL, MS.

LM1-AA.

LM-AA.

LM-CRM → TL, F → MX, FOSS  
CHRY W PT, PR VEGY, FA W PT, PR.

LM-TL → GY, FX, FEW FOSS,  
DSE, TR GR CHY.

SH-BLK, CARB.

LM-TL, FA, FEW FOSS, DSE.

LM-TL → GY, FX, DSE, CHRY W PT,  
SH-GRY → GY → BLK.

LM-CRM → TL, FX, FEW FOSS, MOST  
PT, PR AMT, W CHS.

LM-CRM → TL, FX, FOSS, DSE,  
MS.

LM-TL, FX, FOSS, MOSTLY DSE,  
CHRY W PT, FEW POSITIVE.

LM-DKGY → DKGY-TR, FX, DSE,  
HARD, TR BLK CHY,  
SH-DKGY.

LM-AA, SH-AA,  
ABUNDANT - DKGY, MOTT → BLK,  
FRESH SH.

LM-TL → DKGY-BUILD, DIE,  
SOME CHS, FEW CHY-AAA,  
SHRY-GRY → BLK, TR HARD CLAY.

LM-TL, FA, FOSS, FEW SCAT VEG,  
MOSTLY DSE, SOME CHS.

LM-CRM → TL, FX, FOSS, FEW SCAT  
VEG, REST DSE.

LM-CRM, FA, FOSS, SCAT PA, PT,  
PT, INT-LL, MOSTLY DSE,  
LPC w/ TINY DRAG, DEAD DIE, No  
FIL, No OOR.

LM-CRM → TL, FX, FOSS, SCAT, PR  
VEG, FA, AMT CHY,  
SHY-AAA → GRY → GY → BLK.

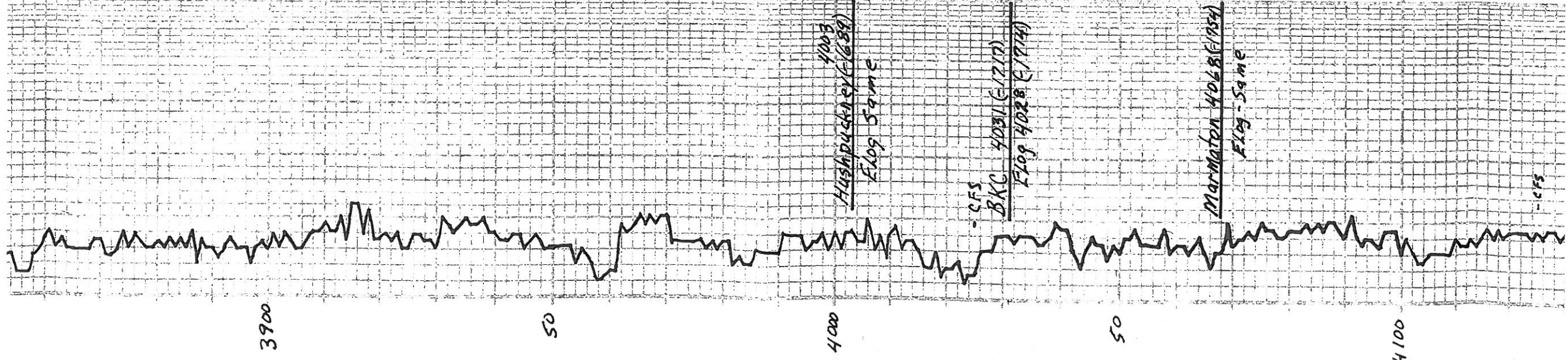
LM-CRM → TL, FX, FOSS, SCAT  
PR, MOSTLY, MOSTLY DSE,  
SH-AA.

LM-CRM → TL, FX, FOSS, SCAT  
PR, SCAT, FA, BOMBAY,  
VEG, NI.

LM-CRM → TL, FX, FOSS, SCAT, PR  
PT, PR, CHRY W PT,  
EAT - W, FOSS.

LM1-AA, SE 1200, CHS.

LM1-AA → TL, G, FOSS.



401 001, 1000 1000 1000

LM-CRM → TM, FX, FOSS,  
DSE, SH AMT CHK,  
TR WH CRT.

LM-TM → GY, TX, FX, FEW  
FOSS, DSE,  
GHT → WH → GY.

SH-TM, FX, DSE  
SH-GRU → GY → BLK.

SH-AA

LM-CRM → TM, FX, FOSS IN PT,  
DSE, FRAMT CHK.

LM-CRM → TM, FX, FEW  
FOSS, DSE.

LM-TM → GY, TX, FX, DSE.  
SH-GRU → GY.

LM-TM, FX, FEW FOSS, DSE,  
HARD. SH-AA.

LM-TM → LLY, FEW FOSS, FEW  
OOLITHS, DSE, HARD.

LM-CRM → TM, FX, FEW FOSS,  
DSE, CRTKY, TR WH CRT,  
SH-AMT → GRU → GY.

LM-CRM → TM, FX, FEW FOSS,  
SCAT VEGY, INT-X-L-P, REST,  
DSE, MS.

LM-TM, FX, FOSS, DSE.  
TR GY CRT.  
SH-GRU → GY.

SH-MAR → GY → BLK.  
LM-TM, FX, FEW FOSS, DOLT  
IN PT, FEW SCAT OOLITHS,  
REST DSE, MS.

LM-TM, FX, MS, OOLITH IN PT, FOSS,  
REXZD IN PT, SCAT FR OOLITH,  
INT-X-L-P, CRTKY IN PT, LPC  
W/TU STKS, TR FO, NO OOLITH.

LM-TM, FX, TX, DSE, CRTKY  
IN PT, TR TU CRT.

SH-MAR → GRU → GY → BLK, CARB.

LM-TM, FX → MX, FOSS, FR, LIBY  
FOSS, SH-AA, INT-PAINT, DSE, F  
SCAT STKS, CRACK, DULL FEU.

LM-TM, FX, DSE  
SH-GRU → GY, SH-KY, POOR SPA.

LM-LTGH, FX, DSE,  
SH-DK GY → BLK, CARB, SOFT.

LM-BRN → GY → BWN, FX, DSE,  
HARD, SB-ALTH, SH-AA  
SH-GY → BLK, SH-AA GY CLAYS.

LM-TM, FX, FOSS IN PT, MOSTLY  
DSE, CRTKY IN PT.

SH-GRU → GY → BLK, SOME GY CLAY  
LM-TM → GY, FX, FEW FOSS, DSE,  
FR AMT, SOFT WH CRT.

LM-TM → GY → TX, FEW MOSTLY DSE,  
HARD, FEW ISOLATED VEGY, 3 PC  
W/ BKN, TARRY RESTDUE, No FO,  
No OOLITH.

LM-TM → GY, FX, FEW FOSS, DSE,  
SCAT CRTKY, MS.

SH-MAR → GRU → GY, WEATH. FR  
AMT GY, CARB.

LM-GY, FX, DSE, WEATH. IN PT  
SH-AA, TR WH CRT, WH CRT.

LM-TM, FX, DSE, MARO, FEW  
FOSS, SH-AA, SOFT WH CRT,  
MS.

LM-TM → GY → TX, FX, DSE,  
HARD, SB-ALTH, FR AMT, SOFT  
WH CRT, MS.

TR WH CRT → TM, FX, MS

4003  
Hushpuckney (1689)  
Elog Same  
- CFS  
BKC 4031 (1717)  
Elog 4028 (1714)  
Marmaton 4048 (1954)  
Elog - Same  
- CFS

DST #1 3998-4025'  
30-75-60-90  
1st open - Strong, BOB in 4  
No blow back  
2nd open - Strong, BOB/s  
No blow back.  
Rec: 60' GIP  
180' O Sp MW (Tr-0)  
1,085' W  
1265' Total Fluid  
FP: 46-288 / 297-626  
SIP: 1317 / 1288  
HP: 1954 / 1952

4100

50

4200

50

4300

50

Rawnee 4139 (-1825)  
Elog - Same

Labette 4224 (-1970)  
Shale Elog 4222 (-1968)  
Fort Scott 4228 (-1944)  
Elog 4227 (-1913)

Cherokee  
Shale 4256 (-1941)  
Elog 4252 (-1938)

Base of Penn. 4296 (-1923)  
Elog 4294 (-1980)  
Miss. 4316 (-2002)  
Elog 4315 (-2001)

AML GY' GRD. CLAYS

LM - GY, FX, DSE, W/FAIR 10 PT  
SH - AA w/ FR AMT RBY W/CLAY

LM - TU, FX, DSE, HARD, FEW  
FOSS, SEM AMT SOFT W/ CHK.  
MS.

LM - TU → GY - TP, FX, DSE  
HARD, SB - LITH, FA AMT SOFT  
W/ CHK. MS.

LM - GRM → TU, FX, DSE,  
CHRY W PT, FA AMT SOFT  
SH - MAR → GR → GX

LM - S - A - A

LM - GY, FX, DSE, HARD, SIXTY 10 PT  
MS.

LM - GY → GY - TP, FX, SDY W PT,  
DSE, HARD. MS.

LM - A - A

LM - GY, FX, DSE, SDY W PT.

LM - GY → GY - TP, FX, SDY W PT, DSE,  
HARD.

LM - DKGY → GY - BW, FX, DSE,  
FAIR W PT  
FLOOD SH - DKGY → BLK, SOFT

LM - S - H - A - A

LM - DKGY → OKBWN - GX, FX,  
DSE, HARD,  
ABDR SH - BAR, TR PYR.

SH - BLK, CARB, SOFT.

LM - TU, FX, Foss, P-F, G  
Veg: M-TX, LTH, FA AMT 2nd  
CAL, GS FO, SEMBL, PC BLGSD  
D, G, TP SAT, FR OMS, GD,  
YELK FLU

LM - TU, FX, Foss, SCAT PR VEG,  
FOSS MLD, ES FO, LG, SPY SEM, WK  
ODK, FR FLU

LM - TU, FX, Foss, SCAT PR LTH PT  
Veg: P, P, P, G, MK ODR

SM - GRU → GY → BLK, CARB W PT,  
W/FAIR W/ CLAYS

LM - TU, FX, DSE, FRAC W PT,  
FR AMT SOFT W/ CHK.

TR CHY - L - TH, TRASS, SHB

LM - GRM → TU, Foss, FEW FOSS,  
CHRY W PT, SCAT PR VEG,  
TP, LTH, FA AMT 2nd, 3 PC W/SS FO,  
TP STY, LG ODR

LM - TU, FX, Foss, SCAT P + FK  
Veg: FOSS MLD, 3 PC W/TP  
STY, TR, WK ODR W/ BLK

LM - GRM → TU, FX, FEW FOSS, SCAT  
PR VEG, P, P, P, G, MK ODR, FA AMT  
SOFT W/ CHK

LM - TU → GY → GRD, GY W/ GRU  
SH LTH W SOME, MOSTLY DSE,  
FR AMT SOFT EPE,  
SH - GRU → GY, TR CHY - OR - TP, FR,  
SHB

LM - S - H - A - A  
SEM AMT MCHZ - W/TP + VEG ODR,  
MS, SHIP, FEW PINNACLES  
M - STY, No FO.

DOE - F - TH, MCR W PT, Foss,  
GR VEG, W/TP, LTH, FA AMT 2nd,  
SP, FA ODR, G, FLU

1926 - DOE - TU, M - STY, RDMB  
W PT, Foss, F - SD VEG,  
FOSS MLD, ES FO, LG, SPY SEM, WK  
ODK, FR FLU

4331 - DOE - GRM → TU → GY, ELEM,  
Foss, P + FR VEG, Foss MLD,  
P + TX, TR GLAUS, F - TH,  
FO, LIGHTER STY THAN ABOVE

4332 - DOE - TU, Foss, Foss,  
P + FR VEG, Foss MLD, M - STY,  
P, G, FLU, SHW STY, GOOD ODR,

4370 - DOE - GRM → TU → GY, ELEM,  
Foss, P + FR VEG, Foss MLD, P + TX,  
TR GLAUS, F - TH, FA AMT 2nd,  
3 PC W/SS FO, TP STY, LG ODR

4380 - DOE - AA, SDY, WK ODR, CHY -  
W/TP, FRESH

4390 - DOE - GRM → TU, FA, Foss, Foss,  
P + FR VEG, Foss MLD, M - STY,  
P, G, FLU

DST #2 4212 - 42  
30 - 75 - 60 - 9  
1st Open - Fair blow, inc to  
2nd Open - Weak blow, inc  
Rec: 100' GIP  
20' SOC M (820)

FP: 11-18 / 15-21  
SIP: 333 / 167  
HP: 2047 / 2045

DST #3 4273 - 43  
30 - 75 - 60 - 90  
1st Open - Weak, inc to  
2nd Open - Very Weak, inc  
Rec: No GIP  
25' FO  
20' OCM (1084)  
45' Total

FP: 13-22 / 22-27  
SIP: 683 / 293  
HP: 2090 / 2086

DST #4 4272 - 48  
30 - 75 - 60 - 110  
1st Open - Weak, inc to  
2nd Open - Weak, inc to  
Rec: 30' GIP  
10' FO  
30' SOC M (520)  
40' Total

FP: 14-21 / 23-28  
SIP: 668 / 354  
HP: 2109 / 2106

DST #5 4271 - 4336  
30 - 75 - 60 - 90  
1st Open - Weak, inc to  
2nd Open - Weak, inc to  
Rec: 30' GIP  
10' FO  
30' SOC M (520)

