

Scale 1:240 (5"=100') Imperial
 Measured Depth Log

Well Name: #4-26 Phillip
 Location: 909' FNL, 793' FWL, SECTION 26-13S-31W
 License Number: API: 15-063-22062 Region: Gove County
 Spud Date: 11/26/2012 Drilling Completed: 12/5/2012
 Surface Coordinates: LAT 38.9002357
 LONG -100.7390946
 Bottom Hole Coordinates: Vertical hole

Ground Elevation (ft): 2871' K.B. Elevation (ft): 2876'
 Logged Interval (ft): 3500' To: RTD Total Depth (ft): 4643'
 Formation: Mississippian at RTD
 Type of Drilling Fluid: Chemical

Printed by MUD.LOG from WellSight Systems 1-800-447-1534 www.WellSight.com

OPERATOR

Company: Grand Mesa Operating Co.
 Address: 1700 N. Waterfront Parkway
 Bldg. 600
 Wichita, KS 67206-5514

GEOLOGIST

Name: John Goldsmith
 Company: John Goldsmith Wellsite Service
 Address: 427 Roosevelt St.
 Cheney, KS 67025
 316-640-0236

COMMENTS

Contractor: Mufin Rig #24
 Pusher: Tony Martin
 Surface Casing: 5 joints of 8 5/8" set at 220'
 Production Casing: 5.5" Production Casing was Installed.
 Mud by: MudCo
 DST's by: Diamond Testing
 Logs by: Superior Well Services (DIL, CN-CD, ML)
 RTD=4643'
 LTD=4642'

FORMATION TOPS	SAMPLE TOPS	LOG TOPS
FORMATION	Depth Datum	Depth Datum
Queen Hill	3831' -955	3829' -953
Heebner Shale	3894' -1018	3892' -1016
Toronto	3917' -1041	3917' -1041
Lansing	3936' -1060	3936' -1060
Muncie Creek Shale	4088' -1212	4088' -1212
Stark Shale	4176' -1300	4175' -1299
Hushpuckney Shale	4215' -1339	4214' -1338
Base of KC	4247' -1371	4246' -1370
Marmaton	4284' -1408	4284' -1408
Little Osage Shale	4405' -1529	4406' -1530
Excello Shale	4436' -1560	4434' -1558
Cherokee Shale	4470' -1594	4468' -1592
Johnson Zone	4518' -1642	4516' -1640
Morrow	4534' -1658	4533' -1657
Mississippian	4565' -1689	4564' -1688
RTD	4643' -1769	
LTD		4642' -1768

DSTs

DST #1 "K Zone" 12-02-2012 4174'-4197' 30-45-60
 1st Open = Surface Blow Built to 2" in 15 min, Then Slowed to 1.5" in (No Blow Back)
 2nd Open = Very Weak Surface Blow (No Blow Back)
 IFP = 17-8# ISIP = 518# FFP = 90-135# FSP = 507#
 HYDP = 2055-2030#
 339' Total Fluid 339' Water (25% Mud, few Oil specs)

DST #2 "Ft Scott" 12-03-2012 4398'-4432' 20-20-20-20
 1st Open = Few Bubbles on Tool Open, Then No Blow (No Blow Back)
 2nd Open = No Blow (No Blow Back)
 IFP = 14-16# ISIP = 425# FFP = 16-18# FSP = 454#
 HYDP = 2152-2136#
 1' Total Fluid 1' Mud (Few Oil specs on Tool)

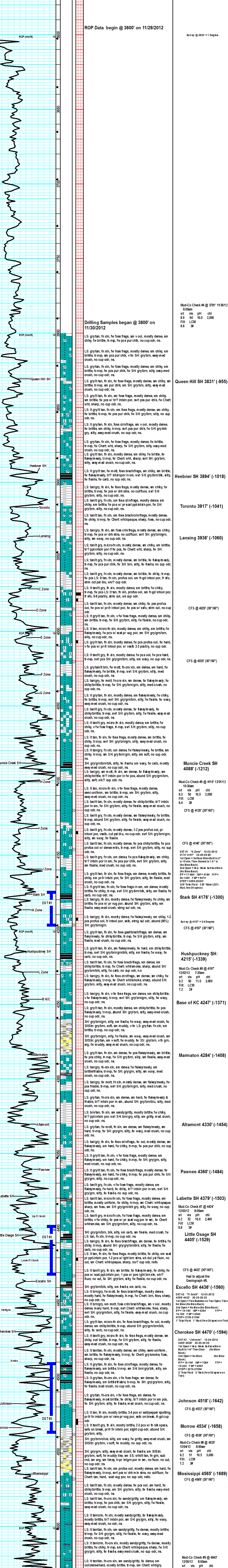
DST #3 "Johnson" 12-04-2012 4490'-4538' 20-20-20-20
 1st Open = Very Weak Surface Blow Built to 1/4" Then Died (No Blow Back)
 2nd Open = No Blow (No Blow Back)
 IFP = 16-19# ISIP = 708# FFP = 19-22# FSP = 606#
 HYDP = 2210-2199#
 2' Total Fluid 2' Mud (Few Oil specs on Tool)

ROCK TYPES

Anhy	Shale	Dol	Slysh
Chit	Shcol	Dtd	Sitydolo
Coal	Shgy	Gry sh	Sitydolo
Congl	Sstst	Sandylms	Sitydolo
Dol	Ss	Shale	Shaly ls
Gyp	Carb sh	Sltstn	
Lmst		Shlysts	

ACCESSORIES

FOSSIL	Plant	Glauc	STRINGER
Algae	Strom	Gly	Anhy
Amph	Fuss	Hvymn	Arg
Belm	Oomold	Kaol	Bent
Brachist		Marl	Coal
Bryozoa	MINERAL	Minxl	Dol
Cephal	Anhy	Nodule	Gyp
Crin	Arggrn	Phos	Ls
Echin	Arg	Pyr	Mrst
Fish	Bent	Salt	Sststrg
Foram	Bit	Sandy	Ssstrg
Fossil	Brefrac	Silt	Carbsh
Gastro	Calc	Sil	Clystn
Oolite	Carb	Sulphur	Dol
Gastrol	Chtdk	Tuff	Grysh
Ostra	Chltd	Chlorite	Gryslt
Pelec	Dol	Dol	Lms
Pellet	Feldspar	Sandylms	Sh
Pisolite	Ferrpel	Sly	Sltstn



RTD 4643', -1767
 LTD 4642', -1766