



Woolsey Operating Company, LLC

Scale 1:240 (5"=100') Imperial

Measured Depth Log

Well Name: Jahay #6 H
Location: Section 6 - Township 34 South - Range 10 West
License Number: API: 15-007-23946-01-00 Region: Barber County KS
Spud Date: October 18, 2012 Drilling Completed: November 12, 2012
Surface Coordinates: Apx NE NE NW
315' FNL, 2430' FWL

Bottom Hole
Coordinates:
Ground Elevation (ft): 1455' K.B. Elevation (ft): 1472'
Logged Interval (ft): 3300' To: 5120' Total Depth (ft): 5120'
Formation: Kansas City Group ----> Mississippian
Type of Drilling Fluid: Chemical Mud, Displaced at 2956'

Printed by WellSight Log Viewer from WellSight Systems 1-800-447-1534 www.WellSight.com

OPERATOR

Company: Woolsey Operating Company, LLC
Address: 125 N. Market, Suite 1000
Wichita, KS 67202

GEOLOGIST

Name: Billy G. Klaver
Company: Woolsey Operating Co. LLC
Address: 125 N. Market, Wichita Kansas, 67202

COMMENTS

Surface Casing: Set 20" X 53#/ft conductor to 40' KB with 4 yards of grout. Ran 7 joints of new 13 3/8" X 54.5#/ft casing to 316' KB (tally 316'). Cemented with 300 sx Class A, 2% gel, 3% cc. Plug down at 7 pm on October 18, 2012, cement did circulate.

Intermediate casing: Set 118 joints of 7" X 23#/ft new casing at 5102' with 50 sx 60/40 pozmix and 150 sx Class H.

Dan D Drilling Rig 11 Bit Record:

- 1) 17 1/2" JZ RT out at 320'
- 2) 12 1/4" HTC RT out at 708'
- 3) 8 3/4" RTC DSX 616 out at 3995'
- 4) 8 3/4" RTC SKFX out at 4184'
- 5) 8 3/4" RTC R-23 APDH out at 5120'
- 6-10) 6 1/8" TRC R-16, 5120' to 8980'

Gas Detector: Woolsey Operating Co. Gas Trailer #2

Mud System: Mud-Co. Brad Bortz, Engineer

DSTs: No tests were ran

Drilling Info.

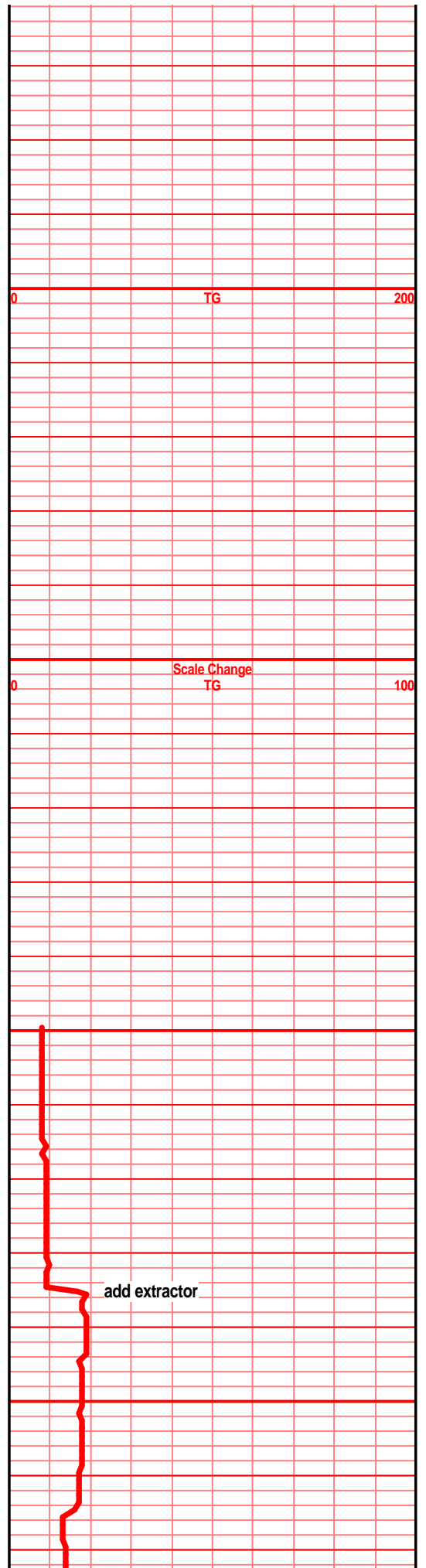
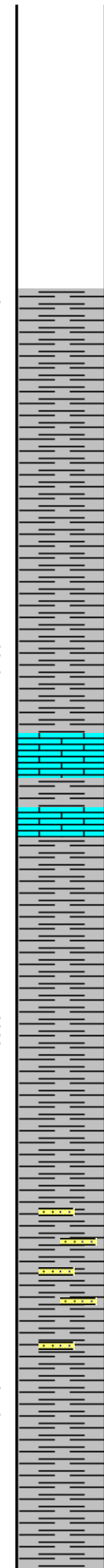
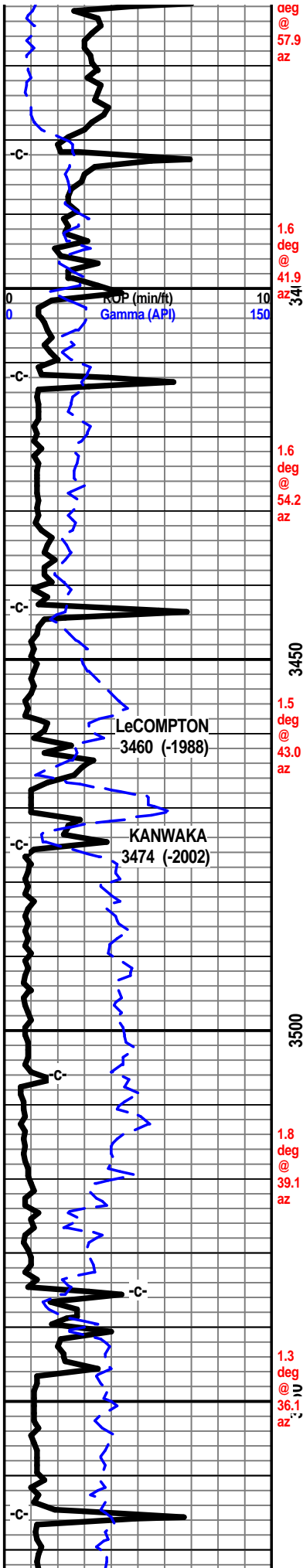
Chemical mud displaced at 2956' on 10/23/12.

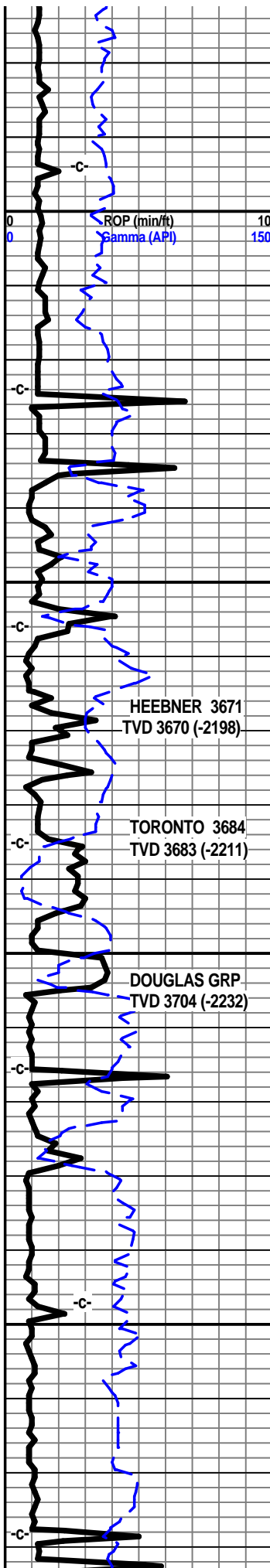
CREWS

Tool Pusher: Steve Ellington, Sammy Fry relief,

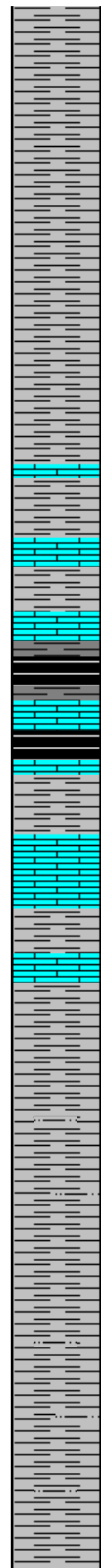
Drillers: 7 day-12 hour tours, Johnnie Stone, Terry Stark, Andy Braziel, Jack Lambert. Assorted Okie roughnecks.

October 20, 2012 TOOH at 708'
 October 21, 2012 Drilling at 1510'
 October 22, 2012 Drilling at 2170'
 October 23, 2012 Drilling at 2723'
 October 24, 2012 Drilling at 3235'
 October 25, 2012 TOOH at 3842' repairs
 October 26, 2012 TIH/directional tools
 October 27, 2012 Drilling at 4200'
 October 28, 2012 Drilling at 4470'
 October 29, 2012 Drilling at 4572'
 October 30, 2012 Drilling at 4656'
 October 31, 2012 Drilling at 4757'
 November 1, 2012 Drilling at 5001'
 November 2, 2012 Running 7" casing





1.3 deg @ 45.5 az
 1.1 deg @ 50.0 az
 1.1 deg @ 58.2 az
 1.5 deg @ 41.2 az
 1.5 deg @ 46.0 az
 1.2 deg @ 39.5 az
 1.4 deg @ 34.7 az



shl gry med gry silty gritty, sndy in prt, tr sst wht off wht f grnd, sub ang grns, poorly srtd, sub fria to soft, arg, clay fill tr mic

shl gry med gry silty gritty, tr sndy in prt

shl gry med gry silty gritty

shl gry lt med gry silty gritty gran, tr lst tan brn f vf xln dns hrd blkly ang arg

shl gry med gy silty gritty, tr blk carb wx grsy, lst drk tan brn f vf xln dns hrd blkly ang arg in prt

shl gry med gry, blk carb, wxy grsy in sample

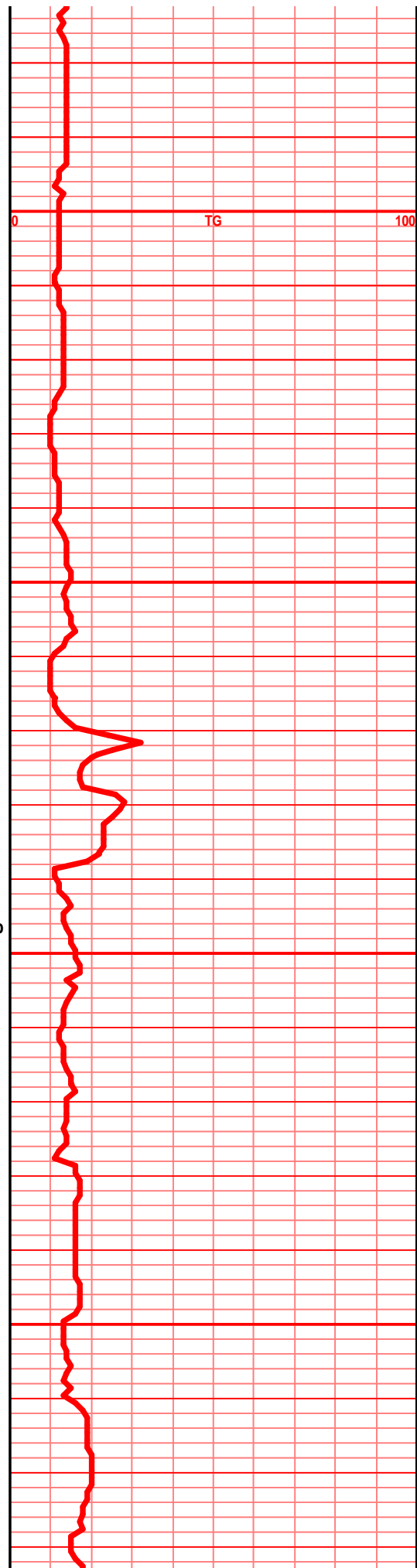
lst crm lt tan off wht f xln blkly flky ang pcs, sub chlky, micro foss frags, soft gran in prt

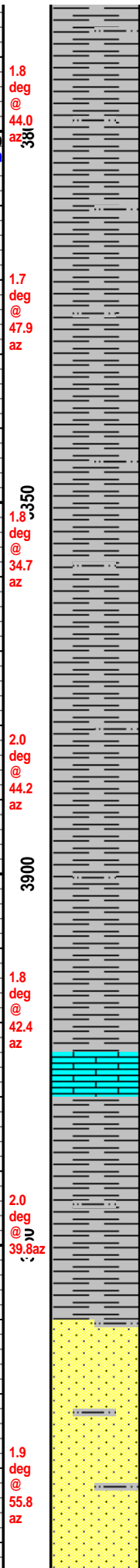
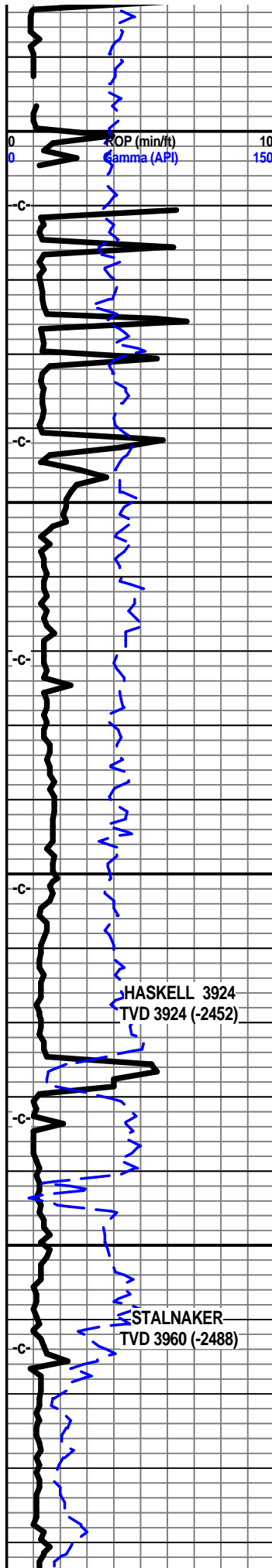
shl gry med gry silty

shl gry med gry silty soft

shl gry lt/med gry silty gritty, sndy in prt, mic, blk carb specks

shl arv lt/med arv siltv aritv. sndv in prt. blk





shl gry lt med gry, silty gritty mic, sndy in prt, blk carb specks

shl lt gry/med gry silty gritty, mic, sndy in prt, snd grn inclu, blk carb specks

shl gry lt med gry silty soft easy

shl med tr drkr gry soft silty tr gritty gran

shl gry med to drkr gry silty soft tr gritty gran with clr vfn rded/sub ang sd grn inclu

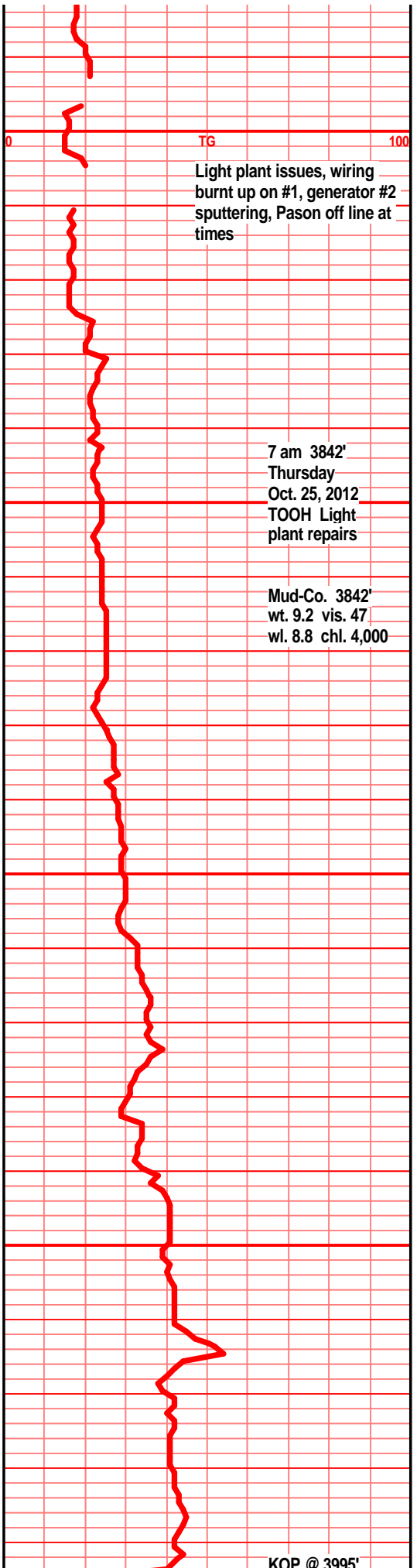
shl gry lt med drk gry silty gritty, mic in prt, snd grn inclu aa

shl gry med drk gry soft silty, spls wsh gry

shl gry med drk gry soft silty muddy

shl gry med lt gry silty soft muddy, snd grn inclu, tr sst off wht lt gry f grnd, prly srted, sub ang grns, arg, calc cem, sub fria to prly cem

sst off wht, lt gry f grnd, sub ang grns, prly srted, sub fria to tite, prly cem, calc cem, mic in prt, much carb fill, shl fill



6 pm Thursday
Oct. 25, 2012

sst off wht lt gry f grnd, sub ang grnd clstrs,
sub fria to tite, prly cem calc cem, clay fill arg,

sst off wht lt gry, f grnd clstrs, sub ang to tr
sub rded grns, sub fria to tite, prly srtd, prly
to fair cem, calc cem, arg clay fill

sst off wht lt gry fn grnd clstrs, sub ang to sub
rded grns, fair to prly cem, calc cem, mucho
carb chunks/fill, tr mic, soft gran in most

shl gry lt gry silty sndy, sst aa, f grnd sub ang
grns, sub fria, prly cem calc cem, clay fill arg
carb fill

shl gry lt med gry silty gritty sndy sst aa, shl
bec drker

mostly LCM, sst aa, change? hard to tell

shl med drk gry silty soft muddy

shl gry drk gry tr gry brn silty gritty calc in rpt

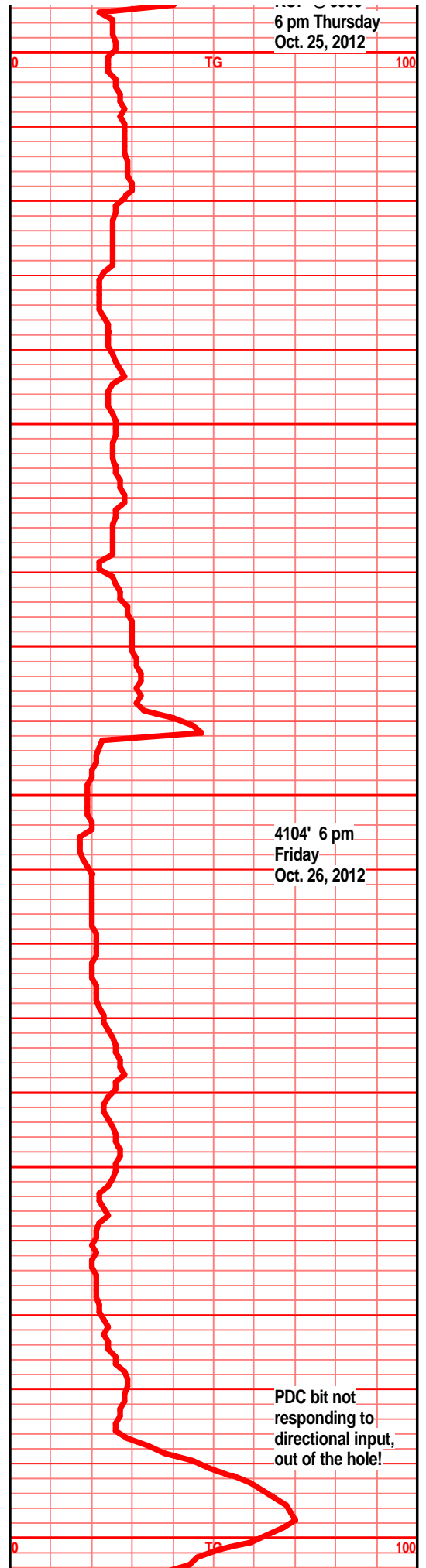
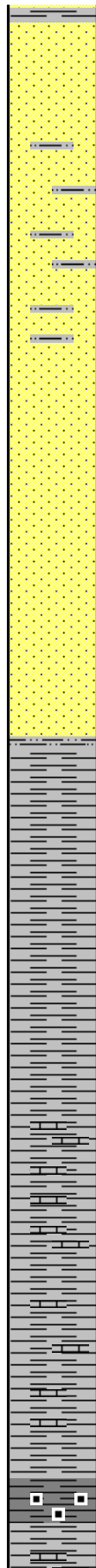
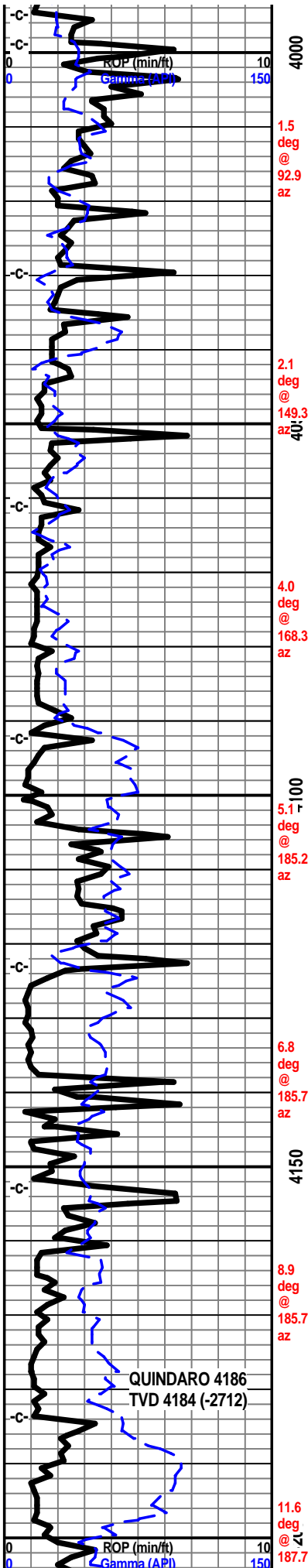
shl gry brn silty gritty calc, lst gry drk gry brn f
vf xln dns hrd blk ang arg

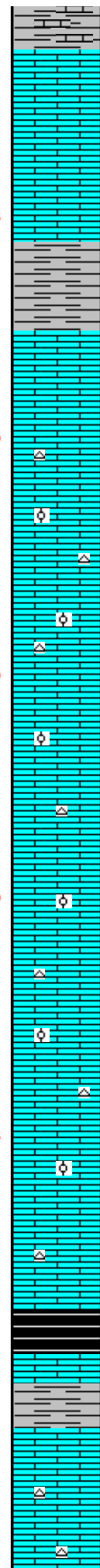
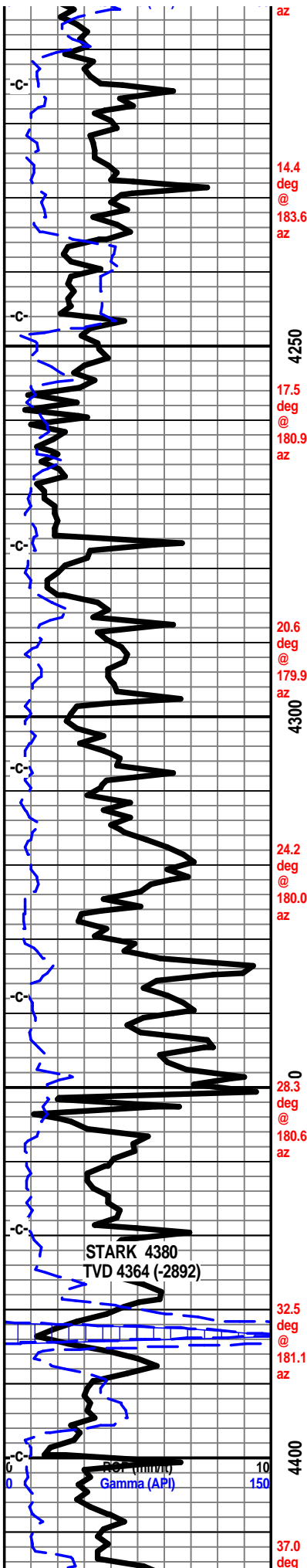
sh gry med gry, tr gry brn silty gritty arg, lst
gry brn f vf xln dns hrd silty arg

shl ry dkr gry blk, tr blk carb, abun gas bubs,
platy, blk ang pcs

4104' 6 pm
Friday
Oct. 26, 2012

PDC bit not
responding to
directional input,
out of the hole!





lst crm gry tan f vf xln dns hrd blkly ang pcs, sub chlky, tr micro foss frags,

lst crm tan off wht f sli med xln flky, sub chlky foss frags, micor ool, inter xln por, pp moldic por soft in prt, shl gry calc ang blkly pcs

lst crm tan off wht f sli med xln gran soft sub chlky, foss frags, mirco foss frags, tr ool, calc xln fill, chrt wht shrp frsh opa

lst wht off wht lt crm tan f sli med xln gran soft sub chlky gran, foss frags, micro foss tr ool, calc xln fill, chrtly in prt

lst wht crm tan off wht f sli med xln gran soft blkly pcs sub chlky, foss frags, foss ool, calc xln fill, chrt wht shrp frsh

lst crm tan lt gry in prt, f xln, sli med xln gran soft, sub chlky, foss frags, foss ool micro ool, calc xln fill, tr chrt wht lt gry shrp frsh opa

lst wht off wht crm, f sli med xln gran flky, blkly ang pcs, sub chlky foss frag,s micro ool, tr chrt tan wht opa shrp frsh

lst wht off wht lt crm f sli med xln gran, flky, soft, blkly ang pcs, sub chlky, foss frags micro ool, chrt tan wht opa frsh shrp blkly

shl gry, drk gry, blk, blk carb, blkly ang pcs, platy, much gas bubs

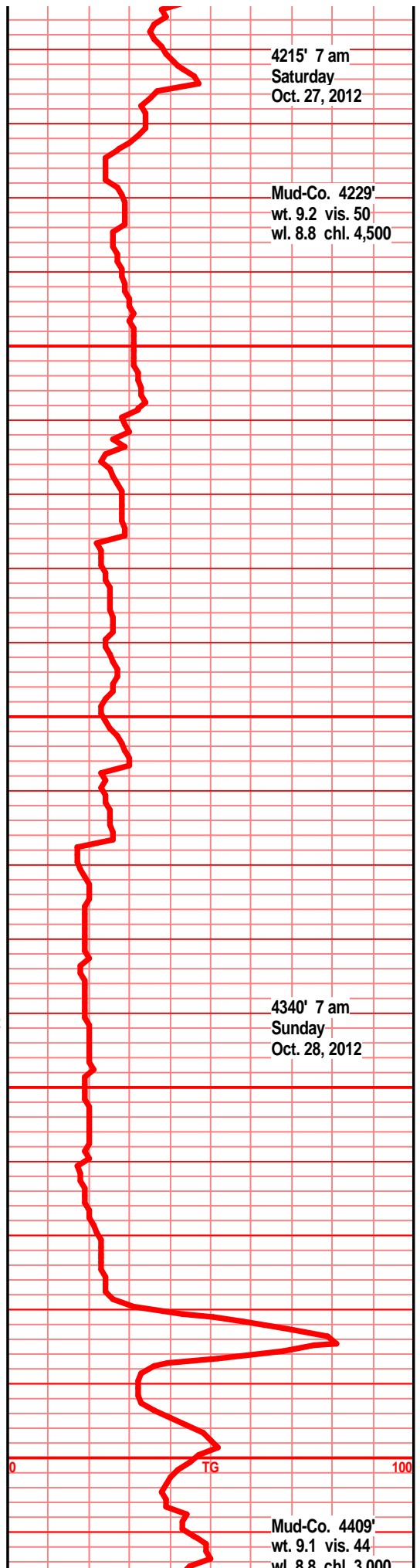
shl gry med gry calc, lst tan gry tr gry brn f xln dns hrd blkly ang arg, with lst tan crm f xln blkly ang foss sub chlky, calc xln fill

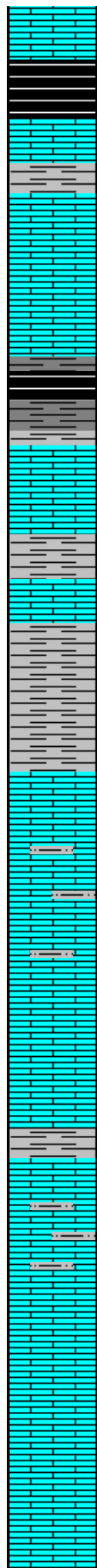
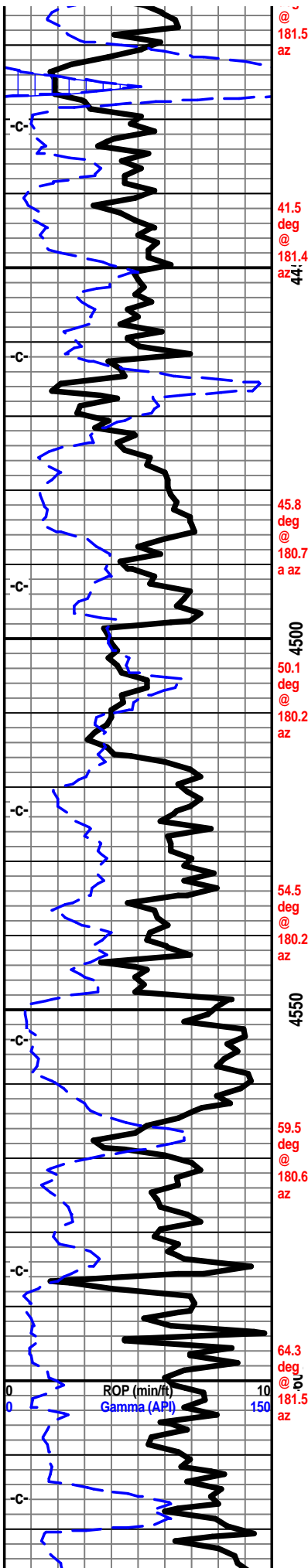
4215' 7 am
Saturday
Oct. 27, 2012

Mud-Co. 4229'
wt. 9.2 vis. 50
wl. 8.8 chl. 4,500

4340' 7 am
Sunday
Oct. 28, 2012

Mud-Co. 4409'
wt. 9.1 vis. 44
wl. 8.8 chl. 3,000





lst crm gry tan f xln gran blk ang dns hrd, foss frags, foss ool, sub chlky, flky in prt, calc xln fill, chrt off wht clr shrp frsh opa

much blk carb shl, wxy grsy gassy, lst tan crm lt gry/brn f vf xln dns hrd blk ang arg tr sub chlky calc xln fill

lst crm off wht lt tan f sli med xln gran flky ang, sub chlky foss frags, tr micro foss, micro ool, tr chrt wht tan shrp frsh

shl gry blk, blk carb, wxy grsy gassy pcs, abun gas bubs, "spitting gas", shl gry calc, lst crm tan off wht f xln blk flky sub chlky micro foss pcs chrt aa

lst crm gry, gry/brn f vf xln blk ang dns hrd calc, silty, gritty, arg, shls gry med gry brn silty calc

shls gry green, tan brn silty gritty calc in prt, lst tan gry brn f vf xln silty arg chlky gran

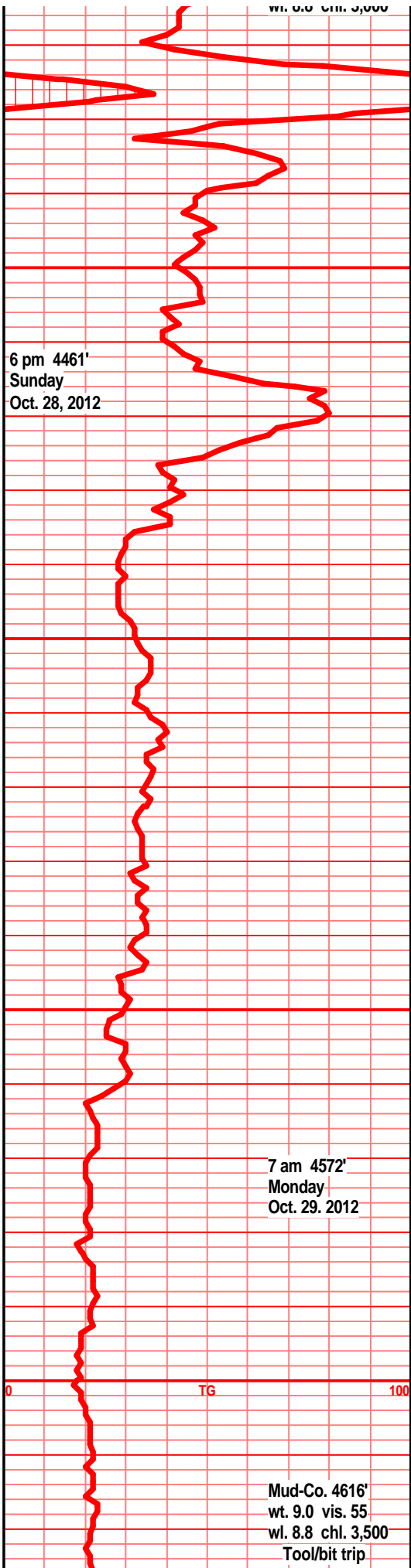
lst off wht crm tr tan gry mott, f vf xln blk flky sli sub chlky pcs, micro foss frags tr chrt wht lt gry shrp frsh opa foss

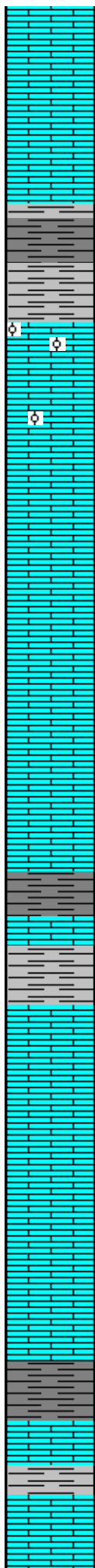
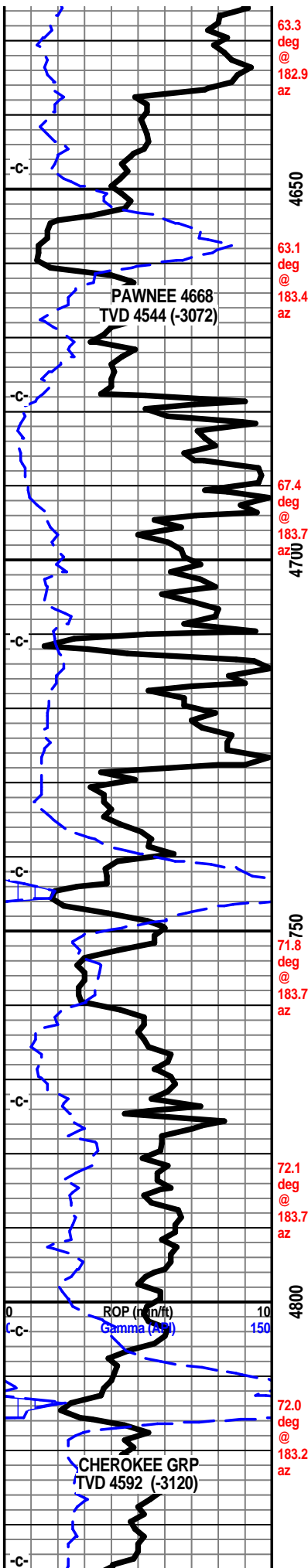
shl gry, blue green gry silty gritty sndy in prt, lst tan crm off wht f vf xln gran flky sub chlky micro foss frags,

lst crm buff tan f vf xln dns hrd blk pcs, sub chlky in prt, micro foss frags, micro ool, calc xln fill

lst crm buff tan f vf xln blk ang dns hrd pcs, micro foss, micro ool, tr sub chlky in prt, tr calc xln fill

lst crm buff tan f vf lxn blk ang dns pcs, tr sub





chiky calc xln fill, foss frags, micro foss frags, inter frags xln fill

lst crm buff tan off wht f xln blk ang tr gran, tr sub chlky foss frags, micro foss frags, tr ool, calc xln fill

shl gry med gry blk, drk gry blk blk carb tr gas bubs, silty soft in prt

lst crm buff tan f vf xln blk ang hrd pcs, tr sub chlky foss frags, micro ool, calc xln fill

lst off wth crm tan buff, f tr vf xln blk ang dns hrd, calc xln fill, tr sub chlky, foss frags, micro ool,

lst crm tan buff f vf xln dns hrd blk ang pcs, tr sub chlky, foss frags, micro ool, calc xln fill in some,

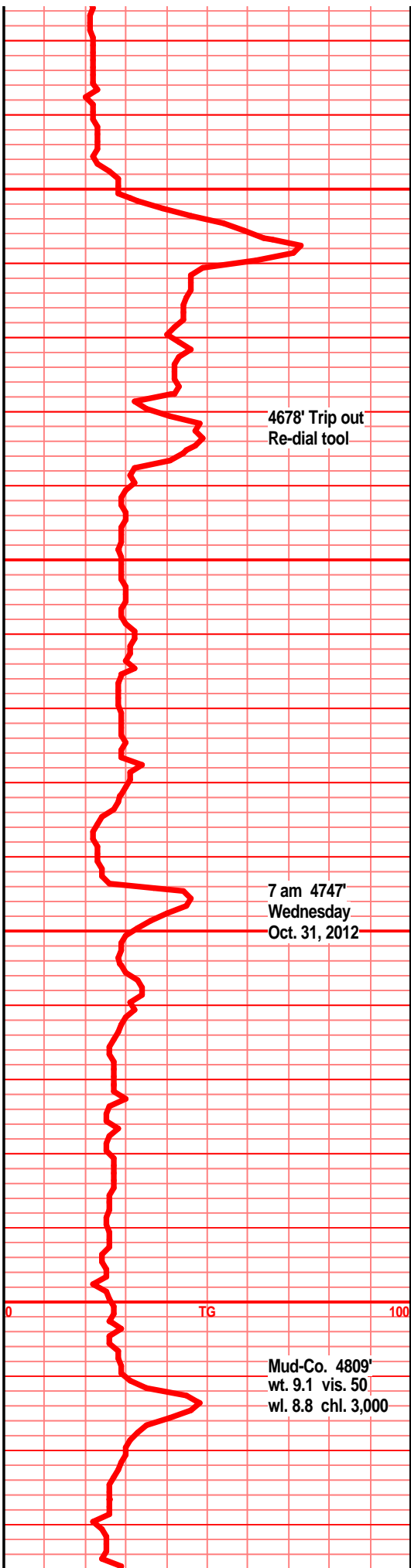
shl gry drk gry blk, blk carb in prt, lst tan crm buff f xln gran flky sub chlky calc xln fill

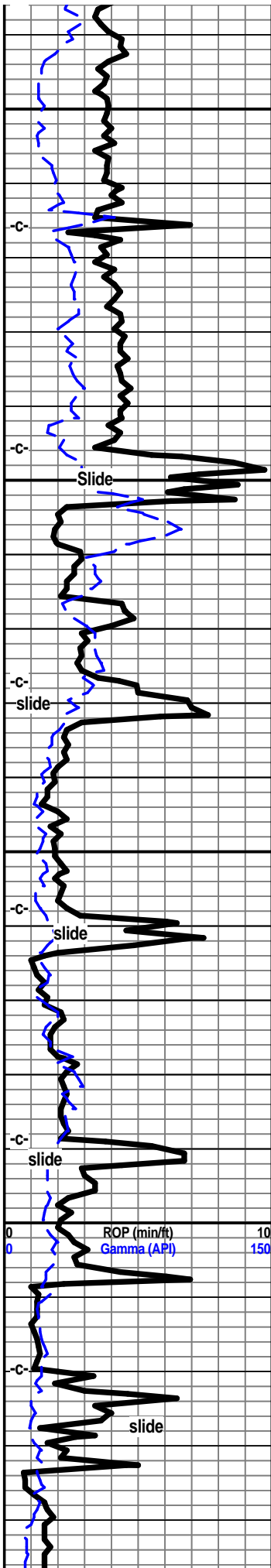
lst crm tan buff tr lt tan brn, f sli fn xln, sub chlky, blk ang dns hrd pcs, micro foss frags, calc xln fill

lst crm tan buff tr tan lt brn f vf xln dns hrd blk ang calc xln pcs, tr sub chlky micro foss frags

shl gry, drk med gry silty gritty, tr blk carb, wxy grsy pcs, tr gas bubs, lst tan gry brn f mic xln dns hrd blk ang arg, silty, tr calc fill

lst crm tan buff lt brn f vf xln blk dns sub chlky micro foss frags. calc xln fill





71.9 deg @ 183.2 az

72.0 deg @ 182.9 az

72.5 deg @ 182.9 az

73.2 deg @ 182.5 az

74.0 deg @ 182.5 az

76.7 deg @ 182.2 az

79.1 deg @ 182.2 az

4900

4950



lst crm buff tan, tr lt tan brn f vf xln gran blk
dns hrd, sub chlky foss frags, micro foss, calc
xln fill

lst crm tan buff, tr tan lt brn f vf xln dns hrd
blk ang, sub chlky in prt, foss frags, tr micro
ool, calc xln fill

lst crm tan buff, tan lt brn f xln blk dns hrd
foss frags, calc fill, arg, shls gry green brn silty
gritty calc in prt

shl gry green brn, med gry silty gritty calc in
prt, maroon/gry banded, tr yellow/vari color,
silty soft ratty silts, snd grn inclu

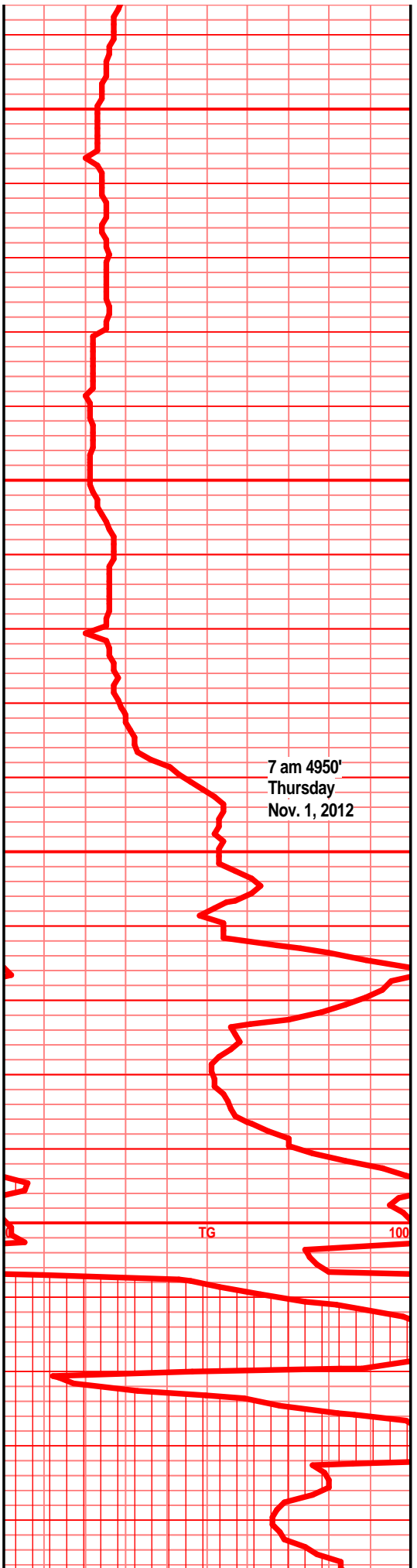
chrt clr, wht off wht, lt gry, lt blue/smokey, shrp
frsh opa, sub transl, tr chlky, limey, some
weath text por, tr pp moldic por tr hvy blk stain

chrt clr, wht off wht, lt blue gry smokey, shrp
frsh opa, sub transl, some weath gran chlky
text, tr pp moldic por, tr hvy blk stain, blk
stain, blk SFO, nodor, spotted dull UV

chrt lt gry/clr, lt gry off wht, lt blue-gry smokey,
shrp frsh opa, sub transl, sub weath gran sli
chlky limey text, tr hvy blk stain, nodor,
spotted dull UV

chrt lt gry/clr, lt gry off wht, lt blue gry smokey,
shrp frsh opa, sub transl, tr wht chrt, gran
soft sub chlky text, pp moldic por, tan brn
stain, dull spotted stain, nodor

chrt lt gry off wht tr lt blue gry smokey, shrp
frsh opa, weath sli trip text edges/sides, pp
moldic por, tan lt brn stain, sli odor, dull
spotted UV



7 am 4950'
Thursday
Nov. 1, 2012

TG

100

