

Well location, SHULTZ TRUST 2508 #19-1H, located as shown in the NW 1/4 NW 1/4 of Section 19, T25S, R8W, 6th P.M., Reno County, Kansas.

BASIS OF ELEVATION

SPOT ELEVATION LOCATED AT THE SW CORNER OF SECTION 18, T25S, R8W, 6th P.M. TAKEN FROM THE ALDEN SE, QUADRANGLE, KANSAS, RENO COUNTY, 7.5 MINUTE QUAD (TOPOGRAPHIC MAP) PUBLISHED BY THE UNITED STATES DEPARTMENT OF THE INTERIOR, GEOLOGICAL SURVEY, SAID ELEVATION IS MARKED AS BEING 1688 FEET.

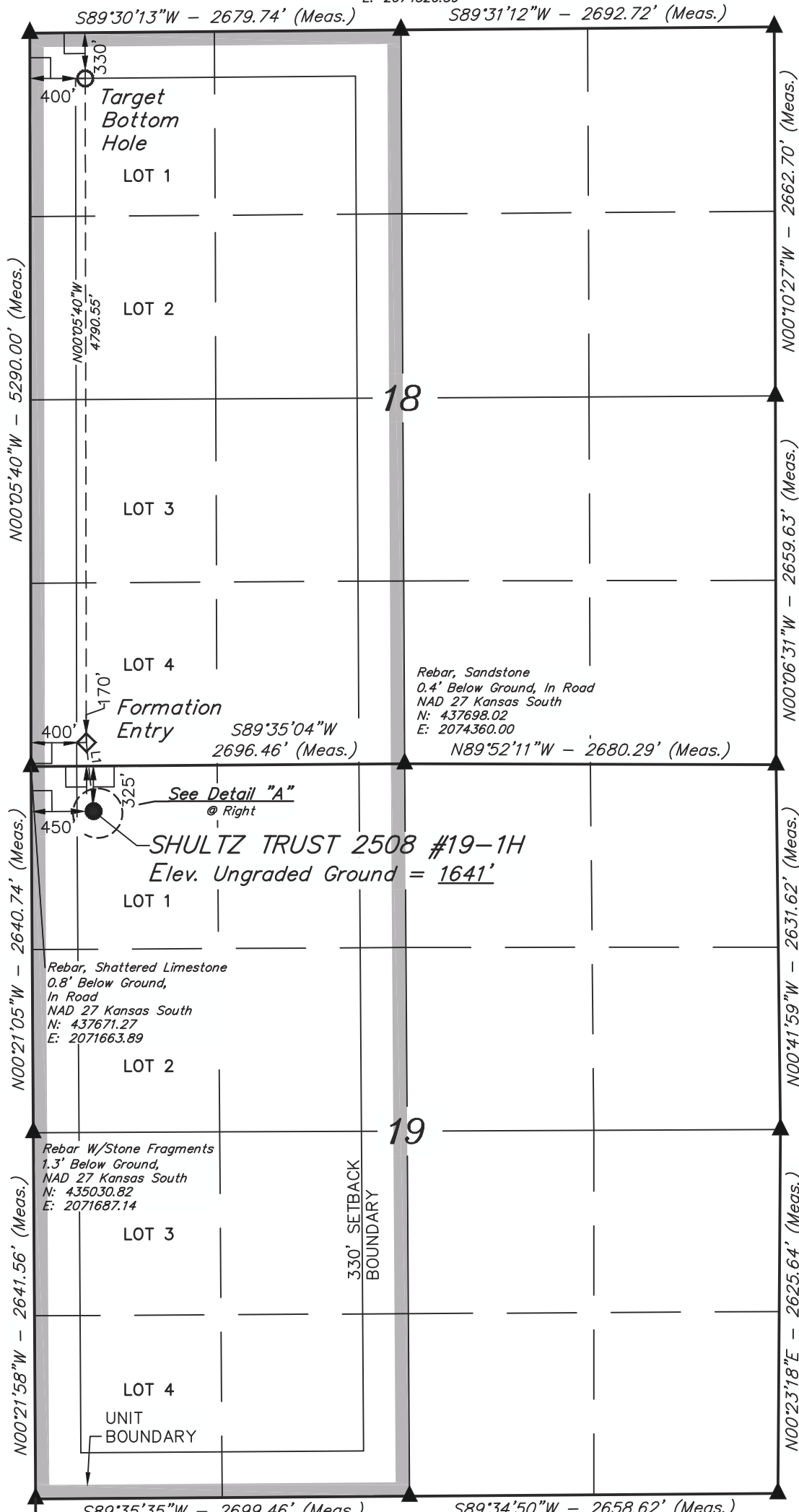
BASIS OF BEARINGS

BASIS OF BEARINGS IS A G.P.S. OBSERVATION.

Rebar
0.3' Below Ground
NAD 27 Kansas South
N: 442960.82
E: 2071641.04

Shattered Limestone,
Large Spike, In Road
1.4' Below Ground
NAD 27 Kansas South
N: 442991.19
E: 2074320.39

Iron Bar, Limestone
1.0' Below Ground
NAD 27 Kansas South
N: 443020.95
E: 2077012.72



Rebar, Limestone
0.3' Below Ground,
In Road
NAD 27 Kansas South
N: 440358.49
E: 2077027.92

Rebar, Sandstone
0.4' Below Ground, In Road
NAD 27 Kansas South
N: 437698.02
E: 2074360.00

Bar, Limestone
2.0' Below Ground,
NAD 27 Kansas South
N: 437699.09
E: 2077040.06

Rebar, Shattered Limestone
0.8' Below Ground,
In Road
NAD 27 Kansas South
N: 437671.27
E: 2071663.89

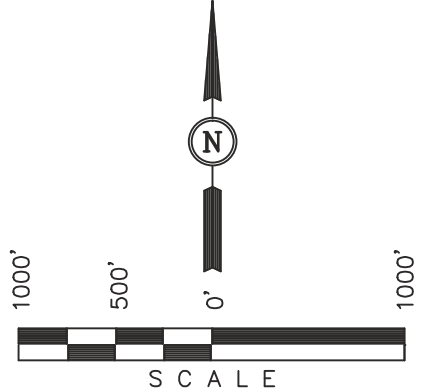
Rebar W/Stone Fragments
1.3' Below Ground,
NAD 27 Kansas South
N: 435030.82
E: 2071687.14

Rebar, Limestone
1.0' Below Ground,
NAD 27 Kansas South
N: 435067.96
E: 2077079.23

R
9
W
Rebar, Limestone
0.5' Below Ground,
NAD 27 Kansas South
N: 432389.57
E: 2071711.07

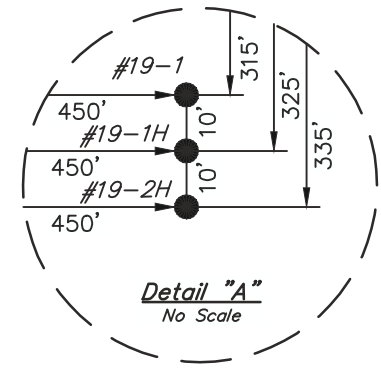
Rebar W/JELS Alum. Cap,
Flush W/Ground,
E-W Fence Line
NAD 27 Kansas South
N: 432415.96
E: 2074410.18

Limestone
0.8' Below Ground,
NAD 27 Kansas South
N: 432442.54
E: 2077068.45



LEGEND:

- └─┘ = 90° SYMBOL
- = PROPOSED WELL HEAD.
- ▲ = SECTION CORNERS LOCATED.



LINE TABLE		
LINE	DIRECTION	LENGTH
L1	N06°01'21"W	497.41'

CERTIFICATE
THIS IS TO CERTIFY THAT THE ABOVE PLAT WAS PREPARED FROM FIELD NOTES OF ACTUAL SURVEYS MADE BY ME OR UNDER MY SUPERVISION AND THAT THE SAME ARE TRUE AND CORRECT TO THE BEST OF MY KNOWLEDGE AND BELIEF.
Robert S. Justice
REGISTERED LAND SURVEYOR
REGISTRATION NO. 1451
STATE OF KANSAS

REVISED: 01-28-13

UINTAH ENGINEERING & LAND SURVEYING
85 SOUTH 200 EAST - VERNAL, UTAH 84078
(435) 789-1017

SCALE 1" = 1000'	DATE SURVEYED: 01-17-13	DATE DRAWN: 01-22-13
PARTY B.L. T.B. C.A.G.	REFERENCES G.L.O. PLAT	
WEATHER COLD	FILE SGOMI	

NAD 83 (#19-1H TARGET BOTTOM HOLE)	NAD 83 (#19-1H FORMATION ENTRY)	NAD 83 (#19-1H SURFACE LOCATION)
LATITUDE = 37°52'55.44" (37.882067) LONGITUDE = 98°15'02.62" (98.250728)	LATITUDE = 37°52'08.08" (37.868911) LONGITUDE = 98°15'02.52" (98.250700)	LATITUDE = 37°52'03.19" (37.867553) LONGITUDE = 98°15'01.87" (98.250519)
NAD 27 (#19-1H TARGET BOTTOM HOLE)	NAD 27 (#19-1H FORMATION ENTRY)	NAD 27 (#19-1H SURFACE LOCATION)
LATITUDE = 37°52'55.39" (37.882053) LONGITUDE = 98°15'01.38" (98.250383)	LATITUDE = 37°52'08.03" (37.868897) LONGITUDE = 98°15'01.28" (98.250356)	LATITUDE = 37°52'03.14" (37.867539) LONGITUDE = 98°15'00.63" (98.250175)
STATE PLANE NAD 27 (KANSAS SOUTH) N: 442635.37 E: 2072042.42	STATE PLANE NAD 27 (KANSAS SOUTH) N: 437845.22 E: 2072063.11	STATE PLANE NAD 27 (KANSAS SOUTH) N: 437350.73 E: 2072116.61