



Dual Compensated Porosity Log

DIGITAL LOG (785) 625-3858

15-015-23925-00-00	API No.	Company Noble Petroleum, Inc.	
		Well Prohaska #1	
		Field Augusta	
		County Butler	State Kansas
	Location	NW NE NE NW 15' FNL / 2100' FWL	Other Services DIL
	Sec: 17	Twp: 28S	Rge: 4E
	Elevation		

Permanent Datum	Ground Level	Elevation 1243	K.B. 1249
Log Measured From	Kelly Bushing	6 Ft. Above Perm. Datum	D.F.
Drilling Measured From	Kelly Bushing		G.L. 1243

Date	10/28/2011
Run Number	One
Type Log	CNL / CDL
Depth Driller	2500
Depth Logger	2504
Bottom Logged Interval	2483
Top Logged Interval	1400
Type Fluid In Hole	Chemical
Salinity, PPM CL	1100
Density	9.2
Level	Full
Max. Rec. Temp. F	101
Operating Rig Time	2 Hours
Equipment -- Location	15 Hays
Recorded By	R. Barnhart
Witnessed By	Bill Stout

Borehole Record				Casing Record			
Run No	Bit	From	To	Size	Wgt.	From	To
One	12.25	0	206	8.625	23#	0	206
Two	7.875	206	TD				

<<< Fold Here >>>

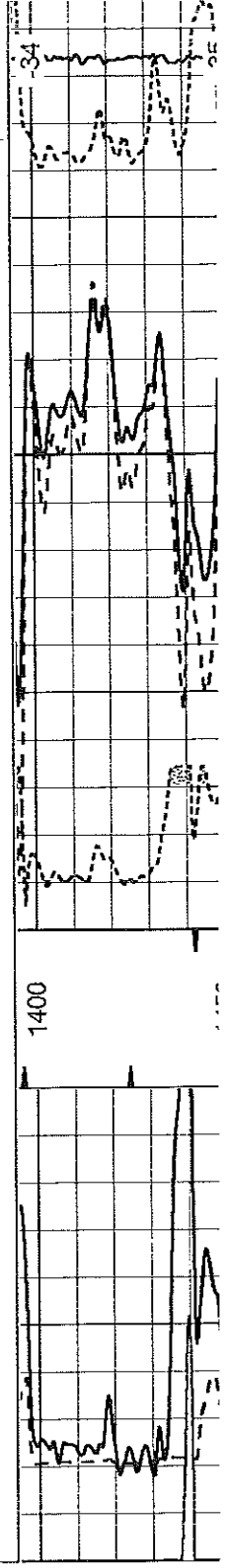
All interpretations are opinions based on inferences from electrical or other measurements and we cannot and do not guarantee the accuracy or correctness of any interpretation, and we shall not, except in the case of gross or willful negligence on our part, be liable or responsible for any loss, costs, damages, or expenses incurred or sustained by anyone resulting from any interpretation made by any of our officers, agents or employees. These interpretations are also subject to our general terms and conditions set out in our current Price Schedule.

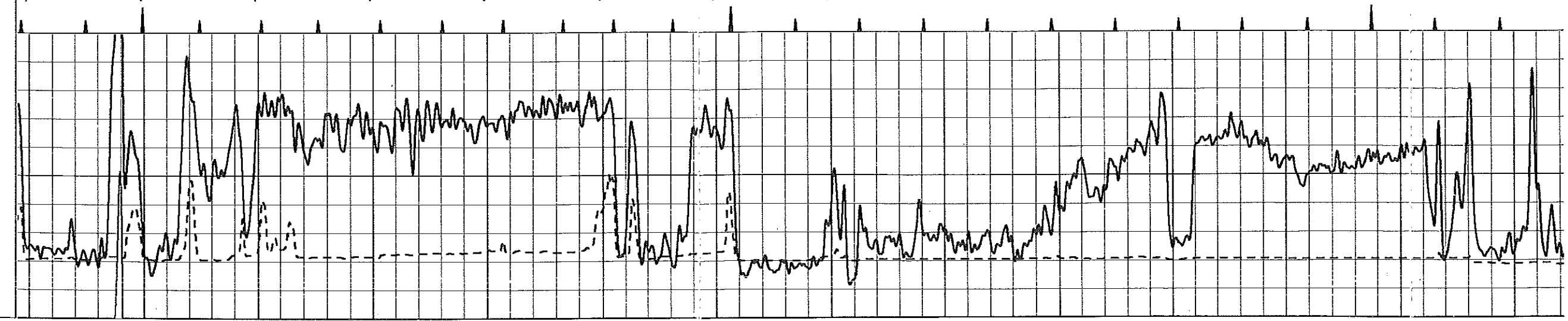
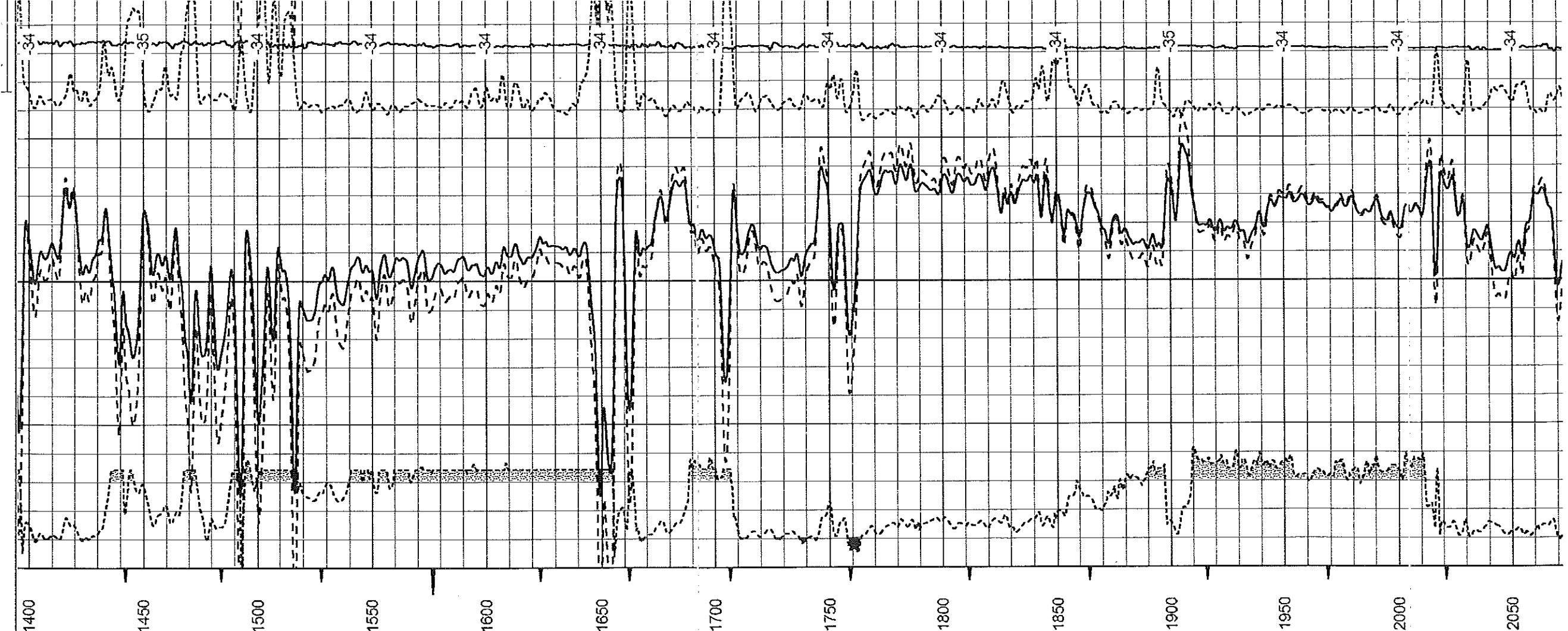
Comments

Thank you for using Log-Tech, Inc.
 (785) 625-3858
 Andover, KS:
 E to Santa Fe Lake Rd., S to 150 Rd.,
 2E to cemetery, S into thru cattle guard

Database File: noble_prohaska #1.db
 Dataset Pathname: stack/pass3.1
 Presentation Format: cdl
 Dataset Creation: Fri Oct 28 20:48:33 2011 by Calc Open-Cased 090629
 Charted by: Depth in Feet scaled 1:600

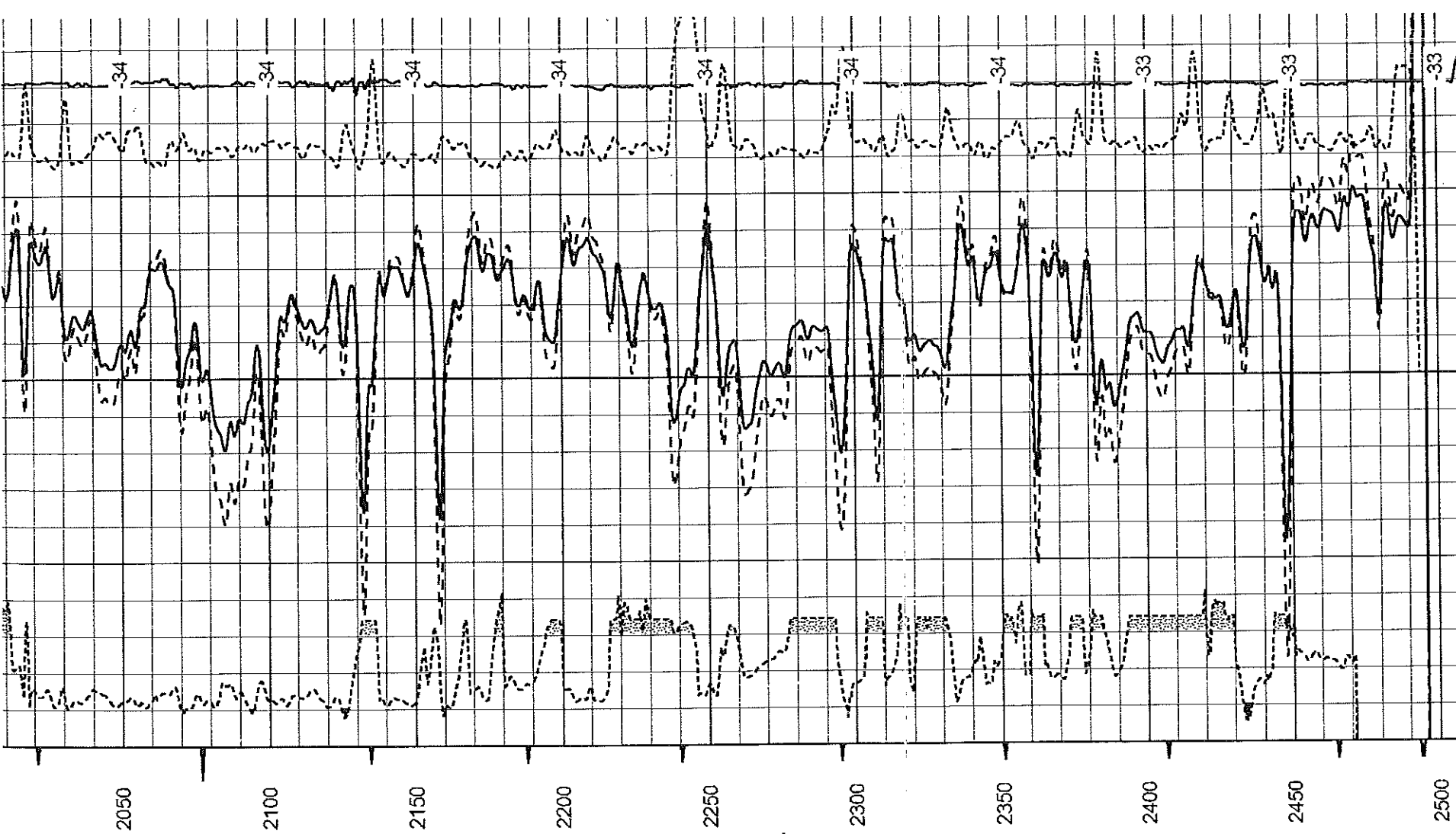
0	Gamma Ray (GAPI)	150	Compensated Density (pu)	-10
6	Caliper (in)	16	Bulk Density (g/cc)	0.2
			Line Tension (lb)	
		2.625	DGA	3.425
			Correction (g/cc)	0.2
			LSPD	(ft/min)







Gamma Ray (GAPI) 150
 Caliper (in) 16



Compensated Density (pu) 30
 Bulk Density (g/cc) 2
 Line Tension (lb) 15000
 DGA 2.625
 Correction (g/cc) 3.425 -0.25
 LSPD (ft/min) 0.25

Database File: noble_phohaska #1.db
 Dataset Pathname: stack/pass3.1
 Presentation Format: cndlspec
 Dataset Creation: Fri Oct 26 20:48:33 2011 by Calc Open-Caseid: 030629
 Charted by: Depth in Feet scaled 1:240

Gamma Ray (GAPI) 150
 Caliper (in) 16

Compensated Neutron (pu) 30
 Compensated Density (2.71 ma) (pu) 30
 DGA 2.625
 Correction (g/cc) 3.425 -0.25
 Line Tension (lb) 10000